

Product datasheet for **RG207771**

TIE1 (NM_005424) Human Tagged ORF Clone

Product data:

Product Type: Expression Plasmids
Product Name: TIE1 (NM_005424) Human Tagged ORF Clone
Tag: TurboGFP
Symbol: TIE1
Synonyms: JTK14; LMPHM11; TIE
Mammalian Cell Selection: Neomycin
Vector: pCMV6-AC-GFP (PS100010)
E. coli Selection: Ampicillin (100 ug/mL)
ORF Nucleotide Sequence: >RG207771 representing NM_005424
 Red=Cloning site Blue=ORF Green=Tags(s)

TTTTGTAATACGACTCACTATAGGGCGGCCGGAATTCGTCGACTGGATCCGGTACCGAGGAGATCTGCC
 GCC**CGATCGCC**

ATGGTCTGGCGGGTGCCCCCTTTCTTGCTCCCCATCCTCTTCTGGCTTCTCATGTGGGCGCGGGTGG
 ACCTGACGCTGCTGGCCAACTGCGGCTCACGGACCCCGAGCGTTCTTCTGACTTGCCTGTCTGGGA
 GGCCGGGGCGGGAGGGGCTCGGACGCTGGGGCCCGCCCTGCTGCTGGAGAAGGACGACCGTATCGTG
 CGCACCCCGCCGGGCCACCCCTGCGCCTGGCGCAACGGTTCGACCAGGTACGCTTCGCGGCTTCT
 CCAAGCCCTCGGACCTCGTGGGCTCTTCTCCTGCGTGGGCGGTGCTGGGCGCGGCGCACGCGCTCAT
 CTACGTGCACAACAGCCCTGGAGCCACCTGCTTCCAGACAAGGTCACACACTGTGAACAAGGTGAC
 ACCGCTGTACTTTCTGCACGTGTGCACAAGGAGAAGCAGACAGACGTGATCTGGAAGAGCAACGGATCCT
 ACTTCTACACCCTGGACTGGCATGAAGCCAGGATGGGCGGTTCTGCTGCAGCTCCCAAATGTGCAGCC
 ACCATCGAGCGGCATCTACAGTGCCACTTACCTGGAAGCCAGCCCTGGGCGAGCGCTTCTTTCGGCTC
 ATCGTGCGGGTTGTGGGCTGGGCGTGGGGCCAGGCTGTACCAAGGAGTGCCAGGTTGCTACATG
 GAGGTGTCTGCCACGACCATGACGGCGAATGTGTATGCCCCCTGGCTTCACTGGCACCCGCTGTGAACA
 GGCCTGCAGAGAGGGCCGTTTGGGCGAGGCTGCCAGGAGCAGTGCCAGGCATATCAGGCTGCCGGGC
 CTCACCTTCTGCCTCCAGACCCCTATGGCTGCTTGTGGATCTGGCTGGAGAGGAAGCCAGTGCCAAG
 AAGCTTGTGCCCTGGTCATTTTGGGCTGATTGCCGACTCCAGTGCCAGTGTGAGAATGGTGGCACTTG
 TGACCGGTTCAAGTGGTGTGTCTGCCCTCTGGGTGGCATGGAGTGCAGTGTGAGAAGTCAGACCGGATC
 CCCCAGATCCTCAACATGGCCTCAGAACTGGAGTTCAACTAGAGACGATGCCCCGGATCAACTGTGCAG
 CTGCAGGGAACCCCTTCCCCTGCGGGGACGATAGAGCTACGCAAGCCAGACGGCACTGTGCTCCTGTC
 CACCAAGGCCATTGTGGAGCCAGAGAAGACCACAGCTGAGTTCGAGGTGCCCGCTTGGTCTTTCGGGAC
 AGTGGGTTCTGGGAGTCCGTGTGTCCACATCTGGCGCAAGACAGCCGGCGCTTCAAGGTCAATGTGA
 AAGTCCCCCGTCCCCTGGCTGCACCTCGGCTCCTGACCAAGCAGAGCCGCGAGCTTGTGGTCTCCCC
 GCTGGTCTCGTCTCTGGGATGGACCCATCTCCACTGTCGCGCTGCAGTACCGGCCAGGACAGTACC



ATGGACTGGTCGACCATTGTGGTGGACCCAGTGAGAACGTGACGTTAATGAACCTGAGGCCAAAGACAG
 GATACAGTGTTCGTGTGCAGCTGAGCCGGCCAGGGGAAGGAGGAGGGGGCCTGGGGCCCTCCCACCT
 CATGACCACAGACTGTCTGAGCCTTTGTTGCAGCCGTGGTTGGAGGGCTGGCATGTGGAAGGCACTGAC
 CGGCTGCGAGTGAGCTGGTCTTGCCTTGGTGCCCGGGCCACTGGTGGGCGACGGTTTCTGCTGCGCC
 TGTGGGACGGGACACGGGGCAGGAGCGGGGAGAACGTCTATCCCCCAGGCCCGCACTGCCCTCT
 GACGGGACTCACGCTGGCACCCACTACCAGCTGGATGTGCAGCTCTACCACTGCACCCTCTGGGCCG
 CCCTCGCCCCCTGCACACGTGCTTCTGCCCCAGTGGCCTCCAGCCCCGACACCTCCACGCCACGG
 CCCTCTCAGACTCCGAGATCCAGCTGACATGGAAGCACCCGGAGGCTCTGCCTGGGCCAATATCCAAGTA
 CGTTGTGGAGGTGCAGGTGGCTGGGGTGCAGGAGACCCACTGTGGATAGACGTGGACAGCCTGAGGAG
 ACAAGCACCATCATCCGTGGCCTCAACGCCAGCACGCGTACCTTCCGCATGCGGGCCAGATTCAAGG
 GGCTCGGGGACTGGAGCAACACAGTAGAAGAGTCCACCCTGGGCAACGGGCTGCAGGCTGAGGGCCAGT
 CCAAGAGAGCCGGCAGCTGAAGAGGGCTGGATCAGCAGCTGATCCTGGCGGTGGTGGCTCCGTGTCT
 GCCACCTGCCTACCATCTGGCCGCCCTTTAACCTGGTGTGCATCCGCAGAAGCTGCCTGCATCGGA
 GACGCACCTTACCTACCAGTCAAGCTCGGGCAGGAGACCATCTGCAGTTCAGCTCAGGGACCTTGAC
 ACTTACCCGGCGCCAAAACCTGCAGCCGAGCCCTGAGTACCCAGTGTAGAGTGGGAGGACATCACC
 TTTGAGGACCTCATCGGGGAGGGAACTTCGGCCAGGTATCCGGCCATGATCAAGAAGGACGGGCTGA
 AGATGAACGCAGCCATCAAAATGCTGAAAGAGTATGCCTCTGAAAATGACCATCGTGACTTTGCGGGAGA
 ACTGGAAGTTCTGTGCAAATGGGGCATCACCCCAACATCATCAACCTCCTGGGGCCTGTAAAGACCGA
 GGTTACTTGTATATCGCTATTGAATATGCCCCCTACGGGAACCTGCTAGATTTTCTGCGAAAAGCCGGG
 TCCTAGAGACTGACCCAGCTTTTGTCTGAGAGCATGGGACAGCCTCTACCTTAGCTCCCGGACAGTGT
 GCGTTTCGCCAGTGTGCGGCCAATGGCATGCAGTACCTGAGTGAAGAAGCAGTTCATCCACAGGGACCTG
 GCTGCCCGAATGTGCTGGTGGGAGAGAACCTAGCCTCCAAGATTGCAGACTTCGGCCTTCTCGGGGAG
 AGGAGGTTTATGTAAGAAGACGATGGGGCCTCCCTGTGCGCTGGATGGCCATTGAGCCCTGAACTA
 CAGTGTCTATAACCACCAAGAGTGTGCTGCTGCTTTGGAGTCTTCTTTGGGAGATAGTGAGCCTTGA
 GGTACACCCTACTGTGGCATGACCTGTGCCGAGCTCTATGAAAAGCTGCCCCAGGGCTACCGCATGGAGC
 AGCCTCGAAACTGTGACGATGAAGTGTACGAGCTGATGCGTCAGTGTGCGGGACCGTCCCTATGAGCG
 ACCCCCCCTTGGCCAGATTGCGCTACAGCTAGGCCGATGCTGGAAGCCAGGAAGGCCTATGTGAACATG
 TCGCTGTTTGAAGACTTCACTTACGCGGGCATTGATGCCACAGCTGAGGAGGCC

ACGCGTACGCGGGCCGCTCGAG - GFP Tag - GTTTAA

Protein Sequence:

>RG207771 representing NM_005424
 Red=Cloning site Green=Tags(s)

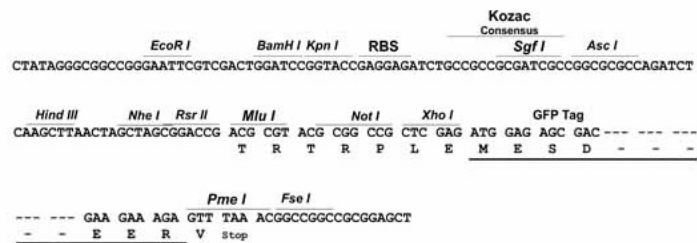
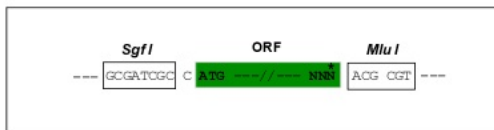
MVWRVPPFLLPILFLASHVGAVDL TLLANLRL TDPQRFFLTCVSGEAGAGRGS DAWGP LLLLEKDDRIV
 RTPPG PPLRLARNGSHQVTLR GFSKPSDLVGVFSCVGGAGARRTRVIYVHNSPGAHL L PDKVTHTVNKG D
 TAVL SARVHKEKQTDVIWKSNGSYFYTL DWHEAQDGRFLLQLPNVQPPSSGIYSATYLEASPLGSAFFRL
 IVRGC GAGRWGPGCTKECPGCLHGGVCHDHDGECVPPGFTGTRCEQACREGRFGQSCQECPGISGCRG
 LTFCLPDPYGCSCGSGWRGSCQCEACAPGHFGADCR LQCQCQNGTCDRFSGCVCPSGWHGVHCEKSDRI
 PQILNMASELEFNLETMPRINCA AAGNPFVVRGSIELRKPDGTVLLSTKAI VEPEKTTAEFEV PRLVLAD
 SGFWECRVSTSGGQDSRRFKVNVK VPPVPLA APRLLTKQSRQLVVSPLVSFSGDGP I STVRLHYRPQDST
 MDWSTI VVDPSENVTL MNLRPKTYSVRVQLSRPGE GEGAWGPPTLMTTDCPELLQPWLEGWHV EGTD
 RLRVSWSLPLVPGPLVGDGFLRLWDGTRGQERRENVSSPQARTALLTGLTPGTHYQLDVQLYHCTLLGP
 ASPPAHVLLPPSGPPAPRHLHAQALSDSEIQLTWKHPEALPGPI SKYVVEVQVAGGADPLWIDVDRPEE
 TSTIIIRGLNASTRYLFRMRASIQGLGDSNTVEESTLGNLQAE GPVQESRAAEGLDQQLILAVGVSVS
 ATCLTILAALLTLVCIRRSCLHRRRTFTYQSGSGETILQFSSGTLTLTRRPKLQPEPLSYVLEWEDIT
 FEDLIGENFGQVIRAMIKKDGLKMNAAIKMLKEYASENDRDFAGELEVLCKLGHHPNIINLLGACKNR
 GYLIIAIEYAPYGNLLDFLRKSRVLETPAFAREHGTASTLSSRQLLRFASDAANGM QYLSEKQFIHRDL
 AARNVLVGENLASKIADFGLSRGEEVYVKTMRGLPVRWMAIESLNYSVYTTKSDVWSFGVLLWEIVSLG
 GTPYCGMTCAELYEKLPQGYRMEQPRNCDDEVYELMRQCWRDRPYERPPFAQIALQLGRMLEARKAYVNM
 SLFENFTYAGIDATAEEA

TRTRPLE - GFP Tag - V

Restriction Sites: SgfI-MluI

Cloning Scheme:

Cloning sites used for ORF Shuttling:



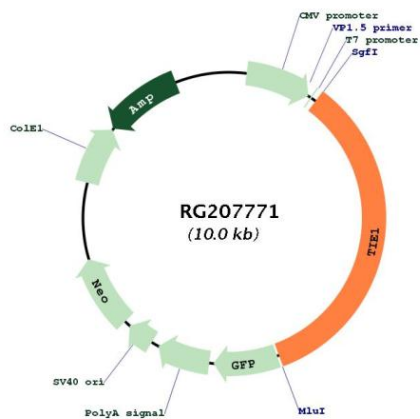
ACCN: NM_005424

ORF Size: 3414 bp

OTI Disclaimer: The molecular sequence of this clone aligns with the gene accession number as a point of reference only. However, individual transcript sequences of the same gene can differ through naturally occurring variations (e.g. polymorphisms), each with its own valid existence. This clone is substantially in agreement with the reference, but a complete review of all prevailing variants is recommended prior to use. [More info](#)

OTI Annotation:	This clone was engineered to express the complete ORF with an expression tag. Expression varies depending on the nature of the gene.
Components:	The ORF clone is ion-exchange column purified and shipped in a 2D barcoded Matrix tube containing 10ug of transfection-ready, dried plasmid DNA (reconstitute with 100 ul of water).
Reconstitution Method:	<ol style="list-style-type: none">1. Centrifuge at 5,000xg for 5min.2. Carefully open the tube and add 100ul of sterile water to dissolve the DNA.3. Close the tube and incubate for 10 minutes at room temperature.4. Briefly vortex the tube and then do a quick spin (less than 5000xg) to concentrate the liquid at the bottom.5. Store the suspended plasmid at -20°C. The DNA is stable for at least one year from date of shipping when stored at -20°C.
RefSeq:	NM_005424.2 , NP_005415.1
RefSeq Size:	3960 bp
RefSeq ORF:	3417 bp
Locus ID:	7075
UniProt ID:	P35590
Cytogenetics:	1p34.2
Domains:	ptkase, TyrKc, S_TKc, ig, IG, FN3, EGF, EGF
Protein Families:	Druggable Genome, Protein Kinase, Transmembrane
Gene Summary:	This gene encodes a member of the tyrosine protein kinase family. The encoded protein plays a critical role in angiogenesis and blood vessel stability by inhibiting angiopoietin 1 signaling through the endothelial receptor tyrosine kinase Tie2. Ectodomain cleavage of the encoded protein relieves inhibition of Tie2 and is mediated by multiple factors including vascular endothelial growth factor. Alternatively spliced transcript variants encoding multiple isoforms have been observed for this gene. [provided by RefSeq, Nov 2011]

Product images:



Circular map for RG207771