

Product datasheet for **RG207713**

Talin 1 (TLN1) (NM_006289) Human Tagged ORF Clone

Product data:

Product Type:	Expression Plasmids
Product Name:	Talin 1 (TLN1) (NM_006289) Human Tagged ORF Clone
Tag:	TurboGFP
Symbol:	Talin 1
Synonyms:	ILWEQ; talin-1; TLN
Mammalian Cell Selection:	Neomycin
Vector:	pCMV6-AC-GFP (PS100010)
E. coli Selection:	Ampicillin (100 ug/mL)
ORF Nucleotide Sequence:	>RG207713 representing NM_006289 Red=Cloning site Blue=ORF Green=Tags(s)

TTTTGTAATACGACTCACTATAGGGCGGCCGGAATTCGTCGACTGGATCCGGTACCGAGGAGATCTGCC
GCC**CGATCGCC**

ATGGTTGCACTTTCACTGAAGATCAGCATTGGGAATGTGGTGAAGACGATGCAGTTTGAGCCGTCTACCA
TGGTGTACGACGCTGCCGCATCATTCTGAGCGGATCCCAGAGGCCCCAGCTGGTCTCCAGCGACTT
TGGGCTCTTTCTGTCAGATGATGACCCAAAAAGGGTATATGGCTGGAGGCTGGGAAAGCTTTGGACTAC
TACATGCTCCGAAATGGGACACTATGGAGTACAGGAAGAAACAGAGACCCCTGAAGATCCGTATGCTGG
ATGGAAGTGTGAAGACGATCATGGTGGATGACTCTAAGACTGTCACTGACATGCTCATGACCATCTGTGC
CCGATTGGCATACCAATCATGATGAATATTCATTGGTTCGAGAGCTGATGGAAGAGAAAAAGGAGGAA
ATAACAGGGACCTTAAGAAAGGACAAGACATTGCTGCGAGATGAAAAGAAGATGGAGAACTAAAGCAGA
AATTGCACACAGATGATGAGTTGAACTGGCTGGACCATGGTCCGGACACTGAGGGAGCAGGGTGTAGAGGA
GCACGAGACGCTGCTGCTGCGGAGGAAGTTCTTTACTCAGACCAGAATGTGGATTCCCGGGACCCTGTA
CAGCTGAACCTCCTGTATGTGCAGGCACGAGATGACATCCTGAATGGCTCCCACCCTGTCTCCTTTGACA
AGGCCTGTGAGTTTGCTGGCTTCCAATGCCAGATCCAGTTTGGGCCCCACAATGAGCAGAAGCACAAGGC
TGGCTTCTTGACCTGAAGGACTTCTGCCAAGGAGTATGTGAAGCAGAAGGGAGAGCGTAAGATCTTC
CAGGCACACAAGAATTGTGGCAGATGAGTGGATTGAGGCCAAGTCCGCTACGTGAAGCTAGCCCGTT
CTCTCAAGACTTACGGTGTCTCCTTCTTCTGGTGAAGGAAAAAATGAAAGGGAAGAACAAGCTAGTGCC
CAGGCTTCTGGGCATACCAAGGAGTGTGTGATGCGAGTGGATGAGAAGACCAAGGAAGTATCCAGGAG
TGGAACTCACCAACATCAAACGCTGGGCTGCGTCTCCAAAAGCTTACCCTGGATTTTGGAGATTACC
AAGATGGCTATTACTCAGTACAGACAACGAAGGGGAGCAGATTGCACAGCTCATTGCCGGCTACATCGA
TATCATCTGAAGAAGAAAAAAGCAAGGATCACTTTGGGCTGGAAGGAGATGAGGAGTCTACTATGCTG
GAGGACTCAGTGTCCCCAAAAAGTCAACAGTCTGCAGCAGCAATAACAACGGGTGGGAAAGTGGAGC
ATGGCTCTGTGGCCCTGCCTGCCATCATGCGCTCTGGAGCCTCTGGTCTGAGAAATTTCCAGGTGGCGAG
CATGCCCTGCCAGCAGCAGATTACCAGCGCCAGATGCACCGAGGACACATGCCTCCTGACTTCA



[View online »](#)

GCCCAGCAGGCACTCACTGGAACCATTAACCTCCAGCATGCAGGCCGTGCAGGCTGCCAGGCCACCTGG
 ATGACTTTGACTCTGCGCCTCTTGGCCAGGATGCTGCCTCTAAGGCCTGGCGTAAAAACAAGATGGA
 TGAATCAAAGCATGAGATCCACTCTCAGGTAGATGCCATCACAGCTGGTACTGCGTCTGTGGTGAACCTG
 ACAGCAGGGGACCTGCTGAGACAGACTATACCGCAGTGGGCTGTGCAGTACCACAATCTCTCCAACC
 TGACGGAGATGTCCCGTGGGGTGAAGCTGCTGGCTGCCTTGTGGAGGACGAAGGCGGCAGTGGTCGGCC
 CCTGTTGCAGGCAGCAAAGGGCCCTTGGGGAGCAGTGTGCAACTGCTGCGCAGTGCCAACCCAGCCAGT
 GCTGAGCCCGTCAAGACTGCTGCAAGCAGCTGGGAACGTGGCCAGGCCAGTGGGGAGCTGTTGCAAC
 AAATTGGGGAAAGTGATACTGACCCCACTTCCAGGATGCGCTAATGCAGCTCGCCAAAGCTGTGGCAAG
 TGCTGCAGCTGCCTGGTCTCAAGGCCAAGAGTGTGGCCAGCGGACAGAGGACTCGGGACTTCAGACC
 CAAGTTATTGCTGCAGCAACACAGTGTGCCCTATCCACTTCCCAACTAGTGGCCTGTACTAAGTGGTGG
 CACCTACAATCAGCTCACCTGTCTGCCAAGAGCAACTGGTGGAGGCTGGACGACTGGTAGCCAAAGCCGT
 GGAGGGCTGTGTCTGCCTCCCAGGCAGCTACAGAGGATGGGCAACTGTTGCGAGGGGTAGGAGCAGCA
 GCCACAGCTGTCACCCAGGCCCTAAATGAGCTGCTGCAGCATGTAAAGCCCATGCCACAGGGGCTGGGC
 CTGCTGGCCGTTATGACCAGGCTACTGACACCATCCTAACCGTCACTGAGAACATCTTTAGCTCCATGGG
 TGATGCTGGGGAGATGGTGCACAGGCCCGCATCTGGCCCAAGCCACATCTGACCTGGTCAATGCCATC
 AAGGCTGATGCTGAGGGGAAAGTGATCTGGAGAACTCCCGCAAGCTCTTAAGTGTGCCAAGATCCTAG
 CTGATGCCACAGCCAAGATGGTAGAGGCTGCCAAGGGAGCAGCTGCCACCCTGACAGTGAAGGAGCAGCA
 GCAGCGCTGCGGGAGGCAGCTGAGGGGCTGCGCATGGCCACCAATGCAGCTGCGCAGAATGCCATCAAG
 AAAAAGCTGGTGCAGCGCCTGGAGCATGCAGCCAAGCAGGCTGCAGCCTCAGCCACACAGACCATCGCTG
 CAGCTCAGCACGCAGCCTCTACCCCAAGGCCCTGCGCGCCCCAGCCCTGCTGGTGCAGAGCTGCAA
 GGCAGTGGCAGAGCAGATTCCACTGCTGGTGCAGGGCGTCCGAGGAAGCCAAGCCAGCCTGACAGCCCC
 AGCGCTCAGCTTGCCTCATTGCTGCCAGCCAGAGCTTCTGCAGCCAGGTGGGAAGATGGTGCAGCTG
 CAAAGGCCTCAGTGCCAACGATTACAGACCAGGCTTCCAGCCATGCAGTGAAGTGTGCCAAGAACCT
 GGGCACCGCGCTGGCTGAACCTCCGGACGCTGCCAGAAGGCTCAGGAAGCATGTGGACCTTTGGAGATG
 GATTCTGCACTGAGTGTGGTACAGAATCTAGAGAAAGATCTACAGGAAGTGAAGGCAGCAGCTCGAGATG
 GCAAGCTTAAACCCTTACCTGGGGAGACAATGGAGAAGTGTACCCAGGACCTGGGCAACAGCACCAAAGC
 CGTGAGCTCAGCCATCGCCAGCTACTGGGAGAGGTTGCCAGGGCAATGAGAATTATGCAGGATTGCA
 GCTCGGGATGTGGCAGGTGGGCTGCGGTCACTGGCCAGGCCGCTAGGGGAGTGCCTGCACTGACGTCAG
 ATCCTGCAGTGCAGGCCATTGTACTTGATACGGCCAGTGTGTGTTGACAAGGCCAGCAGCCTCATTGA
 GGAGGCGAAAAAGGCAGCTGGCCATCCAGGGGACCTGAGAGCCAGCAGCGGCTTGGCCAGTGGCTAAA
 GCAGTGACCCAGGCTCTGAACCCTGTGTGAGCTGCCTACCTGGCCAGCGGATGTGGATATGCCCTGA
 GGGCAGTTGGAGATGCCAGCAAGCGACTCCTGAGTGACTCGCTTCTCCTAGCACTGGGACATTTCAAGA
 AGCTCAGAGCCGTTGAATGAAGCTGCTGCTGGGCTGAATCAGGCAGCCACAGAAGTGGTGCAGGCCCT
 CGGGGAACCCCTCAGGACCTGGCTCGAGCCTCAGGCCGATTTGGACAGGACTTCAGCACCTTCTGGAAG
 CTGGTGTGGAGATGGCAGGCCAGGCTCCGAGCCAGGAGGACCCAGCCAAAGTGTGTCCAACCTTGAAGGG
 CATCTCCATGTCTTCAAGCAAATTTCTTGGCTGCCAAGGCCCTGTCCACGGACCTGTGCCCTAAC
 CTCAAGAGTCAGCTGGCTGCAGTGCAGGGCAGTAAGTACAGCATCAATCAGCTCATCACTATGTGCA
 CCCAGCAGGACCCGGCCAGAAGGAGTGTGATAACGCCCTGCGGGAATTGGAGACGGTCCGGGAACCT
 GGAGAACCCAGTCCAGCCATCAATGACATGCTCCTACTTTGGTTGCTGGACAGTGAATGGAGAACTCA
 AAGGTGCTGGGCGAGGCCATGACTGGCATCTCCAAAATGCCAAGAACGAAACCTGCCAGATTTGGAG
 ATGCCATTTCCACAGCCTCAAAGGCACTTTGTGGCTTACCGAGGCAGCTGCACAGGCTGCATATCTGGT
 TGGTGTCTCTGACCCCAATAGCCAAGCTGGACAGCAAGGGCTAGTGGAGCCACACAGTTTGCCCGTGA
 AACCAGGCAATTCAGATGGCCTGCCAGAGTTTGGGAGAGCCTGGCTGTACCCAGGCCAGGTGCTCTCTG
 CAGCCACCATTGTGGCTAAACACACCTCTGCACTGTGTAACAGCTGTGCGCTGGCTTCTGCCGTACCAC
 CAATCCTACTGCCAAGCGCCAGTTTGTACAGTACAGCAAGGAGTGGCCAAACAGCACAGCTAATCTGTG
 AAGACCATCAAGGCGCTAGATGGGGCTTACAGAGGAGAACCGTGGCCAGTGGCAGCAGCAACAGCCC
 CTCTGCTGGAGGCTGTGGACAATCTGAGTGCCTTTGCGTCCAACCCTGAGTTCTCCAGCATCTGCCCA
 GATCAGCCCTGAGGGTGGGCTGCCATGGAGCCATTGTGATCTCTGCCAAGACAATGTTAGAGAGTGGC
 GGGGACTCATCCAGACAGCCCGGGCCCTCGCAGTCAATCCCGGGACCCCGAGCTGGTGGTGGTGG
 CCGGCCACTCCCGTACTGTCTCAGACTCCATCAAGAAGCTAATTACAAGCATGAGGGACAAGGCTCCAGG
 GCAGCTGGAGTGTGAAACGGCCATTGCAGCTCTGAACAGTTGTCTACGGGACCTAGACCAGGCTTCCCTC
 GCTGCAGTCAGCCAGCAGCTTGTCCCGTGGGGAATCTCTCAAGAGGCTTGCACACTCAGATGCTCA

CTGCAGTCCAAGAGATCTCCCATCTCATTGAGCCGCTGGCCAATGCTGCCCGGGCTGAAGCCTCCCAGCT
GGGACACAAGGTGTCCCAGATGGCGCAGTACTTTGAGCCGCTCACCTGGCTGCAGTGGGTGCTGCCTCC
AAGACCTGAGCCACCCGAGCAGATGGCACTCCTGGACCAGACTAAAACATTGGCAGAGTCTGCCTCG
AGTTGCTATACACTGCCAAGGAGGCTGGTGGTAACCCAAAGCAAGCAGCTCACACCCAGGAAGCCCTGGA
GGAGGCTGTGCAGATGATGACCGAGGCCGTAGAGGACCTGACAACAACCTCAACGAGGCAGCCAGTGT
GCTGGGGTCGTGGGTGGCATGGTGGACTCCATCACCCAGGCCATCAACCAGCTAGATGAAGGACCAATGG
GTGAACCAGAAGTTCCCTCGTGGATTACCAAACAATATGGTGCGGACAGCCAAGGCCATTGCAGTGAC
CGTTCAGGAGATGGTTACCAAGTCAAACACCAGCCAGAGGAGCTGGGCCCTCTTGCTAACCCAGCTGACC
AGTGACTATGGCCGTCTGGCCTCGGAGGCCAAGCCTGCAGCGGTGGCTGTGAAAATGAAGAGATAGGTT
CCCATATCAAACACTGGGTACAGGAGCTGGGCCATGGCTGTGCCGCTCTGGTCACCAAGGCAGGCCCT
GCAGTGCAGCCCCAGTGATGCCTACACCAAGAAGGAGCTCATAGAGTGTGCCCGGAGAGTCTCTGAGAAG
GTCTCCCACGCTCCTGGCTGCGCTCCAGGCTGGGAATCGTGGCACCCAGGCCTGCATCACAGCAGCCAGCG
CTGTGTCTGGTATCATTGCTGACCTCGACACCACCATCATGTTGCCACTGCTGGCACGCTCAATCGTGA
GGTACTGAAACTTTGCTGACCACCGGAGGGCATCCTGAAGACTGCGAAGGTGCTGGTGGAGGACACC
AAGGTCTGGTGAAAACGCAGCTGGGAGCCAGGAGAAGTTGGCGCAGGCTGCCAGTCTCCGTGGCGA
CCATCACCCGCTCGCTGATGTGGTCAAGCTGGGTGCAGCCAGCCTGGGAGCTGAGGACCTGAGACCCA
GGTGGTACTAATCAACGAGTGAAGATGTAGCCAAAGCCCTGGGAGACCTCATCAGTGCAACGAAGGCT
GCAGCTGGCAAAGTTGGAGATGACCCTGCTGTGTGGCAGCTAAAGAACTCTGCCAAGGTGATGGTGACCA
ATGTGACATCATTGCTTAAGACAGTAAAAGCCGTGGAAGATGAGGCCACCAAAGGCACTCGGGCCCTGGA
GGCAACCACAGAACACATACGGCAGGAGCTGGCGGTTTTCTGTTCCCGAGAGCCACTGCCAAGACCTCT
ACCCAGAAAGACTTCATCCGAATGACCAAGGGTATCACCATGGCAACCGCCAAGGCCGTTGCTGTGGCA
ATTCCTGTGCCAGGAAGATGTCATTGCCACAGCCAATCTGAGCCGCCGTGCTATTGCAGATATGCTTGC
GGCTTGAAGGAAGCAGCTTACCACCCAGAAGTGGCCCTGATGTGCGGCTTCGAGCCCTGCACTATGGC
CGGGAGTGTGCCAATGGCTACCTGGAAGTGTGGACCATGTAAGTGTGACCTGCAGAAGCCAAGCCAG
AACTGAAGCAGCAGTTGACAGGACATTCAAAGCGTGTGGCTGGTTCGGTCACTGAGCTCATCCAGGCTGC
TGAAGCCATGAAGGGAACAGAATGGGTAGACCCAGAGGACCCACAGTCATTGCTGAGAATGAGCTCCTG
GGAGCTGCAGCCGCCATTGAGGCTGCAGCCAAAAGCTAGAGCAGCTGAAGCCCCGGGCCAAACCAAGG
AGGCAGATGAGTCCTTGAACCTTTGAGGAGCAGATACTAGAAGCTGCCAAGTCCATTGCAGCAGCCACCAG
TGCACTGGTAAAGGCTGCGTCCGCTGCCAGAGAGAAGTGTGGCCAAAGGAAGGTGGTGGCATTCCA
GCCAATGCACTGGACGATGGGCAGTGGTCCAGGGCCTCATTCTGCTGCCCGGATGGTGGCTGCGGCCA
CCAACAATCTGTGTGAGGCAGCCAATGCAGCTGTACAAGGCCATGCCAGCCAGGAGAAGCTCATCTCATC
AGCCAAGCAGGTAGCTGCCTCCACAGCCAGCTCCTTGTGGCCTGCAAGGTCAAGGCTGACCAGGACTCG
GAGGCAATGAAACGACTTCAGGCTGCTGGAACGCAAGTGAAGCGAGCCTCAGATAATCTGGTGAAGCAG
CACAGAAGGCTGCAGCCTTTGAAGAGCAGGAGAATGAGACAGTGGTGGTGAAGAGAAGATGGTTGGCGG
CATTGCCAGATCATCGCAGCACAGGAAGAAATGCTTCGGAAGGAACGAGAGCTGGAAGAGGCGCGGAAG
AAACTGGCCAGATCCGGCAGCAGCAGTACAAGTTTCTGCCTTCAGAGCTTCGAGATGAGCAC

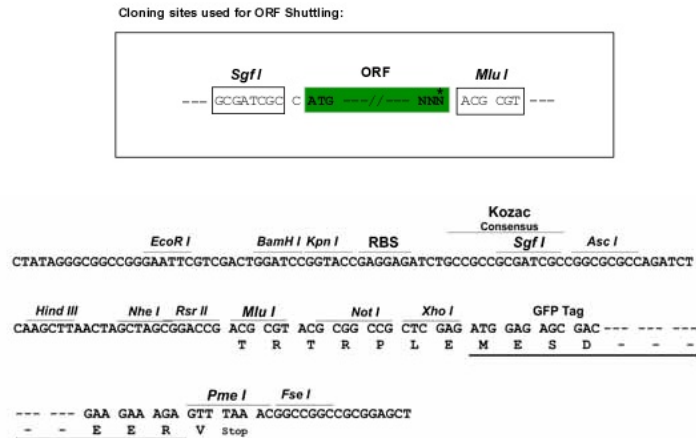
ACGCGTACGCGGCCGCTCGAG - GFP Tag - GTTTAA

Protein Sequence: >RG207713 representing NM_006289
 Red=Cloning site Green=Tags(s)

MVALSLKISIGNVVKTMQFEPSTMVYDACRIIRERIPEAPAGPPSDFGLFLSDDDPKKGIWLEAGKALDY
 YMLRNGDTMEYRKKQRPLKIRMLDGTVKTIMVDDSKTVDMLMTCARIGITNHDEYSLVRELMEEKKEE
 ITGTLRKDKTLRDEKKMEKLLKQLHTDDELNWLHDGRTLREQGVEEHETLLLRKFFYSQDNVDSRDPV
 QLNLLYVQARDDILNGSHPVSFDKACEFAGFQCQIQFGPHNEQKHKAGFLDLKDFLPKEYVKQGERKIF
 QAHKNCGQMSIEIAKVRVYKLRSLKTYGVSFVFLVKEKMKGNKLVPRLLGITKECVMRVDEKTKEVIQE
 WNLTNIKRWAASPKSFTLDFGDYQDGYYSVQTTEGEQIAQLIAGYIDIILKKKKSKDHFLEGEDEESTML
 EDSVSPKKSTVLQQYNRVVGKVEHGSVALPAIMRSGASGPENFQVGSMPPAQQQITSGQMHRGHMPPLTS
 AQQALTGTINSSMQAVQAAQATLDDFDLPLPQQDAASKAWRKNKMDSEKHEIHSQVDAITAGTASVVNL
 TAGDPAETDYAVGCAVTTISSNLTEMSRGVKLLAALLEDEGGSGRPLLQAAGLAGAVSELLRSAPAS
 AEPRQNLQAAGNVGQASGELLQQIGESDTPHFQDALMQLAKAVASAAAALVLKAKSVAQRTEDSGLQT
 QVIAAATQCALSTSQLVACTKVVAPTISSPVCQEQLVEAGRLVAKAVEGCVSASQAATEDGQLLRGVGAA
 ATAVTQALNELLQHVKAHATGAGPAGRYDQATDITLTVTENIFSSMGDAGEMVRQARILAQATSDLVNAI
 KADAEGESDLENSRKLLSAAKILADATAKMEVAAKGAAPDSEEQQRLEAAEGLRMTANAAQNAIK
 KKLVRLEHAQAASATQTIAAAQHAASPKASAGPQPLLVSCKAVAEQIPLLVQGVRSQAQPDS
 SAQLALIAASQSFLQPGGKMVAASVPTIQDQASAMQLSQCAKNLGTALAEALTAQAQAEACGPLEM
 DSALSVVQNLKDLQEVKAAARDGKLPKLPGETMEKCTQDLGNSTKAVSSAIAQLLGEVAQGNENYAGIA
 ARDVAGGLRSLAARGVAALSDPAVQAIVLDTASDVLKASSLIEEAKKAAGHPGDPESSQRLAQVAK
 AVTQALNRCVSLPGQRVDNALRAVGDAKRLSDSLPPSTGTFQEAQSRLEAAAGLNQAATELVQAS
 RGTTPQDLARASGRFGQDFSTFLEAGVEMAGQAPSQEDRAQVSNLKGISMSSKLLLAALKALSTDPAAPN
 LKSQLAAAARAVTDSINQLITMCTQQAPGQKCEDNALRELETVRELLENPVQPINDMSYFGCLDSVMENS
 KVLGEAMTGISQNAKNGNLPEFGDAISTASKALCGFTEAAAQAAYLVGVSDPNSQAGQQGLVEPTQFARA
 NQAIQMACQSLGEPGCTQAQVLSAATIVAKHTSALCNSCRLASARTTNPATAKRQFVQSAKEVANSTANLV
 KTIKALDGAFTENRAQCRAATAPLLEAVDNLASFASNPEFSSIPAQISPEGRAAMEPIVISAKTMLESA
 GGLIQTARALAVNRPDPPSWSVLAGHSRTVSDSIKKLITSMRDKAPGQLECEATAAALNSCLRDLDQASL
 AAVSQQLAPREGISQEALHTQMLTAVQEI SHLIEPLANAARAEASQLGHKVSQMAQYFEPLTLAAVGAAS
 KTL SHPQQMALLDQTKT LAESALQLLYTAKEAGGNPKQAHTQEAL EEAVQMMTEAVEDLTTTLNEAASA
 AGVVGGMVDSITQAINQLDEGPMGEPEGSFVDYQTTMVRTAKAIAVTVQEMVTKSNTSPEELGPLANQLT
 SDYGRLLASEAKPAVAEAENEIEGSHIKHWVQELGHGCAALVTKAGALQCSPSDAYTKKELIECARRVSEK
 VSHVLAALQAGNRGTQACITAASAVSGIADLDTTIMFATAGTLNREGTETFADHREGILKTAKVLVEDT
 KVLVQNAAGSQEKLAQAAQSSVATITRLADVVKLGAASLGAEDPETQVVLINAVKDVAKALGDLISATKA
 AAGKVGDDPAVWQLKNSAKVMVTNVTSLKTKVAVEDEATKGRAL EATTEHIRQELAVFCSPEPPAKTS
 TPEDFIRMTKGITMATAKAVAAGNSCRQEDVIATANLSRRAIADMLRACKEAAYHPEVAPDVRLRALHYG
 RECANGYLELLDHVLLTLQKPSPELKKQLTGHSKRIVAGSVTELIQAAEAMKGT EWDPEPTVIAENELL
 GAAAAIEAAKKLEQLKPRAKPKEADESLNFEEQILEAAKSIAAATSALVKAASAAQRELVAQKGVGAIP
 ANALDDGQWSQGLISAARMVAAAATNLC EAANAAVQGHASQEKLISSAKQVAASTAQLLVACKVKADQDS
 EAMKRLQAAGNAVKRASDNLV KAAQKAAAFEEQENETVVVKEKMGVGGIAQIIAAQEEMLRKERELEEAR
 KLAQIRQQQYKFLPSELRDEH

TRTRPLE - GFP Tag - V

Restriction Sites: SgfI-MluI

Cloning Scheme:


ACCN: NM_006289

ORF Size: 7623 bp

OTI Disclaimer: The molecular sequence of this clone aligns with the gene accession number as a point of reference only. However, individual transcript sequences of the same gene can differ through naturally occurring variations (e.g. polymorphisms), each with its own valid existence. This clone is substantially in agreement with the reference, but a complete review of all prevailing variants is recommended prior to use. [More info](#)

OTI Annotation: This clone was engineered to express the complete ORF with an expression tag. Expression varies depending on the nature of the gene.

Components: The ORF clone is ion-exchange column purified and shipped in a 2D barcoded Matrix tube containing 10ug of transfection-ready, dried plasmid DNA (reconstitute with 100 ul of water).

Reconstitution Method:

1. Centrifuge at 5,000xg for 5min.
2. Carefully open the tube and add 100ul of sterile water to dissolve the DNA.
3. Close the tube and incubate for 10 minutes at room temperature.
4. Briefly vortex the tube and then do a quick spin (less than 5000xg) to concentrate the liquid at the bottom.
5. Store the suspended plasmid at -20°C. The DNA is stable for at least one year from date of shipping when stored at -20°C.

RefSeq: [NM_006289.2](#), [NP_006280.2](#)

RefSeq Size: 8187 bp

RefSeq ORF: 7626 bp

Locus ID: 7094

UniProt ID: [Q9Y490](#)

Cytogenetics: 9p13.3

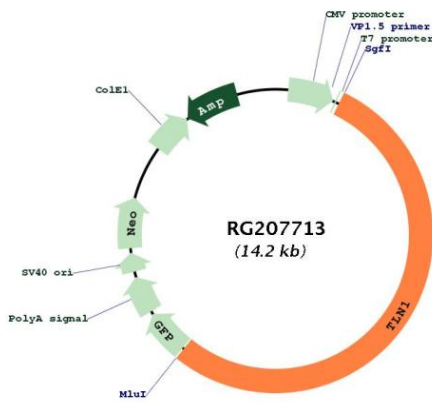
Domains: B41, I_LWEQ

Protein Families: Druggable Genome

Protein Pathways: Focal adhesion

Gene Summary: This gene encodes a cytoskeletal protein that is concentrated in areas of cell-substratum and cell-cell contacts. The encoded protein plays a significant role in the assembly of actin filaments and in spreading and migration of various cell types, including fibroblasts and osteoclasts. It codistributes with integrins in the cell surface membrane in order to assist in the attachment of adherent cells to extracellular matrices and of lymphocytes to other cells. The N-terminus of this protein contains elements for localization to cell-extracellular matrix junctions. The C-terminus contains binding sites for proteins such as beta-1-integrin, actin, and vinculin. [provided by RefSeq, Feb 2009]

Product images:



Circular map for RG207713