

Product datasheet for **RG207705**

AFAP1L2 (NM_001001936) Human Tagged ORF Clone

Product data:

| | |
|---------------------------|---|
| Product Type: | Expression Plasmids |
| Product Name: | AFAP1L2 (NM_001001936) Human Tagged ORF Clone |
| Tag: | TurboGFP |
| Symbol: | AFAP1L2 |
| Synonyms: | CTB-1144G6.4; KIAA1914; XB130 |
| Mammalian Cell Selection: | Neomycin |
| Vector: | pCMV6-AC-GFP (PS100010) |
| E. coli Selection: | Ampicillin (100 ug/mL) |



[View online »](#)

ORF Nucleotide
Sequence:

>RG207705 representing NM_001001936
Red=Cloning site Blue=ORF Green=Tags(s)

TTTTGTAATACGACTCACTATAGGGCGGCCGGAATTCGTCGACTGGATCCGGTACCGAGGAGATCTGCC
GCC**CGGATCGCC**

ATGGAGCGGTACAAAGCCCTGGAACAGCTGCTGACAGAGTTGGATGACTTCTCAAGATTCTTGACCAGG
AGAACCTGAGCAGCACAGCACTGGTGAAGAAGAGCTGCCTGGCGGAGCTCCTCCGGCTTTACACCAAAG
CAGCAGCTCTGATGAGGAGTACATTTATATGAACAAAGTGACCATCAACAAGCAACAGAATGCAGAGTCT
CAAGGCAAAGCGCCTGAGGAGCAGGGCCTGCTACCCAATGGGAGCCAGCCAGCACTCCTCGGCCCTC
AGAAGAGCCTTCCAGACCTCCCGCCACCAAGATGATTCCAGAACGAAACAGCTTGCCATCCAAAGAC
GGAGTCTCCAGAGGGCTACTATGAAGAGGCTGAGCCATATGACACATCCCTCAATGAGGACGGAGAGGCT
GTGAGCAGCTCCTACGAGTCTACGATGAAGAGGACGGCAGCAAGGGCAAGTCGGCCCTTACCAGTGCC
CCTCGCCGGAGGCCGCATCGAGCTGATGCGTGACGCCCGCATCTGCGCCTTCTGTGGCGCAAGAAGTG
GCTGGGACAGTGGCCAAGCAGCTCTGTGTCATCAAGGACAACAGGCTTCTGTGCTACAAATCCTCCAAG
GACCACAGCCCTCAGCTGGACGTGAACCTACTGGCAGCAGCGTATTCAAGGAGAAGCAAGTCCGGA
AGAAGGAGCACAAGCTGAAGATCACACCGATGAATGCCGATGTGATTGTGCTGGGCTGCAGAGCAAGGA
CCAGGCTGAGCAGTGGCTCAGGGTCATCCAGGAAGTGAGCGGCCTGCCTCCGAAGGAGCATCTGAAGGA
AACCAGTACACCCGGATGCCAGCGCTTAACTGCCAGAAACCAGATATAGCTGAGAAGTACCTGTCCG
CTTCAGAGTATGGGAGCTCCGTGGATGGCCACCCTGAGGTCCAGAAACCAAGAGCTCAAGAAGAAATG
TTCTGTGGCCTCAAACCTGAGCAACCTAATGAATCTGGGCAGGAAGAAATCCACCTCACTGGAGCCTGTG
GAGAGGTCCTCGAGACATCCAGTTACCTGAACGTGCTGGTGAACAGCCAGTGAAGTCTCGTGGTGCT
CTGTGAGGACAATCACCTGCATTCTACCAGGACCCGAAACCGGAGCAAGGTGGCCAGCAACCCCTCAG
CCTGGTGGGCTGCGAGGTGGTCCAGACCCAGCCCGACACCTCTACTCCTTCCGCATCCTCCACAAG
GGCAGGAGCTGGCCAAGCTTGAGGCCAAGTCTCCGAGGAAATGGGCCACTGGCTGGGTCTCTGCTCT
CTGAGTCAGGCTCCAAGACAGACCCAGAAGAGTTCACCTACGACTATGTGGATGCCGATAGGGTCTCCTG
TATTGTGAGTGGCCAAAACTCTCTTACTGATGCAGAGAAAGTTCTCAGAGCCCAACACTTACATC
GATGGCCTGCCTAGCCAGGACCCAGGAGGAGCTGTATGACGACGTGGACCTGTGAGAGCTCACAGCTG
CGGTGGAGCCTACCGAGGAAGCCACCCCTGTTGCAGATGACCCAAATGAGAGAGAATCTGACCGGGTGA
CCTGGACCTCACACCTGTCAAGTCTTTCTGCATGGCCCCAGCAGTGCACAGGCCAGGCCTCCTCCCCG
ACGTTGTCTGCCTGGACAATGCAACTGAGGCCCTCCCGCAGACTCAGGCCAGGTCCCACCCAGATG
AGCCCTGCATAAAGTGTCCAGAGAACCTGGGAGAACAGCAGCTGGAGAGTTTGGAGCCAGAGGATCCTTC
CCTGAGAAATCACACCGTCAAAATCCAGACGGAACAGCAGAGAATCTCCTTCCCACCGAGCTGCCGGAT
GCCGTGGTGGCCACCCACCTGGTGCCAGCCACCTGTGAAGGACAGGTTGCGCGTGACCAGTGCAGAGA
TCAAGCTTGGCAAGAATCGGACAGAAGCTGAGGTGAAGCGGTACACAGAGGAGAAGGAGAGGCTTAAAA
GAAGAAGGAAGAATCCGGGGCACCTGGCTCAGCTCCGAAAGAGAAACGGGAGCTAAAGGAAACCCTA
CTGAAATGCACAGACAAGGAAGTCTGGCAGCCTGGAGCAGAAGCTGAAGGAAATTGACGAGGAGTGCC
GGGCGAGGAGAGCAGGCGGTGGACCTGGAGCTCAGCATCATGGAGGTGAAGGACAACCTGAAGAAGGC
TGAGGCAGGGCCTGTGACGTTAGGCACCACCGTGGACACCACCCACCTGGAGAATGTGAGCCCCGCCCC
AAAGTGTACACCTGCCTCTGCCAGACTGTACCCAGTCAACTCTGCAACCACACTCAAGAACAGGC
CTCTCTCGGTGCTGTCAGGCAAAGGCACTGTACTCCAGAAAGCCAAGGAATGGGAGAAGAAAGGAGC
AAGT

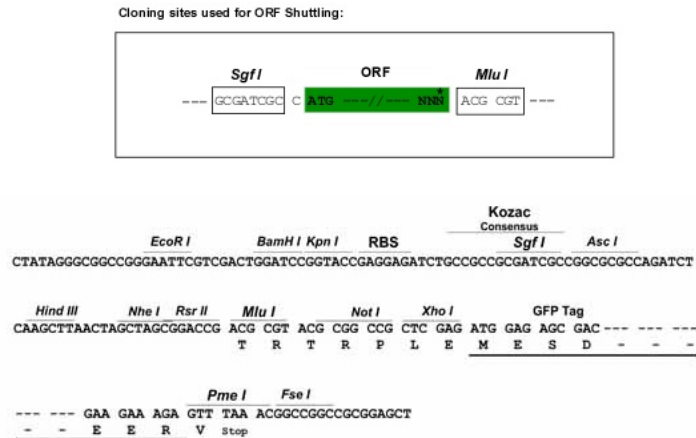
ACGCGTACGCGGCCGCTCGAG – GFP Tag – GTTTAA

Protein Sequence: >RG207705 representing NM_001001936
 Red=Cloning site Green=Tags(s)

```
MERYKALEQLLTELDDFLKILDQENLSSSTALVKKSCLAELLRLYTKSSSSDEEYIYMNKVTINKQNAES
QGKAPEEQGLLPNGEPSQHSSAPQKSLPDLPPPKMIPERKQLAIPKTESPEGYYEEAEPYDTSLNEDGEA
VSSSYESYDEEDGSKGKSAPYQWPSPHAGIELMRDARICAFWRKKWLGQWAKQLCVIKDNRLLCYKSSK
DHSPQLDVNLLGSSVIHKEKQVRKKEHKLKIPMNADVIVLGLQSKDQAEQWLRVIQEVSGLPSEGASEG
NQYTPDAQRFNCPDIAEKYLSASEYGSVDGHPEVPETKDVKKKCSAGLKLNLMLGRKKSTSLPEV
ERSLETSSYLVNVLVNSQWKSRCVSRDNLHLYFYQDRNRSKVAQQPLSLVGCEVVPDPSPDHLYSFRILHK
GEELAKLEAKSSEEMGHWLGLLSESGSKTDPEEFYDYVDADRVSCIVSAAKNSLLMQRFSEPNYI
DGLPSQDRQEELYDDVDLSELAAVEPTTEATPVADDPNERESDRVYLDLTPVKSFLHGPSSAQQAASSP
TSLCLDNATEALPADSGPGPTPDEPCIKCPENLGEQQLESLEPEDPSLRITTVKIQTEQQRISFPPPCPD
AVVATPPGASPPVKDRLRVTSAEIKLGKNRTEAEVKRYTEEKERLEKKKEEIRGHLAQLRKEKRELKEL
LKCTDKEVLASLEQKLKEIDEECRGEESRRVDLELSIMEVKDNLKKAAGPVTGTGTTVDTHLENVSPRP
KAVTPASAPDCTPVNSATTLKNRPLSVVVTGKGTVLQKAKEWEKKGAS
```

TRTRPLE - GFP Tag - V

Restriction Sites: SgfI-MluI

Cloning Scheme:


ACCN: NM_001001936

ORF Size: 2454 bp

OTI Disclaimer: The molecular sequence of this clone aligns with the gene accession number as a point of reference only. However, individual transcript sequences of the same gene can differ through naturally occurring variations (e.g. polymorphisms), each with its own valid existence. This clone is substantially in agreement with the reference, but a complete review of all prevailing variants is recommended prior to use. [More info](#)

OTI Annotation: This clone was engineered to express the complete ORF with an expression tag. Expression varies depending on the nature of the gene.

Components: The ORF clone is ion-exchange column purified and shipped in a 2D barcoded Matrix tube containing 10ug of transfection-ready, dried plasmid DNA (reconstitute with 100 ul of water).

Reconstitution Method:

1. Centrifuge at 5,000xg for 5min.
2. Carefully open the tube and add 100ul of sterile water to dissolve the DNA.
3. Close the tube and incubate for 10 minutes at room temperature.
4. Briefly vortex the tube and then do a quick spin (less than 5000xg) to concentrate the liquid at the bottom.
5. Store the suspended plasmid at -20°C. The DNA is stable for at least one year from date of shipping when stored at -20°C.

RefSeq: [NM_001001936.1](#), [NP_001001936.1](#)

RefSeq Size: 3997 bp

RefSeq ORF: 2457 bp

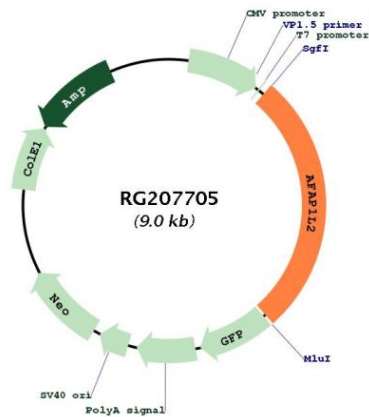
Locus ID: 84632

UniProt ID: [Q8N4X5](#)

Cytogenetics: 10q25.3

Gene Summary: May play a role in a signaling cascade by enhancing the kinase activity of SRC. Contributes to SRC-regulated transcription activation.[UniProtKB/Swiss-Prot Function]

Product images:



Circular map for RG207705