

Product datasheet for **RG207690**

SUSD2 (NM_019601) Human Tagged ORF Clone

Product data:

Product Type:	Expression Plasmids
Product Name:	SUSD2 (NM_019601) Human Tagged ORF Clone
Tag:	TurboGFP
Symbol:	SUSD2
Synonyms:	BK65A6.2; W5C5
Mammalian Cell Selection:	Neomycin
Vector:	pCMV6-AC-GFP (PS100010)
E. coli Selection:	Ampicillin (100 ug/mL)



[View online »](#)

ORF Nucleotide
Sequence:

>RG207690 representing NM_019601
 Red=Cloning site Blue=ORF Green=Tags(s)

TTTTGTAATACGACTCACTATAGGGCGGCCGGGAATTCGTCGACTGGATCCGGTACCGAGGAGATCTGCC
 GCC**CGGATCGCC**

ATGAAGCCAGCCCTCTGCCCTGGGCCCTGCTGCTGCTGGCGACAGCCCTCGGCCGGGCCCGGACCCA
 CAGCAGATGCCCAAGAGAGCTGCTCCATGCGCTGTGGCGCCCTGGACGGGCCATGTTCTGCCACCCGAC
 GTGCTCTGGCCTTGGCACCTGCTGCTTGGATTTCCGGGACTTCTGCCTGGAGATATTGCCCTACTCAGGA
 TCCATGATGGGCGCAAGGACTTTGTGGTGCAGGCACTTCAAGATGTCCAGCCCCACAGACGCCAGTGTGA
 TCTGCAGGTTTAAGGACAGCATCCAGACCCTCGGCCATGTGGACTCCTCCGGGCAAGTGCCTGTGTGTC
 ACCTCTGCTCTATGAGAGCGCCGCATCCCCTTCACTGTGTCACTGGACAACGGCCACTCCTTCCCTCGT
 GCGGGCACCTGGCTGGCTGTGCACCCCAACAAAGTGTCAATGATGGAGAAGAGCGAGTTGGTGAACGAGA
 CGCGTTGGCAATACTACGGCACCCCAACACCTCAGGCAACCTCAGCCTGACCTGGCATGTCAAGTCGT
 GCCCAGCAGACCATCACCATCGAAGTGTGGGGCTACGAGGAGACAGGAATGCCCTACTCACAGGAGTGG
 ACTGCAAAGTGGTCGTACCTGTACCCCTGGCCACACACATCCCCAACTCCGGCTTTTCACTTTACCC
 CAAAACCTGCTCCTCCCAGCTACCAAGAGATGGCGAGTGGGTGCACCTTCGGATCATCGACAGCAAAAATTA
 CGCAGGGCAGAAGGACGTGCAGGCGCTCTGGACCAACGACCACGCACTGGCCTGGCACCTGAGCGATGAC
 TTCGAGAGGACCTGTGGCCTGGGCACGAACTCAGTGCAGGCTGGGAGGAGCTGGAGGATCAGCTGC
 CCAACTTCTGGAGGAGCTGCCGACTGCCCTGCACCCTGACCCAGGCCCGGGCTGACTCCGGCCGCTT
 CTTACGGACTACGGCTGTGACATGGAGCAGGGCAGCGTGTGCACCTACCACCCCGGGCCGTGACTGT
 GTGCGTTCTGTGCAGGCCAGCCTCCGGTACGGCTCAGGTACAGTGTGCTACACAGCGGACGGGACGC
 AGTCCTGACAGCTGACTCCAGCGCGGCAGCACTCCCGACCCGGGCCATGACTGGGGCGCACCCCGTT
 CCGCACGCCACCCCGAGTGCCCGCATGTCCACTGGCTCTACGATGTCTCAGCTTCTATTACTGCTGC
 CTCTGGGCACCCGACTGCCCCCGCTACATGCAACGGCGGCCCTCCAATGACTGCCCAACTACCGCCCC
 CAAGACTGGCCTCCGCTTCGGAGACCCACACTTTGTGACCTTCGACGGCACCAACTTCACATTCAATGG
 GCGCGGAGAGTACGTGCTGCTGGAGGCAGCGCTGACCGACCTGAGGGTGCAGGCGCGGGCCAGCCCGGG
 ACGATGTCCAACGGCACGGAGACCCGTGGCACTGGGCTGACCGCAGTGGCCGTCCAGGAGGGCAACTCAG
 ATGTGGTGAAGTCAGGCTGGCCAACAGGACCGGAGGTCTGGAGGTGCTGCTGAACCAGGAGGTGCTGAG
 CTTACCGAGCAGAGCTGGATGGACCTGAAAGGAATGTTCTGTGCGTGGCTGCCGGGACAGGGTCTCC
 ATCATGCTGGCATCAGGGGCCGGCTGGAGGTCAGCGTGCAGGGCCCGTTCTGAGTGTGTCGCTCCTGC
 TGCTGAGAAGTTCCTACCCACACCCACGGCCTCCTCGGGACACTCAACAACGACCCACCGACGACTT
 CACCCTGCACAGCGGGCGCTCCTGCCCCAGGACCAAGTCCCCAGGAGCTGTTCTGTTGGGGCCAAC
 TGGACCGTGCACAATGCGTCTCCTCCCTGCTCACCTACGATTCTGGTTCCTGGTCCACAACCTCCTGTACC
 AACCCAAGCAGACCCCACTTCGAGCCCTCTTCCCCAGTGAGACCACCTCAACCCAGCCTGGCACA
 AGAGGCAGCCAACTATGTGGGGACGATCATTTCTGCAACTTTGATGTGGCAGCCACTGGGAGCCTGAGC
 ACGGGCACTGCCACTCGGGTGGCCACCAAGCTGCACCAGCGTCGCATGCAGAGCCTGCAGCCAGTGGTGT
 CCTGTGGCTGGCTGGCCCACTCCCAACGGACAAAAGGAGGGCAACAGGTACCTGGCGGGTCCACCAT
 CTACTTCCACTGTGACAACGGCTACAGCCTGGCCGGGGCAGAGACCAGCACCTGCCAGGCTGACGGCAC
 TGGTCTCACCCACCCCGAAGTGCCAGCCAGGACGACGCTACGCGGTGCTGTTGGGCATCATCTTTGGGG
 GCCTCGCGGTGGTGGCGCGGTTGCGCTCGTCTATGTGCTGCTGCGCCGAGGAAGGGCAACACGCACGT
 CTGGGGTGCACAGCCC

AG**CGGACCG**ACGCGTACGCGGCCGCTCGAG - GFP Tag - GTTTAA

Protein Sequence: >RG207690 representing NM_019601
Red=Cloning site Green=Tags(s)

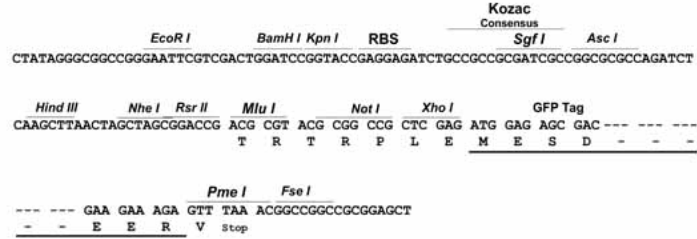
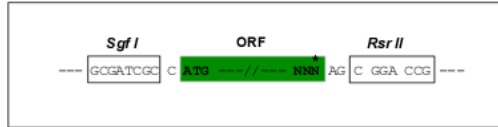
MKPALLPWALLLLATALGPGPGPTADAQESCSMRGALDGPCSCHPTCSGLGTCCLDFRDFCLEILPYSG
SMMGGKDFVVRHFKMSSPTDASVICRFKDSIQTLGHVDSSGQVHCVSPLLYESGRIPFTVSLDNGHSFPR
AGTWLAVHPNKVSMMEKSELVNETRWQYYGTANTSGNLSLTWHVKSLPTQTITIELWGYEETGMPYSQEW
TAKWSYLYPLATHIPNSGSFTFTPKPAPPSYQRWRV GALRIIDSKNYAGQKDVQALWTDNDHALAWHL SDD
FREDPVAWARTQCQAWEELEDQLPNFLEELPDCPCTLTQARADSGRFFTDYGC DMEQGSVCTYHPGAVHC
VRSVQASLRYGSGQCCYADGTQLLTADSSGGSTPDRGHDWGAPPFRTPPRVPSMSHWLYDVL SFYYCC
LWAPDCPRYMQRPSNDCRNYPRLASAFGDPHFVTFDGTNFTFNGRGEYV LLEAAL TDLRVQARAQPG
TMSNGTE TRGTGLTAVAVQEGNSDVVEVRLANRTGGLEVLLNQEVL SFTEQSWMDLKG MFLSVAAGDRVS
IMLASGAGLEVS VQGPFLSVSVLLPEKFLTHTHGLLGT LNDPTDDFTLHSGRVLPPGTSPQELFLFGAN
WTVHNASSLLTYDSWFLVHNFLYQPKHDPTFEPLFPSETTLNPSLAQEAAKLCGDDHFCNFDVAATGSL S
TGTATRVAHQLHQRMSLQPVVSCGWLAPPNGQKEGNRYLAGSTIYFHCDNGYSLAGAETSTCQADGT
WSSPTPKCQPRSYAVLLGII FGGLAVVAVALVYVLLRRRKGNTHVWGAQP

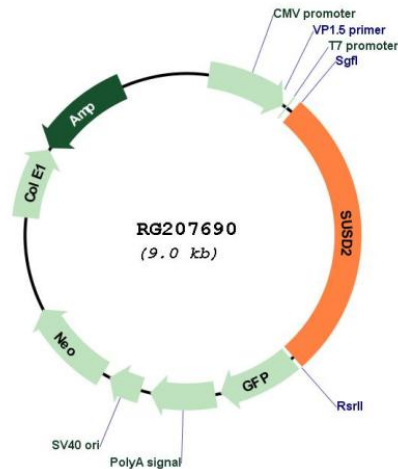
SGPTRRRLE - GFP Tag - V

Restriction Sites: Sgfl-RsrII

Cloning Scheme:

Cloning sites used for ORF Shuttling:



Plasmid Map:


ACCN: NM_019601

ORF Size: 2466 bp

OTI Disclaimer: The molecular sequence of this clone aligns with the gene accession number as a point of reference only. However, individual transcript sequences of the same gene can differ through naturally occurring variations (e.g. polymorphisms), each with its own valid existence. This clone is substantially in agreement with the reference, but a complete review of all prevailing variants is recommended prior to use. [More info](#)

OTI Annotation: This clone was engineered to express the complete ORF with an expression tag. Expression varies depending on the nature of the gene.

Components: The ORF clone is ion-exchange column purified and shipped in a 2D barcoded Matrix tube containing 10ug of transfection-ready, dried plasmid DNA (reconstitute with 100 ul of water).

Reconstitution Method:

1. Centrifuge at 5,000xg for 5min.
2. Carefully open the tube and add 100ul of sterile water to dissolve the DNA.
3. Close the tube and incubate for 10 minutes at room temperature.
4. Briefly vortex the tube and then do a quick spin (less than 5000xg) to concentrate the liquid at the bottom.
5. Store the suspended plasmid at -20°C. The DNA is stable for at least one year from date of shipping when stored at -20°C.

RefSeq: [NM_019601.4](#)

RefSeq Size: 3201 bp

RefSeq ORF: 2469 bp

Locus ID: 56241

UniProt ID: [Q9UGT4](#)

Cytogenetics:	22q11.23
Domains:	CCP, SO, VWD, AMOP
Protein Families:	Transmembrane
Gene Summary:	May be a cytokine receptor for C10ORF99. May be a tumor suppressor; together with C10ORF99 has a growth inhibitory effect on colon cancer cells which includes G1 cell cycle arrest (PubMed:25351403). May play a role in breast tumorigenesis (PubMed:23131994). [UniProtKB/Swiss-Prot Function]