

Product datasheet for **RG207664**

C20orf144 (NM_080825) Human Tagged ORF Clone

Product data:

Product Type: Expression Plasmids
Product Name: C20orf144 (NM_080825) Human Tagged ORF Clone
Tag: TurboGFP
Symbol: C20orf144
Synonyms: dj63M2.6
Mammalian Cell Selection: Neomycin
Vector: pCMV6-AC-GFP (PS100010)
E. coli Selection: Ampicillin (100 ug/mL)
ORF Nucleotide Sequence: >RG207664 representing NM_080825
Red=Cloning site Blue=ORF Green=Tags(s)

TTTTGTAATACGACTCACTATAGGGCGGCCGGAATTCGTCGACTGGATCCGGTACCGAGGAGATCTGCC
 GCCCGATCGCC

ATGGGAACTATAGTTCCCAAAAAGGACCAAGCACCCAAGCAGGCCCGCAAGGAGAGGCCGGCTGACA
TGGACAAGGCCTGGTGGAAATCGTTCCTCAACCACCTCACTCGGAAGAAGCCGGCTACCAGGATCGTGCT
GATTCTCCCCCTGGACAAGCGGCAGCCGCTGGCCAACGCTGGGCAACGGATTGACTACGCGTCCGGCGCT
GGGCTGGGCTCCCCGGCGGCACCCAGATTGCGCGGAGCGGGCGAAGGTAGCGAGCGCGAGCCGAGGATGC
CGTACTGCTGCTGCTGCGGCGCAAGAGGCGCGCGGCCGGAAGAGGGCGGGCCAGGGCAGCTCTGAG
CTGGCCGCGGCTGCTCTCGCGCTTCCGGTCCCCGGGGAAGGCTCCCCGCGAAGCCGGCCCCGCCGAGGAG
CAGCCGCGCAAACGGTGCCGCTGCCCTCGCCCGCAGCTT

AGCGGACCGACGCGTACGCGGCCGCTCGAG - GFP Tag - GTTTAA

Protein Sequence: >RG207664 representing NM_080825
Red=Cloning site Green=Tags(s)

MGNYSHKRTKAPKQARKERPADMKAWSFLNHLTRKKPATRIVLILPLDKRQPLANAGQRIDYASGA
 GLGSPAAPRLRGAGEGSEPRMPVLLLLRRQEARRPEEGGARAALSWPRLLSRFRSPGKAPREAGPAEE
 QPRKRCRCPRPQL

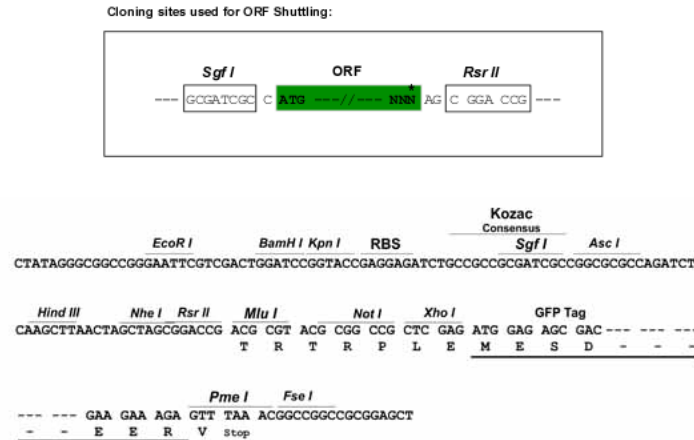
SGPTRTRRLE - GFP Tag - V

Restriction Sites: SgfI-RsrII



[View online »](#)

Cloning Scheme:



ACCN: NM_080825

ORF Size: 459 bp

OTI Disclaimer: The molecular sequence of this clone aligns with the gene accession number as a point of reference only. However, individual transcript sequences of the same gene can differ through naturally occurring variations (e.g. polymorphisms), each with its own valid existence. This clone is substantially in agreement with the reference, but a complete review of all prevailing variants is recommended prior to use. [More info](#)

OTI Annotation: This clone was engineered to express the complete ORF with an expression tag. Expression varies depending on the nature of the gene.

Components: The ORF clone is ion-exchange column purified and shipped in a 2D barcoded Matrix tube containing 10ug of transfection-ready, dried plasmid DNA (reconstitute with 100 ul of water).

Reconstitution Method:

1. Centrifuge at 5,000xg for 5min.
2. Carefully open the tube and add 100ul of sterile water to dissolve the DNA.
3. Close the tube and incubate for 10 minutes at room temperature.
4. Briefly vortex the tube and then do a quick spin (less than 5000xg) to concentrate the liquid at the bottom.
5. Store the suspended plasmid at -20°C. The DNA is stable for at least one year from date of shipping when stored at -20°C.

RefSeq: [NM_080825.4](#)

RefSeq Size: 586 bp

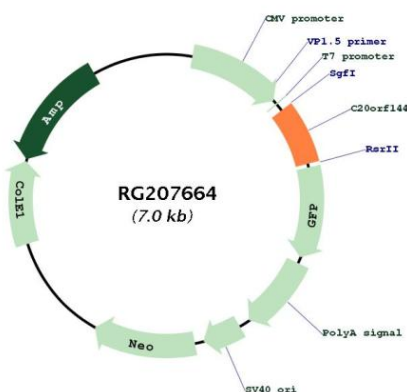
RefSeq ORF: 462 bp

Locus ID: 128864

UniProt ID: [Q9BQM9](#)

Cytogenetics: 20q11.22

Product images:



Circular map for RG207664