

Product datasheet for **RG207660**

FCRL1 (NM_052938) Human Tagged ORF Clone

Product data:

Product Type:	Expression Plasmids
Product Name:	FCRL1 (NM_052938) Human Tagged ORF Clone
Tag:	TurboGFP
Symbol:	FCRL1
Synonyms:	CD307a; FCRH1; IFGP1; IRTA5
Mammalian Cell Selection:	Neomycin
Vector:	pCMV6-AC-GFP (PS100010)
E. coli Selection:	Ampicillin (100 ug/mL)
ORF Nucleotide Sequence:	>RG207660 representing NM_052938 Red=Cloning site Blue=ORF Green=Tags(s)

TTTTGTAATACGACTCACTATAGGGCGGCCGGAATTCGTCGACTGGATCCGGTACCGAGGAGATCTGCCGCC**CGATCGCC**

ATGCTGCCGAGGCTGTTGCTGTTGATCTGTGCTCCACTCTGTGAACCTGCCGAGCTGTTTTGATAGCCA
GCCCTCCATCCCACAGAGGGGAGCCAGTGACCCTGACGTGTAAGATGCCCTTTCTACAGAGTTCAGA
TGCCAGTTCCAGTTCTGCTTTTCAGAGACACCCGGCCTTGGGCCAGGCTGGAGCAGCTCCCCAAG
CTCCAGATCGCTGCCATGTGAAAGAAGACACAGGGTCATACTGGTGCAGGCACAGACAATGGCGTCCA
AAGTCTTGAGGAGCAGGAGATCCAGATAAATGTGCACAGGGTCCCTGTCGCTGATGTGAGCTTGGAGAC
TCAGCCCCAGGAGGACAGGTGATGGAGGGAGACAGGCTGGTCCCTCATCTGCTCAGTTGCTATGGGCACA
GGAGACATCACCTTCTTTGGTACAAAGGGGCTGTAGGTTTAAACCTTCAGTCAAAGACCCAGCGTTTAC
TGACAGCAGAGTATGAGATTCTTCAGTGAGGGAGAGTGTGCTGAGCAATATTACTGTGTAGTGAAAA
TGGCTATGGTCCCAGCCCCAGTGGGCTGGTGGAGCATCACTGTGAGCAATCCCGGTGTCTCGCCCAATCCTC
ATGCTCAGGGCTCCCAGGGCCAGGCTGCAGTGGAGGATGTGCTGGAGCTTCACTGTGAGGCCCTGAGAG
GCTCTCCTCCGATCCTGTACTGGTTTTATCACGAGGATATCACCTGGGGAGCAGGTGGCCCCCTCTGG
AGGAGGAGCCTCCTTCAACCTTTCCCTGACTGAAGAACATTCTGGAACTACTCCTGTGAGGCCAACAAT
GGCCTGGGGCCAGCGCAGTGGGGGCTGACTCAACTTACAGTGCCTACTGGGCCAGAAGCAATC
ATCTTACCTCAGGAGTATTGAGGGCTGCTCAGCACCTTGGTCCAGCCACCGTGGCCTTATTATTTTG
CTACGGCCTCAAAAAGAAAATAGGAAGACGTTACGCCAGGGATCCACTCAGGAGCCTTCCAGCCCTCTA
CCCCAAGAGTTACCTACCTCAACTCACCTACCCAGGGCAGCTACAGCCTATATGAAAATGTGAATG
TTGTAAGTGGGGATGAGGTTTATTCACTGGCGTACTATAACCAGCCGGAGCAGGAATCAGTAGCAGCAGA
AACCTGGGGACACATATGGAGGACAAGGTTTCTTAGACATCTATTCCAGGCTGAGGAAAGCAACATT
ACAGATGTGGACTATGAAGATGCTATG

ACGCGTACGCGGCCGCTCGAG - GFP Tag - GTTTAA



[View online »](#)

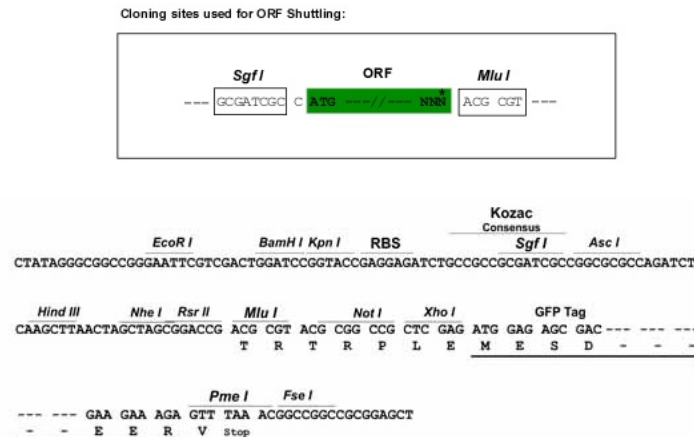
Protein Sequence: >RG207660 representing NM_052938
Red=Cloning site Green=Tags(s)

MLPRLLLLICAPLCEPAELFLIASPSHPTGSPVTLTCKMPFLQSSDAQFQFCFFRDTRALGPGWSSSPK
 LQIAAMWKEDTGSYWCEAQTMASKVLRSRRSQINVHRVPVADVLETQPPGGQVMEGDRLVLICSVAMGT
 GDITFLWYKGAVLNLQSKTQRSLTAEYEIPSVRESDAEQYYCAENGYGPPSPGLVSTIVRIPVSRPIL
 MLRAPRAQAAVEDVLELHCEALRGSPPILYWFYHEDITLGRSAPSAGGASFNLSLTEEHSNGNYSCEANN
 GLGAQRSEAVTLNFTVPTGARSNHLTSGVIEGLLSTLGPATVALLFCYGLKRKIGRRSARDPLRSLPSPL
 PQEFTYLNSPTPGQLQPIYENVNVVSGDEVYSLAYYNQPEQESVAAETLGTHTMEDKVSLEDIYSRLRKANI
 TDVDYEDAM

TRTRPLE – GFP Tag – V

Restriction Sites: SgfI-MluI

Cloning Scheme:



ACCN: NM_052938

ORF Size: 1287 bp

OTI Disclaimer: The molecular sequence of this clone aligns with the gene accession number as a point of reference only. However, individual transcript sequences of the same gene can differ through naturally occurring variations (e.g. polymorphisms), each with its own valid existence. This clone is substantially in agreement with the reference, but a complete review of all prevailing variants is recommended prior to use. [More info](#)

OTI Annotation: This clone was engineered to express the complete ORF with an expression tag. Expression varies depending on the nature of the gene.

Components: The ORF clone is ion-exchange column purified and shipped in a 2D barcoded Matrix tube containing 10ug of transfection-ready, dried plasmid DNA (reconstitute with 100 ul of water).

Reconstitution Method:

1. Centrifuge at 5,000xg for 5min.
2. Carefully open the tube and add 100ul of sterile water to dissolve the DNA.
3. Close the tube and incubate for 10 minutes at room temperature.
4. Briefly vortex the tube and then do a quick spin (less than 5000xg) to concentrate the liquid at the bottom.
5. Store the suspended plasmid at -20°C. The DNA is stable for at least one year from date of shipping when stored at -20°C.

RefSeq: [NM_052938.5](#)

RefSeq Size: 2627 bp

RefSeq ORF: 1290 bp

Locus ID: 115350

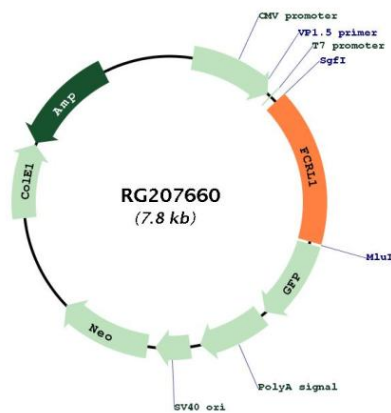
UniProt ID: [Q96LA6](#)

Cytogenetics: 1q23.1

Protein Families: Transmembrane

Gene Summary: This gene encodes a member of the immunoglobulin receptor superfamily and is one of several Fc receptor-like glycoproteins clustered on the long arm of chromosome 1. The encoded protein contains three extracellular C2-like immunoglobulin domains, a transmembrane domain and a cytoplasmic domain with two immunoreceptor-tyrosine activation motifs. This protein may play a role in the regulation of cancer cell growth. Alternative splicing results in multiple transcript variants. [provided by RefSeq, Apr 2009]

Product images:



Circular map for RG207660