

Product datasheet for **RG207654**

SRXN1 (NM_080725) Human Tagged ORF Clone

Product data:

Product Type: Expression Plasmids
Product Name: SRXN1 (NM_080725) Human Tagged ORF Clone
Tag: TurboGFP
Symbol: SRXN1
Synonyms: C20orf139; Npn3; SRX; SRX1
Mammalian Cell Selection: Neomycin
Vector: pCMV6-AC-GFP (PS100010)
E. coli Selection: Ampicillin (100 ug/mL)
ORF Nucleotide Sequence: >RG207654 representing NM_080725
Red=Cloning site **Blue**=ORF **Green**=Tags(s)

TTTTGTAATACGACTCACTATAGGGCGGCCGGAATTCGTCGACTGGATCCGGTACCGAGGAGATCTGCC
GCC**CGATCGCC**

ATGGGGCTGCGTGCAGGAGGAACGCTGGGCAGGGCCGGCGGGTGGGGGGCGCCGAGGGGCCGGGC
CGAGCGGGCGCGCAGGGCGGCAGCATCCACTCGGGCCGCATCGCCGCGGTGCACAACGTGCCGTGAG
CGTGCTCATCCGGCCGCTGCCGTCCGTGTTGGACCCGCCAAGGTGCAGAGCCTCGTGGACACGATCCGG
GAGGACCCAGACAGCGTGCCCCCATCGATGTCCTCTGGATCAAAGGGGCCAGGGAGGTGACTACTTCT
ACTCCTTTGGGGCTGCCACCGCTACGCGGCTACCAGCAACTGCAGCGAGAGACCATCCCGCCAAGCT
TGTCAGTCCACTCTCAGACCTAAGGGTGTACCTGGGAGCATCCACACAGACTTGACG

ACGCGTACGCGGCCGCTCGAG - GFP Tag - GTTTAA

Protein Sequence: >RG207654 representing NM_080725
Red=Cloning site **Green**=Tags(s)
MGLRAGGTLGRAGAGRGAPEGPSPGGAQGGSIHSGRIAAVHNVPLSVLIRPLPSVLDPAKVQSLVDTIR
EDPDSVPPIDVLWIKGAQGGDYFYSGGCHRYAAYQLQRETIPAKLVQSTLSDLRVYLGASTDPLQ

TRTRPLE - GFP Tag - V

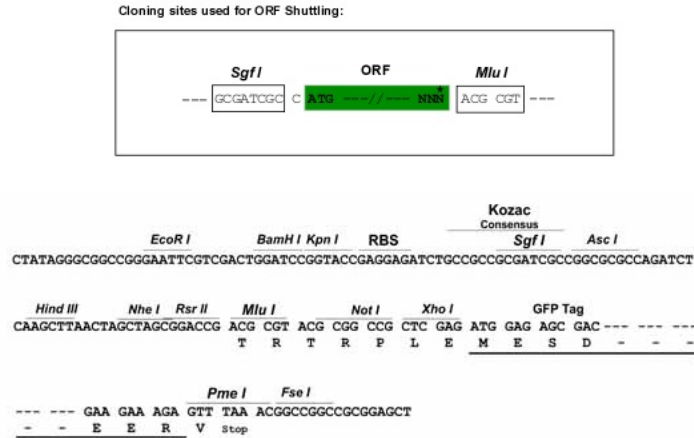
Chromatograms: https://cdn.origene.com/chromatograms/ja2362_e01.zip

Restriction Sites: SgfI-MluI



[View online »](#)

Cloning Scheme:



ACCN: NM_080725

ORF Size: 411 bp

OTI Disclaimer: Due to the inherent nature of this plasmid, standard methods to replicate additional amounts of DNA in E. coli are highly likely to result in mutations and/or rearrangements. Therefore, OriGene does not guarantee the capability to replicate this plasmid DNA. Additional amounts of DNA can be purchased from OriGene with batch-specific, full-sequence verification at a reduced cost. Please contact our customer care team at custsupport@origene.com or by calling 301.340.3188 option 3 for pricing and delivery.

The molecular sequence of this clone aligns with the gene accession number as a point of reference only. However, individual transcript sequences of the same gene can differ through naturally occurring variations (e.g. polymorphisms), each with its own valid existence. This clone is substantially in agreement with the reference, but a complete review of all prevailing variants is recommended prior to use. [More info](#)

OTI Annotation: This clone was engineered to express the complete ORF with an expression tag. Expression varies depending on the nature of the gene.

Components: The ORF clone is ion-exchange column purified and shipped in a 2D barcoded Matrix tube containing 10ug of transfection-ready, dried plasmid DNA (reconstitute with 100 ul of water).

Reconstitution Method:

1. Centrifuge at 5,000xg for 5min.
2. Carefully open the tube and add 100ul of sterile water to dissolve the DNA.
3. Close the tube and incubate for 10 minutes at room temperature.
4. Briefly vortex the tube and then do a quick spin (less than 5000xg) to concentrate the liquid at the bottom.
5. Store the suspended plasmid at -20°C. The DNA is stable for at least one year from date of shipping when stored at -20°C.

RefSeq: [NM_080725.3](#)

RefSeq Size: 2580 bp

RefSeq ORF: 414 bp

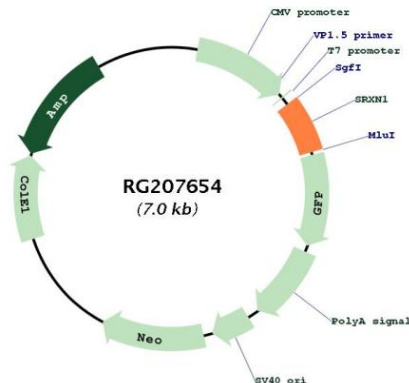
Locus ID: 140809

UniProt ID: [Q9BYN0](#)

Cytogenetics: 20p13

Gene Summary: Contributes to oxidative stress resistance by reducing cysteine-sulfinic acid formed under exposure to oxidants in the peroxiredoxins PRDX1, PRDX2, PRDX3 and PRDX4. Does not act on PRDX5 or PRDX6. May catalyze the reduction in a multi-step process by acting both as a specific phosphotransferase and a thioltransferase.[UniProtKB/Swiss-Prot Function]

Product images:



Circular map for RG207654