

Product datasheet for **RG207653**

TLK1 (NM_012290) Human Tagged ORF Clone

Product data:

Product Type:	Expression Plasmids
Product Name:	TLK1 (NM_012290) Human Tagged ORF Clone
Tag:	TurboGFP
Symbol:	TLK1
Synonyms:	PKU-beta
Mammalian Cell Selection:	Neomycin
Vector:	pCMV6-AC-GFP (PS100010)
E. coli Selection:	Ampicillin (100 ug/mL)



[View online »](#)

ORF Nucleotide
Sequence:

>RG207653 representing NM_012290
Red=Cloning site Blue=ORF Green=Tags(s)

TTTTGTAATACGACTCACTATAGGGCGGCCGGAATTCGTGACTGGATCCGGTACCGAGGAGATCTGCC
GCC**CGGATCGCC**

ATGAGTGTCCAAAGTAGCAGTGGAAAGTTTGGAGGGCCGCCATCTTGGTCCCAGCTCTCCACGTCTCCAA
CCCCGGGCTCGGCGGCGGCCAGGTCCTGCTGAATCACACGCGCCATCCGGGAGGCCAGGGAAGG
TGCAATGGATGAGCTTCATAGTCTGGATCCAAGAAGGCAAGAGTTATTGGAAGCTAGATTTACTGGAGTT
GCAAGTGGGAGCACTGGAAGTACGGCAGTTGCAGTGTGGAGCTAAAGCCTCAACAAATAACGAAAGCT
CTAATCACAGTTTTGGAAGCTTGGGATCTTTAAGTGACAAAGAATCAGAGACACCGGAGAAGAAACAATC
GGAATCATCCAGGGGAAGAAAGAGAAAAGCAGAAAACCAGAATGAAAGTAGTCAGGGAAGAAAGTATTGGG
GGACGTGGCCACAAAATTAGCGACTATTTGAATACCAGGGTGGAAATGGCTCAAGTCCAGTAAGAGGCA
TACCTCCTGCAATCCGTTCTCTCAAAAATTCACATTCACATTCCTCCTCCTCATCTGTTCCGACCGAA
TAGCCCTTCTCTACTGCATTAGCATTGGGGACCACCCTATTGTACAACCAAGCAATTATCCTTTAAA
ATTATTACAGACTGATCTACAATGCTGAAATTAGCAGCATTAGAAAGTAATAAAATCCAGGACCTGGAAA
AGAAGGAGGGACGTATAGATGATTTGCTCAGGGCTAACTGTGATCTCAGACGGCAATAGATGAACAACA
AAAATTACTTGAAAAATACAAAGAACGATTAATAAAGTGCATATCAATGAGCAAGAACTTCTTATTGAA
AAGAGTACACAAGAAAAGCTGTCAAGCAGAGAGAAGAGTATGCAAGATCGATTACGCCTTGGGCACTTTA
CAACAGTTAGACATGGCGCTTCATTTACTGAACAATGGACAGATGGTTTTGCATTTCAGAATCTTGTGAA
GCAACAAGAAATGGGTGAATCAGCAAAGGGAAGATATTGAAAGGCAAGGAAACTTCTAGCCAAACGCAAA
CCTCCCACAGCTAATAATTCTCAGGCACCCTCTACCAATTCTGAACCAAAACAAAGGAAAAACAAAGCAG
TCAATGGAGCAGAGAATGATCCCTTTGTTAGACCAAATTTACCACAATGTTGACTTTGGCAGAATATCA
TGAACAGGAAGAAATTTCAAACCTTAGACTAGGACATCTCAAAAAGGAAGAGGCAGAAATCCAGGCAGAA
CTTGAACGTTTGGAAAGAGTCAGAAATCTTACATACGTGAGCTGAAAAGAATAAACAATGAAGATAATT
CACAGTTCAAAGATCACCCAACATTAATGAAAGATATTTATTACTTCATCTGCTTGGTAGAGGTGGCTT
TAGTGAAGTGATAAGGCTTTTGACCTTTATGAACAAAGATATGCTGCTGTGAAGATACATCAGCTTAAT
AAAAGCTGGAGAGATGAGAAGAAAGAAACTACCACAAACATGCCTGCAGAGAGTATAGAATACACAAAG
AACTGGATCACCCAGAATAGTTAACTCTATGATTATTTCTCCTGGATACAGATACGTTTTGTACAGT
GTTAGAATACTGTGAAGGCAATGACTTGGATTTCTATCTGAAGCAACACAAGTTAATGTCAGAGAAAGAA
GCTCGGCTCTATTGTAATGCAGATTGTAATGCACTAAGATATCTCAATGAGATCAAACCCCTATTATAC
ATTATGATCTTAAGCCAGGAAACATCCTACTGGTAGATGGAACAGCATGTGGTGAATCAAATCACTGA
TTTTGGTCTGTCCAAGATTATGGATGATGATAGCTATGGTGTAGATGGAATGGATCTAACTCCCAGGGG
GCAGGCACTTACTGGTATTTACCTCCTGAGTGTGTTGTAGTTGGAAAAGAGCCACCAAAGATTTCCAACA
AGGTTGATGATGGTTCGGTTGGAGTCACTTTCTTTAGTGTCTTTATGGTAGAAAGCCATTTGGTCACAA
TCAATCTCAACAAGACATTTCTCAAGAAAATACAATATTAAGGACACAGAAAGTCCAGTTCCCTGTAAAA
CCGTTGTAAGCAGTGAAGCCAAGGCATTTATAAGACGCTGTTTGGCATATCGAAAAGAAGATCGATTTG
ATGTGCACCAGCTGGCAAATGACCCATACCTTCTCCCACATGAGAAGATCAAATCTTCAGGAAACCT
ACATATGGCTGGGCTGACAGCATCCCTACACCCCTTCTTCAAGCATAATTACTTAC

AG**CGGACCC**ACGCGTACGCGGCCGCTCGAG - GFP Tag - GTTTAA

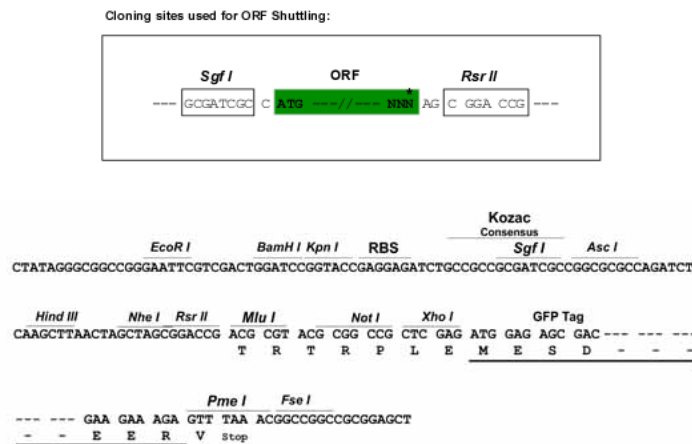
Protein Sequence: >RG207653 representing NM_012290
 Red=Cloning site Green=Tags(s)

```
MSVQSSSGSLEGPPSWSQLSTSPTPGSAAAARSLLNHTPPSGRPREGAMDELHSLDPRRQELLEARFTGV
ASGSTGSTGSCSVGAKASTNNNESSNHSGSLGSLSDKESETPEKKQSESSRGRKRKAENQNESSQKGSIG
GRGHKISDYFEYQGGNGSSPVRGIPPAIRSPQNSHSHSTPSSSVRPNSPPTALAFGDHPIVQPKQLSFK
IIQTDLTMLKLAALSNKIQDLEKKEGRIDDLRANCDLRRQIDEQQKLEKYKERLNKCSMSKLLIE
KSTQEKLSSREKSMQDRLRLGHFTTVRHGASFTEQWTDGFAFQNLVKQQEWVNQQREDIERQRKLLAKRK
PPTANNSQAPSTNSEPKQRKNKAVNGAENDPFVVRPNLPQLLTLAEYHEQEEIFKLRLGHLKKEEAEIQAE
LERLERVRNLHIRELKRINNEDNSQFKDHPTLNERYLLHLLGRGGFSEVYKAFDLYEQRYAAVKIHQLN
KSWRDEKKENYHKHACREYRIHKELDHPRIKLVYDYFLDQDTDFCTVLEYCEGNDLDFYKQHKLMSEKE
ARSIVMQIVNALRYLNEIKPPIIHYDLKPGNILLVDGTACGEIKITDFGLSKIMDDSYGVDGMDLTSQG
AGTYWYLPPECFVVGKEPPKISNKVDVWSVGVIFFOCLYGRKPFGHNQSQQDILQENTILKATEVQFPVK
PVVSSEAKAFIRRCLAYRKEDRFVHQLANDPYLLPHMRRSNSSGNLHMAGLTASPTPPSSSIITY
```

SGPTRRRLE - GFP Tag - V

Restriction Sites: SgfI-RsrII

Cloning Scheme:



ACCN: NM_012290

ORF Size: 2298 bp

OTI Disclaimer: The molecular sequence of this clone aligns with the gene accession number as a point of reference only. However, individual transcript sequences of the same gene can differ through naturally occurring variations (e.g. polymorphisms), each with its own valid existence. This clone is substantially in agreement with the reference, but a complete review of all prevailing variants is recommended prior to use. [More info](#)

OTI Annotation: This clone was engineered to express the complete ORF with an expression tag. Expression varies depending on the nature of the gene.

Components: The ORF clone is ion-exchange column purified and shipped in a 2D barcoded Matrix tube containing 10ug of transfection-ready, dried plasmid DNA (reconstitute with 100 ul of water).

Reconstitution Method:

1. Centrifuge at 5,000xg for 5min.
2. Carefully open the tube and add 100ul of sterile water to dissolve the DNA.
3. Close the tube and incubate for 10 minutes at room temperature.
4. Briefly vortex the tube and then do a quick spin (less than 5000xg) to concentrate the liquid at the bottom.
5. Store the suspended plasmid at -20°C. The DNA is stable for at least one year from date of shipping when stored at -20°C.

RefSeq: [NM_012290.3](#), [NP_036422.3](#)

RefSeq Size: 4071 bp

RefSeq ORF: 2301 bp

Locus ID: 9874

UniProt ID: [Q9UKI8](#)

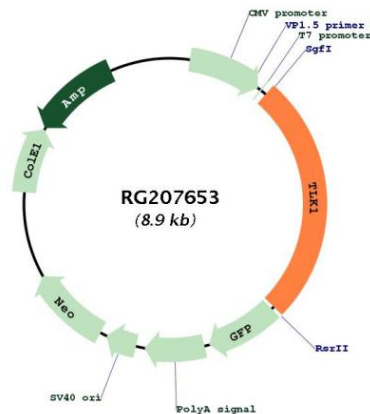
Cytogenetics: 2q31.1

Domains: pkinase, TyrKc, S_TKc

Protein Families: Druggable Genome, Protein Kinase

Gene Summary: The protein encoded by this gene is a serine/threonine kinase that may be involved in the regulation of chromatin assembly. The encoded protein is only active when it is phosphorylated, and this phosphorylation is cell cycle-dependent, with the maximal activity of this protein coming during S phase. The catalytic activity of this protein is diminished by DNA damage and by blockage of DNA replication. Three transcript variants encoding different isoforms have been found for this gene. [provided by RefSeq, Nov 2011]

Product images:



Circular map for RG207653