

Product datasheet for **RG207638**

DOLPP1 (NM_020438) Human Tagged ORF Clone

Product data:

Product Type: Expression Plasmids
Product Name: DOLPP1 (NM_020438) Human Tagged ORF Clone
Tag: TurboGFP
Symbol: DOLPP1
Synonyms: LSFR2
Mammalian Cell Selection: Neomycin
Vector: pCMV6-AC-GFP (PS100010)
E. coli Selection: Ampicillin (100 ug/mL)
ORF Nucleotide Sequence: >RG207638 representing NM_020438
Red=Cloning site Blue=ORF Green=Tags(s)

TTTTGTAATACGACTCACTATAGGGCGGCCGGAATTCGTCGACTGGATCCGGTACCGAGGAGATCTGCC
GCC**CGATCGCC**

ATGGCAGCGGACGGACAGTGCTCGCTCCCCGTTTCATGGCGGCCGGTGACCCTCACCCACGTGGAATATC
CTGCAGGTGATCTCTGGCCACCTCCTTGCTACCTGAGCCTCAGCCCTGATTTGTATCGTCGGTTT
CGTGACCCTCATCATATTTAAGCGGGAGCTGCACACGATCTCCTTCCTGGGGCCTGGCACTGAACGAG
GGGTCAACTGGCTGATCAAAAACGTATCCAGGAGCCACGGCCCTGTGGAGGCCCCACACAGCAGTGG
GCACCAAGTACGGGATGCCCTCCAGCCATCCAGTTTATGTGGTTCTTCTCCGCTATTCTTCTTTT
CCTGTATTTAAGAATGCACCAAACAACGCCAGGTTCTGGACTTGCTGTGGAGGCAGTGTCTCC
CTGGGACTCCTCGCTGTGGCCTTCTAGTCTCCTACAGCAGGGTCTACCTGCTGTACCACACCTGGAGCC
AGGTGCTCTATGGAGGCATCGCTGGAGGCTCATGGCCATCGCCTGGTTCATCTTACCCAGGAGTCTC
CACCCCGCTGTTCCCGAGGATAGCAGCCTGGCCTGTCTCCGAGTTCTTCTAATCCGAGACACAAGCCTC
ATTCCCAACGTA CTGGTTT GAGTACACGGTAACCCGGGCAGAAGCCAGGAACAGACAACGCAAGCTGG
GGACGAAACTGCAG

AG**CGGACCG**ACGCGTACGCGGCCGCTCGAG - GFP Tag - GTTTAA



[View online »](#)

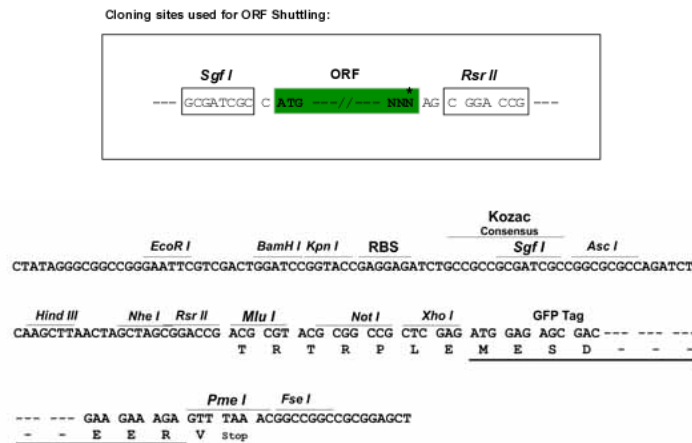
Protein Sequence: >RG207638 representing NM_020438
Red=Cloning site Green=Tags(s)

MAADGQCSLPASWRPVTLTHVEYPAGDLSGHLLAYLSLSPVFVIVGFVTLIIIFKRELHTISFLGGLALNE
 GVNWLIKNVIQEPRPCGGPHTAVGTKYGMPPSSHSQFMWFFSVYSFLFLYLRMHQTNARFLDLLWRHVLS
 LGLLAVAFVLSYSRVYLLYHTWSQVLYGGIAGGLMAIAWFIFTQEVLTPLFPRIAAMPVSEFFLIRDTSL
 IPNVLWFEYTVTRAEARNRQRKLGTKLQ

SGPTRRRLE - GFP Tag - V

Restriction Sites: SgfI-RsrII

Cloning Scheme:



ACCN: NM_020438

ORF Size: 714 bp

OTI Disclaimer: The molecular sequence of this clone aligns with the gene accession number as a point of reference only. However, individual transcript sequences of the same gene can differ through naturally occurring variations (e.g. polymorphisms), each with its own valid existence. This clone is substantially in agreement with the reference, but a complete review of all prevailing variants is recommended prior to use. [More info](#)

OTI Annotation: This clone was engineered to express the complete ORF with an expression tag. Expression varies depending on the nature of the gene.

Components: The ORF clone is ion-exchange column purified and shipped in a 2D barcoded Matrix tube containing 10ug of transfection-ready, dried plasmid DNA (reconstitute with 100 ul of water).

Reconstitution Method:

1. Centrifuge at 5,000xg for 5min.
2. Carefully open the tube and add 100ul of sterile water to dissolve the DNA.
3. Close the tube and incubate for 10 minutes at room temperature.
4. Briefly vortex the tube and then do a quick spin (less than 5000xg) to concentrate the liquid at the bottom.
5. Store the suspended plasmid at -20°C. The DNA is stable for at least one year from date of shipping when stored at -20°C.

RefSeq: [NM_020438.5](#)

RefSeq Size: 2203 bp

RefSeq ORF: 717 bp

Locus ID: 57171

UniProt ID: [Q86YN1](#)

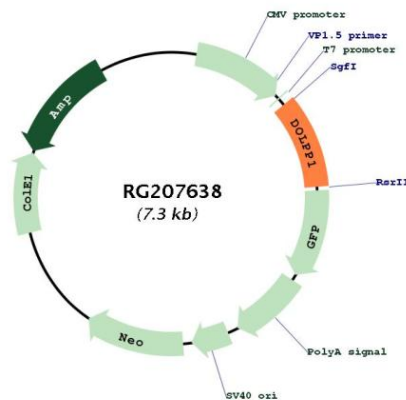
Cytogenetics: 9q34.11

Protein Families: Druggable Genome, Transmembrane

Protein Pathways: N-Glycan biosynthesis

Gene Summary: A similar gene has been characterized in mice and encodes dolichyl pyrophosphate (Dol-P-P) phosphatase. This protein dephosphorylates dolichyl pyrophosphate so that it may be re-utilized as a glycosyl carrier lipid by the oligosaccharyltransferase multisubunit complex in the ER. Alternative splicing results in multiple transcript variants and protein isoforms. [provided by RefSeq, Jun 2012]

Product images:



Circular map for RG207638