

Product datasheet for **RG207624**

CHRNA5 (NM_000745) Human Tagged ORF Clone

Product data:

Product Type:	Expression Plasmids
Product Name:	CHRNA5 (NM_000745) Human Tagged ORF Clone
Tag:	TurboGFP
Symbol:	CHRNA5
Synonyms:	LNCR2
Mammalian Cell Selection:	Neomycin
Vector:	pCMV6-AC-GFP (PS100010)
E. coli Selection:	Ampicillin (100 ug/mL)



[View online »](#)

ORF Nucleotide Sequence:

>RG207624 representing NM_000745
 Red=Cloning site Blue=ORF Green=Tags(s)

TTTTGTAATACGACTCACTATAGGGCGGCCGGGAATTCGTCGACTGGATCCGGTACCGAGGAGATCTGCC
 GCC**CGGATCGCC**

ATGGCGGCGCGGGGGTCAGGGCCCCGCGCGCTCCGCTGTGCTCTTGGTCCAGCTGGTCGCGGGGCGCT
 GCGGTCTAGCGGGCGCGCGGGCGCGCAGAGAGGATTATCTGAACCTTCTTCTATTGCAAAACATGA
 AGATAGTTTGCTTAAGGATTTATTTCAAGACTACGAAAGATGGGTTCGTCTGTGGAACACCTGAATGAC
 AAAATAAAAAATAAAATTTGGACTTGCAATATCTCAATTGGTGGATGTGGATGAGAAAAATCAGTTAATGA
 CAACAAACGTCTGGTTGAAACAGGAATGGATAGATGTAAAATTAAGATGGAACCCGTATGACTATGGTGG
 AATAAAAGTTATACGTGTTCTTCAGACTCTGTCTGGACACCAGACATCGTTTTTGTGATAATGCAGAT
 GGACGTTTTGAAGGGACCAGTACGAAAACAGTCATCAGGTACAATGGCACTGTACCTGGACTCCACCGG
 CAAACTACAAAAGTTCCGTACCATAGATGTCACGTTTTTCCCATTTGACCTTCAGAAGTGTCCATGAA
 ATTTGGTCTTGGACTTATGATGGATCACAGTTGATATAATTCTAGAGGACCAAGATGTAGACAAGAGA
 GATTTTTTTGATAATGGAGAATGGGAGATTGTGAGTGCAACAGGGAGCAAAGGAAACAGAACCGACAGCT
 GTTGCTGGTATCCGTATGCACTTACTCATTTGTAATCAAGCGCCTGCCTCTCTTTTATACCTTGTTCCT
 TATAATACCCTGTATTGGGCTCTCATTTTTAACTGTACTTGTCTTCTATCTTCTTCAAATGAAGGTGAA
 AAGATTTGTCTCTGCACTTCAGTACTTGTGCTTTGACTGTCTTCTTCTGGTTATTGAAGAGATCATAC
 CATCATCTTCAAAGTCATACCTCTAATGGAGAGTATCTGGTATTTACCATGATTTTTGTGACTGTG
 AATTATGGTAACCGTCTTCGCTATCAACATTCATCATCGTTCTTCTCAACACATAATGCCATGGCGCCT
 TTGGTCCGCAAGATATTTCTTACACGCTTCCCAAAGTCTTGCATGAGAAGTCATGTAGACAGGTACT
 TCACTCAGAAAGAGGAAACTGAGAGTGGTGTGGACCAAAATCTCTAGAAACACATTGGAAGTCCGCT
 CGATTCTATTCGCTACATTACAAGACACATCATGAAGGAAAATGATGTCGGTGAGGTTGTTGAAGATTGG
 AAATTCATAGCCAGGTTCTTGATCGGATGTTTCTGTGGACTTTTCTTTTCGTTTCAATTGTTGGATCTC
 TTGGGCTTTTTGTCTGTTATTTATAAATGGGCAAAATATTAATACCAGTTCATATTGAAATGCAAA
 TAAG

AG**CGGACCG**ACGCGTACGCGGCCGCTCGAG – GFP Tag – GTTTAA

Protein Sequence:

>RG207624 representing NM_000745
 Red=Cloning site Green=Tags(s)

MAARGSGPRALRLLLLVQLVAGRCGLAGAAGGAQRGLSEPSSIAKHEDSLLKDLFQDYERWVRPVEHLND
 KIKIKFGLAISQLVDVDEKNQLMTTNVWLKQEWIDVKLRWNPDDYGGIKVIRVPSDSVWTPDIVLFDNAD
 GRFEGTSTKTIVIRYNGVTWTPPPANYKSSCTIDVTFPPFDLQNCMSMKFGSWTYDGSQVDIILEDQDVDR
 DFFDNGEWEIVSATGSKGNRTDSCWYPVVTYSFVIKRLPLFYTLFLIIPCIGLSFLTTLVLYLPSNEGE
 KICLCTSVLVSLTVFLLVIEEIIIPSSKVIPLIGEYLVFTMIFVTLSIMVTVFAINIHRSSSTHNAMAP
 LVRKIFLHTLPKLLCMRSHVDRYFTQKEETESGSGPKSSRNTLEAALDSIRYITRHKENDVREVVEDW
 KFIQVLDRLMFLWTLFVSVIVGSLGLFVPIYKWANILIPVHIGNANK

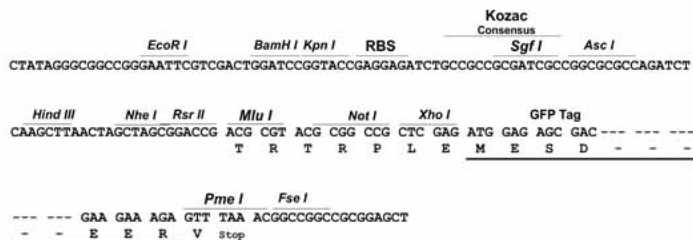
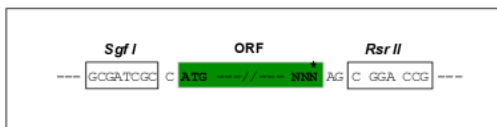
SGP**TRRRLE** – GFP Tag – V

Restriction Sites:

Sgfl-RsrII

Cloning Scheme:

Cloning sites used for ORF Shuttling:


ACCN: NM_000745

ORF Size: 1404 bp

OTI Disclaimer: The molecular sequence of this clone aligns with the gene accession number as a point of reference only. However, individual transcript sequences of the same gene can differ through naturally occurring variations (e.g. polymorphisms), each with its own valid existence. This clone is substantially in agreement with the reference, but a complete review of all prevailing variants is recommended prior to use. [More info](#)

OTI Annotation: This clone was engineered to express the complete ORF with an expression tag. Expression varies depending on the nature of the gene.

Components: The ORF clone is ion-exchange column purified and shipped in a 2D barcoded Matrix tube containing 10ug of transfection-ready, dried plasmid DNA (reconstitute with 100 ul of water).

Reconstitution Method:

1. Centrifuge at 5,000xg for 5min.
2. Carefully open the tube and add 100ul of sterile water to dissolve the DNA.
3. Close the tube and incubate for 10 minutes at room temperature.
4. Briefly vortex the tube and then do a quick spin (less than 5000xg) to concentrate the liquid at the bottom.
5. Store the suspended plasmid at -20°C. The DNA is stable for at least one year from date of shipping when stored at -20°C.

RefSeq: [NM_000745.3](#)
RefSeq Size: 2468 bp

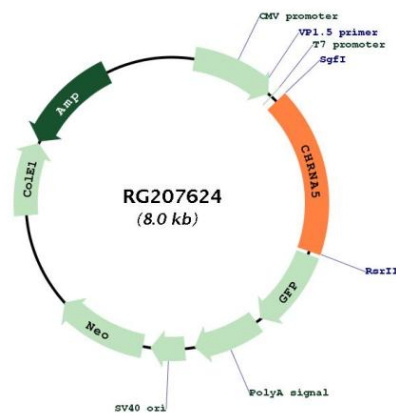
RefSeq ORF: 1407 bp

Locus ID: 1138

UniProt ID: [P30532](#)

Cytogenetics:	15q25.1
Domains:	Neur_chan_memb, Neur_chan_LBD
Protein Families:	Druggable Genome, Ion Channels: Cys-loop Receptors, Transmembrane
Gene Summary:	The protein encoded by this gene is a nicotinic acetylcholine receptor subunit and a member of a superfamily of ligand-gated ion channels that mediate fast signal transmission at synapses. These receptors are thought to be heteropentamers composed of separate but similar subunits. Defects in this gene have been linked to susceptibility to lung cancer type 2 (LNCR2).[provided by RefSeq, Jun 2010]

Product images:



Circular map for RG207624