

## Product datasheet for **RG207618**

### LSAMP (NM\_002338) Human Tagged ORF Clone

#### Product data:

Product Type:	Expression Plasmids
Product Name:	LSAMP (NM_002338) Human Tagged ORF Clone
Tag:	TurboGFP
Symbol:	LSAMP
Synonyms:	IGLON3; LAMP
Mammalian Cell Selection:	Neomycin
Vector:	pCMV6-AC-GFP (PS100010)
E. coli Selection:	Ampicillin (100 ug/mL)
ORF Nucleotide Sequence:	>RG207618 representing NM_002338 Red=Cloning site Blue=ORF Green=Tags(s)

TTTTGTAATACGACTCACTATAGGGCGGCCGGAATTCGTCGACTGGATCCGGTACCGAGGAGATCTGCC  
GCC**CGATCGCC**

ATGGTCAGGAGAGTTCAGCCGGATCGGAAACAGTTGCCACTGGTCTACTGAGATTGCTCTGCCTTCTTC  
CCACAGGACTGCCTGTTTCGACGCTGGATTTAAACCGAGGCACGGACAACATCACCGTGAGGCAGGGGGA  
CACAGCCATCCTCAGGTGCGTTGTAGAAGACAAGAAGCTCAAAGGTGGCCTGGTTGAACCGTTCTGGCATC  
ATTTTTGCTGGACATGACAAGTGGTCTCTGGACCCACGGGTTGAGCTGGAGAAACGCCATTCTCTGGAAT  
ACAGCCTCCGAATCCAGAAGGTGGATGTCTATGATGAGGGTTCCTACACTGCTCAGTTCAGACACAGCA  
TGAGCCCAAGACCTCCCAAGTTTACTTGATCGTACAAGTCCCACCAAGATCTCCAATATCTCCTCGGAT  
GTCACTGTGAATGAGGGCAGCAACGTGACTCTGGTCTGCATGGCCAATGGCCGCTCTGAACCTGTTATCA  
CCTGGAGACACCTTACACCAACTGGAAGGGAATTTGAAGGAGAAGAAGATATCTGGAGATCCTTGGCAT  
CACCAGGGAGCAGTCAGGCAAAATGAGTGCAAAGCTGCCAACGAGGTCTCCTCGCGGATGTCAAACAA  
GTCAAGGTCACTGTGAATATCCTCCCACTATCACAGAATCCAAGAGCAATGAAGCCACCACAGGACGAC  
AAGCTTCACTCAAATGTGAGGCCTCGGCAGTGCCTGCACCTGACTTTGAGTGGTACCGGGATGACACTAG  
GATAAATAGTGCCAATGGCCTTGAGATTAAGAGCACGGAGGGCCAGTCTCCCTGACGGTGACCAACGTC  
ACTGAGGAGCACTACGGCAACTACACCTGTGTGGCTGCCAACAAGCTGGGGGTACCAATGCCAGCCTAG  
TCCTTTTCAGACCTGGTTCGGTGAGAGGAATAAATGGATCCATCAGTCTGGCCGTACCACTGTGGCTGCT  
GGCAGCATCTCTGCTCTGCCTTCTCAGCAAATGT

**ACGCGT**ACGCGGCCGCTCGAG - GFP Tag - GTTTAA



[View online »](#)

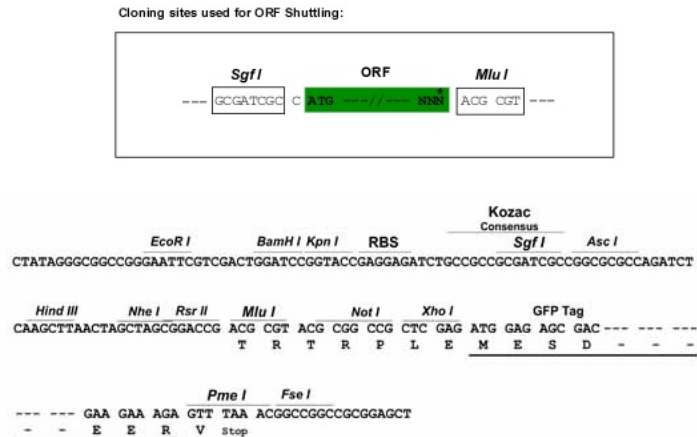
**Protein Sequence:** >RG207618 representing NM\_002338  
Red=Cloning site Green=Tags(s)

MVRRVQPDRKQLPLVLLRLLCCLLPTGLPVRSVDFNRTDNITVRQGDTAILRCVVEDKNSKVAWLNRSGL  
 IFAGHDKWLDPRVELEKRHSLEYSRLIQKVDVYDEGSYTCVSVQTHPEPKTSQVYLIVQVPPKISNISD  
 VTVNEGSNVTLCMANGRPEPVITWRHLTPTGREFEGEEEEYLEILGITREQSGKYECKAANEVSSADVQK  
 VKVTVNYPPPTITESKSNEATTGRQASLKCEASAVPAPDFEWYRDDTRINSANGLEIKSTEGQSSLTVTNV  
 TEEHYGNYTCVAANKLGVTNASLVLFRPGSVRGINSGISLAVPLWLLAASLLCCLLSKC

TRTRPLE - GFP Tag - V

**Restriction Sites:** SgfI-MluI

**Cloning Scheme:**



**ACCN:** NM\_002338

**ORF Size:** 1014 bp

**OTI Disclaimer:** The molecular sequence of this clone aligns with the gene accession number as a point of reference only. However, individual transcript sequences of the same gene can differ through naturally occurring variations (e.g. polymorphisms), each with its own valid existence. This clone is substantially in agreement with the reference, but a complete review of all prevailing variants is recommended prior to use. [More info](#)

**OTI Annotation:** This clone was engineered to express the complete ORF with an expression tag. Expression varies depending on the nature of the gene.

**Components:** The ORF clone is ion-exchange column purified and shipped in a 2D barcoded Matrix tube containing 10ug of transfection-ready, dried plasmid DNA (reconstitute with 100 ul of water).

**Reconstitution Method:**

1. Centrifuge at 5,000xg for 5min.
2. Carefully open the tube and add 100ul of sterile water to dissolve the DNA.
3. Close the tube and incubate for 10 minutes at room temperature.
4. Briefly vortex the tube and then do a quick spin (less than 5000xg) to concentrate the liquid at the bottom.
5. Store the suspended plasmid at -20°C. The DNA is stable for at least one year from date of shipping when stored at -20°C.

**RefSeq:** [NM\\_002338.5](#)

**RefSeq Size:** 1640 bp

**RefSeq ORF:** 1017 bp

**Locus ID:** 4045

**UniProt ID:** [Q13449](#)

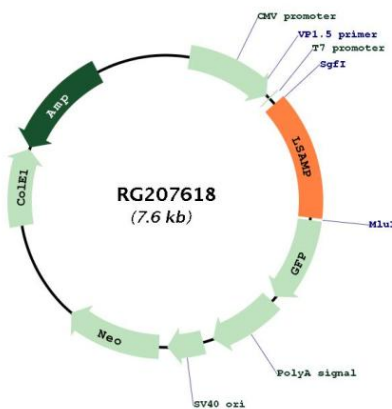
**Cytogenetics:** 3q13.31

**Domains:** ig, IGc2, IG

**Protein Families:** Transmembrane

**Gene Summary:** This gene encodes a member of the immunoglobulin LAMP, OBCAM and neurotrimin (IgLON) family of proteins. The encoded preproprotein is proteolytically processed to generate a neuronal surface glycoprotein. This protein may act as a selective homophilic adhesion molecule during axon guidance and neuronal growth in the developing limbic system. The encoded protein may also function as a tumor suppressor and may play a role in neuropsychiatric disorders. Alternative splicing results in multiple transcript variants, at least one of which encodes a preproprotein that is proteolytically processed. [provided by RefSeq, Jan 2016]

## Product images:



Circular map for RG207618