

Product datasheet for **RG207617**

Leukotriene A4 hydrolase (LTA4H) (NM_000895) Human Tagged ORF Clone

Product data:

Product Type:	Expression Plasmids
Product Name:	Leukotriene A4 hydrolase (LTA4H) (NM_000895) Human Tagged ORF Clone
Tag:	TurboGFP
Symbol:	Leukotriene A4 hydrolase
Mammalian Cell Selection:	Neomycin
Vector:	pCMV6-AC-GFP (PS100010)
E. coli Selection:	Ampicillin (100 ug/mL)



[View online »](#)

ORF Nucleotide Sequence:

>RG207617 representing NM_000895
 Red=Cloning site Blue=ORF Green=Tags(s)

TTTTGTAATACGACTCACTATAGGGCGGCCGGAATTCGTCGACTGGATCCGGTACCGAGGAGATCTGCC
 GCC**CGCATCGCC**

ATGCCCGAGATAGTGGATACCTGTTGCTTGGCCTCTCCGGCTTCGTCTGCCGACCAAGCACCTGCACC
 TGCCTGCAGCGTCGACTTTACTCGCCGACGCTGACCGGACTGCTGCTCTCACGGTCCAGTCTCAGGA
 GGACAATCTGCGCAGCCTGGTTTTGGATACAAAGGACCTTACAATAGAAAAAGTAGTGATCAATGGACAA
 GAAGTCAAATATGCTCTTGGAGAAAGACAAAGTTACAAGGGATCGCCAATGGAATCTCTCTTCTATCG
 CTTTGAGCAAAAATCAAGAAATTGTTATAGAAATTTCTTTGAGACCTCTCCAAAATCTTCTGCTCTCCA
 GTGGCTCACTCCTGAACAGACTTCTGGGAAGGAACACCCATATCTCTTTAGTCAGTGCCAGGCCATCCAC
 TGCAGAGCAATCCTTCTGTGAGGACTCCTTCTGTGAAATTAACCTATACTGCAGAGGTGTCTGTCC
 CTAAGAAGTGGTGGCACTTATGAGTGCTATTCGTGATGGAGAAACACCTGACCCAGAAGACCCAAGCAG
 GAAAATATACAAATTCATCCAAAAGTTCCAATACCCTGTACCTGATTGCTTTAGTTGTTGGAGCTTTA
 GAAAGCAGGCAAATTTGGCCCAAGAACTTTGGTGTGGTCTGAGAAAAGAGCAGGTGGAAAAGTCTGCTTATG
 AGTTTTCTGAGACTGAATCTATGCTTAAAAATAGCAGAAGATCTGGGAGGACCGTATGTATGGGGACAGTA
 TGACCTATTGGTCTGCCACCATCCTTCCCTTATGGTGGCATGGAGAATCCTTGCCTTACTTTTGTAACT
 CCTACTCTACTGGCAGGCGACAAGTCACTCTCCAATGTCATTGCACATGAAAATATCTCATAGCTGGACAG
 GGAATCTAGTGACCAACAAAACCTGGGATCACTTTTGGTTAAATGAGGGACATACTGTGTACTTGGAAACG
 CCACATTTGCGGACGATTGTTTGGTGAAGGTTACAGACATTTTAAATGCTCTGGGAGGATGGGAGAACTA
 CAGAATTCGGTAAAGACATTTGGGAGACACATCCTTTACCAAACTGTGGTTGATCTGACAGATATAG
 ACCCTGATGTAGCTTATCTTCAGTCCCTATGAGAAGGCTTTGCTTTACTTTTTTACCTTGAACACT
 GCTTGGAGGACAGAGATTTTCTAGGATCTTAAAAGCTTATGTTGAGAAGTTTTCTATAAGAGCATA
 ACTACTGATGACTGGAAGGATTTCTGTATTCTATTTTAAAGATAAGGTTGATGTTCTCAATCAAGTTG
 ATTGGAATGCCTGGCTCTACTCTCTGGACTGCCTCCATAAAGCCCAATTATGATATGACTCTGACAAA
 TGCTTGTATTGCCTAAGTCAAAGATGGATTACTGCCAAAGAAGATGATTTAAATTCATTCAATGCCACA
 GACCTGAAGGATCTCTTCTCATCAATTGAATGAGTTTTAGCACAGACGCTCCAGAGGACACCTCTTC
 CATTGGGGCACATAAAGCGAATGCAAGAGGTGTACAACCTCAATGCCATTAACAATCTGAAATACGATT
 CAGATGGCTCGGCTCTGCATTCAATCCAAGTGGGAGGACGCAATCCTTTGGCGCTAAAGATGGCAACT
 GAACAAGGAAGAATGAAGTTTACCCTGGCCCTTATCAAGGATCTTCTGCTGCTTTGACAAAATCCCATGATC
 AAGCTGTCCGAACCTACCAAGAGCACAAGCAAGCATGCATCCCGTGACTGCAATGCTGGTGGGAAAGA
 CTTAAAAGTGGAT

ACGCGTACGCGGCCGCTCGAG – GFP Tag – GTTTAA

Protein Sequence:

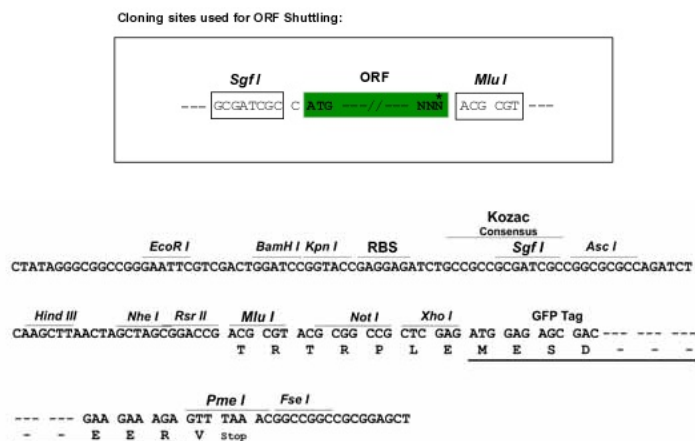
>RG207617 representing NM_000895
 Red=Cloning site Green=Tags(s)

MPEIVDTCSLASPASVCRKHLHLRCSVDFTRRTLGTAAALTQSQEDNLRSLVLDTKDLTIEKVVINGQ
 EVKYALGERQSYKSPMEISLPIALSKNQEIVIEISFETSPKSSALQWLTPQTSKGEHPYLFSSQCAIH
 CRAILPCQDTPSVKLYTAEVSVKELVALMSAIRDGETPDPEDPSRKIYKFIQKVPICPYLIALVVGAL
 ESRQIGPRTLWSEKEQVEKSAYEFSETESMLKIAEDLGGPYVWQYDILLVPPSFPYGGMENPCLTFVT
 PTLLAGDKSLSNVIAHEISHSWTGNLVTNKTWDHFWLNEGHTVYLERHICGRLFGEKFRHFNALGGWEL
 QNSVKTFGETHPFTKLVDLTDIDPDVAYSSVPYEKGFALLFYLEQLLGGPEIFLGLKAYVEKFSYKSI
 TTDDWKDFLYSYFKDKVDVNLNQVDWNALWYSPGLPIKPNYDMTLTNACIALSQRWITAKEDDLNSFNAT
 DLKDLSSHQLNEFLAQTQRAPLPLGHIKRMQEVYVNFNAINNSEIRFRWLRLCIQSKWEDAIPLALKMAT
 EQGRMKFTRPLFKDLAAFDKSHDQAVRITYQEHKASMPVTAMLVGDLDKVD

TRTRPLE – GFP Tag – V

Restriction Sites:

SgfI-MluI

Cloning Scheme:


ACCN: NM_000895

ORF Size: 1833 bp

OTI Disclaimer: The molecular sequence of this clone aligns with the gene accession number as a point of reference only. However, individual transcript sequences of the same gene can differ through naturally occurring variations (e.g. polymorphisms), each with its own valid existence. This clone is substantially in agreement with the reference, but a complete review of all prevailing variants is recommended prior to use. [More info](#)

OTI Annotation: This clone was engineered to express the complete ORF with an expression tag. Expression varies depending on the nature of the gene.

Components: The ORF clone is ion-exchange column purified and shipped in a 2D barcoded Matrix tube containing 10ug of transfection-ready, dried plasmid DNA (reconstitute with 100 ul of water).

Reconstitution Method:

1. Centrifuge at 5,000xg for 5min.
2. Carefully open the tube and add 100ul of sterile water to dissolve the DNA.
3. Close the tube and incubate for 10 minutes at room temperature.
4. Briefly vortex the tube and then do a quick spin (less than 5000xg) to concentrate the liquid at the bottom.
5. Store the suspended plasmid at -20°C. The DNA is stable for at least one year from date of shipping when stored at -20°C.

RefSeq: [NM_000895.3](#)

RefSeq Size: 2060 bp

RefSeq ORF: 1836 bp

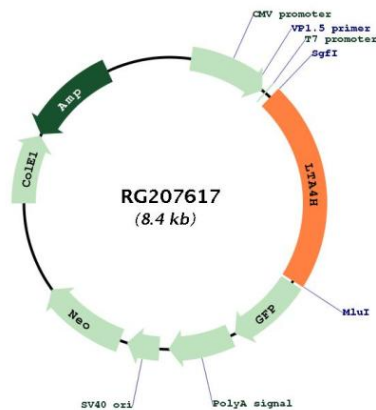
Locus ID: 4048

UniProt ID: [P09960](#)

Cytogenetics: 12q23.1

Domains:	Peptidase_M1
Protein Families:	Druggable Genome, Protease
Protein Pathways:	Arachidonic acid metabolism, Metabolic pathways
Gene Summary:	The protein encoded by this gene is an enzyme that contains both hydrolase and aminopeptidase activities. The hydrolase activity is used in the final step of the biosynthesis of leukotriene B4, a proinflammatory mediator. The aminopeptidase activity has been shown to degrade proline-glycine-proline (PGP), a neutrophil chemoattractant and biomarker for chronic obstructive pulmonary disease (COPD). Several transcript variants encoding different isoforms have been found for this gene. [provided by RefSeq, Sep 2015]

Product images:



Circular map for RG207617