

Product datasheet for **RG207603**

SNRPB2 (NM_198220) Human Tagged ORF Clone

Product data:

| | |
|---------------------------|---|
| Product Type: | Expression Plasmids |
| Product Name: | SNRPB2 (NM_198220) Human Tagged ORF Clone |
| Tag: | TurboGFP |
| Symbol: | SNRPB2 |
| Synonyms: | Msl1; U2B' |
| Mammalian Cell Selection: | Neomycin |
| Vector: | pCMV6-AC-GFP (PS100010) |
| E. coli Selection: | Ampicillin (100 ug/mL) |
| ORF Nucleotide Sequence: | >RG207603 representing NM_198220 Red=Cloning site Blue=ORF Green=Tags(s) |

TTTTGTAATACGACTCACTATAGGGCGCCGGAATTCGTCGACTGGATCCGGTACCGAGGAGATCTGCC
GCC**CGATCGCC**

ATGGATATCAGACCAAATCATAAATTTATCAACAATATGAATGACAAAATTTAAAGGAAGAATTGA
AGAGATCCCTATATGCCCTGTTTTCTCAGTTTGGTCATGTGGTGGACATTGTGGCTTTAAAGACCATGAA
GATGAGGGGGCAGGCCTTTGTCAATTTAAGGAACTGGGCTCATCCAAAATGCCTTGAGACAGCTACAA
GGATTTCCATTTTATGGTAAACCAATGCGAATACAGTATGAAAAACAGATTCGGATATAATATCAAAAA
TGGCTGGAACCTTTGCTGACAAAAGAAAAGAAAAAGAAAAGAAAAGCCAAAACCTGTGGAACAGACTGC
AACCAACCACAAAACAAAAGCCTGGCCAGGGAATCCAAAATTCAGCTAATACCCAAGGAAATTC AACACCA
AATCCTCAGGTCCCTGATTACCCTCCAACTATATTTTATTCCTTAATAACTTACCAGAAGAGACTAATG
AGATGATGTTATCCATGCTGTTAATCAGTTCCCTGGCTCAAGGAAGTACGTCTGGTACCAGGGAGGCA
TGACATTGCTTTTGTGAATTTGAAAAATGATGGGCAGGCTGGAGCTGCCAGGGATGCTTTACAGGGATTT
AAGATCACACCGTCCCATGCTATGAAGTACCTATGCCAAGAAA

ACGCGTACGCGGGCCGCTCGAG - GFP Tag - GTTTAA



[View online »](#)

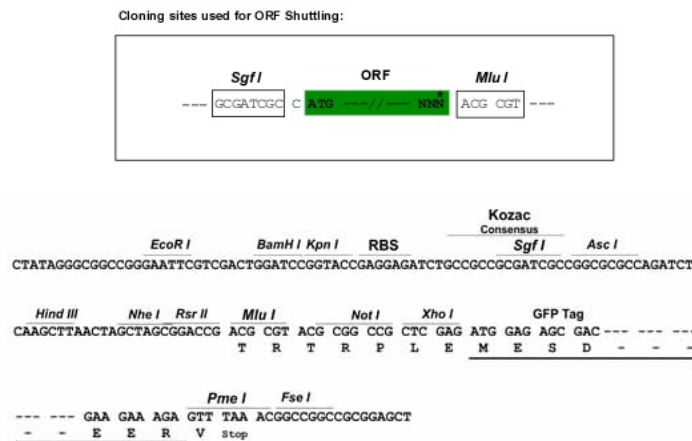
Protein Sequence: >RG207603 representing NM_198220
 Red=Cloning site Green=Tags(s)

MDIRPNHTIYINNMDKIKKEELKRSLYALFSQFGHVVDIVALKTMKMRGQAFVIFKELGSSTNALRQLQ
 GFPPFYGKPMRIQYAKTDSDIISKMRGTFADKEKKKAKTVEQTATTTNKKPGQGTGPSANTQGNSTP
 NPQVPDYPPNYILFLNLLPEETNEMMLSMFLFNQFPGFKEVRLVGRHDIAFVEFENDGQAGAARDALQGF
 KITPSHAMKITYAKK

TRTRPLE - GFP Tag - V

Restriction Sites: SgfI-MluI

Cloning Scheme:



ACCN: NM_198220

ORF Size: 675 bp

OTI Disclaimer: The molecular sequence of this clone aligns with the gene accession number as a point of reference only. However, individual transcript sequences of the same gene can differ through naturally occurring variations (e.g. polymorphisms), each with its own valid existence. This clone is substantially in agreement with the reference, but a complete review of all prevailing variants is recommended prior to use. [More info](#)

OTI Annotation: This clone was engineered to express the complete ORF with an expression tag. Expression varies depending on the nature of the gene.

Components: The ORF clone is ion-exchange column purified and shipped in a 2D barcoded Matrix tube containing 10ug of transfection-ready, dried plasmid DNA (reconstitute with 100 ul of water).

Reconstitution Method:

1. Centrifuge at 5,000xg for 5min.
2. Carefully open the tube and add 100ul of sterile water to dissolve the DNA.
3. Close the tube and incubate for 10 minutes at room temperature.
4. Briefly vortex the tube and then do a quick spin (less than 5000xg) to concentrate the liquid at the bottom.
5. Store the suspended plasmid at -20°C. The DNA is stable for at least one year from date of shipping when stored at -20°C.

RefSeq: [NM_198220.3](#)

RefSeq Size: 1181 bp

RefSeq ORF: 678 bp

Locus ID: 6629

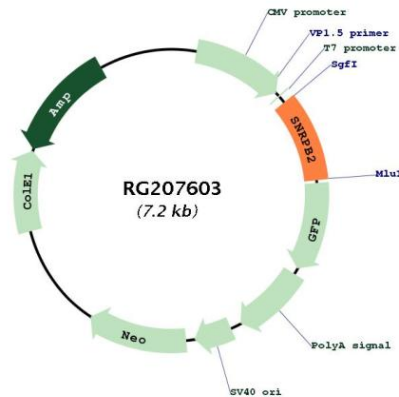
UniProt ID: [P08579](#)

Cytogenetics: 20p12.1

Protein Pathways: Spliceosome

Gene Summary: The protein encoded by this gene associates with stem loop IV of U2 small nuclear ribonucleoprotein (U2 snRNP) in the presence of snRNP-A'. The encoded protein may play a role in pre-mRNA splicing. Autoantibodies from patients with systemic lupus erythematosus frequently recognize epitopes on the encoded protein. Two transcript variants encoding the same protein have been found for this gene. [provided by RefSeq, Jul 2008]

Product images:



Circular map for RG207603