

## Product datasheet for **RG207598**

### Thrombomodulin (THBD) (NM\_000361) Human Tagged ORF Clone

#### Product data:

Product Type:	Expression Plasmids
Product Name:	Thrombomodulin (THBD) (NM_000361) Human Tagged ORF Clone
Tag:	TurboGFP
Symbol:	Thrombomodulin
Synonyms:	AHUS6; BDCA-3; BDCA3; CD141; THPH12; THRM; TM
Mammalian Cell Selection:	Neomycin
Vector:	pCMV6-AC-GFP (PS100010)
E. coli Selection:	Ampicillin (100 ug/mL)



[View online »](#)

**ORF Nucleotide Sequence:**

>RG207598 representing NM\_000361  
 Red=Cloning site Blue=ORF Green=Tags(s)

TTTTGTAATACGACTCACTATAGGGCGGCCGGGAATTCGTCGACTGGATCCGGTACCGAGGAGATCTGCC  
 GCC**CGGATCGCC**

ATGCTTGGGGTCTTGGTCTTGGCGCGCTGGCCCTGGCCGGCCTGGGGTCCCCGCACCCGAGAGCCGC  
 AGCCGGGTGGCAGCCAGTGCCTGAGCAGCACTGCTTCGCGCTCTACCCGGGCCCGCGACTTCTCAA  
 TGCCAGTCAGATCTGCGACGGACTGCGGGGCCACCTAATGACAGTGCCTCTCGGTGGCTGCCGATGTC  
 ATTTCTTGTACTGAACGGCGACGGCGGCTTGGCCGCCGGCGCTCTGGATCGGCTGCAGCTGCCAC  
 CCGGTGCGGGACCCCAAGCGCTCGGCCCTGCGCGGCTTCCAGTGGTTACGGGAGACAACAACAC  
 CAGCTATAGCAGTGGGCAGGCTCGACCTCAATGGGGCTCCCTCTGCGGCCGTTGTGCGTCGCTGTC  
 TCCGCTGCTGAGCCACTGTGCCAGCGAGCCGATCTGGGAGGAGCAGCAGTGGAAAGTGAAGGCCGATG  
 GCTTCTCTGCGAGTCCACTTCCAGCCACTGCAGGCCACTGGCTGTGGAGCCCGCGCCGGCTGC  
 CGCGTCTCGATCACCTACGGCACCCGTTGCGGCCCGCGGAGCGGACTTCCAGGCGCTGCCGGTGGC  
 AGCTCCGCGCGGTGGTCCCTCGGCTTACAGCTAATGTGCACCGCGCCGCCGGAGCGGTCCAGGGGC  
 ACTGGGCCAGGGAGGCGCCGGCGCTTGGGACTGCAGCCTGGAGAACGGCGGCTGCGAGCACGCGTGCAA  
 TGCGATCCCTGGGGTCCCCGCTGCCAGTGCCAGCCGGCGCCGCTGCAGGCAGACGGGGCTCCTGC  
 ACCGCATCCGCGACGAGTCTGCAACGACCTCTGCGAGCACTTCTGCGTCCCAACCCCGACGCGCG  
 GCTCCTACTCGTGCATGTGCGAGACCGGTACCGGCTGGCGGCCGACCAACCCGGTGGCAGGACGTGGA  
 TGACTGCATACTGGAGCCAGTCCGTGTCCGACGCGTGTGTAACACACAGGGTGGCTTCGAGTGCCAC  
 TGCTACCTAACTACGACTGGTGGACGGCAGTGTGGAGCCCGTGGACCCGTTCCAGAGCCAAT  
 GCGAGTACCAGTCCAGCCCTGAACAACTAGCTACCTCTGCGTCTGCGCCGAGGGCTTCGCGCCCAT  
 TCCCCAGGAGCCGACAGGTGCCAGATGTTTTGAACAGACTGCTGTCCAGCCGACTGCGACCCCAAC  
 ACCCAGGCTAGCTGTGAGTGCCTGAAGGCTACATCCTGGACGACGGTTTCATCTGCACGGACATCGACG  
 AGTGCGAAAACGGCGGCTTCTGCTCCGGGTGTGCCACAACCTCCCGGTACCTTCGAGTGCATCTGCGG  
 GCCCGACTCGGCCCTTGTCCGCCACATTGGCACCAGTGTGACTCCGGCAAGGTGGACGGTGGCGACAGC  
 GGCTCTGGCGAGCCCCCGCCAGCCGACGCCGGCTCCACCTTGACTCCTCCGGCGTGGGGCTCGTGC  
 ATTCGGGCTTGTCTATAGGCATCTCCATCGCGAGCCTGTGCTGGTGGTGGCGCTTTGGCGCTCCTCTG  
 CCACCTGCGCAAGAAGCAGGGCGCCGCCAGGGCAAGATGGAGTACAAGTGGCGGCCCTTCCAAGGAG  
 GTAGTGTGCAGCACGTGCGGACCGAGCGGACGCCGACAGACTC

AC**GGGCCGCT**CGAG - GFP Tag - GTTAA

**Protein Sequence:**

>RG207598 representing NM\_000361  
 Red=Cloning site Green=Tags(s)

MLGVLVLGALALAGLGFPAEPQPGGSQCVEHDCFALYPGPATFLNASQICDGLRGLMTVRSSVAADV  
 ISLLLNGDGGVGRRLWIGLQLPPGCGDPKRLGPLRGFQWVTGDNNTSYSRWARLDLNGAPLCGPLCVAV  
 SAAEATVPSEPIWEEQQCEVKADGFLCEFHPATCRPLAVEPGAAAAAVSITYGTPFAARGADFQALPVG  
 SSAAVAPLGLQLMCTAPPGAVQGHWAREAPGAWDCSVENGGCEHACNAIPGAPRCQCPAGAALQADGRSC  
 TASATQSCNDLCEHFCVNPNDQPGSYSCMCETGYRLAADQHRCEVDVDDCILEPSPCQRCVNTQGGFECH  
 CYPNYDLVDGECVEPVDPCFRANCEYQCQPLNQTSYLCVCAEGFAPIPHEPHRCQMFQNTACPADCDPN  
 TQASCECEPEGYILDDGFICTDIDECENGGFCSGVCHNLPGTFECICGPDSALVRHIGTDCDSGKVDGGDS  
 GSGEPPPSPTPGSTLTPPAVGLVHSGLLIGISIASLCLVVALLLALLCHLRKKQGAARAKMEYKCAAPSKE  
 VVLQHVRTERTPQRL

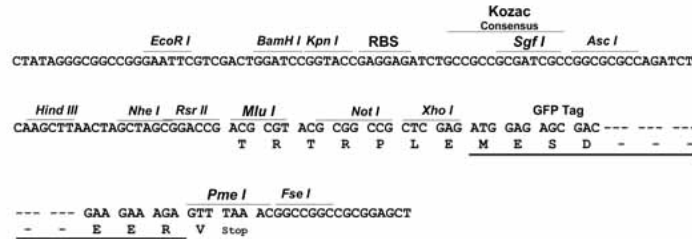
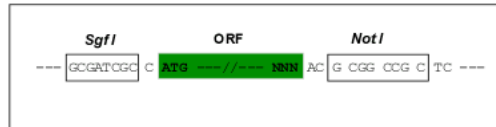
TRPLE - GFP Tag - V

**Restriction Sites:**

Sgfl-NotI

**Cloning Scheme:**

Cloning sites used for ORF Shuttling:


**ACCN:** NM\_000361

**ORF Size:** 1725 bp

**OTI Disclaimer:** Due to the inherent nature of this plasmid, standard methods to replicate additional amounts of DNA in *E. coli* are highly likely to result in mutations and/or rearrangements. Therefore, OriGene does not guarantee the capability to replicate this plasmid DNA. Additional amounts of DNA can be purchased from OriGene with batch-specific, full-sequence verification at a reduced cost. Please contact our customer care team at [custsupport@origene.com](mailto:custsupport@origene.com) or by calling 301.340.3188 option 3 for pricing and delivery.

The molecular sequence of this clone aligns with the gene accession number as a point of reference only. However, individual transcript sequences of the same gene can differ through naturally occurring variations (e.g. polymorphisms), each with its own valid existence. This clone is substantially in agreement with the reference, but a complete review of all prevailing variants is recommended prior to use. [More info](#)

**OTI Annotation:** This clone was engineered to express the complete ORF with an expression tag. Expression varies depending on the nature of the gene.

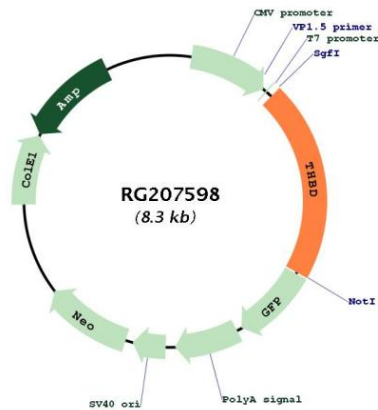
**Components:** The ORF clone is ion-exchange column purified and shipped in a 2D barcoded Matrix tube containing 10ug of transfection-ready, dried plasmid DNA (reconstitute with 100 ul of water).

**Reconstitution Method:**

1. Centrifuge at 5,000xg for 5min.
2. Carefully open the tube and add 100ul of sterile water to dissolve the DNA.
3. Close the tube and incubate for 10 minutes at room temperature.
4. Briefly vortex the tube and then do a quick spin (less than 5000xg) to concentrate the liquid at the bottom.
5. Store the suspended plasmid at -20°C. The DNA is stable for at least one year from date of shipping when stored at -20°C.

RefSeq:	<u>NM_000361.2, NP_000352.1</u>
RefSeq Size:	4048 bp
RefSeq ORF:	1728 bp
Locus ID:	7056
UniProt ID:	<u>P07204</u>
Cytogenetics:	20p11.21
Domains:	CLECT, EGF
Protein Families:	Druggable Genome, Transmembrane
Protein Pathways:	Complement and coagulation cascades
Gene Summary:	The protein encoded by this intronless gene is an endothelial-specific type I membrane receptor that binds thrombin. This binding results in the activation of protein C, which degrades clotting factors Va and VIIIa and reduces the amount of thrombin generated. Mutations in this gene are a cause of thromboembolic disease, also known as inherited thrombophilia. [provided by RefSeq, Jul 2008]

**Product images:**



Circular map for RG207598