

Product datasheet for **RG207562**

BOB1 (POU2AF1) (NM_006235) Human Tagged ORF Clone

Product data:

Product Type:	Expression Plasmids
Product Name:	BOB1 (POU2AF1) (NM_006235) Human Tagged ORF Clone
Tag:	TurboGFP
Symbol:	BOB1
Synonyms:	BOB1; OBF-1; OBF1; OCAB
Mammalian Cell Selection:	Neomycin
Vector:	pCMV6-AC-GFP (PS100010)
E. coli Selection:	Ampicillin (100 ug/mL)
ORF Nucleotide Sequence:	>RG207562 representing NM_006235 Red=Cloning site Blue=ORF Green=Tags(s)

TTTTGTAATACGACTCACTATAGGGCGGCCGGAATTCGTCGACTGGATCCGGTACCGAGGAGATCTGCC
GCC**CGATCGCC**

ATGCTCTGGCAAAAACCCACAGCTCCGGAGCAAGCCCCAGCCCCGGCCCGCCATACCAGGGCGTCCGTG
TGAAGGAGCCAGTGAAGGAAGTCTGAGGAGGAAGCGAGGCCACGCCAGCAGTGGGGCAGCACCTGCACC
TACGGCGGTGGTCTGCCCCATCAGCCCCTGGCGACCTACACCACAGTGGGTCTTCTGCCTGGACATG
GAAGTTCTGTCTGCAGTGACAGAGGAGGCTGCCCTGTGTGCCGGCTGGCTCTCCAGCCACCCCGG
CCACCCTGCAGCCCCTGGCCCCATGGACACCTTACACCGAGTATGTGCCCATGAAGCTGTCAGCTGCCC
CTACTCAGCTGACATGTATGTGCAGCCCGTGTGCCCCAGCTACACGGTGGTGGGGCCCTCCTCAGTGTG
ACCTATGCCTCTCCGCCACTCATACCAATGTCACGACAAGAAGCTCCGCCACGCCCGCAGTGGGGCCCC
CGCTGGAGGGCCAGAGCACCAGGCACCCTCACCTATTTCCCGTGGCCTCAGCCCCTTTCCACACTACC
CACCTCCACCCTGCAGTACCAGCCTCCGGCCCCAGCCCTACCTGGGCCCCAGTTTGTCCAGCTCCCCATC
TCTATCCAGAGCCAGTCCTTCAGGACATGGAAGACCCCAAGAAGGCCGCCAGCTCGTTGACCATCGACA
AGCTGCTTTTGGAGGAAGAGGATAGCGACGCCTATGCGCTTAACCACACTCTCTGTGGAAGGCTTT

ACGCGTACGCGGCCGCTCGAG - GFP Tag - GTTTAA



[View online »](#)

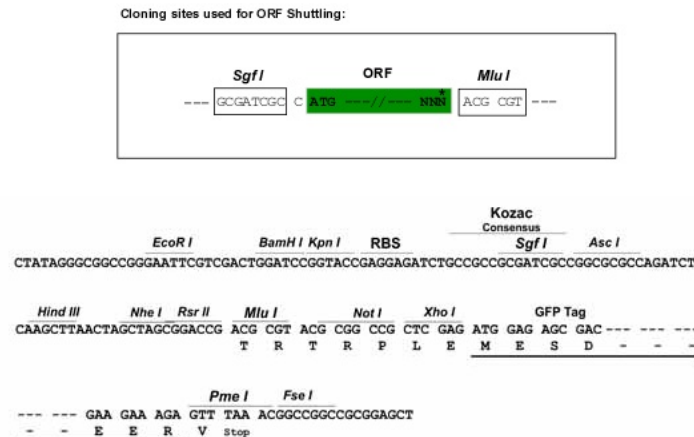
Protein Sequence: >RG207562 representing NM_006235
 Red=Cloning site Green=Tags(s)

MLWQKPTAPEQAPAPARPYQGVVRVKEPVKELLRRKRGHASSGAAPATAVVLPHQPLATYTTVGPSCLDM
 EGSVSAVTEEAALCAGWLSQPTPATLQPLAPWTPYTEYVPHEAVSCPYSADMYVQPVCPSTYVVGPSSVL
 TYASPLITINVTTRSSATPAVGPPLLEGPEHQAPLTYFPWPQPLSTLPTSTLQYQPPAPALPGPQFVQLPI
 SIPEPVLQDMEDPRRAASLTIKLLLEEDSDAYALNHTLSVEGF

TRTRPLE - GFP Tag - V

Restriction Sites: SgfI-MluI

Cloning Scheme:



ACCN: NM_006235

ORF Size: 768 bp

OTI Disclaimer: The molecular sequence of this clone aligns with the gene accession number as a point of reference only. However, individual transcript sequences of the same gene can differ through naturally occurring variations (e.g. polymorphisms), each with its own valid existence. This clone is substantially in agreement with the reference, but a complete review of all prevailing variants is recommended prior to use. [More info](#)

OTI Annotation: This clone was engineered to express the complete ORF with an expression tag. Expression varies depending on the nature of the gene.

Components: The ORF clone is ion-exchange column purified and shipped in a 2D barcoded Matrix tube containing 10ug of transfection-ready, dried plasmid DNA (reconstitute with 100 ul of water).

Reconstitution Method:

1. Centrifuge at 5,000xg for 5min.
2. Carefully open the tube and add 100ul of sterile water to dissolve the DNA.
3. Close the tube and incubate for 10 minutes at room temperature.
4. Briefly vortex the tube and then do a quick spin (less than 5000xg) to concentrate the liquid at the bottom.
5. Store the suspended plasmid at -20°C. The DNA is stable for at least one year from date of shipping when stored at -20°C.

RefSeq: [NM_006235.3](#)

RefSeq Size: 3314 bp

RefSeq ORF: 771 bp

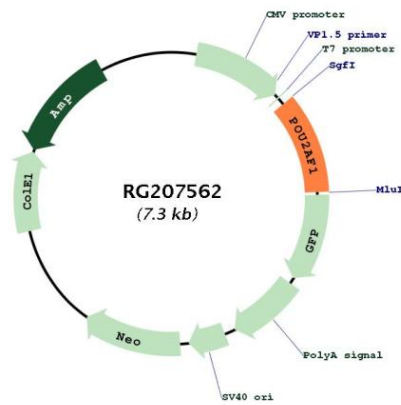
Locus ID: 5450

UniProt ID: [Q16633](#)

Cytogenetics: 11q23.1

Gene Summary: Transcriptional coactivator that specifically associates with either OCT1 or OCT2. It boosts the OCT1 mediated promoter activity and to a lesser extent, that of OCT2. It has no intrinsic DNA-binding activity. It recognizes the POU domains of OCT1 and OCT2. It is essential for the response of B-cells to antigens and required for the formation of germinal centers. [UniProtKB/Swiss-Prot Function]

Product images:



Circular map for RG207562