

Product datasheet for **RG207560**

TESK1 (NM_006285) Human Tagged ORF Clone

Product data:

Product Type:	Expression Plasmids
Product Name:	TESK1 (NM_006285) Human Tagged ORF Clone
Tag:	TurboGFP
Symbol:	TESK1
Mammalian Cell Selection:	Neomycin
Vector:	pCMV6-AC-GFP (PS100010)
E. coli Selection:	Ampicillin (100 ug/mL)



[View online »](#)

ORF Nucleotide Sequence:

>RG207560 representing NM_006285
 Red=Cloning site Blue=ORF Green=Tags(s)

TTTTGTAATACGACTCACTATAGGGCGGCCGGAATTCGTCGACTGGATCCGGTACCGAGGAGATCTGCC
 GCC**CGGATCGCC**

ATGGCCGGGGAACGGCCCCACTGCGGGCCCTGGGCCGGCCCTGGAGAGGTGCCGGGGAGGGGCCCC
 CGGGCCGGGGGCACGGGCGGAGGCCCGGGCCGGGCCCTCCTCCTACCGGGCTCTCCGACGCGC
 CGTGTCTAGCCTGGCGCGTGTGGACGATTTTCACTGCGCGGAGAAGATCGGGGCCGGCTTCTTCTGAG
 GTCTACAAGTTTCGGCACCGACAGTCAGGGCAAGTCATGGTGTGAAGATGAACAAGCTCCCCAGTAACC
 GGGGAACACACTACGGGAAGTGCAGCTGATGAACCGGCTCAGGCACCCCAACATCTAAGTTTCATGGG
 AGTCTGTGTGCACAGGGACAGCTGCACGCTTTACAGAGTATATGAATGGGGGACATTGGAACAGCTG
 CTCAGCTCCCCTGAACCCTATCCTGGCCGGTCAAGCTCCACCTGGCCCTGGACATTGCCGAGGCGCTGC
 GGTACCTGCACCTCAAAGGTGTATTTACCAGGACCTCACATCCAAGAAGTGTCTAGTCCGACGGGAAGA
 TCGAGGCTTACCAGCTGTCGTGGGTGACTTCGGGCTGGCCGAAAAGATTCTGTGTATAGGGAGGGGGCA
 AGGAAGGAGCCATTGGCCGTGGTGGGCTCCCCATACTGGATGGCTCCAGAGGTGTACGGGGTGAGCTGT
 ATGATGAGAAGGCTGATGTCTTTGCCTTCGGGATTGTCCTCTGTGAGCTCATCGCCCGAGTACCTGCAGA
 CCCTGACTACCTACCACGCACTGAGGACTTTGGCCTGGATGTGCCTGCTTCCGAACCTCTGGTGGGGAT
 GACTGCCCACTGCCTTTCTTGTCTCTGGCCATCCACTGCTGCAACCTGGAACCCAGCACCCGTGCCCCCT
 TCACCGAAATTACCCAGCACCTGGAATGGATCCTGGAGCAGCTGCCTGAGCCAGCCCCACTACCCAGGAC
 CGCCCTGACACACAATCAGGGCTCTGTTGCAAGAGGGGGTCCCTCTGCCACGCTTCCAGGCCAGATCCC
 CGGCTTCCCGAAGCCGGTCAAGCTCTTCTGCCCCATCACCAGAATCACCCCAACTGGGGGGACA
 ATCTGACTCGAGTCAACCCCTTCTACTACGGGAAGACCTCAGGGGTGGCAAGATCAAGCTTTAGACAC
 ACCAGCAAGCCAGTCTGCCTCTTGTGCCACCATCACCATTCCCATCCACTCAGCTGCCCTTGGTGACC
 ACTCCGGAGACCCTGGTCCAGCCTGGGACACCTGCCCGCCGCTGCCGCTACTACCCTCATCCCCGAGC
 TCCCCCGCGTATGGAGACAGCACTGCCAGTCTGGCCCTCCCGCTGTGGGCCCTCGGCTGAAGAGAA
 GATGGAGTGCAGGGCAGCAGCCCTGAGCCGGAACCTCCAGGGCCAGCGCCCGAGCTGCCTCTGGCTGTG
 GCCACAGACAATTCATCAGCACCTGTTCTCGGCCTCCAACCTGGTCCCTAGATCAGGACCCGTCC
 TCAATAACAATCCCCAGCTGTGGTGGTGAACCTCCCAACAAGGCTGGGCTGGGGAGCCCTGGAACCGGGC
 CCAGCATAGCCTGCCCGGGCGGACGCCCTGGAGCGGACAGAACCCTCGCCACCCCTTCAGCTCCCCGG
 GAGCCCGATGAGGGGCTGCCCTGTCTGGCTGCTGCCTCGGCCCTTCAGCTTTGGCTTCTGTCCATGT
 GCCCCCGCCACACCAGCTGTTGCCCGCTACCGCAACCTGAACTGTGAGGCGGGCAGTCTCCTTGCCA
 CCGAGGGCACCACGCCAAGCCACCCACCCAGCCTGCAGCTGCCTGGGGCAGCTCT

ACGCGTACGCGGCCGCTCGAG – GFP Tag – GTTTAA

Protein Sequence:

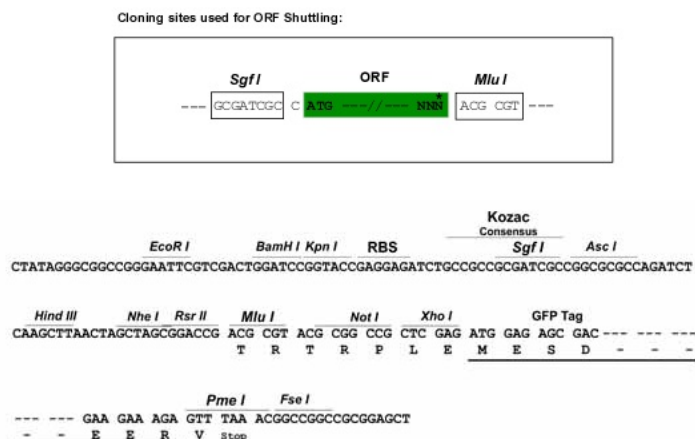
>RG207560 representing NM_006285
 Red=Cloning site Green=Tags(s)

MAGERPPLRGPGPGEVPGEGPPGPGTGGGPGRGRPSSYRALRSVSSLARVDDFHCAEKIGAGFFSE
 VYKVRHRQSGQVMVLKMNKLPNLRGNTLREVQLMNRLRHPNILRFMGVCVHQQLHALTEYMNGGTLLEQL
 LSSPEPLSWPVRLHLALDIARGLRYLHSGVFRDLTSTKNCVLRREDRGTAVVGDVFLAEKIPVYREGA
 RKEPLAVVGSPPYMAPEVLRGELYDEKADVAFGIVLCEL IARVPADPDYLPRTEDFGLDVPFRTLVDG
 DCPLPFLLLAIHCCNLEPSTRAPFTEITQHLEWILEQLPEPAPL TRTAL THNQGSVARGGPSATLPRPDP
 RLSRSRSDLFLPPSPESPNNWGDNL TRVNPFLSLREDLRGGKIKLLDTPSKPVLPLVPPSPFPSTQLPLVT
 TPETLVQPGTPARRCRSLPSSPELPRRMETALPGPGPPAVGPPSAEEKMECEGSSPEPEPPGPAPQLPLAV
 ATDNFISTCSSASQPWSPRSGPVLNNPPAVVVNSPQGWAGEPWNRAQHSLPRAAALERTEPSPPPSAPR
 EPDEGLPCPGCCLGPFSGFLSMCPRPTPAVARYRNLNCEAGSLLCHRGHAKPPTPSLQLPGARS

TRTRPLE – GFP Tag – V

Restriction Sites:

Sgfl-MluI

Cloning Scheme:


ACCN: NM_006285

ORF Size: 1878 bp

OTI Disclaimer: The molecular sequence of this clone aligns with the gene accession number as a point of reference only. However, individual transcript sequences of the same gene can differ through naturally occurring variations (e.g. polymorphisms), each with its own valid existence. This clone is substantially in agreement with the reference, but a complete review of all prevailing variants is recommended prior to use. [More info](#)

OTI Annotation: This clone was engineered to express the complete ORF with an expression tag. Expression varies depending on the nature of the gene.

Components: The ORF clone is ion-exchange column purified and shipped in a 2D barcoded Matrix tube containing 10ug of transfection-ready, dried plasmid DNA (reconstitute with 100 ul of water).

Reconstitution Method:

1. Centrifuge at 5,000xg for 5min.
2. Carefully open the tube and add 100ul of sterile water to dissolve the DNA.
3. Close the tube and incubate for 10 minutes at room temperature.
4. Briefly vortex the tube and then do a quick spin (less than 5000xg) to concentrate the liquid at the bottom.
5. Store the suspended plasmid at -20°C. The DNA is stable for at least one year from date of shipping when stored at -20°C.

RefSeq: [NM_006285.2](#), [NP_006276.2](#)

RefSeq Size: 2559 bp

RefSeq ORF: 1881 bp

Locus ID: 7016

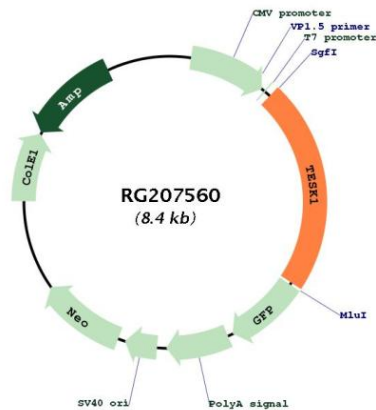
UniProt ID: [Q15569](#)

Cytogenetics: 9p13.3

Protein Families: Druggable Genome, Protein Kinase

Gene Summary: This gene product is a serine/threonine protein kinase that contains an N-terminal protein kinase domain and a C-terminal proline-rich domain. Its protein kinase domain is most closely related to those of the LIM motif-containing protein kinases (LIMKs). The encoded protein can phosphorylate myelin basic protein and histone in vitro. The testicular germ cell-specific expression and developmental pattern of expression of the mouse gene suggests that this gene plays an important role at and after the meiotic phase of spermatogenesis. Alternative splicing results in multiple transcript variants encoding different isoforms. [provided by RefSeq, Dec 2015]

Product images:



Circular map for RG207560