

Product datasheet for **RG207541**

CNOT4 (NM_001008225) Human Tagged ORF Clone

Product data:

Product Type:	Expression Plasmids
Product Name:	CNOT4 (NM_001008225) Human Tagged ORF Clone
Tag:	TurboGFP
Symbol:	CNOT4
Synonyms:	CLONE243; NOT4; NOT4H
Mammalian Cell Selection:	Neomycin
Vector:	pCMV6-AC-GFP (PS100010)
E. coli Selection:	Ampicillin (100 ug/mL)



[View online »](#)

ORF Nucleotide Sequence:

>RG207541 representing NM_001008225
 Red=Cloning site Blue=ORF Green=Tags(s)

TTTTGTAATACGACTCACTATAGGGCGGCCGGAATTCGTCGACTGGATCCGGTACCGAGGAGATCTGCC
 GCC**GCGATCGCC**

ATGTCCTCGCAGTCTGATGCGAAGGAAGACCCTGTGGAGTGCCCTCTTTCATGGAGCCCTGGAGATAG
 ATGATATCAACTTTTCCCTTGACCTGTGGCTACCAGATTTGCCGATTTGTTGGCATCGAATTCGCAC
 TGATGAAAATGGCTTTGTCTGCATGTAGAAAGCCATATCCAGAAGACCCAGCAGTTTATAAACTACTC
 TCCCAGGAAGAGCTGCAAAGGATAAAGAATGAGAAAAACAGAAACAAAATGAGAGAAAACAGAAAATAT
 CAGAAAATCGCAAACATTTGGCTAGTGTACGTGTCTACAAAAAACCTCGTCTTTGTTGTAGTTTATC
 TCAGCGCTAGCAGACCCAGAGGTTTTAAAACGACCAGAATATTTTGGGAAGTTTGGTAAAAACATAAA
 GTTGTCAATAAATAGCACATCATATGCAGGCTCACAGGGTCCAAGTCCAGTGCTTATGTAACCTATA
 TCCGGTCAGAAGACGCTCTCAGAGCCATACAGTGTGTCAACAATGGTAGTAGATGGCAGAACACTTAA
 GGCATCTCTAGGTACAACAAAATACTGCAGTACTTCTTAAAGAATATGCAGTGTCCAAAACCTGACTGC
 ATGTATCTTCATGAATTTGGGGATGAGGCGGCCAGCTTCAAAAAGAGGAAATGCAGGCGGGTAAACACC
 AAGAATATGAACAGAAGCTACTTCAAGAATTATATAAAATTAATCCCAATTTTCTTCAGCTATCTACGGG
 TTCAGTTGATAAAAAAAGAACAAGTGACACCACTGCAGAGCCCATGACAAAACCTTCAGATTCTCTC
 AGTATAGGGAACGGTGATAATCCCAGCAGATATCTAACAGTGATACGCCTTCACCACCCTGGTTTGT
 CAAAATCCAATCCAGTCATCCCCATCAGTTCATCCAATCACAGTGCACGGTCCCCCTTTGAAGGGGAGT
 AACAGAGTCACAGTCGTTATTCTCAGACATTTTCGCCATCCCAACCTATCCCAAGTGGGCTTCTCTCT
 TTCCCCAGCTCCCACAGACATCCAGTACTGGCTACAGCACCAGAACCACAGAGCCTCTCACATCAG
 AAACAATCCAGTATCATCTCTACAGACTGGCAAGCAGCTTTTGGCTTTGGTTCTTAACAACACAGA
 GGATGACTTGGGTTTTGATCCCTTCGATGTCACTCGAAAAGCCTTAGCAGACCTGATTGAGAAGGAACTG
 TCCGTTCAAGACCAACCTTCCCTTTCGCCACATCTCTCAGAACTCTCTTACACACTACAACCGCCA
 AAGGTCCAGGCTCTGGATTCTGCATCTGCTGCAGCTACAAATGCCAATTCTCTCAATAGTACCTTTTC
 AGTCTTGGCCCAGAGGTTCCCTCAATTTACAGCAGCACCAGCGGTTTATAAATCATTAGTTTCCAGGC
 CAGGCAGCCCGCTATCCTTGGATGGCTTTCCACGCAATAGCATCATGCCTTGAACCACACAGCAAACC
 CCACCTCAATAGTAATTTCTGGACTTGAATCTCCGCCACAGCACAACACAGGCTGGGAGGGATCCC
 TGTAGCAGGGGAAGAAGAGGTGAAGTTTCGACCATGCCACTGTCAACCTCTCCATTCCATTACAACAA
 GGACAGCAGCCTACAAGTCTCCACTACTGTGGCC

ACGCGTACGCGGCCGCTCGAG - GFP Tag - GTTTAA

Protein Sequence:

>RG207541 representing NM_001008225
 Red=Cloning site Green=Tags(s)

MSRSPDAKEDPVECPLCMEPLEIDDINFFPCTCGYQICRFWHRIRTDENGLCPACRKPYPEDPAVYKPL
 SQEELQRIKNEKKQKQNERKQKISENRKHLASVRVVKNLVVFVGLSQRLADPEVLKRPEYFGKFGKIHK
 VVINNSTSYAGSQGPSASAYVTYIRSEDALRAIQCVNNVVVDGRTLKASLGTTKYCSYFLKNMQCPKPD
 MYLHELGDAAASFKEEMQAGKHQEQKLLQELYKLNPNFLQLSTGSDKNKNKVTPLQSPIDKPSDSL
 SIGNGDNSQQISNSDTPSPPPGLSKSNPVIPISSNHSARSPFEGAVTESQSLFSDIFRHPNPIPSGLPP
 FPSSPQTSDDWPTAPEPQSLFTSETIPVSSSTDWQAAFQGFSSKQPEDDLGDFDPDVTRKALADLIEKEL
 SVQDQPSLSPTSLQNSSHTTTAKGPGSGFLHPAAATNANSLNSTFVLPQRFQFQHRVYNSFSFPG
 QAARYPWMAFPRNSIMHLNHTANPTSNSNFLDLNLPQHNTGLGGIPVAGEEEVKVSTMPLSTSSHSLQQ
 GQPTSLHTTVA

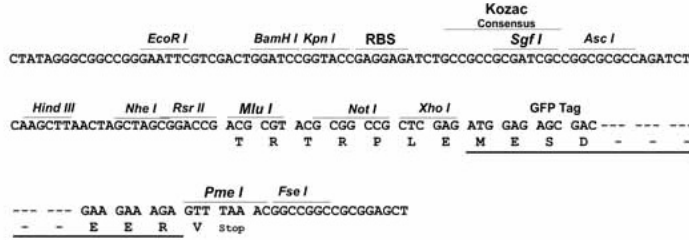
TRTRPLE - GFP Tag - V

Restriction Sites:

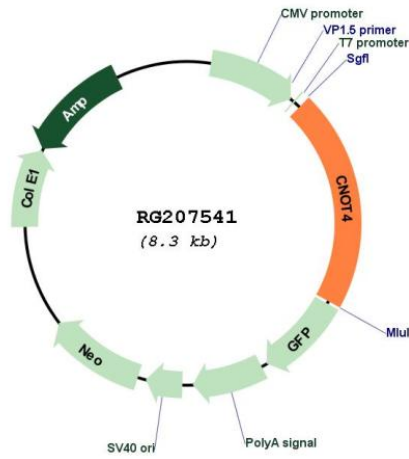
Sgfl-Mlul

Cloning Scheme:

Cloning sites used for ORF Shutting:



Plasmid Map:



ACCN: NM_001008225
 ORF Size: 1716 bp

OTI Disclaimer:	The molecular sequence of this clone aligns with the gene accession number as a point of reference only. However, individual transcript sequences of the same gene can differ through naturally occurring variations (e.g. polymorphisms), each with its own valid existence. This clone is substantially in agreement with the reference, but a complete review of all prevailing variants is recommended prior to use. More info
OTI Annotation:	This clone was engineered to express the complete ORF with an expression tag. Expression varies depending on the nature of the gene.
Components:	The ORF clone is ion-exchange column purified and shipped in a 2D barcoded Matrix tube containing 10ug of transfection-ready, dried plasmid DNA (reconstitute with 100 ul of water).
Reconstitution Method:	<ol style="list-style-type: none">1. Centrifuge at 5,000xg for 5min.2. Carefully open the tube and add 100ul of sterile water to dissolve the DNA.3. Close the tube and incubate for 10 minutes at room temperature.4. Briefly vortex the tube and then do a quick spin (less than 5000xg) to concentrate the liquid at the bottom.5. Store the suspended plasmid at -20°C. The DNA is stable for at least one year from date of shipping when stored at -20°C.
RefSeq:	NM_001008225.1 , NP_001008226.1
RefSeq Size:	2808 bp
RefSeq ORF:	1719 bp
Locus ID:	4850
UniProt ID:	O95628
Cytogenetics:	7q33
Protein Families:	Druggable Genome, Transcription Factors
Protein Pathways:	RNA degradation
Gene Summary:	The protein encoded by this gene is a subunit of the CCR4-NOT complex, a global transcriptional regulator. The encoded protein interacts with CNOT1 and has E3 ubiquitin ligase activity. Several transcript variants encoding different isoforms have been found for this gene.[provided by RefSeq, Jul 2010]