

Product datasheet for **RG207540**

BST2 (NM_004335) Human Tagged ORF Clone

Product data:

Product Type: Expression Plasmids
Product Name: BST2 (NM_004335) Human Tagged ORF Clone
Tag: TurboGFP
Symbol: BST2
Synonyms: CD317; HM1.24; TETHERIN
Mammalian Cell Selection: Neomycin
Vector: pCMV6-AC-GFP (PS100010)
E. coli Selection: Ampicillin (100 ug/mL)
ORF Nucleotide Sequence: >RG207540 representing NM_004335
 Red=Cloning site Blue=ORF Green=Tags(s)

TTTTGTAATACGACTCACTATAGGGCGCCGGGAATTCGTCGACTGGATCCGGTACCGAGGAGATCTGCC
 GCC**CGATCGCC**

ATGGCATCTACTTCGTATGACTATTGCAGAGTGCCCATGGAAGACGGGGATAAGCGCTGTAAGCTTCTGC
 TGGGGATAGGAATTCTGGTGCTCCTGATCATCGTGATTCTGGGGTGCCCTTGATTATCTTCACCATCAA
 GGCCAACAGCGAGGCCTGCCGGGACGGCCTTCGGGCAGTGATGGAGTGTCGCAATGTCACCCATCTCCTG
 CAACAAGAGCTGACCGAGGCCAGAAGGGCTTTCAGGATGTGGAGGCCAGGCCACCTGCAACCACA
 CTGTGATGGCCCTAATGGCTTCCCTGGATGCAGAGAAGGCCAAGGACAAAAGAAAGTGGAGGAGCTTGA
 GGGAGAGATCACTACATTAACCATAAAGCTTCAGGACGCGTCTGCAGAGGTGGAGCGACTGAGAAGAGAA
 AACCAGGTCTTAAGCGTGAGAATCGCGGACAAGAAGTACTACCCAGCTCCCAGGACTCCAGCTCCGCTG
 CGGCGCCCCAGCTGCTGATTGTGCTGCTGGGCCTCAGCGCTCTGCTGCAG

AG**CGGACCG**ACGCGTACGCGGCCGCTCGAG - GFP Tag - GTTTAA

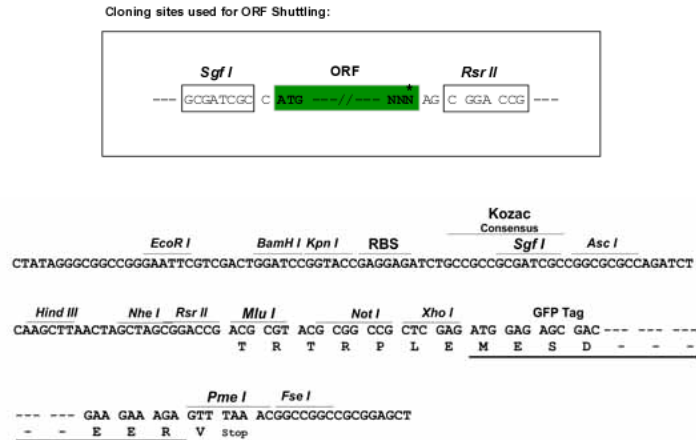
Protein Sequence: >RG207540 representing NM_004335
 Red=Cloning site Green=Tags(s)

MASTSYDYCRVPMEDGDKRCKLLLGIGILVLLIIVILGVPLIIFTIKANSEACRDLRAVMECRNVTHLL
 QQELTEAQKGFQDVEAQAATCNHTVMALMASLDAEKAQGGKQKVEELEGITTLNHKLQDASAEVERLRRE
 NQVLSVRIADKYYPPSSQDSSSAAAPQLLIVLLGLSALLQ

SGPTRRRLE - GFP Tag - V

Restriction Sites: Sgfl-RsrII



Cloning Scheme:


ACCN: NM_004335

ORF Size: 540 bp

OTI Disclaimer: Due to the inherent nature of this plasmid, standard methods to replicate additional amounts of DNA in E. coli are highly likely to result in mutations and/or rearrangements. Therefore, OriGene does not guarantee the capability to replicate this plasmid DNA. Additional amounts of DNA can be purchased from OriGene with batch-specific, full-sequence verification at a reduced cost. Please contact our customer care team at custsupport@origene.com or by calling 301.340.3188 option 3 for pricing and delivery.

The molecular sequence of this clone aligns with the gene accession number as a point of reference only. However, individual transcript sequences of the same gene can differ through naturally occurring variations (e.g. polymorphisms), each with its own valid existence. This clone is substantially in agreement with the reference, but a complete review of all prevailing variants is recommended prior to use. [More info](#)

OTI Annotation: This clone was engineered to express the complete ORF with an expression tag. Expression varies depending on the nature of the gene.

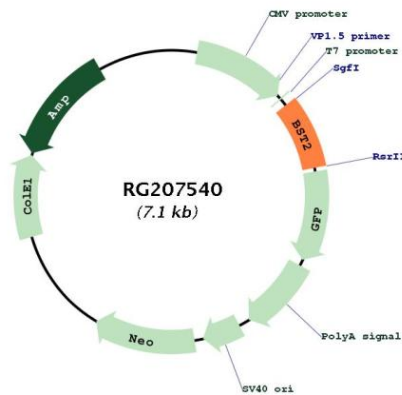
Components: The ORF clone is ion-exchange column purified and shipped in a 2D barcoded Matrix tube containing 10ug of transfection-ready, dried plasmid DNA (reconstitute with 100 ul of water).

Reconstitution Method:

1. Centrifuge at 5,000xg for 5min.
2. Carefully open the tube and add 100ul of sterile water to dissolve the DNA.
3. Close the tube and incubate for 10 minutes at room temperature.
4. Briefly vortex the tube and then do a quick spin (less than 5000xg) to concentrate the liquid at the bottom.
5. Store the suspended plasmid at -20°C. The DNA is stable for at least one year from date of shipping when stored at -20°C.

RefSeq:	NM_004335.4
RefSeq Size:	983 bp
RefSeq ORF:	543 bp
Locus ID:	684
UniProt ID:	Q10589
Cytogenetics:	19p13.11
Protein Families:	Druggable Genome, ES Cell Differentiation/IPS, Transmembrane
Gene Summary:	Bone marrow stromal cells are involved in the growth and development of B-cells. The specific function of the protein encoded by the bone marrow stromal cell antigen 2 is undetermined; however, this protein may play a role in pre-B-cell growth and in rheumatoid arthritis. [provided by RefSeq, Jul 2008]

Product images:



Circular map for RG207540