

## Product datasheet for **RG207537**

### DHDH (NM\_014475) Human Tagged ORF Clone

#### Product data:

|                           |   |
|---------------------------|---|
| Product Type:             | Expression Plasmids   |
| Product Name:             | DHDH (NM_014475) Human Tagged ORF Clone                                     |
| Tag:                      | TurboGFP  |
| Symbol:                   | DHDH  |
| Synonyms:                 | 2DD; HUM2DD   |
| Mammalian Cell Selection: | Neomycin  |
| Vector:                   | pCMV6-AC-GFP (PS100010)   |
| E. coli Selection:        | Ampicillin (100 ug/mL)  |
| ORF Nucleotide Sequence:  | >RG207537 representing NM_014475<br>Red=Cloning site Blue=ORF Green=Tags(s) |

TTTTGTAATACGACTCACTATAGGGCGGCCGGAATTCGTCGACTGGATCCGGTACCGAGGAGATCTGCC  
GCC**CGATCGCC**

ATGGCGCTGCGCTGGGGCATCGTGTCTGTCGGCCTCATCTCCAGCGACTTCACAGCCGTGCTGCAGACGC  
TGCCTCGCTCTGAGCACCAGGTGGTGGCGGTGGCGGCCCGCATCTGAGCCGTGCGAAGGAGTTGCACA  
GAAACACGACATCCCAAGGCCTACGGCTCCTATGAGGAGCTGGCCAAGGACCCGAGCGTGGAGGTGGCC  
TACATTGGCACCAGCACCCAGCACAAGGCGGCGGTGATGCTGTGCTTGGCGGCGGGCAAGCCGTTT  
TGTGCGAGAAGCCACGGGCGTGAACGCGGCGGAAGTTCGCGAGATGGTTCGCGGAGGCCCGATCCCGAGC  
CCTCTTCCTTATGGAGGCCATCTGGACCCGCTTCTTCCCTGCCTCCGAGGCTCTGAGGTCTGTTTTGGCC  
CAGGGAATCTAGGAGACCTCCGGTGGCTCGGGCAGAATTTGGGAAGAATCTCATCCACGTTCCCGGG  
CCGTAGACCGGGCCAGGCTGGGGGGCCCTGCTGGACATCGGCATCTACTGTGTCCAGTTCACCTCCAT  
GGTCTTTGGAGGGCAGAAGCCAGAGAAGATTTCTGTCGTGGGAAGGCGTCATGAAACAGGTGTGGATGAC  
ACTGTCACGGTGTCTCTGCAGTACCCAGGGGAGGTCCATGGCAGCTTACCTGCAGCATCACCGTGCAGC  
TCTCCAACACGGCCTCCGTGAGCGGCACCAAGGCGATGGTACAGCTCCTCAACCCTGCTGGTGGCCGAC  
CGAGCTGGTGGTGAAGGGGGAGCATAAAGGAGTTCGCGTGCCTCCCAAGGACTCCAAAGGACTGCAATTTGAC  
AACGGGGCAGGCATGAGTTATGAGGCCAAGCACGTCTGGGAGTGCCTACGCAAGGATGAAAGGAAAGTC  
CTGTGATTCCTGTGCGAAAGTGAGCTCCTGGCTGACATCCTGAAGAGGTGAGGAAGGCCATTGGAGT  
CACCTTCCCAAGACAACGC

AG**CGGACCG**ACGCGTACGCGGCCGCTCGAG - GFP Tag - GTTTAA



[View online »](#)

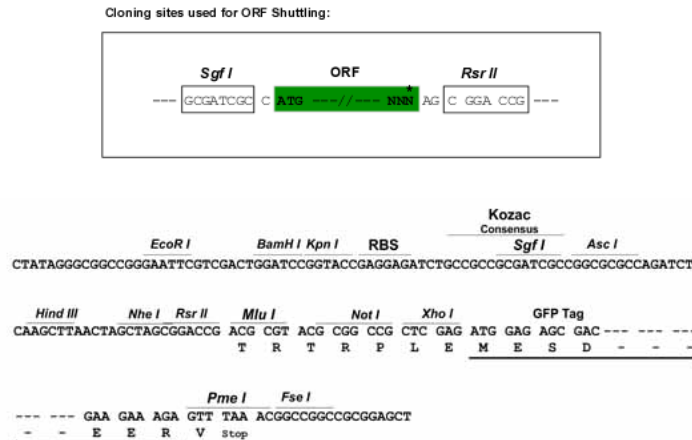
**Protein Sequence:** >RG207537 representing NM\_014475  
Red=Cloning site Green=Tags(s)

MALRWGIVSVGLISSDFTAVLQTLPRSEHQVVAARDLSRAKEFAQKHDIPKAYGSYEELAKDPSVEVA  
 YIGTQHPQHKAAYMLCLAAGKAVLCEKPTGVNAAEVREMVAEARSRALFLMEAIWTRFFPASEALRSVLA  
 QGTLGDLRVARAEFGKNLIHVPRAVDRAQAGGALLDIGIYCVQFTSMVFGGQKPEKISVVGRRHETGVDD  
 TVTVLLQYPGEVHGSFTCSITVQLSNTASVSGTKGMVQLLNPCWCPTLVVKGEHKEFPLPPVKDCNFD  
 NGAGMSYEAKHVWECLRKGMKESPVIPLESELLADILEEVKKAIGVTFFPQDKR

SGPTRRRLE - GFP Tag - V

**Restriction Sites:** SgfI-RsrII

**Cloning Scheme:**



**ACCN:** NM\_014475

**ORF Size:** 1002 bp

**OTI Disclaimer:** The molecular sequence of this clone aligns with the gene accession number as a point of reference only. However, individual transcript sequences of the same gene can differ through naturally occurring variations (e.g. polymorphisms), each with its own valid existence. This clone is substantially in agreement with the reference, but a complete review of all prevailing variants is recommended prior to use. [More info](#)

**OTI Annotation:** This clone was engineered to express the complete ORF with an expression tag. Expression varies depending on the nature of the gene.

**Components:** The ORF clone is ion-exchange column purified and shipped in a 2D barcoded Matrix tube containing 10ug of transfection-ready, dried plasmid DNA (reconstitute with 100 ul of water).

**Reconstitution Method:**

1. Centrifuge at 5,000xg for 5min.
2. Carefully open the tube and add 100ul of sterile water to dissolve the DNA.
3. Close the tube and incubate for 10 minutes at room temperature.
4. Briefly vortex the tube and then do a quick spin (less than 5000xg) to concentrate the liquid at the bottom.
5. Store the suspended plasmid at -20°C. The DNA is stable for at least one year from date of shipping when stored at -20°C.

**RefSeq:** [NM\\_014475.4](#)

**RefSeq Size:** 1098 bp

**RefSeq ORF:** 1005 bp

**Locus ID:** 27294

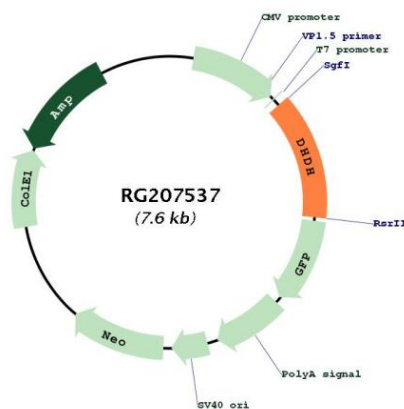
**UniProt ID:** [Q9UQ10](#)

**Cytogenetics:** 19q13.33

**Protein Pathways:** Metabolism of xenobiotics by cytochrome P450

**Gene Summary:** This gene encodes an enzyme that belongs to the family of dihydrodiol dehydrogenases, which exist in multiple forms in mammalian tissues and are involved in the metabolism of xenobiotics and sugars. These enzymes catalyze the NADP1-linked oxidation of transdihydrodiols of aromatic hydrocarbons to corresponding catechols. This enzyme is a dimeric dihydrodiol dehydrogenase, and it differs from monomeric dihydrodiol dehydrogenases in its high substrate specificity for trans-dihydrodiols of aromatic hydrocarbons in the oxidative direction. [provided by RefSeq, Jul 2008]

## Product images:



Circular map for RG207537