

Product datasheet for **RG207531**

Cullin 7 (CUL7) (NM_014780) Human Tagged ORF Clone

Product data:

Product Type:	Expression Plasmids
Product Name:	Cullin 7 (CUL7) (NM_014780) Human Tagged ORF Clone
Tag:	TurboGFP
Symbol:	CUL7
Synonyms:	3M1; CUL-7; dJ20C7.5; KIAA0076
Mammalian Cell Selection:	Neomycin
Vector:	pCMV6-AC-GFP (PS100010)
E. coli Selection:	Ampicillin (100 ug/mL)
ORF Nucleotide Sequence:	>RG207531 representing NM_014780 Red=Cloning site Blue=ORF Green=Tags(s)

TTTTGTAATACGACTCACTATAGGGCGGCCGGAATTCGTCGACTGGATCCGGTACCGAGGAGATCTGCC
GCC**CGATCGCC**

ATGGTGGGAGAACTCCGCTACAGGGAATTCAGGGTGCCCTGGGGCCGGCTTACATGCCTATCCTGATG
AGCTGATCCGCCAGCGCTGGGCCATGATGGGCATCCTGAGTACCAGATCCGTTGGCTCATCCTGCGGCG
TGGCGATGAGGGGACGGGGCTCTGGCCAAGTGGACTGCAAGGCTGAGCACATCCTGCTGTGGATGTCC
AAGGATGAGATCTATGCCAACTGCCACAAGATGCTGGGCGAGGATGGCCAGGTCATCGGGCCCTCCCAGG
AGTCTGCAGGGGAGGTTGGGGCCCTGGACAAATCTGTGCTGGAGGAGATGAAACCGACGTGAAGTCCCT
CATTGAGAGGCCCTTCGGCAGCTGGAGGAGTGTGGGGCACTATCCCTCCTGCTCCTACTTCACT
GTCCACGTGCTCAGCGCCTATGCCAGCATTGAGCCCTCACTGGAGTATTCAAGGACCAAGGGTCTCGG
ACTTGCTCATGCACATGTTGAGTAGTCCTGATTATCAGATTTCGCTGGAGTGCAGGCCGGATGATACAAGC
CCTGTCTCCCATGACGCTGGGACCCGGACTCAGATCCTTCTGTCACTGAGCCAACAAGAAGCCATTGAG
AAACACCTGGATTTTGACAGCCGCTGTGCTCTGCTAGCACTGTTTGCACAGGCCACGCTCTCTGAACACC
CCATGTCTTTGAGGGCATTTCAGCTACCACAGTCCCAGGAAGGGTGCTCTTCTCCCTGGTGAAGCGGTA
TTTGCATGTCACCTCGCTCCTGGATCAGCTGAACGACAGTGTGCGGAGCCAGGAGCCAGAACACCTCT
GCTCCTGAGGAGTTGAGTGGGGAGAGGGTCAACTGGAGCTGGAGTTGAGTATGGCCATGGGCACCCTGA
TCTCGGAGCTGGTGAAGCCATGCGCTGGGACCCAGGCCTCAGACAGACCAAGGAGCTCAGCACGGTCCCC
CGTTCATCTTCCAGCCTCAGCTGGCAGATGTGAGCCAGGGCTCCCGCTGCCAGGCTCAGCCCTCC
TTCAGGAGGTCAAGACGTTTTTCGCCCTCGTTCTGAGTTCGCAAGTGGCAATACCTATGCTTTGTATGTGC
GGGACACACTGCAGCCGGGGATGCGAGTGGGATGCTGGATGATTATGAGGAGATCAGTGCCGGGGATGA
GGGCGAGTTTCGGCAGAGCAACAACGGTGTGCCTCCTGTGCAGGTATTTGGGAGTCAACAGGCCGACC
TATTGGGTGCACTGGCACATGCTGGAGATCTTGGGCTTTGAGGAAGACATTGAGGACATGGTTGAGGCTG
ATGAGTACCAAGGGGAGTGGCCAGTAGAGTCTGGGTAGAGCCCTGCCTGCCTGGCGCTGGAGGCCAT
GACAGAATCTATGCTGTGCCTATGTGCTGCCTGAGGATGAGGACACTGAGGAGTGTGAACACCTGACC



[View online »](#)

CTGGCTGAGTGGTGGAACTCCTCTTTCATCAAGAAGCTGGATGGACCTGACCATCAGGAGGTTCTCC
 AGATCCTCCAGGAGAACCTAGATGGGGAGATTCTGGATGATGAGATCCTAGCTGAACTGGCCGTGCCCAT
 AGAATTGGCCCAGGACTTGTCTGACTCTGCCACAGCGACTCAATGACAGTGCCCTCAGGGACCTGATC
 AACTGCCATGTCTACAAGAAGTATGGGCTGAAGCCCTAGCAGGGAAACCAAGCCTACCCATCCCTTCTAG
 AAGCCCAAGAAGATGTCTCTGCTAGACGCGCAGGCCAGGCTAAGGACTCAGAAGATGCAGCCAAAGT
 GGAAGCAAAAAGAACCCCATCTCAGAGTCCCAACTCCCCTGCAGCGTCTGGTGGAGGGTTATGGTCCA
 GCTGGGAAAATCCTCTGGATCTAGAGCAAGCCCTCAGCTCAGAGGGGACCCAGGAGAACAAGGTCAAGC
 CACTCCTGCTGCAGCTGCAGCGGCAGCCGAGCCCTTCTGGCACTGATGCAGAGCCTGGACACTCCGGA
 GACTAACAGGACCCTGCACCTGACTGTGCTGAGAATCCTGAAGCAGCTGGTGGACTTCCCGAGGCACTG
 CTGCTCCCTGGCACGAGGCCGTGGATGCCTGCATGGCCTGCCTGCGGTCCCAAACACTGATCGAGAGG
 TGCTCCAGGAACTGATTTTCTTCTGCACCGCCTGACCTCAGTGAGCAGGGACTATGCCGTGGTCTGAA
 TCAGCTGGGAGCAAGAGACGCTATCTCCAAGGCCCTGGAAAAGCAGCTGGGAAAGCTGGAGCTGGCTCAG
 GAGCTGCGGGACATGGTGTCAAGTGTGAGAAGCATGCCACCTCTACCGCAAACATCACCAACATCC
 TGGGAGGCTGCATCCAGATGGTGTGGCCAGATCGAAGACCACAGACGAACCCACCAACCCATCAACAT
 CCCTTTCTTTGATGTGTCTCAGATACCTGTGCCAGGGCTCCAGTGTGGAAGTGAAGGAGGACAAGTGC
 TGGGAGAAGTGGAGGTGTCTCCAACCCGACCGGGCCAGCAAGCTGACGGACCAACCCCAAGACCT
 ATTGGGAGTCCAACGGCAGCGCCGGCTCCCACTACATCACCTGCACATGCGCCGGGGCATCCTCATCAG
 GCAACTGACTCTGCTTGTGGCTAGTGAGGACTCGAGTTACATGCCGGCCCGAGTGGTGGTGTGCGGGGT
 GATAGCACTAGCTCTTTCACACGGAACCTAACTCGGTGAATGTGATGCCCTCTGCCAGCCGGGTGATCC
 TCCTGGAGAACCTGACCCGCTTCTGGCCATCATCCAGATCCGCATAAAGCGCTGCCAGCAGGGTGGCAT
 TGATACGCGCATTGGGGGTTAGAGATCCTAGGCCCAAGCCACGTTCTGGCCAGTGTTCGGGAGCAG
 CTCTGTGTCACACACGCTCTTCTACATGGTTTCGGGCACAGCCCTGGAGCCAGGACATGGCAGAGGACC
 CGAGGACCTCCTGCACCTGAGTTCTAGACTCAACGGTGTCTGCGCCAGGAGCAGAATTTGCTGCCCG
 CTCTCCTGATGACGAGGCTGCCAAGCTCTGGGCAAGACCTGCTGGGAGGCCCTGGTCAAGCCCGTG
 GTGCAGAACATCACCTCCCTGATGAGGATGGCATTAGCCCCCTGGGTTGGCTGTGGACCAGTACCTGG
 AGTGTGAGGAAAGTGTCTTCAACCCCAAGAGCCGCGGCCAGCTTTCTTCTCGCGGTGCGCCGTCTCAC
 TCACCTGCTGGTGCATGTGAGCCCTGTGAGGCACCCCTCCTGTGGTGGCCACTCCTCGGCCAAAGGC
 AGAAACAGAAGCCAGACTGGAGCTCCTGGCTACCCGGGGCCTTCAAGCAGCATCATGAGAACTGGA
 CGCGCTGTTGGCGGGCCGTGGTGGAGAAGCAGGTGAACAATTTTCTGACCTATCCTGGCGGGATGATGA
 CTTTGTGCCACGCTACTGTGAGCACTTAAATATTCTGCAGAACTCAAGCTCTGAACTGTTGGCCCTCGG
 GCAGCCTTCTTGTGGCGCTGCAAAATGGCTGTGCGGGAGCCTTGTGAACTCCCTTTTCTCAAAGCTG
 CCACGTGAGTGAGCAGTTCCGCCGGCACATTGACCAGCAGATCCAGGGCAGCCGGATCGGTGGAGCCCA
 GGAAATGGAGAGGCTGGCACAGCTGCAGCAATGCCTGCAAGCTGTCTGATTTTCTCCGGCTTGGAGATA
 GCCACCACTTTTGTGAGCATTATTACCAGCACTACATGGCGGACCGTCTCCTGGGCGTGGTCTCGAGCTGGC
 TGGAGGGGGCCGTGCTGGAGCAGATCGGTCCCTGCTTCCCAACCCGCTCCCCAGCAGATGTTGCAGAG
 CCTGAGCACCTTAAGGAGCTGCAGCGCAGTTCCACGTCTACCAGCTCCAGCAGCTGGATCAGGAACTC
 CTGAAGCTGGAGGATACAGAGAAGAAAAACAGGTGGGCTTGGGGCCAGTGGCAAGGAGCACAAGAGCG
 AGAAGGAAGAGGAAGCTGGGGCAGCAGCAGTGGTGGATGTGGCGGAGGGAGAGGAGGAAGAGGAGGAGAA
 TGAGGACCTCTACTATGAAGGGCAATGCCAGAAGTGTCTGTGCTTGTCTGTCCCGCACTCTGGCCT
 GTTGCCTCAATCTGCCACACACTGAACCCAGAACCTGCCTGCCCTCTACCTGAGGGGCACTTTGAACA
 GATACTCCAATTCTACAACAAGAGTGCAGGCCACCTGCCCTTGTGAGCGAGGCTCACAGAGGCGACTGCA
 GTGGACGTGGCTGGGCTGGGCTGAGCTGCAGTTTGGAAACCAGACCCTGCATGTGTCCACCGTGCAGATG
 TGGCTACTGCTGTATCTCAACGACCTGAAGGCGGTCTCTGTGGAGAGTCTGCTGGCGTTCTCAGGGCTCT
 CCGCAGACATGCTCAATCAGGCGATTGGGCCCTCACCTCTTCAAGAGGCCCCCTGGACCTTACAGAGCA
 AAAGGATATACCAGGAGGGTCTCAAGATTCGAGATGGCAGCAAGGAACCCAGGTGAGATGGGACATT
 GTGCGGCTCATCCACCTCAGACGTACCTGCAAGCTGAGGGTGAAGACGGCCAGAACTTGGAGAAGAGAC
 GGAATCTTCTGAACTGCCTCATCGTCCGAATCCTCAAGGCCATGGAGATGAGGGGCTGCACATTGACCA
 GCTTGTCTGTCTGGTGTGGAGGCTTGGCAGAAGGGCCGTGTCTCTCCAGGGGTTTGGTACGACGCTT
 GGTAAAGGGTCTGCATGCAGCAGCACTGACGTCTCTCTGCATCCTACACCTCTGGGCAAGGGCACGC
 TGAGACGCCATGACGACCGGCCAGGTGCTGTCTATGCAGTCCCTGTGACTGTGCATGGAGCCTCACAC
 TGAGTCCCTGAACCCAGGCTCCTCAGGCCCAACCCACCCCTCACCTTCCATACCTACAGATTGCTCTC
 CGGGGTGTGCCCTATGCCTCCTGCACTGCCACCCAGAGCTTCTTACCTCCGG

ACGCGTACGCGGCCGCTCGAG – GFP Tag – GTTTAA

Protein Sequence:

>RG207531 representing NM_014780
 Red=Cloning site Green=Tags(s)

MVGELRYREFRVPLGPGLHAYPDELIRQVRVGHDPHEYQIRWLIILRRGDEGDGGSGQVDCCKAEHILLWMS
 KDEIYANCHKMLGEDGQVIGPSQESAGEVGALDKSVLEEMETDVKSLIQRALRQLEECVGTIPPAPLLHT
 VHVLSAYASIEPLTGVFKDPRVLDLLMHMLSSPDYQIRWSAGRMIQALSSHDAGTRTQILLSSLQQEAIE
 KHLDFDSRCALLALFAQATLSEHPMSFEGIQLPQVPGRVLSLVKRYLHVTSLLDQLNDSAAEPGAQNTS
 APEELSGERGQLELEFSMAMGTLISELVQAMRWDQASDRPRSSARSPGSIQFQPLADVSPGLPAAQAQPS
 FRRSRRFRPRSEFASGNTYALYVRDTLQPGMRVRMLDDYEEISAGDEGEFRQSNNGVPPVQVFWESTGRT
 YVWHHMLEILGFEEDIEDMVEADEYQGAVASRVLGRALPAWRWRPMTLEYAVPYVLPEDEDTECEHLT
 LAEWWELLFFIKKLDGPDHQEVLQILQENLDGEILDDEILAELAVPIELAQDQLLTLRQLNDSALRDLI
 NCHVYKKGPEALAGNQAYPSLLEAQEDVLLDAQAQAKDSEDAKVEAKEPPSQSPNTPLQRLVEGYGP
 AGKILLDLEQALSSEGTQENKVKPLLLQLQRQPFLALMQSLDTPETNRTLHLTVLRILKQLVDFPEAL
 LLPWHEAVDACMACLRSPNTDREVLQELIFFLHRLTSVSRDYAVVLNQLGARDAISKALEKHLGKLELAQ
 ELRDMVFKCEKHAHLRKLITNILGGCIQMVLGQIEDHRRTHQPINIPFFDVFLRYLCQGSSVEVKEDKC
 WEKVEVSSNPHRASKLTDHNPITYWESNGSAGSHYITLHMRRGILIRQLTLLVASEDSSYMPARVVVCGG
 DSTSSLHTELNSVNVMPASRVILLENLTRFWPIIQIRIKRCQQGGIDTRIRGLEILGPKPTFWPVFREQ
 LCRHTRLFYMVRAQAWSQDMAEDRRSLHLSSRLNGALRQEQNFADRFLPDDEAAQALGKTCWEALVSPV
 VQNTITSPDEDGISPLGWLLDQYLECQEA VFN PQSRGPAFFSRVRLTHLLVHVEPCEAPPPVATPRPKG
 RNRSHDWSLATRGLPSSIMRNLTRCWRAVVEKQVNNFLTSSWRDDDFVPRYCEHFNILQNSSSELFGPR
 AAFLLALQNGCAGALLKLPFLKAAHVSEQFARHIDQIQGSRIGGAQEMERLAQLQQCLQAVLIFSGLEI
 ATTFEYHYQHVMADRLLVGVSSWLEGA VLE QIGPCFPNRLPQQMLQSLSTSKELQRQFHVYQLQQLDQEL
 LKLEDTEKKIQVGLGASGKEHKSEKEEEEAGAAVVDVAE GEEEEEEENEDLYYEGAMPEVSVLVLSRHSWP
 VASICHTLNPRTCLPSYLRGTLNRYSNFNKQSQSPALERGSQRRLQWTWLGWAE LQFGNQTLHVSTVQM
 WLLLYLNDLKAVSVESLLAFSGLSADMLNQAIGPLTSSRGLDLHEQKDI PGGVLKIRDGSKEPRSRWDI
 VRLIPPQTYLQAEGEDGQNLKRRNLLNCLIVRILKAHGDEGLHIDQLVCLVLEAWQKGPCPPRGLVSSL
 GKGSACSSTDVLSCILHLLGKGLRRHDDRPQVLSYAVPVTVMEPHTESLNP GSSGNPPLTFHTLQIRS
 RGVPIYASCTATQSFSTFR

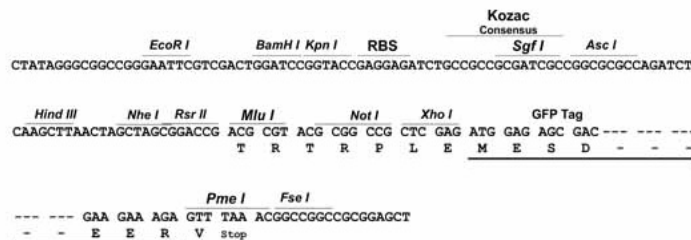
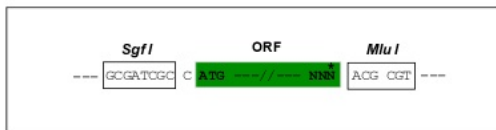
TRTRPLE – GFP Tag – V

Restriction Sites:

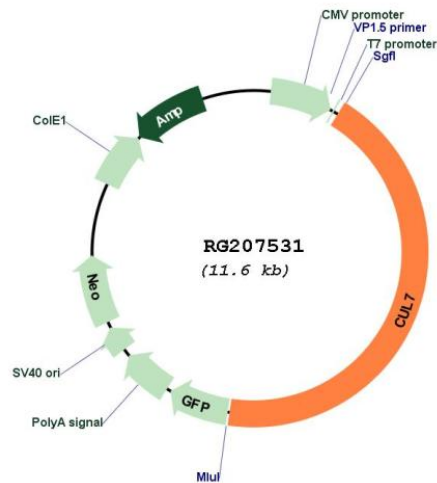
SgfI-MluI

Cloning Scheme:

Cloning sites used for ORF Shuttling:



Plasmid Map:



ACCN: NM_014780

ORF Size: 5094 bp

OTI Disclaimer: The molecular sequence of this clone aligns with the gene accession number as a point of reference only. However, individual transcript sequences of the same gene can differ through naturally occurring variations (e.g. polymorphisms), each with its own valid existence. This clone is substantially in agreement with the reference, but a complete review of all prevailing variants is recommended prior to use. [More info](#)

OTI Annotation: This clone was engineered to express the complete ORF with an expression tag. Expression varies depending on the nature of the gene.

Components:	The ORF clone is ion-exchange column purified and shipped in a 2D barcoded Matrix tube containing 10ug of transfection-ready, dried plasmid DNA (reconstitute with 100 ul of water).
Reconstitution Method:	<ol style="list-style-type: none">1. Centrifuge at 5,000xg for 5min.2. Carefully open the tube and add 100ul of sterile water to dissolve the DNA.3. Close the tube and incubate for 10 minutes at room temperature.4. Briefly vortex the tube and then do a quick spin (less than 5000xg) to concentrate the liquid at the bottom.5. Store the suspended plasmid at -20°C. The DNA is stable for at least one year from date of shipping when stored at -20°C.
RefSeq:	<u>NM_014780.5</u>
RefSeq Size:	5520 bp
RefSeq ORF:	5097 bp
Locus ID:	9820
UniProt ID:	<u>Q14999</u>
Cytogenetics:	6p21.1
Protein Pathways:	Ubiquitin mediated proteolysis
Gene Summary:	The protein encoded by this gene is a component of an E3 ubiquitin-protein ligase complex. The encoded protein interacts with TP53, CUL9, and FBXW8 proteins. Defects in this gene are a cause of 3M syndrome type 1 (3M1). Two transcript variants encoding different isoforms have been found for this gene. [provided by RefSeq, Dec 2009]