

Product datasheet for **RG207529**

ZNF646 (NM_014699) Human Tagged ORF Clone

Product data:

Product Type: Expression Plasmids
 Product Name: ZNF646 (NM_014699) Human Tagged ORF Clone
 Tag: TurboGFP
 Symbol: ZNF646
 Mammalian Cell Selection: Neomycin
 Vector: pCMV6-AC-GFP (PS100010)
 E. coli Selection: Ampicillin (100 ug/mL)
 ORF Nucleotide Sequence: >RG207529 representing NM_014699
 Red=Cloning site Blue=ORF Green=Tags(s)

TTTTGTAATACGACTCACTATAGGGCGGCCGGAATTCGTCGACTGGATCCGGTACCGAGGAGATCTGCC
 GCC**CGATCGCC**

ATGGAGGACACCCCCCTCACTCAGCTGCTCCGACTGTCAGCGCCACTTCCCAGCCTCCCAGAGCTCT
 CTCGGCACCGAGAAGTGTCCATCCATCTCCCAACCAGGACAGTGAGGAGGCTGACAGCATCCCTCGGCC
 CTACCGTTGTGAGCAGTGTGGCGGGGCTACCGTCACCCCGGGAGCCTGGTTAACCATCGTCGGACCCAC
 GAGACTGGCCTTTTCCCCTGTACCACCTGTGGCAAGGACTTCTCCAATCCCATGGCTCTCAAGAGCCATA
 TGAGGACACATGCTCCTGAGGGCCCGCAGGCACAGGCCACGCCCCAAGGAAGCCACTCCACACT
 CCAGGGTGAGACGGTGTCCACTGACTCCTGGGGCCAAAGGCTTGGCTCTAGTGAAGGCTGGGAAAACAG
 AAAAAACATACAGAAGAGACACCTGACTGTGAATCTGTACCTGACCCAGGGCAGCTTCGGGTACGTGGG
 AAGATCTGCCACCAGACAAAGAGAAGGCTTGGCAAGCCACCCAGGTCCTGAGGATGGTGCAGACGGCTG
 GGGACCCCTCCACTAACTCTGCCAGAGCCCTCCTCTCCCATCCCAGCCAGCAGCCTTCTTAGCAACTTG
 GAACAGTATCTGGCTGAATCAGTAGTGAATTCACAGGGGGCCAGGAGCCACCCAGTCCCCTCTGCTG
 AGGAGGAGCGGGGTACAAATGTAGTCAGTGTGGCAAGACCTACAAGCACGCCGGGAGCCTACCAACCA
 CCGCCAGAGCCACAGCTGGGCATCTACCCTGTGCCATCTGTTTCAAGGAGTTCTAACCTCATGGCT
 CTGAAGAACCCTCTCGACTGCATGCCAGTATCGGCCTTACCCTGTCCCCTGCCCCGCTGTCTTCC
 GGCTCCCCCGGAGCTGCTGGAACACCAGCAGTCCCATGAGGGTGAAGGCAAGGACCCAGCTGGGAGGA
 GAAAGGGATGCCACCACCAATGGGCACACAGATGAGAGCAGCCAGGACCAGCTCCCCAGTGCACAGATG
 CTGAATGGCTCTGCGGAGCTCAGCACCTCTGGGGAGCTGGAGGACAGTGGCCTGGAGGAATACCGCCCT
 TCCGCTGTGGGGACTGTGGCCGTAATACCGCCATGCTGGGAGCCTCATCAACCATCGAAAGAGCCACCA
 GACAGGTGTCTACCCCTGCTCACTCTGTCTAAGCAGTGTTCATGCGGCTGCCCTCAAAAACCATGTG
 CGGGCTCATCACAGGCCAGGCAAGGAGTTGGGAAAAATGGGCAGCCATCAGTCCCACCAGCTCCCCTGC
 TGCTGGCTGAGACCACCCACAAAGAGGAAGAGGACCCACCACCCTGGACCATCGGCCATCGGACTGGA
 CAGTGAGTGTGGTCTGTGCTTACCGCCACCGGGGAGCCTGGTGAACCATCGCCACAGCCATCGGACTGGA
 GAGTACCAGTGTCACTCTGTCCCAGCAAGTACCCCAATCTCATGGCCCTGCGCAACCCAGCTGCGGGTAC
 ATTGAAGGCTGCTCGCCGAAGTGCAGACATCGGGGCTGAGGGTGCCCCAGCCACCTCAAGGTAGAAT



[View online »](#)

CCCGCCTGACCCAGTGGAGGCAGAGGCAGCCCCGCACACAGATCAGGACCATGTGTGCAAACATGAAGAA
 GAGGCCACGGACATCACCCAGCAGCAGACAAGACAGCAGCACATATCTGTAGCATCTGTGGGCTGCTCT
 TTGAAGACGCTGAGAGCCTTGAACGTATGGCCTGACTCATGGGGCAGGGGAAAAGGAAAATAGCAGAAC
 AGAGACCACAATGTCACCTCCTAGGGCCTTTCCTGCCGAGACTGTGAAAGAGCTATCGCCACTCAGGC
 AGCCTTATCAACCACAGGCAGACCCACCAGACAGGAGACTTCAGTTGTGGGGCTGTGCCAAGCACTTCC
 ACACCATGGCTGCCATGAAGAACCATTGCCCGGCACAGTCGGCGGGGAGCAGGGCCATCGGAAGCG
 GGCTGGCGGTGCCAGCGTGGGAGAGAAGCCAACTCCTGGCAGCGGAGAGCTGGACCCGGGAGCTAGAA
 GACAATGAAGGCCTGGAGTCTCCCAAGACCCTTCAGGGGAAAGTCTCATGGGGCTGAAGGCAACCTGG
 AAAGTGATGGGGACTGTTTGCAGGCTGAATCTGAAGGGGACAAATGTGGGCTTGAGAGGGATGAGACCCA
 TTTCCAGGGTGATAAAGAGAGCGGAGGCACTGGGGAAGGACTGGAAAGGAAGGATGCCAGTTTACTTGAC
 AACTTGGACATCCCAGGTGAGGAAGGTGGTGGCACTCACTTCTGCGATAGCCTCACTGGGGTGGATGAAG
 ACCAGAAGCCAGCCACTGGCCAACCAACTCCTTCCCACTCTGCCAATGCTGTCACTGGCTGGCAGGC
 TGGGGCCGCTCACACATGCTGACTGTGGCATTCTTCCCACTGCCACTGGCCTGCTGAGCCACAGG
 CCCTGCCACCCACAGGCATCTATCAGTCTCCCTCTGCCGAAGGAGTTTGACTCTGCTGCTGCCCTCC
 GCAGCCACTTCCAGAACCATAGGCTGGGGAGGCGACCTCAGCACAGCCTTCTCTGCTGCTGCTGTGG
 CATGATCTTCCCTGGCGGGCTGGCTACAGGCTTCACCGCGCCAGGCCACAGCTCCTCTGGCATGACT
 GAGGGCTCAGAGGAGGAGGGGAAGAGGAAGGAGTGGCAGAGGCAGCCCTGCACGCAGTCCACCCTGC
 AGCTCTCGAAGCAGAGCTGCTGAATCAGCTGCAGCGGAGGTGGAAGCCTGGACAGTGCAGGGTATGG
 GCACATCTGTGGCTGCTGTGGTCAAGCTACGATGACCTGGGGAGCCTGGAGCGTACCACCAAAGTCA
 AGTTCTGGGACTACTGCAGACAAGGCTCCAGCCCTTGGGAGTGGCAGGTGATGCCATGGAGATGGTGC
 TGGACAGTGTCTGGAGGACATAGTGAATCTGTCTCTGGAGAGGGTGGAGATGCCAAGTCTCAAGAGG
 AGCAGGCACCCCTTGGGAGACAGCCTCTGCATCCAGGTGGGAAAGTTTGTGGAGGCTCAGCCCGC
 CCCTCCGCTGCAACCAGTGTGGCAAGACTATGCCATGGGGCAGCCTGGTGAACACCCGCAAGATCC
 ACCAGACTGGAGACTTCTCTGCCCTGTCTGCCCTGCTACCCCAACCTGGCTGCTACCGTAAATCA
 TCTGCGGAACCCTCGCTGCAAGGCTCTGAGCCCCAGGTTGGGCCATCCCAGAGGCAGCAGGTAGC
 AGTGAGCTGCAGGTTGGGCCATCCCAGAAGGAGGCAGCAACAAGCCCCAGCACATGGCAGAGGAGGGC
 CGGGGCAAGCAGAAGTCGAGAAGCTCCAGGAAGAACTTAAAGTGGAGCCCTGGAGGAAGTGGCCAGGGT
 GAAAGAAGAGGTGTGGGAGGAGACCCTGTGAAGGGGAGGAGATAGAGCCAGGCTGGAGACTGCCGAG
 AAGGGCTGCCAGACTGAAGCCAGCTCTGAGCGCCCTTCACTGCGAGGTGTGTGGCCGATCCTACAAGC
 ACGCCGGCAGCCTCATCAACCACCGGCAGGCCACCAGACCGGCCACTTTGGCTGTGAGGCTGCTCCAA
 GGGCTTCTCAAACCTCATGTCCCTCAAGAACCACCGGCGCATCCATGCAGATCCCGACGTTTCCGCTGC
 AGCGAGTGTGGGAAGGCCTTCCGCTGCCGAAACAGCTGGCCAGCCACCAGCGGGTCCACATGGAACGGC
 GTGGGGTGGGGGCACCCGAAAGGCGACTCGGGAAGATCGGCCCTTCCGCTGTGGGCAGTGGGGCGGAC
 CTATCGCCACGGCGCAGCCTCCTGAACCACCGGCGCAGCCACGAGACGGGCCAGTACAGCTGCCCCACC
 TGCCCCAAGACCTACTCCAACCGCATGGCCCTGAAGGACCACCAGAGGCTGCACTCAGAGAATCGGGCG
 GACGGCTGGACGGTCCAGGCGCACAGCTGTGCGTTGCGCCCTCTGTGGCCGAGCTTCCCTGGCCGGGG
 ATCTTTGGAGCGGCACCTGCGGGAGCATGAGGAGACAGAAAGGGAGCCAGCCAATGGCCAGGGAGGCTG
 GATGGCACAGCGCCAGTGAAGGCAACCTGACTGGCAGCCAGGGACTAGAGACCAATGGGTGGTGTGCTG
 AGCCAGTACCCCACTTGGAGGATGGAGTCCCAAGGCCAGGGGAGCGCAGTCAAGGCCCAATCAGGGCAG
 AAGCTCAGAAGCCCCAGAGCCACTGTCTGGGGTGCAGGGAAGGCAGGTGGGTGGCCGCTAGGTGGGGGA
 CTGGGGAATCATAGTGGAGGCTGGGTTCTCAGTTCCTAACTAGTGCAGAGGAGCCAGAGGACAGTGTCC
 ACAGGAGTCTTGCCACGCTGGTACTGCCAGCTCAATGGACCTACTCTGAGTCACATGGATAGCTGGGA
 CAACAGAGACAACAGCTCTCAGTGCAGCCAGGGAGCCACTCCTCTTGCAGCCAGTGTGGCAAGACTTAC
 TGCCAGTCAGGCAGCCTTGAACCACAACACCAACAAGACAGACCGACACTATTGCTGCTGCTGCCA
 AGGAGTTCTTAAATCCTGTGGCCAAAAGAGCCACAGCCACAACCACATAGACGCCAGACCTTTGCTG
 TCCTGACTGTGGCAAAGCCTTTGAGTCCACCAGGAAGTGGCCAGCCACCTGCAGGCTCATGCCCGGGC
 CACAGCCAGGTGCCAGCCAGATGGAGGAGGCCAGAGATCCCAAAGCCGGGACTGGGGAGGACCAGGTGG
 TTCTCCCTGGTCAAGGGAAGGCCAGGAGGCCCATCAGAAACCCCAAGGCCAGGAGAGAGTGTGGA
 GAGAGCCAGGGGAGGACAAGCGGTGACGTCCATGGCGGCTGAGGACAAGGAGCGGCCCTTCCGCTGCACC
 CAGTGGGGCGCTCCTACCGCATGCTGGCAGCCTGCTGAACCACCAGAAGGCCACACCACAGGGTTGT
 ACCCGTGTCTCCTCTGTCCAAACTTCTCCCTAACCTGTGTCTTAAAGAACACAGCAGGACCCACAC
 GGACCCAAAGCGCACTGCTGCAGCATCTGTGGCAAGGCCTTTCGGCAGCTGCCCGCTGGAGGGCCAC

GGGCGGTCCATGCACCCCGGGAGGGCCCTTTCACCTGCCCCATTGTCCCCGCACTTCCGCCGCCGAA
 TCAGCTTCGTGCAGCACCAGCAGCAGCACCAGGAGGAGTGGACGGTGGCCGGCTCCGGAGCCCCAGTGGC
 ACCAGTGACGGGCAGAGGGGACTTGCCATTGCCCCCTCCACCCACCCCAACGCCCACTCTGGATCCT
 TCACCCAGTGGCTGCAGACCTCAGCTTCTCCCTC

ACGCGTACGCGGCCGCTCGAG - GFP Tag - GTTTAA

Protein Sequence:

>RG207529 representing NM_014699
 Red=Cloning site Green=Tags(s)

MEDTPPSLSCSDCQRHFPSLPELSRHRELLHSPNQDSEEADSIIPRYRCQQCGRGRHPGSLVNHRRTH
 ETGLFPCCTCGKDFSNPMALKSHMRTHAPEGRRRHRPPRKEATPHLQGETVSTDSWGQRLGSSEGWENQ
 TKHTEETPDCEVDPRAASGTWEDLPTRQREGLASHPGPEDGADGWGPSTNSARAPPLIPASSLLSNL
 EQYLAESVNNFTGGQEPQSPPAEEERRYKCSQCCKTYKHAGSLTNHRQSHTLGIYPCAIKFKEFNLMA
 LKNHSRLHAQYRPHYCHPCPRVFRLLPRELLEHQQSHEGERQEPRWEEKGMPTTNGHTDESSQDQLPSAQM
 LNGSAELSTSGELEDGLLEEYRPFRCGDCGRTYRHAGSLINHRKSHQTVYPCSLCSKQLFNAAALKNHV
 RAHHRPRQVGVENGQPSVPPAPLLLAETTHKEEEDPTTLDHRPYKCECGRAYRHRGSLVNHRRSHRTG
 EYQCSLCPKYPNLMALRNHVRVHCKAARRSADIGAEGAPSHLKVELPPDPVEAAAPHTDQDHVCKHEE
 EATDITPAADKTAAHICISICGLLFEDAESLERHGLTHGAGEKENSRTETTMSPPRAFACRDCGKSYRHS
 SLINHRQTHQTGDFSCGACAKHFHTMAAMKNHLRRHSRRRHRKRAGGASGGREKLLAAESWTRELE
 DNEGLESPQDPSGESPHGAEGNLESDGDCLQAESEGDCKGLERDETHFQGDKESSGTGEGLERKDASLLD
 NLDIPGEEGGGTHFCDSLTVGDEDDQKPATGQPNSSHSANAVTGWQAGAHTCSDCGHSFPHATGLLSHR
 PCHPPGIYQCSLCPKEFDSL PALRSHFQNHRRPGEATSAQPFLCCLCGMIFPGRAGYRLHRRQAHS
 SSGMT EGSEEEGEEGVAEAAAPARSPPLQLSEAELLNQLQREVEALDSAGYGHICGCCGQTYDDLGS
 LERHHQSQ SSGTTADKAPSPLGVAGDAMEMVVDVLEDIVNSVSGEGGDAKSQEGAGTPLGDSL
 CIQGGESLLEAQPR PFRCNQCGKTYRHGGSLVNHRIHQTDGDFLCPVCSRCYPNLAAYRNHLRNH
 PRCKGSEPQVGIPEAAGS SELQVGP IPEGGSNKPQHMAEEGPGQAEVEKLEELKVEPLEEVARVKEE
 VWEETTVKGEIEPRLETAE KGCQTEASSERPF SCEVCGRSYKHAGSLINHRQSHQTHGFGCQACSKGF
 SNLMSLKNHRRIHADPRFRCT SECGKAFRLRKQLASHQRVHMERRGGGTRKATREDRPFRCGQC
 GRTYRHAGSLLNHRRSHETGQYSCPT CPKTYSNRMALKDHQRLHSENRRRRRAGRSRRTAVR
 CALCGRSFPGRGSLERHLREHEETEREPANGQGGL DGTAAASEANLTGSQGLETLQGGAE
 PVPHELDGVP RPGERSQSPIRAASSEAPELSWGAGKAGGWVGGG LGNHSGGWVPQFLTRSE
 EPEDSVHRSPCHAGDCQLNGPTLSHMDSWDNDRDNSSQLQPGSHSSCSQCCKTY CQSGSLL
 NHNTNKTD RHYCLLCSKEFLNPVATKSHSHNHIDAQTFACPDCKAFESHQELASHLQAHARG
 HSQVPAQMEEARDPKAGTGEDQVVLPGQGAQEAAPSETPRGPGESVERARGQAVTSMAEDKERPF
 RCT QCGRSYRHAGSLLNHQAHHTGLYPCSLCPKLLPNLLSLKNHSRTHTPDKRHCCSICGKAFRT
 AARLEGH GRVHAPREGPFTCPHCPHFRRRISFVQHQQHQEWTVAGSGAPVAPVTGRGDLPLPP
 PPTPTTLLDP SPQWPADLSFSL

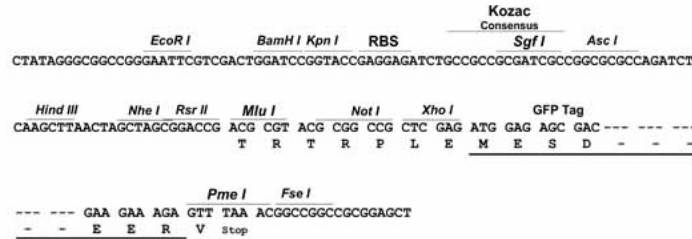
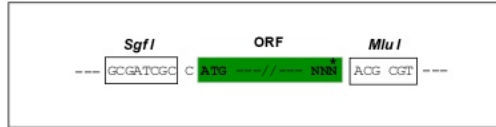
TRTRPLE - GFP Tag - V

Restriction Sites:

Sgfl-Mlul

Cloning Scheme:

Cloning sites used for ORF Shutting:


ACCN: NM_014699

ORF Size: 5496 bp

OTI Disclaimer: The molecular sequence of this clone aligns with the gene accession number as a point of reference only. However, individual transcript sequences of the same gene can differ through naturally occurring variations (e.g. polymorphisms), each with its own valid existence. This clone is substantially in agreement with the reference, but a complete review of all prevailing variants is recommended prior to use. [More info](#)
OTI Annotation: This clone was engineered to express the complete ORF with an expression tag. Expression varies depending on the nature of the gene.

Components: The ORF clone is ion-exchange column purified and shipped in a 2D barcoded Matrix tube containing 10ug of transfection-ready, dried plasmid DNA (reconstitute with 100 ul of water).

Reconstitution Method:

1. Centrifuge at 5,000xg for 5min.
2. Carefully open the tube and add 100ul of sterile water to dissolve the DNA.
3. Close the tube and incubate for 10 minutes at room temperature.
4. Briefly vortex the tube and then do a quick spin (less than 5000xg) to concentrate the liquid at the bottom.
5. Store the suspended plasmid at -20°C. The DNA is stable for at least one year from date of shipping when stored at -20°C.

RefSeq: [NM_014699.4](#)

RefSeq Size: 6221 bp

RefSeq ORF: 5499 bp

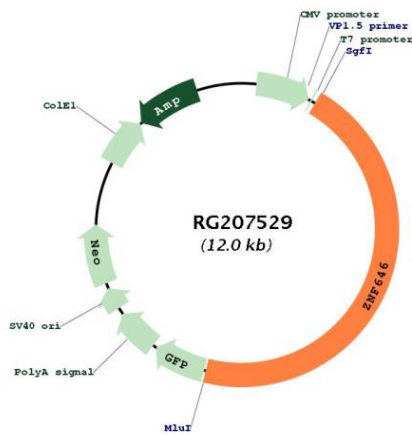
Locus ID: 9726

UniProt ID: [O15015](#)

Cytogenetics: 16p11.2

Gene Summary: May be involved in transcriptional regulation.[UniProtKB/Swiss-Prot Function]

Product images:



Circular map for RG207529