

## Product datasheet for **RG207488**

### **CYP20A1 (NM\_177538) Human Tagged ORF Clone**

#### **Product data:**

Product Type:	Expression Plasmids
Product Name:	CYP20A1 (NM_177538) Human Tagged ORF Clone
Tag:	TurboGFP
Symbol:	CYP20A1
Synonyms:	CYP-M
Mammalian Cell Selection:	Neomycin
Vector:	pCMV6-AC-GFP (PS100010)
E. coli Selection:	Ampicillin (100 ug/mL)



[View online »](#)

**ORF Nucleotide Sequence:**

>RG207488 representing NM\_177538  
 Red=Cloning site Blue=ORF Green=Tags(s)

TTTTGTAATACGACTCACTATAGGGCGGCCGGAATTCGTCGACTGGATCCGGTACCGAGGAGATCTGCC  
 GCC**CGGATCGCC**

ATGTTGGACTTCGCGATCTTCGCCGTTACCTTCTTCTGCTGGCGTTGGTGGGAGCCGTGCTCTACCTCTATC  
 CGGCTTCCAGACAAGCTGCAGGAATCCAGGGATTACTCCAAGTGAAGAAAAAGATGGTAATCTCCAGA  
 TATTGTGAATAGTGGAAGTTTGCATGAGTTCCTGGTTAATTTGCATGAGAGATATGGGCCTGTGGTCTCC  
 TTCTGGTTTGGCAGGCGCCTCGTGGTTAGTTTGGGCACTGTTGATGACTGAAGCAGCATATCAATCCCA  
 ATAAGACATTGGACCCTTTTGAACCATGCTGAAGTCAATTATTAAGGTATCAATCTGGTGGTGGCAGTGT  
 GAGTGAAGAACCATGAGGAAAAATTGTATGAAAATGGTGTGACTGATTCTCTGAAGAGTAACTTTGCC  
 CTCCTCTAAAGCTTTCAGAAGAATTATTAGATAAATGGCTCTCCTACCCAGAGACCCAGCACGTGCCCC  
 TCAGCCAGCATATGCTTGGTTTTGCTATGAAGTCTGTTACACAGATGGTAAATGGGTAGTACATTTGAAGA  
 TGATCAGGAAGTCATTGCTTCCAGAAGAATCATGGCACAGTTTGGTCTGAGATTGAAAAAGGCTTTCTA  
 GATGGGTCACTTGATAAAAAACATGACTCGAAAAAACAATATGAAGATGCCCTCATGCAACTGGAGTCTG  
 TTTTAAGGAACATCATAAAGAACGAAAAGGAAGGAACCTCAGTCAACATATTTTCATTGACTCCTTAGT  
 ACAAGGGAACCTTAATGACCAACAGATCCTAGAAGACAGTATGATATTTCTCTGGCCAGTTGCATAATA  
 ACTGCAAAATTGTGTACCTGGGCAATCTGTTTTTAACCACCTCTGAAGAAGTTCAAAAAAATTATATG  
 AAGAGATAAACCAAGTTTTTGGAAATGGTCTGTTACTCCAGAGAAAAATTGAGCAGCTCAGATATTGTCA  
 GCATGTCTTTGTGAACTGTTGCAACTGCCAACTGACTCCAGTTTCTGCCAGTTTCAAGATATTGAA  
 GGAAAAATTGACCGATTTATTATTCCTAGAGAGACCCTCGTCTTTATGCCCTTGGTGTGGTACTTCAGG  
 ATCCTAATACTTGGCCATCTCCACACAAGTTTGATCCAGATCGGTTTGGATGATGAATTAGTAATGAAAA  
 TTTTCTCACTTGGATTCTCAGGCACACAGGAGTGCCAGAGTTGAGGTTTGCATATATGGTGACCACA  
 GTACTTCTTAGTATTGGTGAAGAGACTGCACCTACTTTCTGTGGAGGACAGGTTATTGAAACAAAGT  
 ATGAACTGGTAACATCATCAAGGAAGAAGCTTGGATCACTGTCTCAAAGAGATAT

**ACGCGT**ACGCGGCCGCTCGAG - GFP Tag - GTTTAA

**Protein Sequence:**

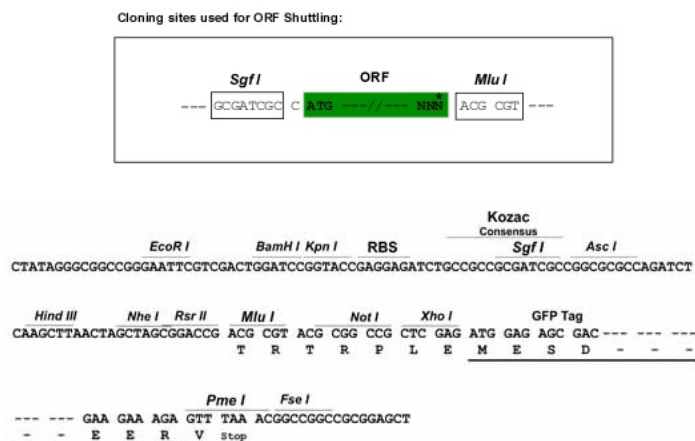
>RG207488 representing NM\_177538  
 Red=Cloning site Green=Tags(s)

MLDFAIFAVTFLLALVGAVLYLYPASRQAAGIPGITPTEEKDGNLPDIVNSGSLHEFLVNLHERYGPVVS  
 FWFGRRLVSLGTVDLKQHINPNKTLDPFETMLKSLRLRYQSGGGSVSENHMRKKLYENGVTDSLKSNFA  
 LLLKLSEELLDKWL SYPETQHVPLSQHMLGFAMKSVTQMVMGSGTFEDDQEVIRFQKNHGTWSEIGKGF  
 DGSLDKNMTRKKQYEDALMQLESVLRNIIKERKGRNFSQHIFIDSLVQGNLNDQQILED SMIFSLASCI I  
 TAKLCTWAICFLTSEEVQKLYEEINQVFGNGPVTPEKIEQLRYCQHVLCEVTRAKLTPVSAQFQDIE  
 GKIDRFIIPRETLVLYALGVVLQDPNTWSPHKFDPDRFDELVMKTFSSLGFSGTQCEPELRFAYMVT  
 VLLSVLVKRLHLLSVEGQVIETKYELVTSSREEAWITVSKRY

**TRTRPLE** - GFP Tag - V

**Restriction Sites:**

Sgfl-MluI

**Cloning Scheme:**


**ACCN:** NM\_177538

**ORF Size:** 1386 bp

**OTI Disclaimer:** The molecular sequence of this clone aligns with the gene accession number as a point of reference only. However, individual transcript sequences of the same gene can differ through naturally occurring variations (e.g. polymorphisms), each with its own valid existence. This clone is substantially in agreement with the reference, but a complete review of all prevailing variants is recommended prior to use. [More info](#)

**OTI Annotation:** This clone was engineered to express the complete ORF with an expression tag. Expression varies depending on the nature of the gene.

**Components:** The ORF clone is ion-exchange column purified and shipped in a 2D barcoded Matrix tube containing 10ug of transfection-ready, dried plasmid DNA (reconstitute with 100 ul of water).

**Reconstitution Method:**

1. Centrifuge at 5,000xg for 5min.
2. Carefully open the tube and add 100ul of sterile water to dissolve the DNA.
3. Close the tube and incubate for 10 minutes at room temperature.
4. Briefly vortex the tube and then do a quick spin (less than 5000xg) to concentrate the liquid at the bottom.
5. Store the suspended plasmid at -20°C. The DNA is stable for at least one year from date of shipping when stored at -20°C.

**RefSeq:** [NM\\_177538.1](#), [NP\\_803882.1](#)

**RefSeq Size:** 2122 bp

**RefSeq ORF:** 1389 bp

**Locus ID:** 57404

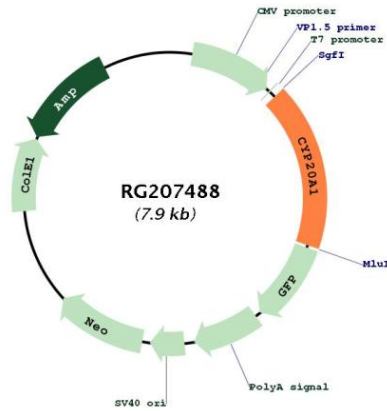
**UniProt ID:** [Q6UW02](#)

**Cytogenetics:** 2q33.2

**Protein Families:** Druggable Genome, P450, Transmembrane

**Gene Summary:** This gene encodes a member of the cytochrome P450 superfamily of enzymes. The cytochrome P450 proteins are monooxygenases that catalyze many reactions involved in drug metabolism and synthesis of cholesterol, steroids and other lipids. This protein lacks one amino acid of the conserved heme binding site. It also lacks the conserved I-helix motif AGX(D,E)T, suggesting that its substrate may carry its own oxygen. [provided by RefSeq, Jul 2008]

**Product images:**



Circular map for RG207488