

Product datasheet for **RG207484**

MTMR4 (NM_004687) Human Tagged ORF Clone

Product data:

Product Type:	Expression Plasmids
Product Name:	MTMR4 (NM_004687) Human Tagged ORF Clone
Tag:	TurboGFP
Symbol:	MTMR4
Synonyms:	FYVE-DSP2; ZFYVE11
Mammalian Cell Selection:	Neomycin
Vector:	pCMV6-AC-GFP (PS100010)
E. coli Selection:	Ampicillin (100 ug/mL)
ORF Nucleotide Sequence:	>RG207484 representing NM_004687 Red=Cloning site Blue=ORF Green=Tags(s)

TTTTGTAATACGACTCACTATAGGGCGGCCGGAATTCGTCGACTGGATCCGGTACCGAGGAGATCTGCC
GCC**CGATCGCC**

ATGGGTGAGGAGGGGCCCCAGCCTGGAGTACATCCAAGCCAAGGATCTGTTCCCCCAAGGAAGT
TGAAGGAGGAAGAGAATCTTCAGGTCCCCTCACAGTGCAGGGTGGAGGAGTAGAGTTCCTGGGCCG
GGCAGCCGATGCCCTCATTGCCATCTCTAACTACCGGCTGCATATCAAATCAAGGACTCTGTCATCAAC
GTCCCCCTCCGGATGATTGACAGTGTGGAGAGCCGTGATATGTTCCAGTGCACATTTCTGCAAGGACT
CCAAAGTGGTGGAGTGCCTTTCCACTTTTAAAGCAGTGCCAAGAGTGGCTCTCACGGCTAAGCCGAGC
CACAGCAAGACCTGCCAAGCCTGAAGACCTCTTTGCCTTTGCCTACCATGCCTGGTGCCTGGGGCTGACC
GAGGAGGACCAGCACACTCACCTATGTCAGCCAGGTGAGCACATACGTTGTGACAGGAGCGGAGCTTG
CAAGGATGGGCTTTGACCTGCAGAACGTCTGGAGAGTCTCACACATCAACAGCAACTACAAATGTGCC
CAGTTACCCCCAGAAGCTGCTGGTTCTGTGTGGATCACTGACAAAGAGCTGGAGAAGCTGGCTTCTTC
CGCTCCTGGAAGCGGATCCCCTGGTGTGTATAGACACTGCGCAATGGGGCTGCCATCGCCCGTGA
GCCAGCCAGAGATCAGCTGGTGGGGCTGGCGCAATGCTGATGATGAGTACCTGGTACGTCCATTGCTAA
AGCCTGTGCCCTGGACCCGGGACAAGGGCCACTGGGGCTCCCTCAGCACCGGGAATAATGATACCGGC
GAGGCGTGTGATGCTGACTTTGATTCTTCTGACTGCTGCTGGAGTGGAGAGCACAGCAGCTCCTC
AAAAGCTGCTGATCCTGGATGCGGATCCTACACGGCAGCAGTGGCCAACCGGGCCAAGGGTGGAGGCTG
TGAATGTGAAGAGTACTATCCAACTGTGAGGTCGTGTTTATGGGAATGGCCAACATCCATGCCATCCGG
AACAGCTTTCAGTACCTCCGGGCTGTGTAGCCAGATGCCGGATCCTAGCAACTGGTTGTGCGCACTGG
AGAGTACCAAAATGGCTGCAGCACTTGTGCGGTGATGCTAAAAGCAGCTGTGCTGGTGGCTAATACAGTAGA
CCGGGAAGGCCGGCTGTGCTGGTACACTGCTCAGATGGCTGGGACCGCACACCGCAGATCGTAGCCCTG
GCCAAAATATTACTGGACCCATATTACAGGACGTTGGAGGGCTTCCAAGTGTAGTGGAGTCTGACTGGC
TGGATTTGGGCACAAGTTGGAGATCGCTGTGCCACCAAGAGAATGTGGAGGACCAAAACGAACAATG
CCCTGTGTTCTCCAGTGGCTTATTCTGTTTATCAGTTCGTTAAGCAGTCCCCTGCCTGTTTGAATTT



[View online »](#)

AATGAAGCATTCTGGTAAAACCTGGTGCAACACATACTCCTGCCTCTACGGCACCTTCCTGGCCAACA
ACCCCTGTGAGCGAGAGAAGCGCAACATCTACAAGCGGACCTGCTCTGTGTGGCGCTCCTTCGAGCTGG
CAATAAAAACCTTTTATACTTCTCTACACACCCAGCTCAGACATGGTCTGCATCCTGTTTGCATGTC
CGGGCCCTGCACCTCTGGACAGCTGTTTATCTGCCAGCATCATCTCCATGCACACTTGGGAAGAAAACA
TGGATCTTTACCTTTCCCAGTGGCCAGAGCCAGGAGTTCTCTGGCCGCTCTCTGGACAGATTACCTAA
AACCGATCCATGGATGATCTTCTTTCTGCCTGTGACACAAGCAGCCCCCTGACTCGTACATCCAGTGAC
CCTAACCTGAATAACCACTGTGAGGAGTCAAGGTAGGCTGGAGCCCTGGCACAGCAATCCTGAGGGAG
CAGAGACAAGCTTTGTGGACTCTGGGGTAGGAGGGCTCAGCAAACCTGTAGGAGAAGTGGGTCTTCTCTCC
TCTCTGCCAGCAGCCAGAAAAGACTACTTGAGCAATAAACCTTTCAAGAGTCACAAAAGCTGTTCTCCA
AGTTACAAAACCTTAATACCGCAGTGCCTCGGAAAATGAAGAGCAACACCTCTGATCCTGAGATCAAAG
TCCTAGAAGAGACTAAGGGACCAGCTCCAGACCCTTCTGCCAGGATGAGCTGGGTAGGACTTTAGATGG
CATAGGGGAGCCACCTGAACATTGTCTGAAACAGAAGCTGTGAGTGCACCTCTCAAGGTCATTTCTAAC
AAGTGTGATGGAGTTTGAATTTTCTGAGTCTTCCAGAACTCTCTACAGGTACGCCAACAGGCCCC
AGCCAGACTCCATGCTAGGTGTGCCCTCCAAGTGTGTTCTTGATCACAGCCTCAGCACCGTTTGAACCC
ACCGAGTGTGCTGCCAAACTCTCTAGACCCAAGCACTGACTTCTCAACCAAGATCCCTCAGGGTCT
GTGGCAAGTATCTCCACAGGAACAACAGTGTCTGTGCCGGATCTGACCCATGGGAGGAAGACATTG
GTAAAAGAGGAAAATAATAGGAATGGGCAGTTATTGAAAATCCTCGCTTTGGGAAAATGCCATTGGAATT
GGTCCGGAAGCCAATTTCTCAGAGCCAGATCAGTGAGTCTCTTTTCTAGGGTCCAACCTGGGACAGCTTC
CAAGGGATGGTGACTTCATTCCAAGTGGGAGGCCACCCTCGGCGGCTGCTTTCTATGGCTGTTGTA
GCAAGAGGCCAAACAGTAAGCAGATGCGGGCCACAGGGCCCTGCTTTGGGGGCCAGTGGGCTCAGAGAGA
AGGTGTGAAGTACCTGTCTGTTCTAGTCATTCCAATGGACATTGACTGGCCAGGAGGAAAGAACCAG
ATGTGGTTGTCCAGTCATCAAAGCAAGTCTCTAGCACAAAGCCGTTCCACTGAACTGCCCTTCTCCAG
TGCTCCTCTGTATTTGGATGATGATGGACTCCCCTTTCCACGGATGTGATCCAGCATAGGTTACGGCA
AATCGAAGCAGGGTACAACAAGAGGTGGAGCAGCTACGTCGACAGGTGGGTGAGCTTCAGATGAGGCTG
GACATCCGTCACCTGCTGTGCCCTCCAGCAGAGCCCCCATGGACTATGAGGATGATTTTACATGTTTGA
AGGAGTCAGATGGCAGTGATACTGAGGATTTTGGCTCTGATCACAGTGAAGACTGCCTTTTCAAGCAAG
CTGGGAACCTGTTGATAAGAAAGAGACTGAGGTGACTCGCTGGGTCCAGACCATATGGCATCACACTGC
TATAACTGTGACTGTGAATTCTGGTTGGCCAAACGAAGACACCATTGCAGAAATTGTGGGAATGATTTT
GTGCTGGATGCTGCCACCTGAAGCTGCCATTCTGATCAGCAACTCTATGACCCAGTTCTCGTCTGTAA
CTCATGTTACGAACACATTCAAGTCTCTCGTGCCAGGAACTCATGAGCCAACAGCTGAAGAAACCCATT
GCTACAGCTTCCAGT

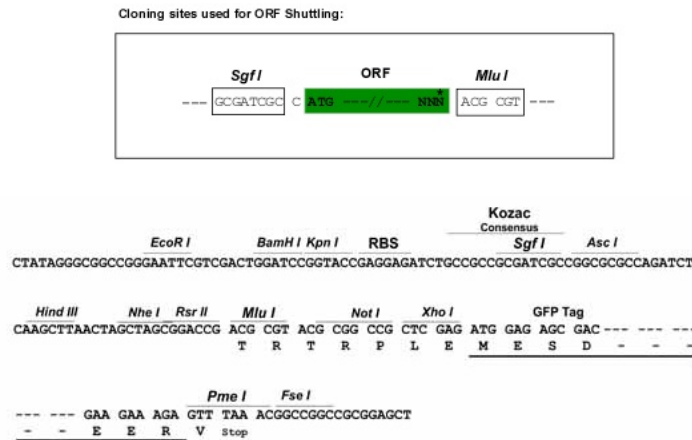
ACGCGTACGCGGCCGCTCGAG - GFP Tag - GTTTAA

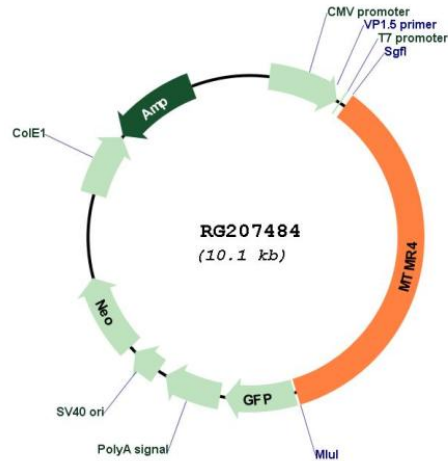
Protein Sequence: >RG207484 representing NM_004687
 Red=Cloning site Green=Tags(s)

MGEEGPPSLEYIQAKDLFPPKELVKEEENLQVPFTVLQEGEVFLGRAADALIAISNYRLHIKFKDSVIN
 VPLRMIDSVESRDMFQLHISCKDSKVVRCHFSTFKQCQEWLSRLSRATARPAKPEDLFAFAYHAWCLGLT
 EEDQHTHL CQPGEHIRCRQEALARMGFDLQNVWRVSHINSNYKLCPSPYQKLLVPWITDKELNVASF
 RSWKRIPVVVYRHLRNGAAIARCSQPEISWGWNRNADDEYLVTIAKACALDPGTRATGGSLSTGNNDTG
 EACDADFSSLTACSGVESTAAPQKLLILDARSYTAAVANRAKGGGCECEEYYPNCEVVMGMANIHAIR
 NSFQYLRAVCSQMPDPSNWL SALESTKWLQHL SVMLKAAVL VANTVDREGRPVLVHCSGDWDRTPQIVAL
 AKILLDPYYRTLEGFQVLVESDWLDFGHKFGDRCGHQENVEDQNEQCPVFLQWLDSVHQLLKQFPCLFEF
 NEAFLVKLVQHTYSCLYGTFLANNPCEREKRNIIYKRTCSVWALLRAGNKNFHNFLYTPSSDMVLHPVCHV
 RALHLWTAVYLPASSPCTLGEENMDLYLSPVAQSQEFSGRSLDRLPKTRSMDDL SACDTSSPLTRTSSD
 PNLNNHCQEVVRVLEPWHSNPEGSETSFVDSGVGGPQQT VGEVGLPPPLPSSQKDYLSNPKFKSHKSCSP
 SYKLLNTAVPREMKSNTSDPEIKVLEETKGPADPSAQDELGRTL DGI GEPPEHCPETEAVSALSKVISN
 KCDGVCNFPESQNSPTGTPQQAQPD SMLGVPSKCVLDHSLSTVCNPPSAACQTPLPDSTDFLNQDPSGS
 VASISHQEQ LSSVPDLTHGEEDI GKRGNRRNGQLLENPRFGKMPLELVRKPI SQSQISEFSFLGSNWDSF
 QGMVTSFSPGEATPRRLLSYGCCSKRPNSKQMRATGPCFGGQWAQREGVKSPVCSSSHNGHCTGGGKNQ
 MWLSSHPKQVSSTKPVPLNCPSPVPPLYLDDDGLPFPTDVIQHRLRQIEAGYKQVEQLRRQVRELQMRL
 DIRHCCAPPAEPPMDYEDDF TCLKESDGS DTEDFGSDHSEDCLEASWEPVDKKE TEVTRWVPDHMASHC
 YNCDCEFWLAKRRHHCRCNGNVFCAGCCHLKLIPDQQL YDPVLVCNCSYEHIQVSRARELMSQQLKKPI
 ATASS

TRTRPLE - GFP Tag - V

Restriction Sites: SgfI-MluI
Cloning Scheme:



Plasmid Map:


ACCN: NM_004687

ORF Size: 3585 bp

OTI Disclaimer: The molecular sequence of this clone aligns with the gene accession number as a point of reference only. However, individual transcript sequences of the same gene can differ through naturally occurring variations (e.g. polymorphisms), each with its own valid existence. This clone is substantially in agreement with the reference, but a complete review of all prevailing variants is recommended prior to use. [More info](#)

OTI Annotation: This clone was engineered to express the complete ORF with an expression tag. Expression varies depending on the nature of the gene.

Components: The ORF clone is ion-exchange column purified and shipped in a 2D barcoded Matrix tube containing 10ug of transfection-ready, dried plasmid DNA (reconstitute with 100 ul of water).

Reconstitution Method:

1. Centrifuge at 5,000xg for 5min.
2. Carefully open the tube and add 100ul of sterile water to dissolve the DNA.
3. Close the tube and incubate for 10 minutes at room temperature.
4. Briefly vortex the tube and then do a quick spin (less than 5000xg) to concentrate the liquid at the bottom.
5. Store the suspended plasmid at -20°C. The DNA is stable for at least one year from date of shipping when stored at -20°C.

RefSeq: [NM_004687.3](#), [NP_004678.2](#)

RefSeq Size: 5840 bp

RefSeq ORF: 3588 bp

Locus ID: 9110

UniProt ID: [Q9NVA4](#)

Cytogenetics: 17q22

Domains:	FYVE
Protein Families:	Druggable Genome, Phosphatase
Gene Summary:	Dephosphorylates proteins phosphorylated on Ser, Thr, and Tyr residues and low molecular weight phosphatase substrate para-nitrophenylphosphate. Phosphorylates phosphatidylinositol 3,4,5-trisphosphate (PIP3).[UniProtKB/Swiss-Prot Function]