

Product datasheet for **RG207448**

ZCCHC9 (NM_032280) Human Tagged ORF Clone

Product data:

Product Type:	Expression Plasmids
Product Name:	ZCCHC9 (NM_032280) Human Tagged ORF Clone
Tag:	TurboGFP
Symbol:	ZCCHC9
Synonyms:	PPP1R41
Mammalian Cell Selection:	Neomycin
Vector:	pCMV6-AC-GFP (PS100010)
E. coli Selection:	Ampicillin (100 ug/mL)
ORF Nucleotide Sequence:	>RG207448 representing NM_032280 Red=Cloning site Blue=ORF Green=Tags(s)

TTTTGTAATACGACTCACTATAGGGCGGCCGGAATTCGTCGACTGGATCCGGTACCGAGGAGATCTGCC
GCC**CGATCGC**C

ATGACCAGGTGGGCCGAGTTAGTACCACATATAACAAGAGAGCCTTGCCTGCAACATCATGGGAGGACA
TGAAGAAGGGATCCTTTGAGGGAACAAGCCAAAACCTACCAAAGCGTAAACAACCTGAAGCCAATAGGCT
ATCCCTCAAAAATGATGCACCCCAAGCAAAACATAAAAAGAACAAGAAAAAGAGTACTTAAATGAA
GATGTGAATGGATTCATGAATACCTAAGACAGAATTCACAGATGGTTCACAATGGGCAATTATAGCAA
CAGACAGTGAGGAAGTAAGGGAAGAAATTCAGTTGCTTTAAAGAAAGACAGTCGACGGGAAGGAAGAAG
ATTAAGAAAGACAAGCGGCAAGAAAAATGCAATGGTGTGTTCCATTGTAGAAAACCTGGTCATGGAATT
GCAGATTGCCCGCTGCCCTGAAAATCAAGACATGGGCACTGGGATATGTTACAGGTGTGGTCCACAG
AGCACGAAATAACCAAGTGAAGGCTAAAGTAGACCCGGCTCTTGGCGAATTTCCCTTTTGCAAAAATGTTT
TGTTTGTGGAGAAATGGGCACTGTCTAGATCTGTCTGATAATCCCAAAGGACTCTATGCTGATGGT
GGCGGTTGCAACTTTGTGGCTCTGTGGAACATTTAAAGAAAGATTGCCCTGAAAGTCAGAAATTCAGAGC
GAATGGTCACAGTTGGTCGCTGGCAAGGGAATGAGTGCAGACTATGAAGAAATTTGGATGTACCTAA
ACCGCAAAAACCAAAAACAAAAATACCTAAAGTTGTTAATTTT

ACGCGTACGCGGCCGCTCGAG - GFP Tag - GTTTAA



[View online »](#)

Protein Sequence: >RG207448 representing NM_032280
 Red=Cloning site Green=Tags(s)

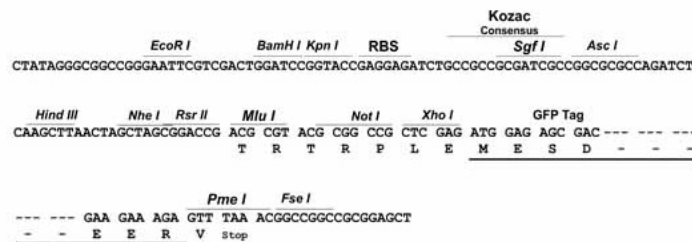
MTRWARVSTTYNKRALPATSWEDMKKGSFEGTSQNLPKRKQLEANRLSLKNDAPQAKHKKNNKKKEYLNE
 DVNGFMEYLRQNSQMVHNGQIIATDSEEVREEIAVALKKDSRREGRRLLKRQAAKKNAMVCFHCRKPGHGI
 ADCPAALENQDMGTGICYRCGSTEHEITKCKAKVDPALGEPFAKCFVCGEMGHLRSRCPDNPKGLYADG
 GGCKLCGSVEHLKKDCPESQNSERMVTVGRWAKGMSADYEEILDVPPKQPKTKIPKVVNF

TRTRPLE - GFP Tag - V

Restriction Sites: SgfI-MluI

Cloning Scheme:

Cloning sites used for ORF Shutting:



ACCN: NM_032280

ORF Size: 813 bp

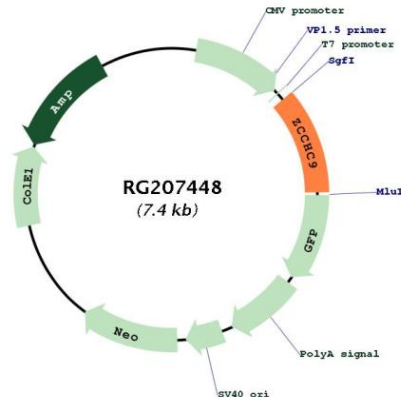
OTI Disclaimer: The molecular sequence of this clone aligns with the gene accession number as a point of reference only. However, individual transcript sequences of the same gene can differ through naturally occurring variations (e.g. polymorphisms), each with its own valid existence. This clone is substantially in agreement with the reference, but a complete review of all prevailing variants is recommended prior to use. [More info](#)

OTI Annotation: This clone was engineered to express the complete ORF with an expression tag. Expression varies depending on the nature of the gene.

Components: The ORF clone is ion-exchange column purified and shipped in a 2D barcoded Matrix tube containing 10ug of transfection-ready, dried plasmid DNA (reconstitute with 100 ul of water).

Reconstitution Method:	<ol style="list-style-type: none">1. Centrifuge at 5,000xg for 5min.2. Carefully open the tube and add 100ul of sterile water to dissolve the DNA.3. Close the tube and incubate for 10 minutes at room temperature.4. Briefly vortex the tube and then do a quick spin (less than 5000xg) to concentrate the liquid at the bottom.5. Store the suspended plasmid at -20°C. The DNA is stable for at least one year from date of shipping when stored at -20°C.
Note:	Plasmids are not sterile. For experiments where strict sterility is required, filtration with 0.22um filter is required.
RefSeq:	NM_032280.1 , NP_115656.1
RefSeq Size:	4635 bp
RefSeq ORF:	816 bp
Locus ID:	84240
UniProt ID:	Q8N567
Cytogenetics:	5q14.1
Domains:	zf-CCHC
Gene Summary:	May down-regulate transcription mediated by NF-kappa-B and the serum response element. [UniProtKB/Swiss-Prot Function]

Product images:



Circular map for RG207448