

Product datasheet for **RG207443**

SPZ1 (NM_032567) Human Tagged ORF Clone

Product data:

Product Type:	Expression Plasmids
Product Name:	SPZ1 (NM_032567) Human Tagged ORF Clone
Tag:	TurboGFP
Symbol:	SPZ1
Synonyms:	CILD38; NYD-TSP1; PPP1R148
Mammalian Cell Selection:	Neomycin
Vector:	pCMV6-AC-GFP (PS100010)
E. coli Selection:	Ampicillin (100 ug/mL)
ORF Nucleotide Sequence:	>RG207443 representing NM_032567 Red=Cloning site Blue=ORF Green=Tags(s)

TTTTGTAATACGACTCACTATAGGGCGGCCGGAATTCGTCGACTGGATCCGGTACCGAGGAGATCTGCC
GCC**CGATCGCC**

ATGGCCAGCTCTGCTAAGTCAGCTGAGATGCCACCATCTCCAAAACCCTTAACCCCTACTCCTGATCCTC
ATCAAGAATATCTGGACCCTAGGATTACCATTGCCTTATTCGAAATTGGATCACATTCCTCCTCCTG
GGGCTCTCCTCCTTCTAAAGAATAGCAGCCATCAAGTTACAGAACAACAGACTGCACAGAAGTTAAC
AATCTCTTAAAAGAAATTAAGATATTCTTAAAAATATGGCAGGTTTTGAAGAGAAGATCACAGAAGCAA
AAGAACTTTTTGAGGAAACCAATATTACTGAGGATGTGTCAGCCACAAAGAAAATATCAGAGGACTTGA
CAAAATCAATGAAATGTTATCAACAAACCTGCCTGTTAGTTTAGCCCCAGAGAAAGACAATGAAAAG
AAACAGGAGATGATATTGAAACCAATATTACTGAGGATGTGTCAGCCACAAAGAAAATATCAGAGGAC
TTGACAAAATCAATGAAATGTTATCAACAAACCTGCCTGTTAGTTTAGCCCCAGAGAAAGACAAATGA
AAAGAAACAGCAGATGATAATGGAAAACCGAAGCTCTGAGAACACCGCACAAAGTTTTTGCAAGAGATTTG
GTAATCGTTTAGAAGAAAAAAGTCCCTAACGAACTCAACAAAGTCAGGAAAAAGCAAAAAACAGAC
TTAATGTTCAAGAAGAACTATGAAAATTAGGAACAACATGGAGCAGTTACTACAGGAAGCAGAACACTG
GAGTAAACAACATACTGAGCTCAGTAACTGATAAAATCCTATCAGAAAATCTCAGAAAGACATAAGTGAA
ACTCTTGAAATTAATGGAGTCGGTTTCCAAACCCAGCCAAATAATGAAGTGTCCGCTAAGCATGAGCTGG
AGGAACAGGTGAAGAACTGAGCCATGACACCTATTCATTGCAGTTGATGGCAGCTTTGCTAGAGAAATGA
ATGCCAAATCTTACAGCAGAGAGTAGAGATTCTCAAGGAACTCCATCATCAGAAAACAGGAACTCTGCAA
GAGAAGCCAATTCAGATAAACTATAAACAGGACAAGAAAATCAGAAGCCATCAGAAGCAAGAAAGTAG
AAATGTATAAGCAGAACAAGCAAGCAATGAAGGGTACATTTTGAAAAAAGACAGATCCTGTAGAAGCCT
GGATGTTTGTCTTAATAAGAAAGCTTGAATACCCAGTTCAATATTCATGTTGCAAGAAAAGCTCTTAGG
GGAAAAATGAGGTCAGCTAGCAGCCTAAGA

ACGCGTACGCGGCCGCTCGAG - GFP Tag - GTTTAA



[View online »](#)

Protein Sequence: >RG207443 representing NM_032567
 Red=Cloning site Green=Tags(s)

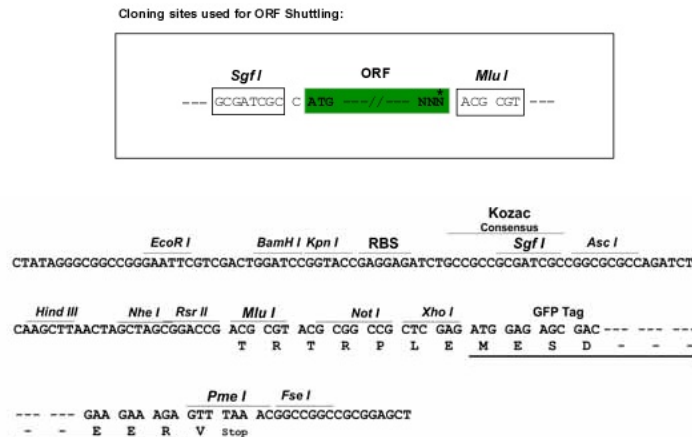
MASSAKSAEMPTISKTLNPTDPHQEYLDPRITIALFEIGSHSPSSWGSPLFLKNSSHQVTEQQTAKQFN
 NLLKEIKDILKNMAGFEEKITEAKELFEETNITEDVSAHKENIRGLDKINEMLSTNLPVSLAPEKEDNEK
 KQEMILETNITEDVSAHKENIRGLDKINEMLSTNLPVSLAPEKEDNEKKQQMIMENQNSENTAQVARDL
 VNRL EEEKV LNETQQSQEKAKNRLNVQEETMKIRNNMEQLLQEAHWSKQHTELSKLIKSYQKSQKDI SE
 TLGNNGVGFQTQPNNEVSAKHELEEQVKKLSHDTYSLQLMAALLENECQILQQRVEILKELHHQKQTLQ
 EKPIQINYKQDKKNQKPSEAKK VEMKQNKQAMKGTFWKKDRSCRSLDVCLNKKACNTQFNHIVARKALR
 GKMRSSASLR

TRTRPLE – GFP Tag – V

Restriction Sites:

SgfI-MluI

Cloning Scheme:



ACCN: NM_032567

ORF Size: 1290 bp

OTI Disclaimer: The molecular sequence of this clone aligns with the gene accession number as a point of reference only. However, individual transcript sequences of the same gene can differ through naturally occurring variations (e.g. polymorphisms), each with its own valid existence. This clone is substantially in agreement with the reference, but a complete review of all prevailing variants is recommended prior to use. [More info](#)

OTI Annotation: This clone was engineered to express the complete ORF with an expression tag. Expression varies depending on the nature of the gene.

Components: The ORF clone is ion-exchange column purified and shipped in a 2D barcoded Matrix tube containing 10ug of transfection-ready, dried plasmid DNA (reconstitute with 100 ul of water).

Reconstitution Method:

1. Centrifuge at 5,000xg for 5min.
2. Carefully open the tube and add 100ul of sterile water to dissolve the DNA.
3. Close the tube and incubate for 10 minutes at room temperature.
4. Briefly vortex the tube and then do a quick spin (less than 5000xg) to concentrate the liquid at the bottom.
5. Store the suspended plasmid at -20°C. The DNA is stable for at least one year from date of shipping when stored at -20°C.

Note: Plasmids are not sterile. For experiments where strict sterility is required, filtration with 0.22um filter is required.

RefSeq: [NM_032567.2](#), [NP_115956.2](#)

RefSeq Size: 1880 bp

RefSeq ORF: 1293 bp

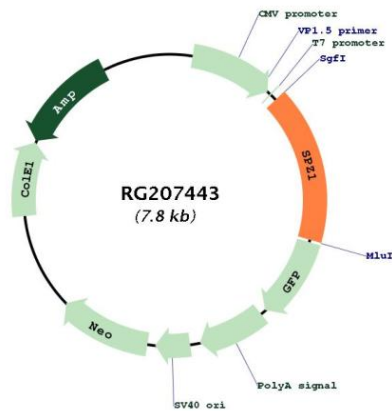
Locus ID: 84654

UniProt ID: [Q9BXG8](#)

Cytogenetics: 5q14.1

Gene Summary: This gene encodes a bHLH-zip transcription factor which functions in the mitogen-activate protein kinase (MAPK) signaling pathway. Because of its role in the upregulation of cell proliferation and tumorigenesis, this gene may serve as a target for Ras-induced tumor treatments. [provided by RefSeq, Oct 2011]

Product images:



Circular map for RG207443