

## Product datasheet for **RG207424**

### **GBGT1 (NM\_021996) Human Tagged ORF Clone**

#### Product data:

**Product Type:** Expression Plasmids  
**Product Name:** GBGT1 (NM\_021996) Human Tagged ORF Clone  
**Tag:** TurboGFP  
**Symbol:** GBGT1  
**Synonyms:** A3GALNT; FS; UNQ2513  
**Mammalian Cell Selection:** Neomycin  
**Vector:** pCMV6-AC-GFP (PS100010)  
**E. coli Selection:** Ampicillin (100 ug/mL)  
**ORF Nucleotide Sequence:** >RG207424 representing NM\_021996  
**Red=Cloning site Blue=ORF Green=Tags(s)**

TTTTGTAATACGACTCACTATAGGGCGGCCGGAATTCGTCGACTGGATCCGGTACCGAGGAGATCTGCC  
GCC**CGATCGCC**

ATGCATCGCCGGAGACTGGCCCTGGGTCTGGGTTCTGCCTGTTGGCGGGCACAACTTCAGTGTCTGT  
GGGTGTATCTTGAGAACTGGCTGCCAGTCTCCTATGTCCCTATTATCTCCCTGCCAGAGATCTTCAA  
CATGAAGCTGCACTACAAGAGGGAGAAGCCACTCCAGCCCGTGGTATGGTACAGTACCCTCAGCCCAAG  
CTGCTGGAGCACAGGCCACACAGCTGCTGACACTCACACCCTGGTTGGCGCCATCGTCTCCGAGGGAA  
CCTTCAACCCAGAGCTTCTGCAGCACATCTACCAGCCACTGAACCTGACCATTGGGGTACGGTGTGTTGC  
CGTGGGGAAGTACTACTATTTCAATCCAGTCTTCTGGAGTACAGCCGAGGAGTTCTTCATGCGTGGGTAC  
CGGGTGCCTACTACTCTTCACTGACAACCTGCAGCCGTTCCCGGGTCCCGTGGTCCCCACCCGGC  
TTCTCAGTCCATCCCCATCCAGGGTCACTCCCACTGGGAGGAGACATCCATGCGCCGGATGGAGACCAT  
CAGCCAGCACATTGCTAAGAGGGCTCACCGGGAGGTGGACTACCTCTTCTGCCTTGATGTGGACATGGTG  
TTTCGGAACCCGTGGGGCCCTGAGACCTGGGAGACCTGGTGGCTGCCATTACCCAAAGCTACTACGCCG  
TTCCCCGCCAGCAGTCCCCTATGAGCGCAGGCGTGTTCCTACTGCCTTGTGGCAGACAGCGAAGGGGA  
CTTCTATTATGGTGGGGCAGTCTTCGGGGGCGAGTGGCCAGGGTATATGAGTTTACTAGGGCTGCCAC  
ATGGCCATCCTGGCGGACAAGGCCAATGGCATCATGGCTGCCTGGCGGGAGGAAAGCCACCTGAACCGTC  
ACTTCATCTCAAACAAGCCGTCCAAGGTGCTGTCCCGGAGTACCTCTGGGACGACAGGAAGCCCAAGCC  
ACCCAGTCTGAAGCTGATCCGCTTTTCTACACTGGACAAGGATATCAGCTGCCTGAGGAGC

**ACGCGTACGCGGCCGCTCGAG** - GFP Tag - GTTTAA



[View online »](#)

**Protein Sequence:** >RG207424 representing NM\_021996  
 Red=Cloning site Green=Tags(s)

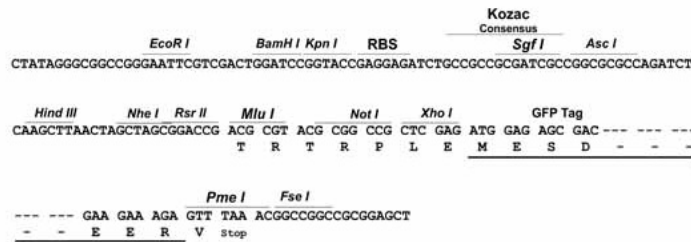
MHRRRLALGLGFCLLAGTSFSVLWVYLENLVPSYVPPYLLPCPEIFNMKLHYKREKPLQPVVWSQYPQPK  
 LLEHRPTQLLTLTPWLAPIVSEGTFNPELLQHIYQPLNLTIGVTVFAVGKYTHFIQSFLSAEEFFMRGY  
 RVHYYIFTDNPAAVPGVPLGPHRLLSSIPIQGHSHWEETSMMRRETISQHIAKRAHREVDYLFCLDMDV  
 FRNPWGPETLGDLVAAIHPSYYAVPRQQFPYERRRVSTAFVADSEGDFYGGAVFGGQVARVYEFTRGCH  
 MAILADKANGIMAAWREESHNRHFI SNKPSKVL SPEYLWDDRKPQPPSLKLI R FSTLDKDISCLRS

TRTRPLE - GFP Tag - V

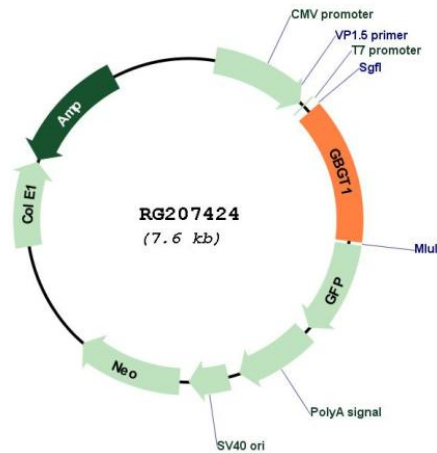
**Restriction Sites:** SgfI-MluI

**Cloning Scheme:**

Cloning sites used for ORF Shuttling:



**Plasmid Map:**



**ACCN:** NM\_021996

**ORF Size:** 1041 bp

<b>OTI Disclaimer:</b>	The molecular sequence of this clone aligns with the gene accession number as a point of reference only. However, individual transcript sequences of the same gene can differ through naturally occurring variations (e.g. polymorphisms), each with its own valid existence. This clone is substantially in agreement with the reference, but a complete review of all prevailing variants is recommended prior to use. <a href="#">More info</a>
<b>OTI Annotation:</b>	This clone was engineered to express the complete ORF with an expression tag. Expression varies depending on the nature of the gene.
<b>Components:</b>	The ORF clone is ion-exchange column purified and shipped in a 2D barcoded Matrix tube containing 10ug of transfection-ready, dried plasmid DNA (reconstitute with 100 ul of water).
<b>Reconstitution Method:</b>	<ol style="list-style-type: none"><li>1. Centrifuge at 5,000xg for 5min.</li><li>2. Carefully open the tube and add 100ul of sterile water to dissolve the DNA.</li><li>3. Close the tube and incubate for 10 minutes at room temperature.</li><li>4. Briefly vortex the tube and then do a quick spin (less than 5000xg) to concentrate the liquid at the bottom.</li><li>5. Store the suspended plasmid at -20°C. The DNA is stable for at least one year from date of shipping when stored at -20°C.</li></ol>
<b>RefSeq:</b>	<a href="#">NM_021996.3</a> , <a href="#">NP_068836.2</a>
<b>RefSeq Size:</b>	1951 bp
<b>RefSeq ORF:</b>	1044 bp
<b>Locus ID:</b>	26301
<b>UniProt ID:</b>	<a href="#">Q8N5D6</a>
<b>Cytogenetics:</b>	9q34.2
<b>Protein Families:</b>	Transmembrane
<b>Protein Pathways:</b>	Glycosphingolipid biosynthesis - globo series, Metabolic pathways
<b>Gene Summary:</b>	This gene encodes a glycosyltransferase that plays a role in the synthesis of Forssman glycolipid (FG), a member of the globoseries glycolipid family. Glycolipids such as FG form attachment sites for the binding of pathogens to cells; expression of this protein may determine host tropism to microorganisms. Alternative splicing results in multiple transcript variants. [provided by RefSeq, Dec 2013]