

Product datasheet for **RG207401**

ZNF398 (NM_020781) Human Tagged ORF Clone

Product data:

Product Type:	Expression Plasmids
Product Name:	ZNF398 (NM_020781) Human Tagged ORF Clone
Tag:	TurboGFP
Symbol:	ZNF398
Synonyms:	P51; P71; ZER6
Mammalian Cell Selection:	Neomycin
Vector:	pCMV6-AC-GFP (PS100010)
E. coli Selection:	Ampicillin (100 ug/mL)



[View online »](#)

ORF Nucleotide Sequence:

>RG207401 representing NM_020781
 Red=Cloning site Blue=ORF Green=Tags(s)

TTTTGTAATACGACTCACTATAGGGCGGCCGGGAATTCGTCGACTGGATCCGGTACCGAGGAGATCTGCC
 GCC**GCGATCGCC**

ATGGCTGAGGCGGCCCGGCCCGACATCTGAATGGGACTCCGAGTGCCTTACATCCCTGCAGCCCCTTC
 CTCTTCTACACCCAGCAGCAAATGAGGCACACCTGCAGACAGCAGCTATCTCTGTGGACAGTGGT
 GGCCGCGTGCAGGCTATAGAGAGGAAGGTGGAGATCCACAGCCGGCGACTCCTACACCTAGAAGGTCGG
 ACAGGGACAGCAGAGAAGAACTAGCCAGCTGTGAAAAGACAGTTACCGAGCTTGGGAACCAGCTGGAGG
 GCAAGTGGGCCGTGCTGGAAACCCTGCTGCAGGAGTACGGGCTGCTGCAGAGGCGGCTGGAGAATTGGA
 GAACCTGCTGCGCAACAGGAACCTTCTGGATCCTGCGGCTCCCTCCAGGTATTAAGGGAGATATCCCAAAG
 GTGCTGTGGCATTGATGATGTCTCCACTACTTTTCCACTCCAGAGTGGGAAAAATTAGAAGAATGGC
 AAAAGGAACCTTACAAGAATATCATGAAGGGCACTACGAGTCTCTCATCTCCATGGATTATGCTATAAA
 TCAACCTGATGTCTTATCTCAGATTCAACCAGAAGGGGAACATAATACAGAGGACCAGGCAGGGCCAGAG
 GAAAGTGAGATCCACAGACCCAGTGAAGAGCCTGGTATTTCAACATCAGATATTCTGTCTTGATTA
 AACAAAGAAGAAGAGCCTCAGGTTGGGGCCACCAGGAGTCCAAGGAGAGTGACGTGTACAAAAGCACTTA
 TGCTGATGAAGAGCTTGTATCAAAGCTGAAGGCCTTGCTAGATCCTCGTTGTGCCCTGAGGTTCCAGTC
 CCTTTCTTTCTCCACCAGCAGCAGCAAAGGATGCTTTTTTCAGATGTGGCTTTCAAAGCCAGCAGTCTA
 CATCCATGACACCTTTTGGAGCTCCAGCCACTGACCTGCCTGAAGCCTCTGAGGGACAAGTACTTTTAC
 TCAGTTGGGTAGCTATCCCTCCACCTCCAGTTGGCGAGCAGGTGTTCTCATGCCACCACTGTGGCAAG
 AATCTCAGCCAAGACATGTTGCTGACCCACCAATGTAGCCATGCTACTGAGCACCCCTTACCCTGTGCC
 AGTGGCCTAAGCACTTTACTCCACAGGCGGACCTCAGCAGCACCTCCAGGACCATGCCAGCAGACACC
 CCCCACCTGCCCACTGTGCCAGGACTTTTACTCACCCATCAAGACTTACCTACCATCTTCGGGTCCAT
 AACAGCACTGAGCGTCTTTCCCTGCTCTGATTGCCCAAGCGCTTTGCTGACCAGGCTCGACTACCA
 GCCACCGGAGAGCTCATGCAAGCGAAAGGCCCTTCCGCTGTGCCAGTGCAGGAGGCTTCCAGTTGAA
 AATCAGCCTCCTGCTCCACCAGCGGGTGCATGCACAAGAGCGCCCTTCTCCTGCCCTCAGTGTGGCATT
 GACTTCAACGGCCACTCGGCCCTGATCCGCCACCAGATGATCCACACAGGCGAGCGTCTTACCCTGCA
 CTGACTGCAGTAAGAGCTTCATGCGCAAGGAGCACCTGCTGAACCACCGGCGGCTGCACACAGGCGAGCG
 GCCCTTCAAGTGTCTCACTGTGGCAAGAGCTTCCGCAAGCACCACTAATGAAACACCAGCGCATC
 CACACCGGGAGCGGCCCTACCCTGCTCTACTGTGGCAGGAGCTTCCGCTACAACAGACACTCAAGG
 ACCACCTCCGTTCAAGCCACAATGGAGGCTGTGGGGTGATAGTGACCCATCAGGTCAGCCACCCAAACC
 ACCAGGTCCTCATAACTGGGCTTGAACCTTCTGGCCTGGGTGTCAACTGAAGGTCTAGAGACCAAC
 CAGTGGTATGGGAAGGGAGTGGAGGGGAGTTTTG

ACGCGTACGCGGCCGCTCGAG - GFP Tag - GTTTAA

Protein Sequence:

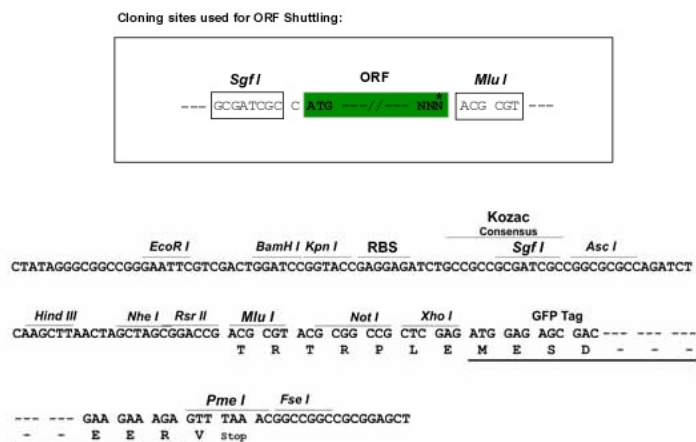
>RG207401 representing NM_020781
 Red=Cloning site Green=Tags(s)

MAEAAPAPTSEWDSECLTSLQPLPLTPPPAANEHLQTAASLWTVVAAVQAIERKVEIHSRLLHLEGR
 TGTAEKKLASCEKTVTELGNQLEGKWAVALGTLLEQYGLLQRRLENLENLLRNRNFWILRLPPGIKGDIPK
 VPVAFDDVSIYFSTPEWEKLEEWQKELYKNIMKGNYESLISMDYAINQPDVLSQIQPEGEHNTDQAGPE
 ESEIPTDPSEEPGISTDILSWIKQEEEPQVGAPPESKESDVYKSTYADEELVIKAEGLARSSLCPPEVPV
 PFSPPAAAKDAFSDVAFKSQSTSMTPFGRPADLPEASEGQVTFQLGSYPLPPPVGQVFSCHHCGK
 NLSQDMLLTHQCSHATEHPLPCAQCPKHFTPADLSSTSQDHASETPPTCPHCARTFTHPSRLTYHLRVH
 NSTERPFPCPDCPKRFADQARLTSHRAHASERPFRAQCGRSFLKISLLHQRGHAQERPFSCPCGI
 DFNHGSALIRHQMIHTGERPYPCTDCSKSFMKHELLNHRRLHTGERPFSCPHCGKSFIRKHLMKHQRI
 HTGERPYPYCSYGRSFRYKQTLKDHLSRSHNGGCGGSDSPSGQPPNPPGLITGLETSGLGVNTEGLETN
 QWYGEKSGGGVL

TRTRPLE - GFP Tag - V

Restriction Sites: SgfI-MluI

Cloning Scheme:



ACCN: NM_020781

ORF Size: 1926 bp

OTI Disclaimer: The molecular sequence of this clone aligns with the gene accession number as a point of reference only. However, individual transcript sequences of the same gene can differ through naturally occurring variations (e.g. polymorphisms), each with its own valid existence. This clone is substantially in agreement with the reference, but a complete review of all prevailing variants is recommended prior to use. [More info](#)

OTI Annotation: This clone was engineered to express the complete ORF with an expression tag. Expression varies depending on the nature of the gene.

Components: The ORF clone is ion-exchange column purified and shipped in a 2D barcoded Matrix tube containing 10ug of transfection-ready, dried plasmid DNA (reconstitute with 100 ul of water).

Reconstitution Method:

1. Centrifuge at 5,000xg for 5min.
2. Carefully open the tube and add 100ul of sterile water to dissolve the DNA.
3. Close the tube and incubate for 10 minutes at room temperature.
4. Briefly vortex the tube and then do a quick spin (less than 5000xg) to concentrate the liquid at the bottom.
5. Store the suspended plasmid at -20°C. The DNA is stable for at least one year from date of shipping when stored at -20°C.

RefSeq: [NM_020781.2](#), [NP_065832.1](#)

RefSeq Size: 5493 bp

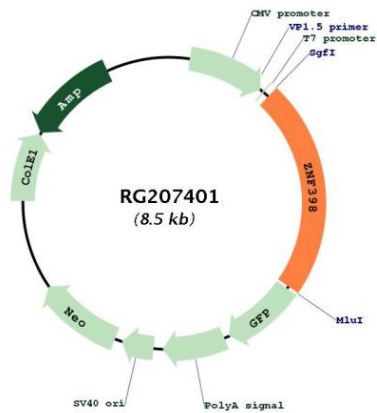
RefSeq ORF: 1416 bp

Locus ID: 57541

UniProt ID: [Q8TD17](#)

Cytogenetics: 7q36.1
Domains: KRAB, zf-C2H2
Protein Families: Druggable Genome, Transcription Factors
Gene Summary: This gene encodes a member of the Kruppel family of C2H2-type zinc-finger transcription factor proteins. The encoded protein acts as a transcriptional activator. Two transcript variants encoding distinct isoforms have been identified for this gene. Other transcript variants have been described, but their full length sequence has not been determined. [provided by RefSeq, Jul 2008]

Product images:



Circular map for RG207401