

## Product datasheet for **RG207391**

### VSIG1 (NM\_182607) Human Tagged ORF Clone

#### Product data:

Product Type:	Expression Plasmids
Product Name:	VSIG1 (NM_182607) Human Tagged ORF Clone
Tag:	TurboGFP
Symbol:	VSIG1
Synonyms:	1700062D20Rik; dj889N15.1; GPA34
Mammalian Cell Selection:	Neomycin
Vector:	pCMV6-AC-GFP (PS100010)
E. coli Selection:	Ampicillin (100 ug/mL)
ORF Nucleotide Sequence:	>RG207391 representing NM_182607 Red=Cloning site Blue=ORF Green=Tags(s)

TTTTGTAATACGACTCACTATAGGGCGGCCGGAATTCGTCGACTGGATCCGGTACCGAGGAGATCTGCC  
GCC**CGATCGCC**

ATGGTGTTTCGATTTTGAAGGTCTTTCTGATCCTAAGCTGCCTTGCAGGTCAGGTTAGTGTGGTCAAG  
TGACCATCCAGACGGTTTCGTGAACGTGACTGTTGGATCTAATGTCACCTCTCATCTGCATCTACACCAC  
CACTGTGGCCTCCCGAGAACAGCTTTCCATCCAGTGGTCTTTCTCCATAAGAAGGAGATGGAGCCAATT  
TCTATTTACTTTTCTCAAGGTGGACAAGCTGTAGCCATCGGGCAATTTAAAGATCGAATTACAGGGTCCA  
ACGATCCAGGTAATGCATCTATCACTATCTCGCATATGCAGCCAGCAGACAGTGGAAATTTACATCTGCGA  
TGTTAAACAACCCCCAGACTTTCTCGGCCAAAACCAAGGCATCCTCAACGTCAGTGTGTTAGTGAACCT  
TCTAAGCCCTTTGTAGCGTTCAAGGAAGACCAGAAAAGTGGCCACACTATTTCCCTTTCTGTCTCTCTG  
CGCTTGGAACACCTTCCCTGTGTACTACTGGCATAAACTTGAGGGAAGAGACATCGTGCCAGTGAAGA  
AACTTCAACCCAACACCGGATTTTGGTCATTGGAAATCTGACAAATTTGAACAAGGTTATTACCAG  
TGTAAGCCATCAACAGACTTGGCAATAGTTCCTGCGAAATCGATCTCACTTCTTACATCCAGAAGTTG  
GAATCATTGTTGGGGCCTTGATTGGTAGCCTGGTAGGTGCCGCATCATCTCTGTTGTGTGCTTCGC  
AAGGAATAAGGCAAAAGCAAAGGCAAAAGAAAGAAATTTAAGACCATCGCGAACTTGAGCCAATGACA  
AAGATAAACCCAAAGGGGAGAAAGCGAAGCAATGCCAAGAGAAGACGCTACCCAAGTAAGTAACCTAC  
CATCTTCCATTCATGAGACTGGCCCTGATACCATCCAAGAACCAGACTATGAGCCAAAGCCTACTCAGGA  
GCCTGCCCCAGAGCCTGCCCCAGGATCAGAGCCTATGGCAGTGCCTGACCTTGACATCGAGCTGGAGCTG  
GAGCCAGAAACGCACTCGGAATTGGAGCCAGAGCCAGAGCCAGAGCCAGAGTCCAGAGCCTGGGGTTGTAG  
TTGAGCCCTTAAGTGAAGATGAAAAGGGAGTGTTAAGGCA

**ACGCGT**ACGCGGCCGCTCGAG - GFP Tag - GTTTAA



[View online »](#)

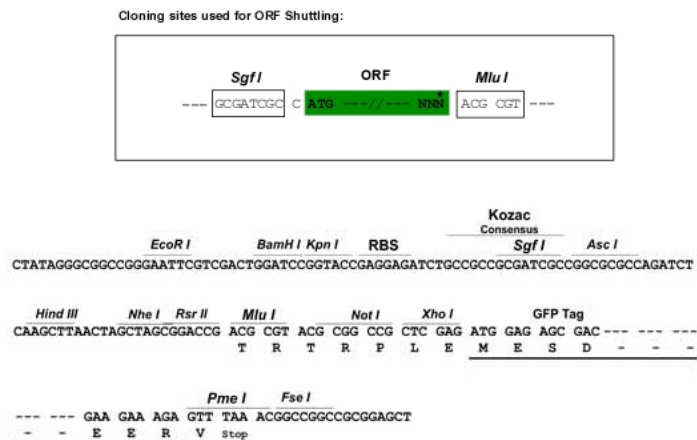
**Protein Sequence:** >RG207391 representing NM\_182607  
 Red=Cloning site Green=Tags(s)

MVFAFWKVFLLSCLAGQVSVVQVTIPDGFVNVTVGSNVTLCIYTTTASREQLSIQWFFHKKEMEPI  
 SIYFSQGGQAVAIGQFKDRITGSNDPGNASITISHMQPADSGIYICDVNPPDFLGQNQGILNVSVLVKP  
 SKPLCSVQGRPETGHTISLSCLSALGTPSPVYYWHKLEGRDIVPVKENFNPTTGILVIGNLTNFEQGYQ  
 CTAINRLGNSSCEIDLTSHPVEVGIIVGALIGSLVGAIIISVVCFARNKAKAKAKERNKSKTIAELEPMT  
 KINPRGESEAMPREDATQLEVTLPSSIHETGPDTIQEPDYEPKPTQEPAPPEPAPGSEPMVDPDLDIELEL  
 EPETQSELEPEPEPEPESEPGVVVEPLSEDEKGVVKA

TRTRPLE - GFP Tag - V

**Restriction Sites:** SgfI-MluI

**Cloning Scheme:**



**ACCN:** NM\_182607

**ORF Size:** 1161 bp

**OTI Disclaimer:** The molecular sequence of this clone aligns with the gene accession number as a point of reference only. However, individual transcript sequences of the same gene can differ through naturally occurring variations (e.g. polymorphisms), each with its own valid existence. This clone is substantially in agreement with the reference, but a complete review of all prevailing variants is recommended prior to use. [More info](#)

**OTI Annotation:** This clone was engineered to express the complete ORF with an expression tag. Expression varies depending on the nature of the gene.

**Components:** The ORF clone is ion-exchange column purified and shipped in a 2D barcoded Matrix tube containing 10ug of transfection-ready, dried plasmid DNA (reconstitute with 100 ul of water).

**Reconstitution Method:**

1. Centrifuge at 5,000xg for 5min.
2. Carefully open the tube and add 100ul of sterile water to dissolve the DNA.
3. Close the tube and incubate for 10 minutes at room temperature.
4. Briefly vortex the tube and then do a quick spin (less than 5000xg) to concentrate the liquid at the bottom.
5. Store the suspended plasmid at -20°C. The DNA is stable for at least one year from date of shipping when stored at -20°C.

**RefSeq:** [NM\\_182607.5](#)

**RefSeq Size:** 3145 bp

**RefSeq ORF:** 1164 bp

**Locus ID:** 340547

**UniProt ID:** [Q86XK7](#)

**Cytogenetics:** Xq22.3

**Protein Families:** Transmembrane

**Gene Summary:** This gene encodes a member of the junctional adhesion molecule (JAM) family. The encoded protein contains multiple glycosylation sites at the N-terminal region, and multiple phosphorylation sites and glutamic acid/proline (EP) repeats at the C-terminal region. The gene is expressed in normal stomach and testis, as well as in gastric, esophageal and ovarian cancers. Alternatively spliced transcript variants encoding different isoforms have been found for this gene. [provided by RefSeq, Dec 2009]

**Product images:**



Circular map for RG207391