

Product datasheet for **RG207386**

COL20A1 (NM_020882) Human Tagged ORF Clone

Product data:

Product Type:	Expression Plasmids
Product Name:	COL20A1 (NM_020882) Human Tagged ORF Clone
Tag:	TurboGFP
Symbol:	COL20A1
Mammalian Cell Selection:	Neomycin
Vector:	pCMV6-AC-GFP (PS100010)
E. coli Selection:	Ampicillin (100 ug/mL)
ORF Nucleotide Sequence:	>RG207386 representing NM_020882 Red=Cloning site Blue=ORF Green=Tags(s)

TTTTGTAATACGACTCACTATAGGGCGGCCGGAATTCGTCGACTGGATCCGGTACCGAGGAGATCTGCC
GCC**CGATCGCC**

ATGAGCTCCGGAGACCCTGCACACCTCGGCCTCTGCCTCTGGCTGTGGCTGGGCGCCACCCTGGGAAGAG
AGCAAGTTC AAGCAAGCGGTCTCCTGAGGCTGGCTGTGCTGCCTGAGGACCGGCTGCAGATGAAGTGGAG
AGAGTCGGAGGGGAGCGGCCTCGGCTACCTGGTGCAGGTGAAGCCATGGCAGGGGACTCGGAACAGGAG
GTGATACTGACCACCAAGACCCCTAAGGCCACAGTGGGGGGCTGAGCCCTCCAAGGGCTACACCTTGC
AGATCTTCGAGCTCACTGGCTCTGGGCGCTTCTGCTAGCTCGGAGGGAGTTTGTGATTGAGGACTGAA
GAGTAGCTCCCTGGACAGGAGCAGCCAGAGGCCCTCGGCTCTGGAGCCCGGAGCCACCCTCCAC
ACGGGGAGCCAGACCCTGAGCAGGCTTCTGAGCCCAAGTTGCCTTACACCAAGCCAGGATCCGCGCA
CTCCTGCCGGCCCCAGTTCGCTGCCTGCCCCCGTGCCTGCTGACATGGTCTTCTGGTGGACGGGTC
CTGGAGCATTGGCCACAGTCACTTCCAGCAGGTCAAGGACTTCTGGCCAGTGTGATCGCACCCCTTTGAA
ATCGGGCCGATAAAGTCCAAGTAGGCCTGACTCAGTACAGCGGGGATGCTCAGACTGAGTGGGACCTGA
ACTCCCTCAGCACAAGGAACAGGTGCTGGCAGCTGTGCGCCGCTCCGCTACAAGGGGGGAACACGTT
CACAGGCCTTGCCTGACCCACGTGCTGGGCGAGAACCAGCCGCGGCTGGCCTCCGTCAGAGGCA
GCCAAGTGGTATTCTGGTGACGGACGGCAAGTCCCAGGACGATGTGCACACTGCTGCCGTGTCTCA
AGGACCTGGGCGTGAACGTCTTCTGCTGTGGGTGTGAAGAACGCCGATGAGGCTGAGCTGAGGCTCCTGGC
GTCCCCGCCGAGGGACATCACCGTCCACAGCGTGTGGACTTCTGCAGCTCGGCGCGCTGGCTGGCCTG
CTCAGCCGTCTCATCTGCCAGAGGCTCCAGGTTGGGAGCCCGCGGAGGGCCAGCAGCGGCTCCAGCCC
TGGACACCCTCCCTGCCCCACCAGCCTGGTCTGAGCCAGGTGACCTCCTCCAGCATCCGCTGTCTG
GACTCCAGCCCCCGGACCCCTCAAGTATCTGATCGTTTGGCGAGCCTTAGAGGTGGCACCCCCAGG
GAGGTGGTGGTGGAGGGACCCCGCCCTCCACGGAGCTGCACAACCTGGCCTCCCGCACAGAGTACCTGG
TCTCCGTGTTCCCATCTATGAGGGCGGGTTGGCGAAGGCCTGCGGGGCTGGTACCACAGCACCTCT
GCCTCCGCCCGGGCGCTGACCCTGGCCGAGTGACGCCAGACCCGTCACCTACCTGGCAGCCCTCG
GCCGGGGCCACCCTACTGCTGGTGGATGTTCTCCTGCTTCCCCAAGGGTGAAGAGGAGGAGCGAGAGG
TGCAGGTGGGGGCCCGAGGTGCTGCTGGATGGCCTGGAACCTGGCAGGGACTATGAGGTCTCGGTGCA



View online »

GAGCCTGCGAGGCCCTGAGGGCAGCGAGGCCCGGGGCATCCGTGCCAGGACCCCCACCCTGGCCCCCCC
AGACACCTGGGCTTCTCAGACGTGAGCCACGACGCGGCACGAGTGTCTGGGAGGGTGCCCCGAGGCCTG
TGCGCCTGGTCAGGGTCACCTATGTGTCCAGCGAGGGTGGACACTCGGGGCAGACAGAGGCTCCTGGAA
CGCCACCTCGGCCACGCTGGGGCCTCTCTTCTCCACCACCTACACTGTCCGTGTACCTGCCTCTAC
CCTGGGGTGGCTCCTCTACGCTGACTGGCCGGGTGACCACCAAGAAAGCTCCCAGCCAAAGCCAGCTGT
CCATGACGGAGCTGCCAGGGGATGCAGTCCAGCTGGCGTGGGTGGCCGCAGCCCCGTCTGGCGTGCCTGT
CTACCAGATCACGTGGACGCCCCGGGAGAGGGGAAGGCTCACGAGATCTGTCTCCAGGGAACTCGGC
ACGGCCGTCTGCCTGGCCTAGGGAGGCACACAGAGTACGACGTACCATCTTGGCCTACTACAGGGACG
GGCCCCGAGTGACCCTGTGTCCCTCCGTATACCCCTCCACGGTGAGCAGGAGCCACCTCCAACCT
GGCCTGGCCTCGGAGACCCCCGACAGCCTGCAGGTGAGCTGGACGCCCCGCTTGGCCGCTGCTCCAT
TACTGGCTCACCTACGCCCCGCTCTGGCTTGGGACCCGAGAAAATCCGTCTGTGCCAGGAGCCAGGA
GCCACGTGACACTGCCGACCTGCAGGCAGCCACGAAGTACAGGGTCTGGTCTCAGCTATCTATGCAGC
AGGCAGGAGTGAGGCTGTGTCTGCCACGGGCCAGACAGCCTGCCAGCCCTCCGCCCTGACGGCTCCCTC
CCAGGGTTTGACCTGATGGTGGCCTTACGCTGGTGGAAAAGGCTTATGCGTCCATCCGGGGCGTGGCCA
TGGAGCCCTCTGCCTTGGTGGGACCCGACCTTACGCTCTTCAAGGACGCCAGCTGACAAGACGGGT
CAGTGACGTCTACCCAGCCCCCTACCTCCAGAGCACACCATCGTCTTCTGTGCGCCTACTTCCCGAG
ACACCCCGTGAGGCCCTTCCGCGCTGTGGCAGATGACAGCCGAGGACTTCCAGCCCCCTTGGGGTCTGC
TGGATGCCGGGAAGAAGTCCCTGACCTACTTCCACCGTGACCCAGGGCTGCCTTGACAGGAGCCACCTT
CGACCCGAGGAAGTGAGGAAGATTTTCTTGGGAGCTTCCACAAGGTGCACGTGGCTGTGGGCCGCTCC
AAGGTACGGCTCTATGTGGACTGCCGGAAGGTGGCTGAGCGGCCCTTGGGGAGATGGGCAGCCACCCG
CTGCGGGCTTCTGTCAGCTGGGGAGGCTGGCCAAGGCCAGGGGCCCGGAGCAGTTCCGGCCGCTTCA
GCTCCAGATGCTGCAGATCGTGTGCAGTGACACCTGGCCGATGAGGACCGGTGCTGTGAGCTCCCTGCC
TCGAGGGATGGAGAGACCTGCCCGCCTTCTGTCTGCCTGTTCTTCTCAGAGACCCCTGGGCCCC
CAGGACCTCAAGGACCCCGAGCCTCCCTGGGAGGAATGGCACCCAGGAGAGCAGGGCTTCCAGGGCC
CAGGGGTCCACCAGGGGTCAAAGGAGAGAAGGGAGACCATGGGCTTCCAGGCTTGCAGGGCCACCCGGC
CACCAGGGCATCCCCGGGAGAGTTGGCCTCCAGGGACCAAGGGAATGAGAGGCCTGGAGGGAAGTCTG
GCCTGCCTGGACCCCTGGCCCCAGGGGTTCCAGGGCATGGCAGGGGCCAGGGGCACTAGTGGAGAGCG
AGGACCTCCAGGGACCGTGGGGCCACAGGACTGCCAGGGCCAAAGGGGAACGAGGAGAGAAGGGCGAG
CCGAGTCCCTTGCACCCTCTACCAGCTTGTGAGCCAGGCTCACACGTGTCAAAGTTCGACTCCTTCC
ACGAGAACCAGGCCCCCATGCCATCTTGGAGCAGAAGCTGGAGCCGGGCACTGAGCCCTGGGGTC
CCCTGGCACCCGAGCAAGGCCCTGGTTCTTGGAGAATGGGGCGTGGTGGCCGCCACCTTGGGGCAGA
GGGGAGCCTGGAGCTGTTGGTCAGATGGCAGCCCTGGGCAGCAGGGGGCTAGCACCCAGGGCCTTGGG
AG

ACGCGTACGCGGCCGCTCGAG - GFP Tag - GTTTAA

Protein Sequence: >RG207386 representing NM_020882
 Red=Cloning site Green=Tags(s)

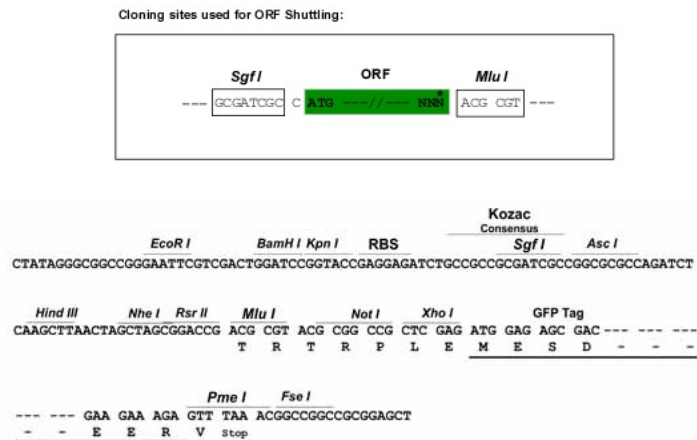
```

MSSGDP A H L G L C L W L W L G A T L G R E Q V Q A S G L L R L A V L P E D R L Q M K W R E S E G S G L G Y L V Q V K P M A G D S E Q E
V I L T T K T P K A T V G G L S P S K G Y T L Q I F E L T G S G R F L L A R R E F V I E D L K S S S L D R S S Q R P L G S G A P E P T P S H
T G S P D P E Q A S E P Q V A F T P S Q D P R T P A G P Q F R C L P P V P A D M V F L V D G S W S I G H S H F Q Q V K D F L A S V I A P F E
I G P D K V Q V G L T Q Y S G D A Q T E W D L N S L S T K E Q V L A A V R R L R Y K G G N T F T G L A L T H V L G Q N L Q P A A G L R P E A
A K V V I L V T D G K S Q D D V H T A A R V L K D L G V N V F A V G V K N A D E A E L R L L A S P P R D I T V H S V L D F L Q L G A L A G L
L S R L I C Q R L Q G G S P R Q G P A A A P A L D T L P A P T S L V L S Q V T S S S I R L S W T P A P R H P L K Y L I W R A S R G G T P R
E V V V E G P A A S T E L H N L A S R T E Y L V S V F P I Y E G G V G E L R G L V T T A P L P P P R A L T L A A V T P R T V H L T W Q P S
A G A T H Y L V R C S P A S P K G E E E E R E V Q V G R P E V L L D G L E P G R D Y E V S V Q S L R G P E G S E A R G I R A R T P T L A P P
R H L G F S D V S H D A A R V F W E G A P R P V R L V R V T Y V S S E G G H S G Q T E A P G N A T S A T L G P L S S S T Y T V R V T C L Y
P G G G S S T L T G R V T T K K A P S P S Q L S M T E L P G D A V Q L A W A A A P S G V L V Y Q I T W T P L G E G K A H E I S V P G N L G
T A V L P G L G R H T E Y D V T I L A Y Y R D G A R S D P V S L R Y T P S T V S R S P P S N L A L A S E T P D S L Q V S W T P P L G R V L H
Y W L T Y A P A S G L G P E K S V S V P G A R S H V T L P D L Q A A T K Y R V L V S A I Y A A G R S E A V S A T G Q T A C P A L R P D G S L
P G F D L M V A F S L V E K A Y A S I R G V A M E P S A F G G T P T F T L F K D A Q L T R R V S D V Y P A P L P P E H T I V F L V R L L P E
T P R E A F A L W Q M T A E D F Q P L L G V L L D A G K K S L T Y F H R D P R A A L Q E A T F D P Q E V R K I F F G S F H K V H V A V G R S
K V R L Y V D C R K V A E R P L G E M G S P P A A G F V T L G R L A K A R G P R S S S A A F Q L Q M L Q I V C S D T W A D E D R C C E L P A
S R D G E T C P A F V S A C S C S E T P G P P G P Q G P P G L P G R N G T P G E Q G F P G P R G P P G V K G E K G D H G L P G L Q G H P G
H Q G I P G R V G L Q G P K G M R L E G T A G L P G P P G P R G F Q G M A G A R G T S G E R G P P G T V G P T G L P G P K G E R G E K G E
P Q S L A T L Y Q L V S Q A S H V S K F D S F H E N T R P P M P I L E Q K L E P G T E P L G S P G T R S K A L V P G E W G R G R H L E G R
G E P G A V Q M G S P G Q Q G A S T Q G L W E
  
```

TRTRPLE - GFP Tag - V

Restriction Sites: SgfI-MluI

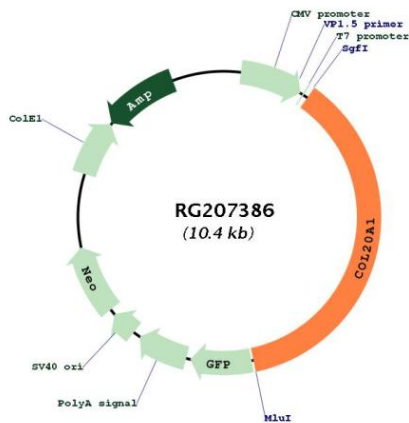
Cloning Scheme:



ACCN: NM_020882

ORF Size: 3852 bp

OTI Disclaimer:	The molecular sequence of this clone aligns with the gene accession number as a point of reference only. However, individual transcript sequences of the same gene can differ through naturally occurring variations (e.g. polymorphisms), each with its own valid existence. This clone is substantially in agreement with the reference, but a complete review of all prevailing variants is recommended prior to use. More info
OTI Annotation:	This clone was engineered to express the complete ORF with an expression tag. Expression varies depending on the nature of the gene.
Components:	The ORF clone is ion-exchange column purified and shipped in a 2D barcoded Matrix tube containing 10ug of transfection-ready, dried plasmid DNA (reconstitute with 100 ul of water).
Reconstitution Method:	<ol style="list-style-type: none"> 1. Centrifuge at 5,000xg for 5min. 2. Carefully open the tube and add 100ul of sterile water to dissolve the DNA. 3. Close the tube and incubate for 10 minutes at room temperature. 4. Briefly vortex the tube and then do a quick spin (less than 5000xg) to concentrate the liquid at the bottom. 5. Store the suspended plasmid at -20°C. The DNA is stable for at least one year from date of shipping when stored at -20°C.
RefSeq:	NM_020882.3
RefSeq Size:	4187 bp
RefSeq ORF:	3855 bp
Locus ID:	57642
UniProt ID:	Q9P218
Cytogenetics:	20q13.33
Protein Families:	Secreted Protein
Gene Summary:	Probable collagen protein.[UniProtKB/Swiss-Prot Function]

Product images:


Circular map for RG207386