

## Product datasheet for **RG207378**

### **FAM123A (AMER2) (NM\_152704) Human Tagged ORF Clone**

#### **Product data:**

Product Type:	Expression Plasmids
Product Name:	FAM123A (AMER2) (NM_152704) Human Tagged ORF Clone
Tag:	TurboGFP
Symbol:	FAM123A
Synonyms:	FAM123A
Mammalian Cell Selection:	Neomycin
Vector:	pCMV6-AC-GFP (PS100010)
E. coli Selection:	Ampicillin (100 ug/mL)



[View online »](#)

**ORF Nucleotide Sequence:**

>RG207378 representing NM\_152704  
 Red=Cloning site Blue=ORF Green=Tags(s)

TTTTGTAATACGACTCACTATAGGGCGGCCGGGAATTCGTCGACTGGATCCGGTACCGAGGAGATCTGCC  
 GCC**CGGATCGCC**

ATGGAGACGAGCCGGAGCCGCGGCGCGGGCTGTACAGCAGCGCGCGGAGCTGGCGCGTCCGTGG  
 GGGTCTGCAGGAGGAAGCGGAGGCCGGGGCCGGACCGGACCTCGCGGCAGACATGGACTTGCATTG  
 TGA CTGTGCCCGAAACGCCGGCCGCCGAGCCGCTCGGGGAAGATTATAAAGCTGCCTTCAAATTA  
 TTCAAGAAGAGAAATCGGGTGGCACCATGCCAGCATTTTGGGGTCAAAAACAAAGGGGACGGGAAAA  
 GCTCGGGTCCGACGGGGCTGGTGAAGAGCAGGACCCACGACGGACTTCCGAGGTGCTGGTCTGGAGAG  
 CGGCAGGAAGGAGAGCCGCGCGCGGGGGCGACAGCGCGGGGGCGCGGGGGGGCGCCGAACCCGGGG  
 CCCTCCAGAGCCGAGGGCCCGCGGGGGCTCCCTCGCCAGCAGCTCGGTGGCAAGTCGCACAGCTTCT  
 TCTCGTCTGAAGAAGAAGCGGCGCTCGGAAAACGGCAAGGGAGAGCCTGTGGACGCGAGCAAGCCGG  
 CGGCAAAACAAAGCGGGGCTGCGGGGGCTGTTCAGCGCATGCGCTGGCACAGGAAAGACAAGCGGGCC  
 AAGGCGGAGGCCGCGGAGGGGCGCGCGCCCGGGGGCGGCTTGATCCTACCCGGCTCGCTACCGCCAGCC  
 TGGAGTGCCTAAGGAGGAGACGCCAGAGCCGCGCGGAGCCGAGGAGCCAGCCAGGACGCCCCGCG  
 AGACCCAGCAGGTGAGCCCGAGGGGAGAGGAGGTGCCCGCCCGCCGACCGCGCCCGAGCGCGGAGC  
 TGCCGAGAGGCAGAGGGCCTCGCGCACGCCGGCGACACCGCGCCCGGGGAGAGGACGCCGCGGGGCATC  
 GGCGCGCCGAGCCGGGGCCCGGGAGGTCCGCACGGCAGAGGACGCTTCCAGGACGGGGCCGTTCCCGT  
 AAAGACGGTCCCCTTGTGACTCCGAAGCGGCGAGCGCGGGCGCCCGCCCGCCAGACCCTGCCTCT  
 GTCGATCCACCCTCAGACCCGTCGGCAGATCGTATTTGTTGATGTTTCTGACGTGACTTCACTGAAAA  
 GCTTTGACTCTTACAGGCTGTGGAGATATTATTGCAGACCAAGAGGAAGAGGCAGGTCCAGCTGTGA  
 CAAGCATGTCCCGGGCCAGGCAAGCCGGCTCTGTCTAAAAAGAACCCCGCGTGGTGGCTACCGAGAG  
 GCGGGGAAGAGATGGCCAGCCCGGACGAGGTGGACGACACCTATCTACAGGAGTTCTGGGACATGCTCTC  
 CCAGACCGAGGAGCAGGGACCCGAGCCCGAGGAGGCGCGGCTAAGGTGGCAGCTGCGCTGGAAACCAAG  
 GTGGTGCCCGAGACCCCAAGACACCAGGTGTGTGGAAGCGCCAAGGACGCGTCTCGG

AG**CGGACCG**ACGCGTACGCGGCCGCTCGAG – GFP Tag – GTTTAA

**Protein Sequence:**

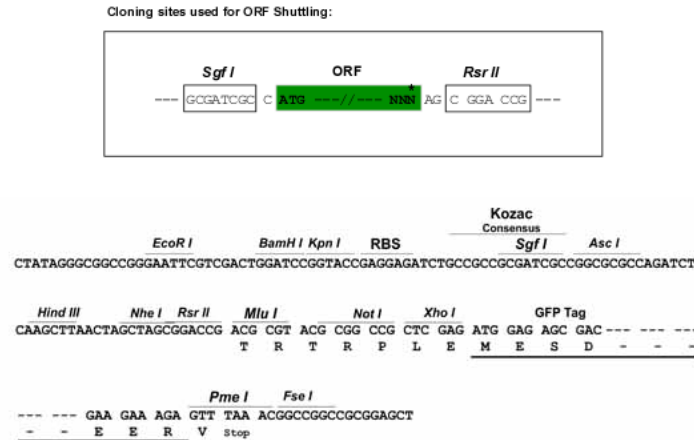
>RG207378 representing NM\_152704  
 Red=Cloning site Green=Tags(s)

METSRSRGGGAVSERGGAGASVGVCRRAEAGAGTGTLAADMDLHCDCAAETPAAEPPSGKINKAAFKL  
 FKKRKSGGTMPSTIFGVKNKGDGKSSGPTGLVRSRTHDGLAEVLVLESGRKEEPRGGGDSGGGGGGRPNPG  
 PSRAAGPGGGSLASSVAKSHSFFSLLKKNRSENGKGEVVDASKAGGKQKRGLRGLFSGMRWHRKDKRA  
 KAEAAEGRAPGGGLILPGSLTASLECVKEETPRAAREPEEPSQDAPRDPAGEPAGGEEVPAPADRAPARS  
 CREAEGLAHAGDTGARGEDAAGHRRRAEPGPGEVRTAEDASRTGAVPVKTVPLVDEGGSGRAPAAPDPAS  
 VDPPSDPSADRICLMFSDVTSLSKSFDSL TGCGDIIADQEEEAGPSCDKHVPGPKPALSKKNPGVVAYQE  
 AGKRWPARTRWTTPIYRSSGTCSPRPRSRDPSRRARLRWQLRWKPRWCPRPKTPGVWKRPRTRPR

SGP**TRRRLE** – GFP Tag – V

**Restriction Sites:**

Sgfl-RsrII

**Cloning Scheme:**


**ACCN:** NM\_152704

**ORF Size:** 2013 bp

**OTI Disclaimer:** The molecular sequence of this clone aligns with the gene accession number as a point of reference only. However, individual transcript sequences of the same gene can differ through naturally occurring variations (e.g. polymorphisms), each with its own valid existence. This clone is substantially in agreement with the reference, but a complete review of all prevailing variants is recommended prior to use. [More info](#)

**OTI Annotation:** This clone was engineered to express the complete ORF with an expression tag. Expression varies depending on the nature of the gene.

**Components:** The ORF clone is ion-exchange column purified and shipped in a 2D barcoded Matrix tube containing 10ug of transfection-ready, dried plasmid DNA (reconstitute with 100 ul of water).

**Reconstitution Method:**

1. Centrifuge at 5,000xg for 5min.
2. Carefully open the tube and add 100ul of sterile water to dissolve the DNA.
3. Close the tube and incubate for 10 minutes at room temperature.
4. Briefly vortex the tube and then do a quick spin (less than 5000xg) to concentrate the liquid at the bottom.
5. Store the suspended plasmid at -20°C. The DNA is stable for at least one year from date of shipping when stored at -20°C.

**RefSeq:** [NM\\_152704.2](#), [NP\\_689917.2](#)

**RefSeq Size:** 3198 bp

**RefSeq ORF:** 2016 bp

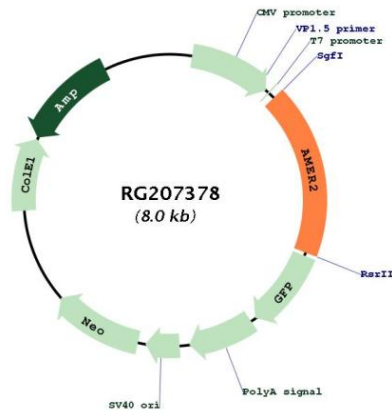
**Locus ID:** 219287

**UniProt ID:** [Q8N7J2](#)

**Cytogenetics:** 13q12.13

**Gene Summary:** Negative regulator of the canonical Wnt signaling pathway involved in neuroectodermal patterning. Acts by specifically binding phosphatidylinositol 4,5-bisphosphate (PtdIns(4,5)P2), translocating to the cell membrane and interacting with key regulators of the canonical Wnt signaling pathway, such as components of the beta-catenin destruction complex. [UniProtKB/Swiss-Prot Function]

**Product images:**



Circular map for RG207378