

## Product datasheet for **RG207348**

### TSLP (NM\_138551) Human Tagged ORF Clone

#### Product data:

**Product Type:** Expression Plasmids  
**Product Name:** TSLP (NM\_138551) Human Tagged ORF Clone  
**Tag:** TurboGFP  
**Symbol:** TSLP  
**Mammalian Cell Selection:** Neomycin  
**Vector:** pCMV6-AC-GFP (PS100010)  
**E. coli Selection:** Ampicillin (100 ug/mL)  
**ORF Nucleotide Sequence:** >RG207348 representing NM\_138551  
 Red=Cloning site Blue=ORF Green=Tags(s)

TTTTGTAATACGACTCACTATAGGGCGGCCGGAATTCGTCGACTGGATCCGGTACCGAGGAGATCTGCC  
 GCC**CGATCGCC**

ATGAAGTGTTTAGGGCAAAGCAAAAAGGAGGAAGTTTCTTTCAGGAAAATCTTCATCTTACAACCTGTAG  
 GGCTGGTGTTAACTTACGACTTCACTAACTGTGACTTTGAGAAGATTAAGCAGCCTATCTCAGTACTAT  
 TTCTAAAGACCTGATTACATATATGAGTGGGACCAAAAGTACCGAGTTCAACAACACCGTCTCTTGTAGC  
 AATCGGCCACATTGCCTTACTGAAATCCAGAGCCTAACCTTCAATCCCACCGCCGGCTGCGCGTCGCTCG  
 CCAAAGAAATGTTGCCATGAAAATAAGGCTGCCTTAGCTATCTGGTGCCAGGCTATTCGAAACTCA  
 GATAAATGCTACTCAGGCAATGAAGAAGAGGAGAAAAAGGAAAGTCAACAACCAATAAATGTCTGGAACAA  
 GTGTCACAATTACAAGGATTGTGGCGTCTTCAATCGACCTTTACTGAAACAACAG

**ACGCGTACGCGGCCGCTCGAG** - GFP Tag - GTTTAA

**Protein Sequence:** >RG207348 representing NM\_138551  
 Red=Cloning site Green=Tags(s)

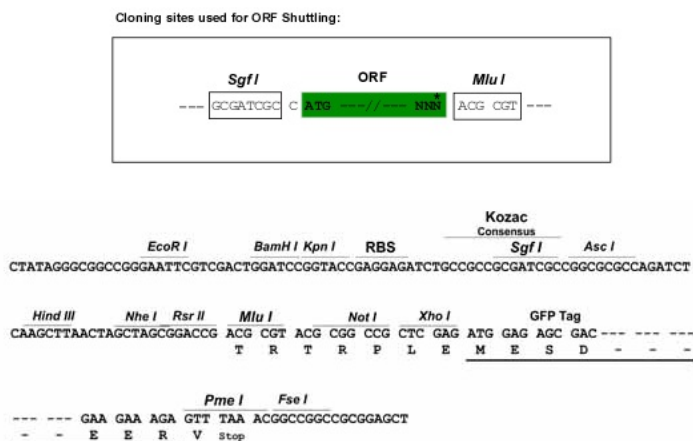
MKCLGQSKKEEVSFRKIFILQLVGLVLYDFTNCFEIKAAAYLSTISKDLITYMSGTKSTEFNNTVSCS  
 NRPCHLTEIQSLTFNPTAGCASLAKEMFAMKTKAALAIWCPGYSETQINATQAMKKRRKRKVTNNKCLEQ  
 VSQQLQLWRRFNRPLKQQ

**TRTRPLE** - GFP Tag - V

**Restriction Sites:** SgfI-MluI



[View online »](#)

**Cloning Scheme:**


**ACCN:** NM\_138551

**ORF Size:** 477 bp

**OTI Disclaimer:** Due to the inherent nature of this plasmid, standard methods to replicate additional amounts of DNA in *E. coli* are highly likely to result in mutations and/or rearrangements. Therefore, OriGene does not guarantee the capability to replicate this plasmid DNA. Additional amounts of DNA can be purchased from OriGene with batch-specific, full-sequence verification at a reduced cost. Please contact our customer care team at [custsupport@origene.com](mailto:custsupport@origene.com) or by calling 301.340.3188 option 3 for pricing and delivery.

The molecular sequence of this clone aligns with the gene accession number as a point of reference only. However, individual transcript sequences of the same gene can differ through naturally occurring variations (e.g. polymorphisms), each with its own valid existence. This clone is substantially in agreement with the reference, but a complete review of all prevailing variants is recommended prior to use. [More info](#)

**OTI Annotation:** This clone was engineered to express the complete ORF with an expression tag. Expression varies depending on the nature of the gene.

**Components:** The ORF clone is ion-exchange column purified and shipped in a 2D barcoded Matrix tube containing 10ug of transfection-ready, dried plasmid DNA (reconstitute with 100 ul of water).

**Reconstitution Method:**

1. Centrifuge at 5,000xg for 5min.
2. Carefully open the tube and add 100ul of sterile water to dissolve the DNA.
3. Close the tube and incubate for 10 minutes at room temperature.
4. Briefly vortex the tube and then do a quick spin (less than 5000xg) to concentrate the liquid at the bottom.
5. Store the suspended plasmid at -20°C. The DNA is stable for at least one year from date of shipping when stored at -20°C.

**RefSeq:** [NM\\_138551.2](#), [NP\\_612561.1](#)

**RefSeq Size:** 2420 bp

**RefSeq ORF:** 192 bp

**Locus ID:** 85480

**UniProt ID:** [Q969D9](#)

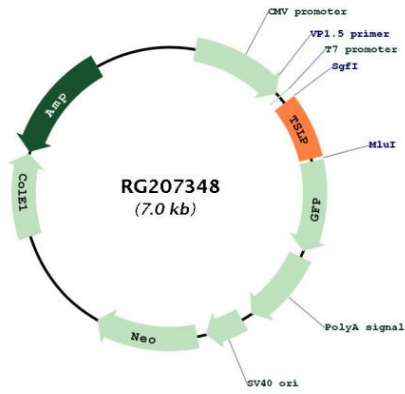
**Cytogenetics:** 5q22.1

**Protein Families:** Druggable Genome

**Protein Pathways:** Cytokine-cytokine receptor interaction, Jak-STAT signaling pathway

**Gene Summary:** This gene encodes a hemopoietic cytokine proposed to signal through a heterodimeric receptor complex composed of the thymic stromal lymphopoietin receptor and the IL-7R alpha chain. It mainly impacts myeloid cells and induces the release of T cell-attracting chemokines from monocytes and enhances the maturation of CD11c(+) dendritic cells. The protein promotes T helper type 2 (TH2) cell responses that are associated with immunity in various inflammatory diseases, including asthma, allergic inflammation and chronic obstructive pulmonary disease. The protein is therefore considered a potential therapeutic target for the treatment of such diseases. In addition, the shorter (predominant) isoform is an antimicrobial protein, displaying antibacterial and antifungal activity against *B. cereus*, *E. coli*, *E. faecalis*, *S. mitis*, *S. epidermidis*, and *C. albicans*. Alternative splicing of this gene results in multiple transcript variants. [provided by RefSeq, Jul 2020]

Product images:



Circular map for RG207348