

Product datasheet for **RG207328**

SFRP1 (NM_003012) Human Tagged ORF Clone

Product data:

Product Type:	Expression Plasmids
Product Name:	SFRP1 (NM_003012) Human Tagged ORF Clone
Tag:	TurboGFP
Symbol:	SFRP1
Synonyms:	FRP; FRP-1; FRP1; FrzA; SARP2
Mammalian Cell Selection:	Neomycin
Vector:	pCMV6-AC-GFP (PS100010)
E. coli Selection:	Ampicillin (100 ug/mL)
ORF Nucleotide Sequence:	>RG207328 representing NM_003012 Red=Cloning site Blue=ORF Green=Tags(s)

TTTTGTAATACGACTCACTATAGGGCGGCCGGAATTCGTCGACTGGATCCGGTACCGAGGAGATCTGCC
GCC**CGATCGC**

ATGGGCATCGGGCGCAGCGAGGGGGCCGCCGCGGGCAGCCCTGGGCGTGCTGCTGGCGCTGGGCGCGG
CGCTTCTGGCCGTGGGCTCGGCCAGCGAGTACGACTACGTGAGCTTCCAGTCGGACATCGGCCGTACCA
GAGCGGGCGCTTCTACACCAAGCCACCTCAGTGCCTGGACATCCCGCGGACCTGCGGCTGTGCCACAAC
GTGGGCTACAAGAAGATGGTGTGCCAACCTGCTGGAGCACGAGACCATGGCGGAGGTGAAGCAGCAGG
CCAGCAGCTGGGTGCCCTGCTCAACAAGAACTGCCACGCGGCACCCAGGTCTTCTCTGCTCGCTCTT
CGCGCCCGTCTGCCTGGACCGGCCATCTACCCGTGTGCTGGCTCTGCGAGGCCGTGCGCGACTCGTGC
GAGCCGGTCATGCAGTTCTTCGGCTTCTACTGGCCGAGATGCTTAAGTGTGACAAGTTCCTCCGAGGGGG
ACGTCTGCATCGCCATGACGCGGCCCAATGCCACCGAAGCCTCCAAGCCCAAGGCACAACGGTGTGTCC
TCCCTGTGACAACGAGTTGAAATCTGAGGCCATCATTGAACATCTCTGTGCCAGCGAGTTTGCACTGAGG
ATGAAAATAAAGAAGTAAAAAAGAAATGGCGACAAGAAGATTGTCCCAAGAAGAAGAAGCCCTGA
AGTTGGGGCCCATCAAGAAGAAGGACCTGAAGAAGCTTGTGCTGTACCTGAAGAATGGGGCTGACTGTCC
CTGCCACGCTGGACAACCTCAGCCACCACTTCTCATCATGGGCCGCAAGGTGAAGAGCCAGTACTTG
CTGACGGCCATCCACAAGTGGGACAAGAAAAACAAGGAGTTCAAAACTTCATGAAGAAAATGAAAAACC
ATGAGTGCCCCACCTTTCAGTCCGTGTTAAG

ACGCGTACGCGGCCGCTCGAG - GFP Tag - GTTTAA



[View online »](#)

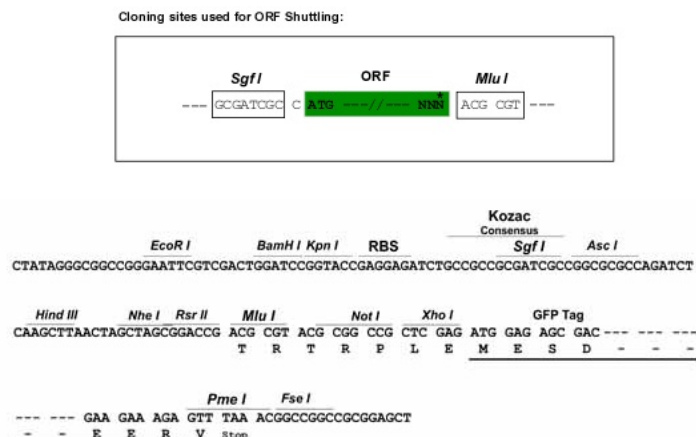
Protein Sequence: >RG207328 representing NM_003012
 Red=Cloning site Green=Tags(s)

MGIGRSEGGRRGAALGVLLALGAALLAVGSASEYDYVSFQSDIGPYQSGRFYTKPPQCVDIPADLRLCHN
 VGYKKMVLPNLLEHETMAEVKQQASSWVPLLNNKNCHAGTQVFLCSLFAPVCLDRPIYPCRWLCEAVRDSC
 EPVMQFFGFYWPEMLKCDKFPEGDVCIAMTPPNATEASKPQGTTCPPCDNELKSEAIIEHLCASEFALR
 MKIKEVKKENGDKKIVPKKKKPLKLGPIKKKDLKKLVLYLKNGADCPCHQLDNLSHHFLIMGRKVKSQYL
 LTAIHKWDKKNEFKNFMKKMKNHECPTFQSVFK

TRTRPLE – GFP Tag – V

Restriction Sites: SgfI-MluI

Cloning Scheme:



ACCN: NM_003012

ORF Size: 942 bp

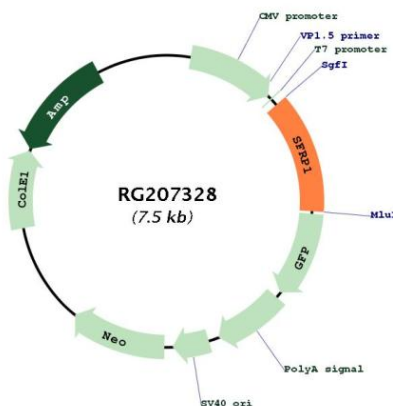
OTI Disclaimer: The molecular sequence of this clone aligns with the gene accession number as a point of reference only. However, individual transcript sequences of the same gene can differ through naturally occurring variations (e.g. polymorphisms), each with its own valid existence. This clone is substantially in agreement with the reference, but a complete review of all prevailing variants is recommended prior to use. [More info](#)

OTI Annotation: This clone was engineered to express the complete ORF with an expression tag. Expression varies depending on the nature of the gene.

Components: The ORF clone is ion-exchange column purified and shipped in a 2D barcoded Matrix tube containing 10ug of transfection-ready, dried plasmid DNA (reconstitute with 100 ul of water).

Reconstitution Method:	<ol style="list-style-type: none"> 1. Centrifuge at 5,000xg for 5min. 2. Carefully open the tube and add 100ul of sterile water to dissolve the DNA. 3. Close the tube and incubate for 10 minutes at room temperature. 4. Briefly vortex the tube and then do a quick spin (less than 5000xg) to concentrate the liquid at the bottom. 5. Store the suspended plasmid at -20°C. The DNA is stable for at least one year from date of shipping when stored at -20°C.
RefSeq:	NM_003012.5
RefSeq Size:	4465 bp
RefSeq ORF:	945 bp
Locus ID:	6422
UniProt ID:	Q8N474
Cytogenetics:	8p11.21
Domains:	FRI, NTR
Protein Families:	Adult stem cells, Cancer stem cells, Druggable Genome, ES Cell Differentiation/IPS, Secreted Protein, Stem cell relevant signaling - Wnt Signaling pathway, Transmembrane
Protein Pathways:	Wnt signaling pathway
Gene Summary:	This gene encodes a member of the SFRP family that contains a cysteine-rich domain homologous to the putative Wnt-binding site of Frizzled proteins. Members of this family act as soluble modulators of Wnt signaling; epigenetic silencing of SFRP genes leads to deregulated activation of the Wnt-pathway which is associated with cancer. This gene may also be involved in determining the polarity of photoreceptor cells in the retina. [provided by RefSeq, Sep 2009]

Product images:



Circular map for RG207328