

Product datasheet for **RG207322**

MFSD4 (MFSD4A) (NM_181644) Human Tagged ORF Clone

Product data:

Product Type:	Expression Plasmids
Product Name:	MFSD4 (MFSD4A) (NM_181644) Human Tagged ORF Clone
Tag:	TurboGFP
Symbol:	MFSD4
Synonyms:	MFSD4; UNQ3064
Mammalian Cell Selection:	Neomycin
Vector:	pCMV6-AC-GFP (PS100010)
E. coli Selection:	Ampicillin (100 ug/mL)



[View online »](#)

ORF Nucleotide Sequence:

>RG207322 representing NM_181644
 Red=Cloning site Blue=ORF Green=Tags(s)

TTTTGTAATACGACTCACTATAGGGCGGCCGGGAATTCGTCGACTGGATCCGGTACCGAGGAGATCTGCC
 GCC**CGCATCGCC**

ATGGGCTGCGACGGCCGCGTGTGCGGGCTGCTCCGCCAACCTGCAGCCACGCTCACCTACTGGAGCG
 TCTTCTCAGCTTCGGCCTGTGCATCGCCTTCTGGGGCCACGCTGCTGGACCTGCGCTGTGAGACGCA
 CAGCTCGCTGCCAGATCTCCTGGGTCTTCTTCTCGCAGCAGCTCTGCCTCCTGCTGGGAGCGCCCTC
 GGGGGCGTCTTCAAAGGACCCTGGCCAGTCACTATGGGCCCTGTTACCTCCTCTCTGGCCATCTCCC
 TGGTGTGGCGTCATCCCCTTCTGCCGACGTGAAGGTGCTGGCCTCAGTCATGGCGTGGCGGGCTT
 GGCCATGGGCTGCATCGACACCGTGGCCAAATGCAGCTGGTAAGGATGTACCAGAAGGACTCGGCCGTC
 TTCTCCAGGTGCTCCATTTCTCGTGGGCTTTGGTGTCTGCTGAGCCCCCTTATTGCTGACCCTTTCC
 TGTCTGAGGCCAACTGCTTGCCTGCCAATAGCACGGCCAAACCACCTCCCGAGGCCACCTGTTCCATGT
 CTCAGGGTGTGGCCAGCACCGTAGATGCCAAGCCTTGGTCCAACCAGACGTTCCAGGGCTGACT
 CCAAAGGACGGGGCAGGGACCCGAGTGTCTATGCCTTCTGGATCATGGCCATCATCAATCTCCAGTGC
 CCATGGCTGTGCTGATGCTGTGCTGCTCAAGGAGCGGCTGCTGACCTGCTGTCCCCAGAGGAGGCCCTGT
 TCTGTCTGCTGATGAGCTTGCCTTGGAGACACAGCCTCCTGAGAAGGAAGATGCCTCCTCACTGCCCCCA
 AAGTTTCACTCACACCTAGGGCATGAGGACCTGTTGAGCTGCTGCCAAAGGAAGAACCCTCAGAGGAGCCC
 CTTATTCCTTCTTTGCCATCCACATCACGGCCGCCCTGGTCTGTTTATGACGGATGGGTTGACGGGTGC
 CTATTCGCCCTTCGTGTACAGCTATGCTGTGGAGAAGCCCCTGTCTGTGGGACACAAGGTGGCTGGCTAC
 CTCCCCAGCCTCTTCTGGGGCTTATCACACTGGCCGGCTCCTCTCCATTCCCATATCCTCAAGAATGA
 AGCCGGCCACCATGGTTTTTCATCAACGTGGTGGCGTGGTGGTGCAGTTCTGGTGTCTATTTTCTC
 CTACAACGTCTTCTTCTGTTCTGTTGGGGACGGCAAGCCTGGGCCTGTTTCTCAGCAGCACCTTTCCAGC
 ATGCTGGCTACACGGAGGACTCGCTGCAGTACAAGGCTGTGCAACCACAGTGTGTTGACAGGGGCGAG
 GAGTTGGCGAGATGGTGTGAGATGCTGGTGGTTCGATATTCCAGGCTCAGGGCAGCTATAGTTTCT
 GGTCTGTGGCGTATCTTTGGTGTCTGGCTTTTACCTTCTATATCTTGCTCCTGTTTTTCCACAGGATG
 CACCCTGGACTCCCATCAGTTCCTACCCAAGACAGATCAATTGGAATGGAAAACCTCTGAGTGTACCAGA
 GG

ACGCGTACGCGGCCGCTCGAG – GFP Tag – GTTTAA

Protein Sequence:

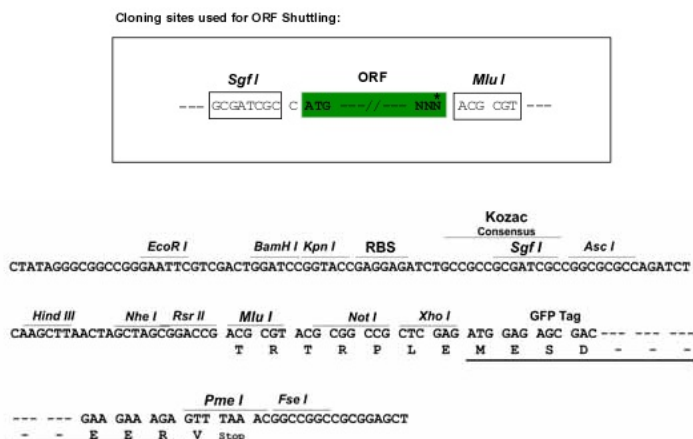
>RG207322 representing NM_181644
 Red=Cloning site Green=Tags(s)

MGCDGRVSGLLRRNLQPTLTYWSVFFSFLGCLIAFLGPTLLDLRCQTHSSLPQISWVFFSQQLCLLLGSAL
 GGVEFKRTLAQSLWALFTSSLAISLVFAVIPFCRDVKVLASVMALAGLAMGCIDTVANMQLVVMYQKDSAV
 FLQVLHFFVGFALLSPLIADPFLSEANCLPANSTANTTSRGHLFHVSRVLGQHHVDAKPWSNQTFFPGLT
 PKDGAGTRVSYAFWIMAIINLPVPMVLMMLSKERLLTCCPQRRPLLLSADELALETQPPEKEDASSLPP
 KFQSHLGHEDLFSCCQRKNLRGAPYSFFAIHITAALVLFMTDGLTGAYSFAVYSYAVEKPLSVGHKVVAGY
 LPSLFWGFITLGRLLSIPISSRMKPMVMFINVVGVVVTFLVLLIFSYNVVFLVGTASLGLFLSSTFPS
 MLAYTEDSLQYKGCATTVLVTGAGVGMVLMQLVGSIFQAQGSYSFLVCGVIFGCLAFTFYILLFFHRM
 HPGLPSVPTQDRSIGMENSECYQR

TRTRPLE – GFP Tag – V

Restriction Sites:

Sgfl-MluI

Cloning Scheme:


ACCN: NM_181644

ORF Size: 1542 bp

OTI Disclaimer: The molecular sequence of this clone aligns with the gene accession number as a point of reference only. However, individual transcript sequences of the same gene can differ through naturally occurring variations (e.g. polymorphisms), each with its own valid existence. This clone is substantially in agreement with the reference, but a complete review of all prevailing variants is recommended prior to use. [More info](#)

OTI Annotation: This clone was engineered to express the complete ORF with an expression tag. Expression varies depending on the nature of the gene.

Components: The ORF clone is ion-exchange column purified and shipped in a 2D barcoded Matrix tube containing 10ug of transfection-ready, dried plasmid DNA (reconstitute with 100 ul of water).

Reconstitution Method:

1. Centrifuge at 5,000xg for 5min.
2. Carefully open the tube and add 100ul of sterile water to dissolve the DNA.
3. Close the tube and incubate for 10 minutes at room temperature.
4. Briefly vortex the tube and then do a quick spin (less than 5000xg) to concentrate the liquid at the bottom.
5. Store the suspended plasmid at -20°C. The DNA is stable for at least one year from date of shipping when stored at -20°C.

RefSeq: [NM_181644.3](#)

RefSeq Size: 3347 bp

RefSeq ORF: 1545 bp

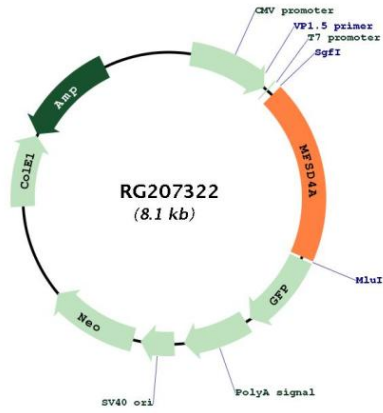
Locus ID: 148808

UniProt ID: [Q8N468](#)

Cytogenetics: 1q32.1

Protein Families: Transmembrane

Product images:



Circular map for RG207322