

Product datasheet for **RG207286**

LDLRAD3 (NM_174902) Human Tagged ORF Clone

Product data:

Product Type:	Expression Plasmids
Product Name:	LDLRAD3 (NM_174902) Human Tagged ORF Clone
Tag:	TurboGFP
Symbol:	LDLRAD3
Synonyms:	LRAD3
Mammalian Cell Selection:	Neomycin
Vector:	pCMV6-AC-GFP (PS100010)
E. coli Selection:	Ampicillin (100 ug/mL)
ORF Nucleotide Sequence:	>RG207286 representing NM_174902 Red=Cloning site Blue=ORF Green=Tags(s)

TTTTGTAATACGACTCACTATAGGGCGGCCGGAATTCGTCGACTGGATCCGGTACCGAGGAGATCTGCC
GCC**CGATCGCC**

ATGTGGCTGTGGGGCCGCTGTGCCTGCTGCTGAGCAGCGCCGCGGAGAGCCAGCTGCTCCCCGGGAACA
ACTTCACCAATGAGTGCAACATACCAGGCAACTTCATGTGCAGCAATGGACGGTGCATCCCGGGCGCCTG
GCAGTGTGACGGGCTGCCTGACTGCTTCGACAAGAGTGATGAGAAGGAGTGCCCCAAGGCTAAGTCGAAA
TGTGGCCCAACCTTCTCCCTGTGCCAGCGGCATCCATTGCATCATTGGTCGTTCCGGTGCAATGGGT
TTGAGGACTGTCCGATGGCAGCGATGAAGAGAACTGCACAGCAAACCTCTGCTTGTCTCCACCGCCC
CTACCACTGCAAGAACGGCCTCTGTATTGACAAGAGCTTCATCTGCGATGGACAGAATAACTGTCAAGAC
AACAGTGATGAGGAAAGCTGTGAAAGTTCTCAAGAACCCGGCAGTGGGCAGGTGTTTGTGACTTCAGAGA
ACCAACTTGTGTATTACCCAGCATCACCTATGCCATCATCGGCAGCTCCGTCATTTTTGTGCTGGTGGT
GGCCCTGCTGGCACTGGTCTTGCACCACCAGCGGAAGCGGAACAACCTCGTGACGCTGCCGTGCACCGG
CTGCAGCACCTGTGCTGCTGTCCCGCCTGGTGGTCTGGACCACCCCACTGCAACGTACCTACA
ACGTCAATAATGGCATCCAGTATGTGGCCAGCCAGGCGGAGCAGAATGCGTCGGAAGTAGGCTCCCCACC
CTCCTACTCCGAGGCCTTGCTGGACCAGAGGCCGCGTGGTATGACCTTCTCCACCGCCCTACTCTTCT
GACACGGAATCTCTGAACCAAGCCGACCTGCCCCCTACCGCTCCCGGTCCGGGAGTGCCAACAGTGCCA
GCTCCCAGGCAGCCAGCAGCCTCTGAGCGTGGAAGACACCAGCCGACGCCGCGGCGGCGAGCCTGGCCCCA
GGAGGGCACTGCTGAGCCAGGGACTCTGAGCCAGCCAGGGCACTGAAGAAGTA

ACGCGTACGCGGCCGCTCGAG - GFP Tag - GTTTAA



[View online »](#)

Protein Sequence: >RG207286 representing NM_174902
 Red=Cloning site Green=Tags(s)

```
MWLLGPLCLLLSSAAESQLLPGNNFTNECNIPGNFMCSNGRCIPGAWQCDGLPDCFDKSDEKECPKAKSK
CGPTFFPCASGIHCIIGRFRCNGFEDCPDGSDEENCTANPLLCTARYHCKNGLCIDKSFICDGGQNNCQD
NSDEESCESSQEPGSGQVFVTSENQLVYYPSITYAIIIGSSVIFVLVALLALVLHHQRKRNNLVTLPVHR
LQHPVLLSRLVLDHPHHCNVTYVNNNGIQYVASQAEQNASEVGSPPSYSEALLDQRPAWYDLPPPPYSS
DTESLNQADLPPYRSRSGSANSASSQAASSLLSVEDTSRSPGQPGPQEGTAEPRDSEPSQGTTEEY
```

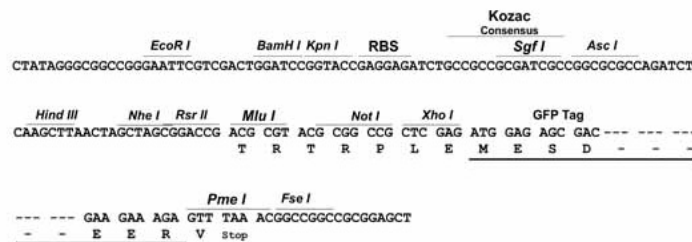
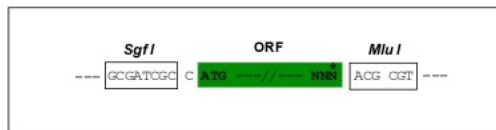
TRTRPLE - GFP Tag - V

Chromatograms: https://cdn.origene.com/chromatograms/ja1847_g05.zip

Restriction Sites: SgfI-MluI

Cloning Scheme:

Cloning sites used for ORF Shuttling:



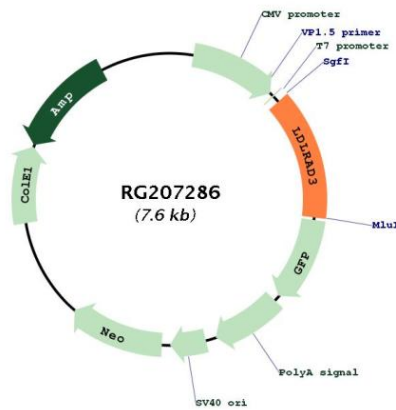
ACCN: NM_174902

ORF Size: 1035 bp

OTI Disclaimer: Due to the inherent nature of this plasmid, standard methods to replicate additional amounts of DNA in E. coli are highly likely to result in mutations and/or rearrangements. Therefore, OriGene does not guarantee the capability to replicate this plasmid DNA. Additional amounts of DNA can be purchased from OriGene with batch-specific, full-sequence verification at a reduced cost. Please contact our customer care team at custsupport@origene.com or by calling 301.340.3188 option 3 for pricing and delivery.

The molecular sequence of this clone aligns with the gene accession number as a point of reference only. However, individual transcript sequences of the same gene can differ through naturally occurring variations (e.g. polymorphisms), each with its own valid existence. This clone is substantially in agreement with the reference, but a complete review of all prevailing variants is recommended prior to use. [More info](#)

OTI Annotation:	This clone was engineered to express the complete ORF with an expression tag. Expression varies depending on the nature of the gene.
Components:	The ORF clone is ion-exchange column purified and shipped in a 2D barcoded Matrix tube containing 10ug of transfection-ready, dried plasmid DNA (reconstitute with 100 ul of water).
Reconstitution Method:	<ol style="list-style-type: none"> 1. Centrifuge at 5,000xg for 5min. 2. Carefully open the tube and add 100ul of sterile water to dissolve the DNA. 3. Close the tube and incubate for 10 minutes at room temperature. 4. Briefly vortex the tube and then do a quick spin (less than 5000xg) to concentrate the liquid at the bottom. 5. Store the suspended plasmid at -20°C. The DNA is stable for at least one year from date of shipping when stored at -20°C.
RefSeq:	<u>NM_174902.2</u> , <u>NP_777562.1</u>
RefSeq Size:	2969 bp
RefSeq ORF:	1038 bp
Locus ID:	143458
UniProt ID:	<u>Q86YD5</u>
Cytogenetics:	11p13
Protein Families:	Druggable Genome, Transmembrane
Gene Summary:	May influence APP processing, resulting in a decrease in sAPP-alpha production and increased amyloidogenic P3 peptide production.[UniProtKB/Swiss-Prot Function]

Product images:


Circular map for RG207286