

## Product datasheet for **RG207256**

### SLC35E4 (NM\_001001479) Human Tagged ORF Clone

#### Product data:

Product Type:	Expression Plasmids
Product Name:	SLC35E4 (NM_001001479) Human Tagged ORF Clone
Tag:	TurboGFP
Symbol:	SLC35E4
Mammalian Cell Selection:	Neomycin
Vector:	pCMV6-AC-GFP (PS100010)
E. coli Selection:	Ampicillin (100 ug/mL)
ORF Nucleotide Sequence:	>RG207256 representing NM_001001479 Red=Cloning site Blue=ORF Green=Tags(s)

TTTTGTAATACGACTCACTATAGGGCGGCCGGGAATTCGTCGACTGGATCCGGTACCGAGGAGATCTGCC  
GCC**CGATCGCC**

ATGTGCCGCTGCCCGCCGGAGCACCATGATGGCAGGATGACCTCAGCCGAAGTAGGAGCAGCAGCTGGTG  
GTGCTCAGGCGGCTGGGCCCCGAGTGGCCCCCTGGCAGCCCTCAGGCCCTCCGGCAGCCTGGCCGGGC  
CCGAGTGGCCATGGCAGCACTGGTGTGGCTGCTGGCGGGAGCCAGCATGTCAAGCCTCAACAAGTGGATC  
TTCACAGTGCACGGCTTTGGGCGGCCCTGCTGCTGTCGGCCCTGCACATGCTGGTGGCAGCCCTGGCAT  
GCCACCGGGGGCACGGCGCCCATGCCAGGCGGCACTCGCTGCCGAGTCTACTGCTCAGTCTCACCTT  
TGGCACGTCCATGGCCTGCGGCAACGTGGGCCTAAGGGCTGTGCCCTGGACCTGGCACAACTGGTTACT  
ACCACCACACCTCTGTTACCCCTGGCCCTGTCGGCGCTGCTGCTGGGCCCGCCACCACCCACTTCAGT  
TGGCCGCCATGGGTCCGCTCTGCCTGGGGCCGCTGCAGCCTGGCTGGAGAGTCCGGACACCCCTAC  
CGGCTGTGGTTCCTGCTCGCAGCCACCTGCCTCCGCGGACTCAAGTCGGTTCAGCAAAGTGCCTGCTG  
CAGGAGGAGAGGCTGGACGCGGTGACCTGCTTACGCCACCTCGCTGCCAGCTTCTGCCTGCTGGCGG  
GTGCAGCCCTGGTGTGGAGGCTGGCGTGGCCACCGCCACTGCTGGCGACTCTGCCTCTGGGCGT  
CATCCTGCTCAGTGCCTCCTGTCTGTTCTCTATAACCTGGCCAGCTTCTCCCTGCTGGCCCTCACCTCT  
GCCCTCACGTCCAGTCTGGCAACCTCACCGTGGTGGCAACCTCATCCTGTCCCGGCTGTTGTTTG  
GCAGCCGCTCAGTGCCTCAGCTACGTGGGCATCGCACTCACTTTTCAGGAATGTTCTTTACCACAA  
CTGCGAGTTCGTGGCCTCCTGGGCTGCCGTCGGGGCTGTGGCGAGGGACCAGCCAGCAAGGTCTT

**ACGCGT**ACGCGGCCGCTCGAG - GFP Tag - GTTTAA



[View online »](#)

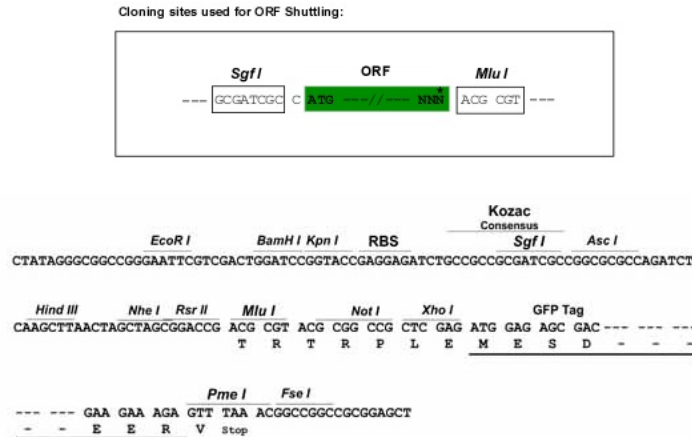
**Protein Sequence:** >RG207256 representing NM\_001001479  
 Red=Cloning site Green=Tags(s)

MCRCPPEHHDGRMTSAEVGAAAGGAQAAGPPEWPPGSPQALRQPGRARVAMAALVWLLAGASMSLKNKI  
 FTVHGFGRPLLSALHMLVAALACHRGARRPMPGGTRCRVLLLSLTFGTSMACGNVGLRAVPLDLAQLVT  
 TTTPLFTLALSALLLGRHHPLQLAAMGPLCLGAACSLAGEFRTPPTGCGFLLAATCLRGLKSVQQSALL  
 QEERLDAVTLLYATSLPSFCLLAGAALVLEAGVAPPPTAGDSRLWACILLSCLLSVLYNLASFLLALTS  
 ALTVHVLGNLTVVGNLILSRLLFGSRLSALSYVGIALTLSGMFLYHNCFVASWAARRGLWRRDQPSKGL

TRTRPLE - GFP Tag - V

**Restriction Sites:** SgfI-MluI

**Cloning Scheme:**



**ACCN:** NM\_001001479

**ORF Size:** 1050 bp

**OTI Disclaimer:** The molecular sequence of this clone aligns with the gene accession number as a point of reference only. However, individual transcript sequences of the same gene can differ through naturally occurring variations (e.g. polymorphisms), each with its own valid existence. This clone is substantially in agreement with the reference, but a complete review of all prevailing variants is recommended prior to use. [More info](#)

**OTI Annotation:** This clone was engineered to express the complete ORF with an expression tag. Expression varies depending on the nature of the gene.

**Components:** The ORF clone is ion-exchange column purified and shipped in a 2D barcoded Matrix tube containing 10ug of transfection-ready, dried plasmid DNA (reconstitute with 100 ul of water).

**Reconstitution Method:**

1. Centrifuge at 5,000xg for 5min.
2. Carefully open the tube and add 100ul of sterile water to dissolve the DNA.
3. Close the tube and incubate for 10 minutes at room temperature.
4. Briefly vortex the tube and then do a quick spin (less than 5000xg) to concentrate the liquid at the bottom.
5. Store the suspended plasmid at -20°C. The DNA is stable for at least one year from date of shipping when stored at -20°C.

**Note:** Plasmids are not sterile. For experiments where strict sterility is required, filtration with 0.22um filter is required.

**RefSeq:** [NM\\_001001479.4](#)

**RefSeq Size:** 2542 bp

**RefSeq ORF:** 1053 bp

**Locus ID:** 339665

**UniProt ID:** [Q6ICL7](#)

**Cytogenetics:** 22q12.2

**Protein Families:** Transmembrane

**Gene Summary:** Putative transporter.[UniProtKB/Swiss-Prot Function]

### Product images:



Circular map for RG207256