

Product datasheet for **RG207242**

ZMYM1 (NM_024772) Human Tagged ORF Clone

Product data:

Product Type:	Expression Plasmids
Product Name:	ZMYM1 (NM_024772) Human Tagged ORF Clone
Tag:	TurboGFP
Symbol:	ZMYM1
Synonyms:	MYM
Mammalian Cell Selection:	Neomycin
Vector:	pCMV6-AC-GFP (PS100010)
E. coli Selection:	Ampicillin (100 ug/mL)



[View online »](#)

ORF Nucleotide Sequence:

>RG207242 representing NM_024772
 Red=Cloning site Blue=ORF Green=Tags(s)

TTTTGTAATACGACTCACTATAGGGCGGCCGGAATTCGTCGACTGGATCCGGTACCGAGGAGATCTGCC
 GCC**CGCATCGCC**

ATGAAAGAACCACCTTTTAGGTGGTGTGAGTGTGACAAGGCAGTGGCATCACAGCTGGGGCTGCTAGATGAAA
 TTAAGACAGAACCCGACAATGCTCAAGAGTATTGTCATAGGCAACAGTCCAGAACTCAGGAGAATGAACT
 GAAAAATAATGCTGTGTTTTAGAGAGTCTTACAGTTGACTGCAGGCATTAGCTTTCTCTGGCATCA
 TCTGGCGTGAATAAAATGCTTCCTTCACTTTCAACCACAGCTATTAGGTTTCTGTGCTGGTTGTAAAA
 AAATTCTCAGAAGGGGCAAACTGCTTATCAGAGGAAAGGATCTGCTCAACTTTTCTGCTCCATACCATG
 CATCACTGAATACATTTTCATCTGCCAGTTCACCAGTTCCTTCTAAGAGAAGTGTTCAAACTGCTCAAAA
 GACATTTTAAATCCAAGGATGTGATTAGTGTCCAGTGGAAAGACTACCTCTTGCAAAACTTTTTGCA
 GCCTATCTTGTCTTTCATCATATGAAGAAAAAGAAAACCATTTGTTACCATATGTAATAAGCATTTT
 GACCAAGTGCAGCATGTCCAGAAGACTGCTATTATTCAGTATGAAGTAAATACCAAAATGTGAAACAT
 AATCTTTGCAAGTAAATGCCTGCTTTCAAAGTTTCACTCTGCTAACAACCTTCATCATGAACTGCTGTGAGA
 ACTGTGGCACTTACTGTTACACCAGCTCTAGTCTGTCCACATACCTTCAGATGGAAGGACAGTCTCATT
 CTTAATAGTTCAAAGAGTATTACAGCATATAAGCAGAAACCTGCCAAACCACTTATATCTGTTCCCTTGC
 AAACCATTTGAAGCCCTCAGATGAAATGATTGAGACTACGAGTGAATTTGGGGAAGACAGAGCTTTTCTGCT
 CTATTAATTGTTTCTCTGCATACAGTAAAGCTAAGATGGAATCTTCTTCAGTAAAGTGTGTTTCTGTGGT
 GCATGATACTTCAACAGAGCTTCTTTCTCAAAGAAAGATACGACTCCAGTTATAAGCAATATAGTGTA
 TTGGCAGACACCGATGTTGCCTTGCCCATGAACACTGATGTCTTACAAGATACAGTTTCTTTCAGTAA
 CAGCAACAGCAGATGTCATTGTGGATCTTCTAAGAGTTCACCTAGTGAACCCAGTAAATGCTGTTGCTAG
 TAGTAGTACGGAACAGCCAAAGCGTTTACCATCTTCATCAGTATTTCAGTACAGATGCAATTTGTTCCAGT
 ACAGAAGTACAAAAAGACAATATGAAATCTATGAAATAAGTGTGAACTATGTCACCCAAAATGTACAT
 CCAAAGTACAAAAAGTTAAAGGTAATCACGAAGTATTAATAAATCTTGTGTGCAGATTTTGAGTGT
 GGAAAACAGTAAAAAGATGTGGCATTCTGTTATTCATGCCAGTGTCTGCCAAAAATATTTTAGCTGT
 GGAAGAGAGTCAATTTGCAACCCACGGAACCTTAATTGGAAAAAACCTGGAAAAATTCAGAAAGCATG
 AAAAAAGTGAATGCATTTGAAGTCAATTTGGAATTTGGAGAGAATACCAATTTTGTGATGGAGCTGTCAG
 TGACGATTTATCTATTTCGAAACAGATTGAGGGAAAATAAAAGTACCTAAAGCTTATAATTGAAAT
 ATTTTATTTCTTGAAAGCAGTGTACCTTAAGAGGAAACGACCAGTCACTTTCATCTGTGAATAAG
 GCAATTTTTAGAAATGTTAGAAATGAGAGCAAAAGATAAAGGAGAAGAAACATTTTCGACTTATGAATTC
 ACAAGTTGACTTCTATAACAGTACACAAATTCAAAGTATATTATCGAAATAATAAAGACTGAAATGTTG
 CAGGATATTGTGAATGAGATCAATGACTCCTCAGCATTTCATCATATGTGATGAGACAATCAATAGTG
 CCATGAAAGAACAGCTTTCAATTTGTGTAAGATACCCACAAAAATCATCAAAGGCATCTTAATTAAGGA
 AAGATCTTGGGTTTTGTTGATACTGAGGAGATGACTGGGACCCACTTACATAGGACTATCAAAACTTAT
 CTGCAGCAAAATGGAGTTGATATGGATAAAATACATGGCCAGGCCTATGATAGCACCCTAATTTGAAGA
 TAAAATTAATAAAATAGCAGCAGAATTCAGAAAGAAGAACCAAGAGCTTTATACATACATTGTTATGC
 ACATTTTTGGATTTATCAATAATTAGGTTTTGTAAGAAGTAAAAGAAGTCCGAAGTCTCAAAAACT
 CTCAGTTCTTTGTTCAACACTATTTGTATGTCTGGGAAAATGTTGGCAATTTTCGAAACATTTATAGGC
 TAAGTCAAAACAAAACATGCAAGAAACATATACAAATCATGTTGGACAGTCCATGATCGTACATTACT
 ATCTGTGATTGACAGTCTCCAGAGATTATTGAAACATTGGAAGTTATAGCAAGCCATTCTTCAAATACA
 AGTTTCGCCGATGAATTGAGTCAATTTGCTGACATTGGTTTCAAATTTGAATTTGCTTTTGTGTTGAAAT
 TCCTGTATCGAGTGTGAGTGTACAGGAATCTTTCAAAGAGCTTCAAATAAAACCATAGACATTTT
 TTCTTTGCTTCAAAAAAGCAATTTGGAATGTTTTATCATC

ACGCGTACGCGGCCGCTCGAG - GFP Tag - GTTTAA

Protein Sequence: >RG207242 representing NM_024772
 Red=Cloning site Green=Tags(s)

MKEPLLGGECDKAVASQLGLLDEIKTEPDNAQEYCHRQQSRTQENELKINAVFSESASQLTAGIQLSLAS
 SGVNMKMLPSVSTTAIQVSCAGCKKILQKGQTAYQRKGSALFCSIPCITEYISSASSPVPSKRTCSNCSK
 DILNPKDVISVQLEDTTSCKTFCSLSCLSSYEERKRPFTICTNSILTKCSMCQKTAIIQYEVKYQNVKH
 NLCNSACLSKFHSANNFIMNCCENCGTYCYTSSSLSHILQMEGQSHYFNSSKISITAYKQKPAKPLISVPC
 KPLKPSDEMIETTSDLGKTELFCSINCFAYSKAKMESSVSVSVVHDTSTELLSPKKDTPVISNIVS
 LADTDVALPIMNTDVLQDTVSSVTATADVIVDLKSSPSEPSNAVASSSTEQPSVSPSSSVFSQHAIGSS
 TEVQKDNMKSMMKISDELCHPKCTSKVQKVKGKRSIKKSCCADFECLNSKDVAFYCSQLFCQKYFSC
 GRESFATHGTSNWKKTLEKFRKHEKSEMHLKSLEFWREYQFCGAVSDDL SIHKSQIEGNKKYLKLIEN
 ILFLGKQCLPLRGNDQSVSSVKNKGNFLELLEMRADKGEETFRLMNSQVDFYNSTQIQSDIEIIEIKTEML
 QDIVNEINDSSAFSIIICDETINSAMKEQLSICVRYPQKSSKAILIKERFLGFVDTEEMTGTHLHRTIKTY
 LQQIGVMDKIHGQAYDSTTNLIKIFNKIAAEFKKEEPRALYIHCAHFLDLIIIRFCKEVKELRSALKT
 LSSLFNTICMSGEMLANFRNIYRLSQNKTCCKHISQSCWTVHDRITLLSVIDSLPEIETLEVIASHSSNT
 SFADELSHLLTLVSKFEFVCLKFLYRVL SVTGILSKELQNKTIIDIFSLSSKIEAILECFII

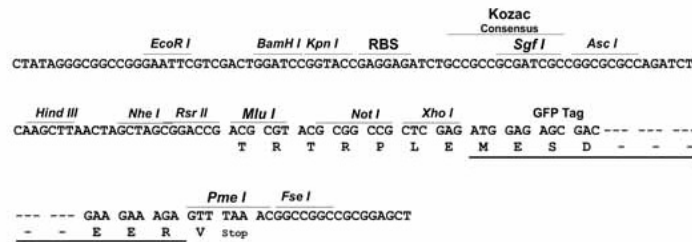
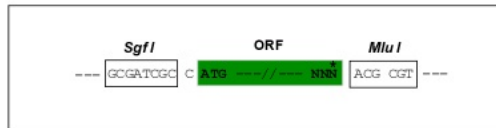
TRTRPLE - GFP Tag - V

Restriction Sites:

Sgfl-MluI

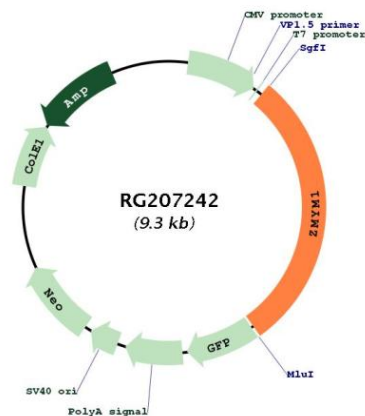
Cloning Scheme:

Cloning sites used for ORF Shuttling:



ACCN:	NM_024772
ORF Size:	3426 bp
OTI Disclaimer:	The molecular sequence of this clone aligns with the gene accession number as a point of reference only. However, individual transcript sequences of the same gene can differ through naturally occurring variations (e.g. polymorphisms), each with its own valid existence. This clone is substantially in agreement with the reference, but a complete review of all prevailing variants is recommended prior to use. More info
OTI Annotation:	This clone was engineered to express the complete ORF with an expression tag. Expression varies depending on the nature of the gene.
Components:	The ORF clone is ion-exchange column purified and shipped in a 2D barcoded Matrix tube containing 10ug of transfection-ready, dried plasmid DNA (reconstitute with 100 ul of water).
Reconstitution Method:	<ol style="list-style-type: none"> 1. Centrifuge at 5,000xg for 5min. 2. Carefully open the tube and add 100ul of sterile water to dissolve the DNA. 3. Close the tube and incubate for 10 minutes at room temperature. 4. Briefly vortex the tube and then do a quick spin (less than 5000xg) to concentrate the liquid at the bottom. 5. Store the suspended plasmid at -20°C. The DNA is stable for at least one year from date of shipping when stored at -20°C.
RefSeq:	NM_024772.2 , NP_079048.2
RefSeq Size:	4172 bp
RefSeq ORF:	3429 bp
Locus ID:	79830
UniProt ID:	Q5SVZ6
Cytogenetics:	1p34.3

Product images:



Circular map for RG207242