

Product datasheet for **RG207235**

ZNF785 (NM_152458) Human Tagged ORF Clone

Product data:

Product Type: Expression Plasmids
Product Name: ZNF785 (NM_152458) Human Tagged ORF Clone
Tag: TurboGFP
Symbol: ZNF785
Synonyms: ZNF688
Mammalian Cell Selection: Neomycin
Vector: pCMV6-AC-GFP (PS100010)
E. coli Selection: Ampicillin (100 ug/mL)
ORF Nucleotide Sequence: >RG207235 representing NM_152458
Red=Cloning site Blue=ORF Green=Tags(s)

TTTTGTAATACGACTCACTATAGGGCGGCCGGAATTCGTCGACTGGATCCGGTACCGAGGAGATCTGCC
GCC**CGATCGCC**

ATGGGGCCGCCCTGGCGCCGCGCCCGGCCACGTACCCGGGAGGCCGGGCCCGGAGGACGAGGGAAA
GCAGGCCGGCGCGGTGAGCTTCGCGGACGTGGCCGTGTACTTCTCTCCCGAGGAGTGGGAATGCCTGCG
GCCAGCGCAGAGGGCCCTGTACCGGGACGTGATCGGGAGACCTTCGGCCACCTGGCGCGCTGGGATTT
TCAGTTCCCAAACCCGCTTTTATCTCGTGGGTGGAAGGAGAAGTGGAGGCGTGGAGCCCGGAGGCCCAGG
ATCCCGACGGTGAGAGCTCTGCAGCTTTCAGCAGGGCCAAGGACAGGAAGCAGGATCCAGGGATGGGAA
TGAGGAGAAGGAAAGGCTGAAGAAGTGTCCAAAACAAAAGAGGTGGCGCATGAAGTGGCTGCAAGGAG
TGGTGGCCAGCGTCGCCTGCCAGAGTTCTGCAACCCTAGGCAGAGCCCATGAATCCCTGGCTCAAGG
ACACTCTGACCCGAAGACTGCCCACTCTTGCCAGACTGTGGCCGCACTTCAGCTACCCTTCCCTCCT
GGCCAGCCACCAGCGGTCCACTCCGGGGAGCGGCCCTTCTCCTGCGGCCAGTGTGAGGCGGTTTCTCC
CAGCGCAGGTACCTGCTCCAGCATCAGTTCATCCACACCGCGGAGAGCCCTACCCTGCCCGACTGCG
GGCGCCGCTTCCGCCAGAGGGTTCCTGGCTATCCACAGGCGGGCTCACACCGGGGAGAAGCCTTACGC
GTGCTCAGACTGCAAGAGTCGCTTCACTTACCCTACCTGCTGGCCATCCACCAGCGCAAGCACACGGGC
GAGAAGCCCTACAGCTGCCCGATTGCAGCCTCGTTCGCTACACCTCCCTGCTGGCCATCCACAGCG
GCATACACACCGCGGAGAAGCCCTACCCTGTCCTGACTGCGGCCGCGCTTACCTATTCTTCCCTCCT
CCTCAGTCACCGGCGCATTCACTCCGACAGCCGCCCTTCCCCTGCGTGGAGTGTGGGAAAGGCTTCAAG
CGCAAGACCGCCCTGGAAGCCATCGGTGGATCCACCGCTCCTGCAGCGAGAGGCGCGCTGGCAGCAGG
CCGTGGTGGGCGTTCAGAGCCCATCCCTGTTTTGGGAGGAAGGATCCCCAGTTCACTCCGGCACTT
TCCAGATATATTTCAAGAGTGTGGG

AGCGGACCGACGCGTACGCGGCCGCTCGAG - GFP Tag - GTTTAA



[View online »](#)

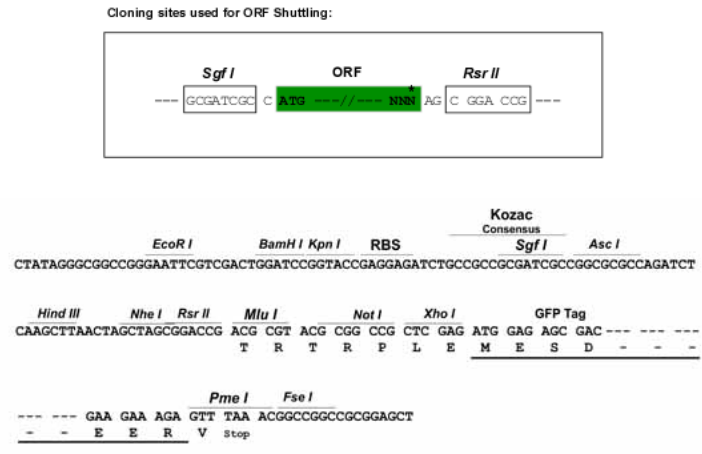
Protein Sequence: >RG207235 representing NM_152458
 Red=Cloning site Green=Tags(s)

MGPPLAPRPAHVPG EAGPRRTRESRPGAVSFADVAVYFSPEEWECLRPAQRALYRDVMRETFGHLGALGF
 SVPKPAFISWVEGEVEAWSPEAQDPDGESSAAF SRGQGQ EAGSRDGN EEKERLKKCPKQKEVAHEVAVKE
 WWP SVACPEFCNPRQSPMNPWLKDTL TRRLPHSCPD CGRNFSYP SLLASHQRVHSGERPFCGQCQARFS
 QRRYLLQH QFIHTG EKPYP C PDCGRRFRQ RGLAIHRR AHTG EKP YACSDCKSRFTYPYLLAIHQ RKHTG
 EKP YSCPDCSLRFAYTSL LAIHRR IHTG EKP YCPDCGRRFTYSLLLSHRR IHSRPFPCVECGKGFK
 RKTAL E AHRWIHRSCSERRAWQQA VVGRSEPIPV LGGKDP PVHFRHFPDIFQECC

SGP TRTRRLE - GFP Tag - V

Restriction Sites: SgfI-RsrII

Cloning Scheme:



ACCN: NM_152458

ORF Size: 1215 bp

OTI Disclaimer: The molecular sequence of this clone aligns with the gene accession number as a point of reference only. However, individual transcript sequences of the same gene can differ through naturally occurring variations (e.g. polymorphisms), each with its own valid existence. This clone is substantially in agreement with the reference, but a complete review of all prevailing variants is recommended prior to use. [More info](#)

OTI Annotation: This clone was engineered to express the complete ORF with an expression tag. Expression varies depending on the nature of the gene.

Components: The ORF clone is ion-exchange column purified and shipped in a 2D barcoded Matrix tube containing 10ug of transfection-ready, dried plasmid DNA (reconstitute with 100 ul of water).

Reconstitution Method:

1. Centrifuge at 5,000xg for 5min.
2. Carefully open the tube and add 100ul of sterile water to dissolve the DNA.
3. Close the tube and incubate for 10 minutes at room temperature.
4. Briefly vortex the tube and then do a quick spin (less than 5000xg) to concentrate the liquid at the bottom.
5. Store the suspended plasmid at -20°C. The DNA is stable for at least one year from date of shipping when stored at -20°C.

RefSeq: [NM_152458.7](#)

RefSeq Size: 3201 bp

RefSeq ORF: 1218 bp

Locus ID: 146540

UniProt ID: [A8K8V0](#)

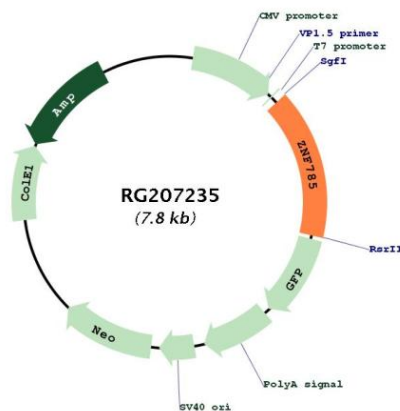
Cytogenetics: 16p11.2

Domains: KRAB, zf-C2H2

Protein Families: Transcription Factors

Gene Summary: May be involved in transcriptional regulation.[UniProtKB/Swiss-Prot Function]

Product images:



Circular map for RG207235