

## Product datasheet for **RG207234**

### **C19orf18 (NM\_152474) Human Tagged ORF Clone**

#### Product data:

**Product Type:** Expression Plasmids  
**Product Name:** C19orf18 (NM\_152474) Human Tagged ORF Clone  
**Tag:** TurboGFP  
**Symbol:** C19orf18  
**Mammalian Cell Selection:** Neomycin  
**Vector:** pCMV6-AC-GFP (PS100010)  
**E. coli Selection:** Ampicillin (100 ug/mL)  
**ORF Nucleotide Sequence:** >RG207234 representing NM\_152474  
 Red=Cloning site Blue=ORF Green=Tags(s)

TTTTGTAATACGACTCACTATAGGGCGGCCGGAATTCGTCGACTGGATCCGGTACCGAGGAGATCTGCC  
 GCC**CGATCGCC**

ATGGACAAGGTTTCAGAGTGGTTTCCTCATTTTGTTTTTGTTTTAATGGAATGCCAACTTCATTTATGCT  
 TGCCGTATGCAGATGGACTCCATCCCCTGAAACATAACAGGCTTACCAGGCAGTAAACGGTCAACAACC  
 ACCCAGAAACATCACAAAGAGCCCAAAGTGTTCTTTCTATAAAACCCAGTTGCCTGGGATTCAAGGGGCT  
 GCCTCGAGATCCACGGCTGCATCCCCTACGAACCCCATGAAATTCCTGAGGAATAAAGCAATAATTCGGC  
 ATAGACCTGCTCTTGTAAAGTAATTTAATTTTCGAGCGTAGCCCTCAGCATTGCCCTGATATGTGGGAT  
 GGCAATCTCCTATATGATATATCGACTGGCACAGGCTGAGGAAAGACAACAGCTCGAGTCACTTTATAAG  
 AACCTCAGGATACCGTTATTAGGAGATGAAGAAGAGGGCTCAGAGGACGAGGGTGTAGTCCACGCACCTAC  
 TTCCAGAGAACGAAAATGAGCTGGAAAAGTTTCATCCACTCAGTTATTATATCAAAAAGAAGCAAAAATAT  
 TAAGAAGAACTGAAGGAAGAGCAAACTCAGTAACAGAAAACAAAACAAAGAATGCGTACATAATGGA  
 AAAATGGAAGACTTG

**ACGCGTACGCGGCCGCTCGAG** - GFP Tag - GTTTAA

**Protein Sequence:** >RG207234 representing NM\_152474  
 Red=Cloning site Green=Tags(s)

MDKVQSGFLILFLMEQLHLCLPYADGLHPTGNITGLPGSKRSQPPRNITKEPKVFFHKTLPLGIQGA  
 ASRSTAASPTNPMKFLRNKAIIRHRPALVKVILISSVAFSIALICGMAISYMIYRLAQAEERQQLSLEYK  
 NLRIPLLGDEEEGSEDEGESTHLLPENENELEKFIHSVIIISKRSKNIKKLKEEQNSVTENKTKNASHNG  
 KMEDL

**TRTRPLE** - GFP Tag - V

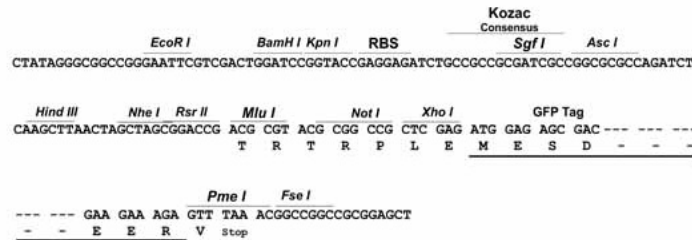
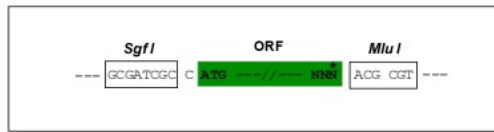


[View online »](#)

Restriction Sites: SgfI-MluI

Cloning Scheme:

Cloning sites used for ORF Shutting:



ACCN: NM\_152474

ORF Size: 645 bp

OTI Disclaimer: The molecular sequence of this clone aligns with the gene accession number as a point of reference only. However, individual transcript sequences of the same gene can differ through naturally occurring variations (e.g. polymorphisms), each with its own valid existence. This clone is substantially in agreement with the reference, but a complete review of all prevailing variants is recommended prior to use. [More info](#)

OTI Annotation: This clone was engineered to express the complete ORF with an expression tag. Expression varies depending on the nature of the gene.

Components: The ORF clone is ion-exchange column purified and shipped in a 2D barcoded Matrix tube containing 10ug of transfection-ready, dried plasmid DNA (reconstitute with 100 ul of water).

Reconstitution Method:

1. Centrifuge at 5,000xg for 5min.
2. Carefully open the tube and add 100ul of sterile water to dissolve the DNA.
3. Close the tube and incubate for 10 minutes at room temperature.
4. Briefly vortex the tube and then do a quick spin (less than 5000xg) to concentrate the liquid at the bottom.
5. Store the suspended plasmid at -20°C. The DNA is stable for at least one year from date of shipping when stored at -20°C.

RefSeq: [NM\\_152474.5](#)

RefSeq Size: 931 bp

RefSeq ORF: 648 bp

Locus ID: 147685

UniProt ID: [Q8NEA5](#)

Cytogenetics: 19q13.43

Protein Families: Transmembrane

**Product images:**



Circular map for RG207234