

Product datasheet for **RG207232**

TSSK2 (NM_053006) Human Tagged ORF Clone

Product data:

Product Type:	Expression Plasmids
Product Name:	TSSK2 (NM_053006) Human Tagged ORF Clone
Tag:	TurboGFP
Symbol:	TSSK2
Synonyms:	DGS-G; SPOGA2; STK22B; TSK2
Mammalian Cell Selection:	Neomycin
Vector:	pCMV6-AC-GFP (PS100010)
E. coli Selection:	Ampicillin (100 ug/mL)
ORF Nucleotide Sequence:	>RG207232 representing NM_053006 Red=Cloning site Blue=ORF Green=Tags(s)

TTTTGTAATACGACTCACTATAGGGCGCCGGGAATTCGTCGACTGGATCCGGTACCGAGGAGATCTGCC
GCC**CGATCGCC**

ATGGACGATGCCACAGTCCCTAAGGAAGAAGGGTTACATCGTAGGCATCAATCTTGCAAGGGTTCCTACG
CAAAAGTCAAATCTGCCTACTCTGAGCGCCTCAAGTTCAATGTGGCTGTCAAGATCATCGACCGCAAGAA
AACACCTACTGACTTTGTGGAGAGATTCCTTCTCGGGAGATGGACATCCTGGCAACTGTCAACCACGGC
TCCATCATCAAGACTTACGAGATCTTTGAGACCTCTGACGGACGGATCTACATCATCATGGAGCTTGGCG
TCCAGGGCGACCTCCTCGAGTTCATCAAGTGCCAGGGAGCCCTGCATGAGGACGTGGCACGCAAGATGTT
CCGACAGCTCTCCTCCGCGTCAAGTACTGCCACGACCTGGACATCGTCCACCGGACCTCAAGTGCAGAG
AACCTTCTCCTCGACAAGGACTTCAACATCAAGCTGTCTGACTTTGGCTTCTCCAAGCGCTGCCTGCGGG
ACAGCAATGGGCGCATCATCCTCAGCAAGACCTTCTGCGGGTCCGCGAGCATATGCAGCCCCGAGGTGCT
GCAGAGCATCCCCACCAGCCCAAGGTGTATGACATCTGGAGCCTGGGCGTGATCCTGTACATCATGGTC
TGCGGCTCCATGCCCTATGACGACTCCGACATCAGGAAGATGTGCGTATCCAGAAGGAGCACCGTGTGG
ACTTCCCGCGTCCAAGAACCTGACCTGCGAGTGCAAGGACCTCATCTACCGCATGTGCAGCCCCGACGT
CAGCCAGCGGCTCCACATCGATGAGATCCTCAGCCACTCGTGGCTGCAGCCCCCAAGCCCAAGCCACG
TCTTCTGCCTCCTTCAAGAGGGAGGGGGAGGGCAAGTACCGCGCTGAGTGCAAACTGGACACCAAGACAG
ACTTGAGGCCCGACCCACCGCCCGACCACAAGCTTGAGGCCAAAACCCAGCACCGGCTGCTGGTGGTGCC
CGAGAACGAGAACAGGATGGAGGACAGGCTGGCCGAGACCTCCAGGGCCAAAGACCATCACATCTCCGGA
GCTGAGGTGGGAAAGCAAGCACC

ACCGTACGCGGCCGCTCGAG - GFP Tag - GTTTAA



[View online »](#)

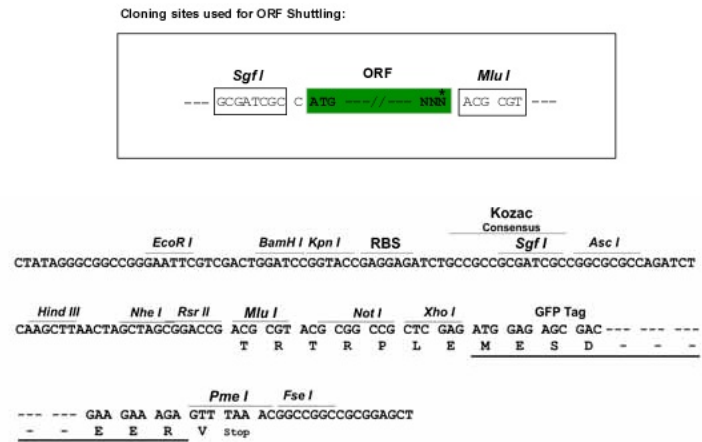
Protein Sequence: >RG207232 representing NM_053006
 Red=Cloning site Green=Tags(s)

MDDATVLRKKGYIVGINLGKGSYAKVKSAYSERLKFNVAVKIIDRKKTPDFVERFLPREMDILATVNHG
 SIIKTYEIFETSDGRIYIIMELGVQGDLLLEFIKCGALHEDVARKMFRQLSSAVKYCHDLDIVHRDLKCE
 NLLLDKDFNIKLSDFGFSKRCLRDSNGRIILSKTF CGSAAAYAPEVLQSIPIYQPKVYDIWSLGVILYIMV
 CGSMPYDDSDIRKMLRIQKEHRVDFPRSKNLTCECKDLIYRMLQPDVSRQLHIDEILSHSWLQPPKPKAT
 SSASFKREGEGKYRAECKLDTKTDLRPDHRPDHKLGAKTQHRLLVVPENENRMEDRLAETSRAKDHHSIG
 AEVGKAST

TRTRPLE - GFP Tag - V

Restriction Sites: SgfI-MluI

Cloning Scheme:



ACCN: NM_053006

ORF Size: 1074 bp

OTI Disclaimer: The molecular sequence of this clone aligns with the gene accession number as a point of reference only. However, individual transcript sequences of the same gene can differ through naturally occurring variations (e.g. polymorphisms), each with its own valid existence. This clone is substantially in agreement with the reference, but a complete review of all prevailing variants is recommended prior to use. [More info](#)

OTI Annotation: This clone was engineered to express the complete ORF with an expression tag. Expression varies depending on the nature of the gene.

Components: The ORF clone is ion-exchange column purified and shipped in a 2D barcoded Matrix tube containing 10ug of transfection-ready, dried plasmid DNA (reconstitute with 100 ul of water).

Reconstitution Method:

1. Centrifuge at 5,000xg for 5min.
2. Carefully open the tube and add 100ul of sterile water to dissolve the DNA.
3. Close the tube and incubate for 10 minutes at room temperature.
4. Briefly vortex the tube and then do a quick spin (less than 5000xg) to concentrate the liquid at the bottom.
5. Store the suspended plasmid at -20°C. The DNA is stable for at least one year from date of shipping when stored at -20°C.

RefSeq: [NM_053006.3](#), [NP_443732.2](#)

RefSeq Size: 1363 bp

RefSeq ORF: 1077 bp

Locus ID: 23617

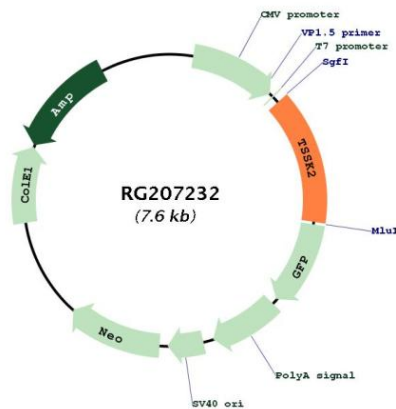
UniProt ID: [Q96PF2](#)

Cytogenetics: 22q11.21

Protein Families: Druggable Genome, Protein Kinase

Gene Summary: TSSK2 belongs to a family of serine/threonine kinases highly expressed in testis (Hao et al., 2004 [PubMed 15044604]).[supplied by OMIM, Mar 2008]

Product images:



Circular map for RG207232