

Product datasheet for **RG207202**

DSCR1L1 (RCAN2) (NM_005822) Human Tagged ORF Clone

Product data:

Product Type:	Expression Plasmids
Product Name:	DSCR1L1 (RCAN2) (NM_005822) Human Tagged ORF Clone
Tag:	TurboGFP
Symbol:	DSCR1L1
Synonyms:	CSP2; DSCR1L1; MCIP2; RCN2; ZAKI-4; ZAKI4
Mammalian Cell Selection:	Neomycin
Vector:	pCMV6-AC-GFP (PS100010)
E. coli Selection:	Ampicillin (100 ug/mL)
ORF Nucleotide Sequence:	>RG207202 representing NM_005822 Red=Cloning site Blue=ORF Green=Tags(s)

TTTTGTAATACGACTCACTATAGGGCGGCCGGAATTCGTCGACTGGATCCGGTACCGAGGAGATCTGCC
GCC**CGATCGCC**

ATGCCAGCCCCTAGCATGGACTGTGATGTTTCCACTCTGGTTGCCTGTGTGGTGGATGTCGAGGTCTTTA
CCAATCAGGAGGTTAAGGAAAAATTTGAGGGACTGTTTCGGACTTATGATGACTGTGTGACGTTCCAGCT
ATTTAAGAGTTTCAGACGTGTCGTATAAACTTCAGCAATCCTAAATCTGCAGCCCAGCTAGGATAGAG
CTTCATGAAACCAATTCAGAGGGAAAAAATTAAGCTCTACTTTGCACAGGTTCCAGACTCCAGAGACAG
ATGGAGACAACTGCACTTGGCTCCACCCAGCCTGCCAAACAGTTTCTCATCTCGCCCCCTTCTCCCC
ACCTGTTGGCTGGCAGCCATCAACGATGCCACGCCAGTCTCAACTATGACCTCCTCTATGCTGTGGCC
AAACTAGGACCAGGAGAGAAGTATGAGCTCCATGCAGGGACTGAGTCCACCCCAAGTGTCTGTCGTCACG
TGTGCGACAGTGACATAGAGGAAGAAGAGGACCCAAAGACTTCCCAAAGCCAAAATCATCCAAACTCG
GCGTCTGGCCTGCCACCCTCCGTGTCCAAGTGGCTGCCTGCTCCTTCTCGATAATAGCCGTCTCCTCT
TTATCATGCTTTTTCCCTGTTGTTTGTCAAAAAGAATTGCCTT

ACGCGTACGCGGCCGCTCGAG - GFP Tag - GTTTAA



[View online »](#)

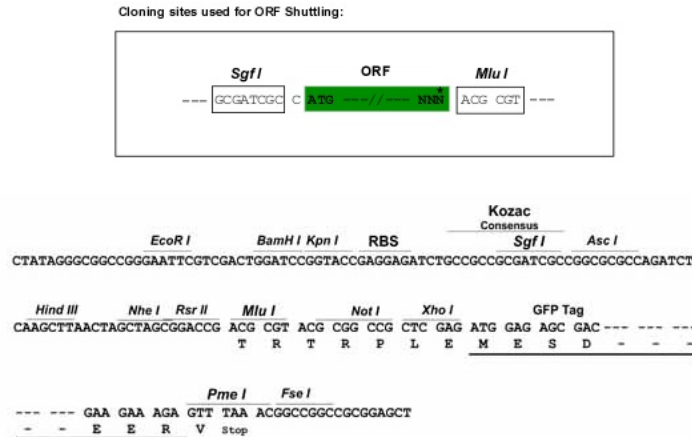
Protein Sequence: >RG207202 representing NM_005822
 Red=Cloning site Green=Tags(s)

MPAPSMDCDVSTLVACVVDVEVFTNQEVEKFEGLFRTYDDCVTFQLFKSFRRVRINFSNPKSAARARIE
 LHETQFRGKLLKLYFAQVQTPETDGDHLAPPQPAKQFLISPPSSPPVGVQWQIPINDATPVLNYDLLYAVA
 KLGPGEKYELHAGTESTPSVVVHVCDSDIEEEEEDPKTSPKPKIIQTRRPLPPSVSNWAACSF SIIAVSS
 LSCFFPLLFVKKNCL

TRTRPLE - GFP Tag - V

Restriction Sites: SgfI-MluI

Cloning Scheme:



ACCN: NM_005822

ORF Size: 675 bp

OTI Disclaimer: The molecular sequence of this clone aligns with the gene accession number as a point of reference only. However, individual transcript sequences of the same gene can differ through naturally occurring variations (e.g. polymorphisms), each with its own valid existence. This clone is substantially in agreement with the reference, but a complete review of all prevailing variants is recommended prior to use. [More info](#)

OTI Annotation: This clone was engineered to express the complete ORF with an expression tag. Expression varies depending on the nature of the gene.

Components: The ORF clone is ion-exchange column purified and shipped in a 2D barcoded Matrix tube containing 10ug of transfection-ready, dried plasmid DNA (reconstitute with 100 ul of water).

Reconstitution Method:

1. Centrifuge at 5,000xg for 5min.
2. Carefully open the tube and add 100ul of sterile water to dissolve the DNA.
3. Close the tube and incubate for 10 minutes at room temperature.
4. Briefly vortex the tube and then do a quick spin (less than 5000xg) to concentrate the liquid at the bottom.
5. Store the suspended plasmid at -20°C. The DNA is stable for at least one year from date of shipping when stored at -20°C.

Note: Plasmids are not sterile. For experiments where strict sterility is required, filtration with 0.22um filter is required.

RefSeq: [NM_005822.2](#), [NP_005813.2](#)

RefSeq Size: 3318 bp

RefSeq ORF: 594 bp

Locus ID: 10231

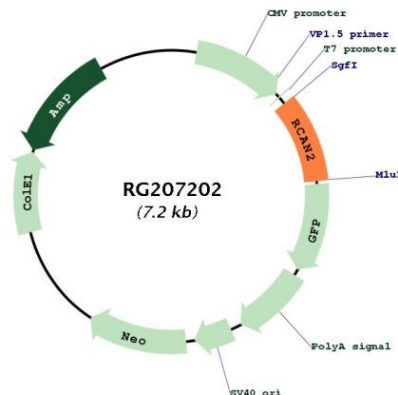
UniProt ID: [Q14206](#)

Cytogenetics: 6p12.3

Domains: Calcipressin

Gene Summary: This gene encodes a member of the regulator of calcineurin (RCAN) protein family. These proteins play a role in many physiological processes by binding to the catalytic domain of calcineurin A, inhibiting calcineurin-mediated nuclear translocation of the transcription factor NFATC1. Expression of this gene in skin fibroblasts is upregulated by thyroid hormone, and the encoded protein may also play a role in endothelial cell function and angiogenesis. Alternatively spliced transcript variants encoding multiple isoforms have been observed for this gene. [provided by RefSeq, Oct 2011]

Product images:



Circular map for RG207202