

Product datasheet for **RG207201**

NMUR1 (NM_006056) Human Tagged ORF Clone

Product data:

Product Type:	Expression Plasmids
Product Name:	NMUR1 (NM_006056) Human Tagged ORF Clone
Tag:	TurboGFP
Symbol:	NMUR1
Synonyms:	(FM-3); FM-3; FM3; GPC-R; GPR66; NMU1R
Mammalian Cell Selection:	Neomycin
Vector:	pCMV6-AC-GFP (PS100010)
E. coli Selection:	Ampicillin (100 ug/mL)
ORF Nucleotide Sequence:	>RG207201 representing NM_006056 Red=Cloning site Blue=ORF Green=Tags(s)

TTTTGTAATACGACTCACTATAGGGCGGCCGGAATTCGTCGACTGGATCCGGTACCGAGGAGATCTGCC
GCC**CGATCGCC**

ATGACTCCTCTGCCTCAATTGCTCTGTCTCCCTGGAGACCTGTACCCAGGGGGTGCAAGGAACCCCA
TGGCTTGCATGGCAGTGCAGCCAGGGGGCACTTTGACCTGAGGACTTGAACCTGACTGACGAGGCACT
GAGACTCAAGTACCTGGGGCCCCAGCAGACAGAGCTGTTTCATGCCCATCTGTGCCACATACTGCTGATC
TTCGTGGTGGGCGCTGTGGCAATGGGCTGACCTGTCTGGTCATCCTGCGCCACAAGGCCATGCGCACGC
CTACCAACTACTACCTCTTCAGCCTGGCCGTGTCGGACCTGCTGGTGTCTGGTGGGCTGCCCTGGA
GCTCTATGAGATGTGGCACAACCTACCCCTTCTGCTGGGCGTTGGTGGCTGCTATTTCCGCACGCTACTG
TTTGAGATGGTCTGCCTGGCCTCAGTGCTCAACGTCACTGCCCTGAGCGTGGAACGCTATGTGGCCGTGG
TGCACCCACTCCAGGCCAGGTCCATGGTGACGCGGGCCCATGTGCGCCGAGTGCTTGGGGCCGTCTGGGG
TCTTGCCATGCTCTGCTCCCTGCCAACACCAGCCTGCACGGCATCCAGCAGCTGCACGTGCCCTGCCGG
GGCCAGTGCCAGACTCAGCTGTTTGCATGCTGGTCCGCCACGGGCCCTCTACAACATGGTAGTGACAGA
CCACCGCGCTGCTCTTCTGCTGCCATGGCCATCATGAGCGTGCTACCTGCTCATTGGGCTGCG
ACTGCGGGGGAGAGGCTGCTGCTCATGCAGGAGGCCAAGGGCAGGGGCTCTGCAGCAGCCAGGTCCAGA
TACACCTGCAGGCTCCAGCAGCAGATCGGGCCGGAGACAAGTGACCAAGATGCTGTTTGTCTGGTCTCG
TGGTGTGGCATCTGCTGGGCCCCGTTCCACGCCGACCGGTATGTGGAGCGTGTGTCACAGTGGAC
AGATGGCCTGCACCTGGCCTTCCAGCACGTGCACGTCACTCCGGCATCTTCTTCTACCTGGGCTCGGCG
GCCAACCCCGTGTCTATAGCCTCATGTCCAGCCGCTTCCGAGAGACCTTCCAGGAGGCCCTGTGCTCTG
GGGCTGCTGCCATCGCCTCAGACCCCGCCACAGCTCCCACAGCCTCAGCAGGATGACCACAGGCAGCAC
CCTGTGTGATGTGGGCTCCCTGGGCGAGTGGGTCCACCCCTGGTGGGAACGATGGCCAGAGGCGCAG
CAAGAGACCGATCCATCC

ACGCGTACGCGGCCGCTCGAG - GFP Tag - GTTTAA



[View online »](#)

Protein Sequence: >RG207201 representing NM_006056
Red=Cloning site Green=Tags(s)

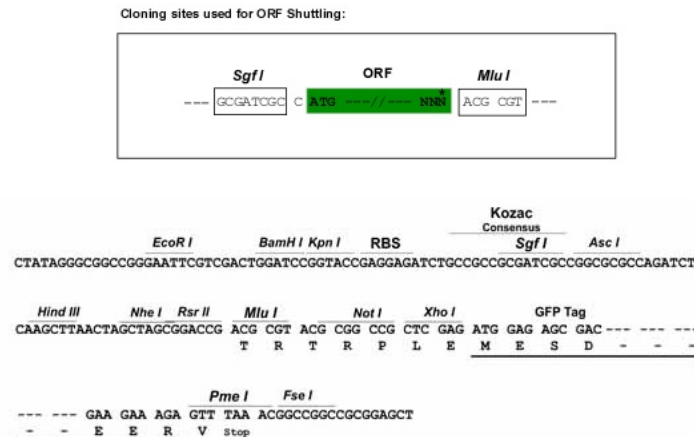
MTPLCLNCSVLPGLYPGGARNPMACNGSAARGHFDPEDLNLTDEALRLKYLGPQQTELFMPICATYLLI
 FVVGAVGNGLTCLVILRHKAMRTPNTYYLFLAVSDLLVLLVGLPLELYEMWHNYPFLLVGGCYFRTLL
 FEMVCLASVLNVTALSVERYVAVVHPLQARSMVTRAHVRRVLAGVWGLAMLCSLPNTSLHGIQQLHVPCR
 GPVPDSAVCMLVRPRALYNMVVQTTALLFFCLPMAIMSVLYLLIGLRLRRERLLLMQEAKGRGSAARSR
 YTCRLQQHDRGRRQVTKMLFVLVVVFGICWAPFHADRVMSVSVSQWTDGLHLAFQHVHVI SGIFFYLGSA
 ANPVLVLSLMSRFRETFQEALCLGACCHRLRPRHSSHLSRMTTGSTLCDVGSLSGWSVHPLAGNDGPEAQ
 QETDPS

TRTRPLE - GFP Tag - V

Restriction Sites:

SgfI-MluI

Cloning Scheme:



ACCN: NM_006056

ORF Size: 1278 bp

OTI Disclaimer: The molecular sequence of this clone aligns with the gene accession number as a point of reference only. However, individual transcript sequences of the same gene can differ through naturally occurring variations (e.g. polymorphisms), each with its own valid existence. This clone is substantially in agreement with the reference, but a complete review of all prevailing variants is recommended prior to use. [More info](#)

OTI Annotation: This clone was engineered to express the complete ORF with an expression tag. Expression varies depending on the nature of the gene.

Components: The ORF clone is ion-exchange column purified and shipped in a 2D barcoded Matrix tube containing 10ug of transfection-ready, dried plasmid DNA (reconstitute with 100 ul of water).

Reconstitution Method:

1. Centrifuge at 5,000xg for 5min.
2. Carefully open the tube and add 100ul of sterile water to dissolve the DNA.
3. Close the tube and incubate for 10 minutes at room temperature.
4. Briefly vortex the tube and then do a quick spin (less than 5000xg) to concentrate the liquid at the bottom.
5. Store the suspended plasmid at -20°C. The DNA is stable for at least one year from date of shipping when stored at -20°C.

RefSeq: [NM_006056.3](#)

RefSeq Size: 3354 bp

RefSeq ORF: 1281 bp

Locus ID: 10316

UniProt ID: [Q9HB89](#)

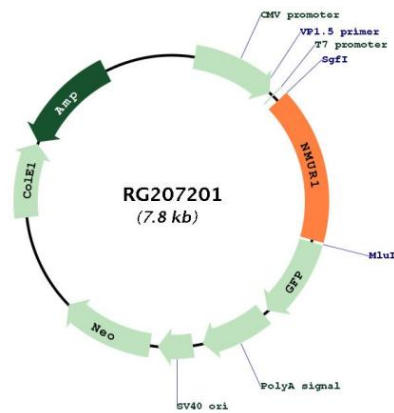
Cytogenetics: 2q37.1

Protein Families: Druggable Genome, GPCR, Transmembrane

Protein Pathways: Neuroactive ligand-receptor interaction

Gene Summary: Receptor for the neuromedin-U and neuromedin-S neuropeptides.[UniProtKB/Swiss-Prot Function]

Product images:



Circular map for RG207201