

Product datasheet for **RG207200**

HEF1 (NEDD9) (NM_006403) Human Tagged ORF Clone

Product data:

Product Type:	Expression Plasmids
Product Name:	HEF1 (NEDD9) (NM_006403) Human Tagged ORF Clone
Tag:	TurboGFP
Symbol:	HEF1
Synonyms:	CAS-L; CAS2; CASL; CASS2; HEF1
Mammalian Cell Selection:	Neomycin
Vector:	pCMV6-AC-GFP (PS100010)
E. coli Selection:	Ampicillin (100 ug/mL)



[View online »](#)

ORF Nucleotide Sequence:

>RG207200 representing NM_006403
 Red=Cloning site Blue=ORF Green=Tags(s)

TTTTGTAATACGACTCACTATAGGGCGGCCGGGAATTCGTCGACTGGATCCGGTACCGAGGAGATCTGCC
 GCC**CGGATCGCC**

ATGAAGTATAAGAATCTTATGGCAAGGGCCTTATATGACAATGTCCAGAGTGTGCCGAGGAACCTGGCCT
 TTCGCAAGGGAGACATCCTGACCGTCATAGAGCAGAACACAGGGGACTGGAAGGATGGTGGCTGTGCTC
 GTTACACGGTCGCAAGGCATTGTCCAGGCAACCGGGTGAAGCTTCTGATTGGTCCCATGCAGGAGACT
 GCCTCCAGTACGAGCAGCCTGCCTCTGGACTGATGCAGCAGACCTTTGGCCAACAGAAGCTCTATCAAG
 TGCCAAACCCACAGGCTGCTCCCGAGACACCATCTACCAAGTGCCACCTTCTACCAAAATCAGGGAAAT
 TTACCAAGTCCCCACTGGCCACGGCACCAAGAACAAGAGGTATATCAGGTGCCACCATCAGTGCAGAGA
 AGCATTGGGGGAACCAAGTGGGCCCCACGTGGGTAAAAAGGTGATAACCCCGTGAGGACAGGCCATGGCT
 ACGTATACGAGTACCCATCCAGATACCAAAAGGACGTCTATGATATCCCTCCTTCTCATACCACTCAAGG
 GGTATACGACATCCCTCCCTCATCAGCAAAAGGCCCTGTGTTTTTCAGTTCAGTGGGAGAGATAAAACCT
 CAAGGGGTGTATGACATCCCGCCTACAAAAGGGGTATATGCCATTCGGCCCTCTGCTTGGCCGGGATGAAG
 CAGGGCTTAGGAAAAAGACTATGACTTCCCCCTCCCATGAGACAAGCTGGAAGGCCGGACCTCAGACC
 GGAGGGGGTTTATGACATTCTCCAACCTGCACCAAGCCAGCAGGGGAAGGACCTTCATGTAAAATACAAC
 TGTGACATTCCAGGAGCTGCAGAACCGGTGGCTCGAAGGCACCAGAGCCTGTCCCGAATCACCCACCCC
 CGCAACTCGGACAGTCAAGTGGGCTCTCAGAACGACGCATATGATGTCCCGGAGGCGTTCAGTTTCTTGA
 GCCACCAGCAGAAACCAAGTGAAGAAACAAACCCCAAGGAAAGGGATGGTGTATGATGTCCCTCTGCAT
 AACCCGCCAGATGCTAAAGGCTCTCGGGACTTGGTGGATGGGATCAACCGATTGCTTTTCTCCAGTACAG
 GCAGACCCGGAGTAACATGTCCACGTCTTCCACCTCCTCAAGGAGTCCCTCACTGTCCAGCTCCCAGC
 TCAGGACAAAAGGCTCTTCTGGATCCAGACACAGCTATTGAGAGACTTCAGCGGCTCCAGCAGGCCCTT
 GAGATGGGTGTCTCCAGCCTAATGGCACTGGTCACTACCGACTGGCGGTGTACGGATATATGAAAAGAC
 ACATCAATGAAATACGCACAGCAGTGGACAAGGTGGAGCTGTTCTGAAGGAGTACCTCCACTTTGTCAA
 GGGAGCTGTTGCAATGCTGCCTGCCTCCCGAACTCATCTCCACAACAAGATGAAGCGGGAGCTGCAA
 CGAGTTGAAGACTCCCACCAGATCCTGAGTCAAACAGCCATGACTTAAATGAGTGCAGCTGGTCCCTGA
 ATATCTTGCCATCAACAAGCCCCAGAACAAGTGTGACGATCTGGACCGTTTGTGATGGTGGCAAAGAC
 GGTGCCCGATGACGCCAAGCAGCTCACCAACCATCAACACCAACGCAGAGGCCCTCTCAGACCCGGC
 CCTGGCAGCTTGCATCTGAAGAATGGGCGGAGAGCATCATGAACTCAACGGAGTACCCACACGGTGGCT
 CCCAGGGACAGCTGCTGCATCCTGGTGACCACAAGGCCCAAGGCCACAACAAGGCACTGCCCCAGGCCCT
 GAGCAAGGAGCAGGCCCTGACTGTAGCAGCAGTGTGTTCTGAGAGGAGCTGGATGGATGACTACGAT
 TACGTCCACCTACAGGTAAGGAGGAGTTTGAAGGCAACAGAAAAGAGCTATTGGAAAAAGAGAATATCA
 TGAAACAGAAACAAGATGCAGCTGGAACATCATCAGCTGAGCCAGTTCCAGCTGTTGGAACAAGAGATTAC
 AAAGCCCGTGGAGAATGACATCTCGAAGTGAAGCCCTCTCAGAGCCTACCCACCACAACAGTGGCGTG
 AGTGCTCAGGATCGGCAGTTGCTGTGCTTCTACTATGACCAATGTGAGACCCATTTCAATTCCTTCTCA
 ACGCCATTGACGCACTCTCAGTTGTGTGCTCAGCTCAGCCAGCCCCGCGAATCTTCGTGGCACACAGCAA
 GTTTGTCACTCAGTGCACACAACTGGTGTTCATTGGAGACAGCTGACACGGCAGGTGACTGCCCAAG
 GACATTGCAACAAAGTCACTGAACTCCAGCAACCAGCTCTGCGAGCAGCTCAAGACCATAGTCATGGCAA
 CCAAGATGGCCGCCCTCATTACCCAGCACCAGGCCCTGCAGGAAATGGTGCACCAAGTGCAGACCT
 TTCTAGAAATGCCAGCTGTTCAAGCGCTCTTTGCTGGAGATGGCAACGTTT

ACGGTACGCGGCCGCTCGAG - GFP Tag - GTTTAA

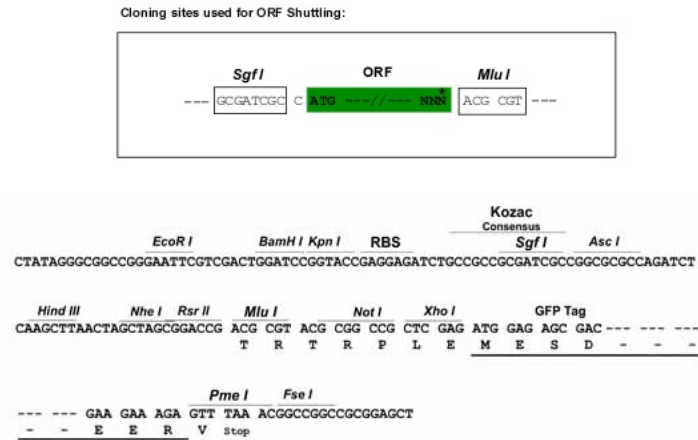
Protein Sequence: >RG207200 representing NM_006403
 Red=Cloning site Green=Tags(s)

```

MKYKNLMARALYDNVPECAEELAFRKGDILTVIEQNTGGLEGWWLCSLHGRQGI VPGNRV KLLIGPMQET
ASSHEQPASGLMQQTFGQQKLYQVPNPQAAPRDTIYQVPPSYQNQGIYQVPTGHGTQEVEVYQVPPSVQR
SIGGTS GPHVGGKVI TPVRTGHGYVVEYPSRYQKDVYDIPPSHTTQGVYDIPSSAKGPVFSVPVGEIKP
QGVYDIPPTKGVYAIPPSACRDEAGLREKDYDFPPPMRQAGRPDLRPEGVYDIPPTCTK PAKDLHVKYN
CDIPGAAEPVARRHQSLSPNHPPPQLGQSVGSQNDAYDVPRGVQFLEPPAETSEKANPQERDGVYDVPLH
NPPDAKGSRDLDVGINRLSFSSTGSTRSNMSTSSTSSKESSLASPAQDKRFLDPDTAIERLQRLQQAL
EMGVSSLMALVTTDWRCYGYMERHINEIRTAVDKVELFLKEYLHFVKGAVANAACLPELILHNKMKRELQ
RVEDSHQILSQTSHDLNECSWSLNILAINKPQNKCDLDRFVMVAKTVPDDAKQLTTTINTNAEALFRPG
PGSLHLKNGPESIMNSTEYPHGGSQGQLLHPGDHKAQAHNKALPPGLSKEQAPDCSSSDGSESWMDYD
YVHLQGKEEFERQQKELLEKENIMKQNKMLEHHQLSQFQLLEQEITKPVENDISKWKPSQSLPTTNSGV
SAQDRQLLCFYDQCETHFISLLNAIDALFSCVSSAQPPIRFVAHSKFVILSAHKLVFIGDTLTRQVTAQ
DIRNKVMNSSNQLCEQLKTIVMATKMAALHYPSTTALQEMVHQVTDLSRNAQLFKRSLLEMATF
  
```

TRTRPLE - GFP Tag - V

Restriction Sites: Sgfl-MluI

Cloning Scheme:


ACCN: NM_006403

ORF Size: 2502 bp

OTI Disclaimer: The molecular sequence of this clone aligns with the gene accession number as a point of reference only. However, individual transcript sequences of the same gene can differ through naturally occurring variations (e.g. polymorphisms), each with its own valid existence. This clone is substantially in agreement with the reference, but a complete review of all prevailing variants is recommended prior to use. [More info](#)

OTI Annotation: This clone was engineered to express the complete ORF with an expression tag. Expression varies depending on the nature of the gene.

Components: The ORF clone is ion-exchange column purified and shipped in a 2D barcoded Matrix tube containing 10ug of transfection-ready, dried plasmid DNA (reconstitute with 100 ul of water).

Reconstitution Method:

1. Centrifuge at 5,000xg for 5min.
2. Carefully open the tube and add 100ul of sterile water to dissolve the DNA.
3. Close the tube and incubate for 10 minutes at room temperature.
4. Briefly vortex the tube and then do a quick spin (less than 5000xg) to concentrate the liquid at the bottom.
5. Store the suspended plasmid at -20°C. The DNA is stable for at least one year from date of shipping when stored at -20°C.

Note: Plasmids are not sterile. For experiments where strict sterility is required, filtration with 0.22um filter is required.

RefSeq: [NM_006403.2](#), [NP_006394.1](#)

RefSeq Size: 4532 bp

RefSeq ORF: 2505 bp

Locus ID: 4739

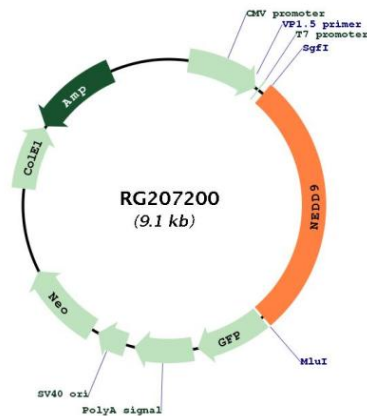
UniProt ID: [Q14511](#)

Cytogenetics: 6p24.2

Domains: SH3

Gene Summary: The protein encoded by this gene is a member of the CRK-associated substrates family. Members of this family are adhesion docking molecules that mediate protein-protein interactions for signal transduction pathways. This protein is a focal adhesion protein that acts as a scaffold to regulate signaling complexes important in cell attachment, migration and invasion as well as apoptosis and the cell cycle. This protein has also been reported to have a role in cancer metastasis. Alternative splicing results in multiple transcript variants. [provided by RefSeq, Aug 2012]

Product images:



Circular map for RG207200