

Product datasheet for **RG207178**

NEUROD6 (NM_022728) Human Tagged ORF Clone

Product data:

Product Type:	Expression Plasmids
Product Name:	NEUROD6 (NM_022728) Human Tagged ORF Clone
Tag:	TurboGFP
Symbol:	NEUROD6
Synonyms:	Atoh2; bHLHa2; Math-2; MATH2; Nex1; NEX1M
Mammalian Cell Selection:	Neomycin
Vector:	pCMV6-AC-GFP (PS100010)
E. coli Selection:	Ampicillin (100 ug/mL)
ORF Nucleotide Sequence:	>RG207178 representing NM_022728 Red=Cloning site Blue=ORF Green=Tags(s)

TTTTGTAATACGACTCACTATAGGGCGGCCGGAATTCGTCGACTGGATCCGGTACCGAGGAGATCTGCC
GCC**CGATCGCC**

ATGTTAACTACCGTTTGATGAGTCTGTTGTAATGCCAGAATCCAGATGTGCAGAAAGTTTTCTAGAG
AATGCGAGGACCAGAAGCAAATTAAGAAGCCAGAAAGCTTTTCCAACAGATTGTCCTTCGAGGAAAGAG
CATCAAAGGGCCCTGGAGAAGAAACCGAGAAAGAAGAAGAGGAGGAAGACAGGGAAGAGGAAGATGAA
AATGGGTTGCCTAGAAGGAGGGTCTTAGGAAAAAAGACAACAAGCTGCGATTGAAAGGGTCAAGT
TCAGGAGACAGGAAGCGAACGCGCGGAGAGGAACAGGATGCACGGCCTCAACGACGCTCTGGACAATT
AAGAAAAGTGGTCCCCTGTTATTCTAAAACCCAGAACTGTCAAATAGAGACTTTACGACTGGCCAAA
AACTACATCTGGGCACTTCTGAAATCTGAGAATCGGCAAGAGACCAGATCTGCTCACATTCGTCCAAA
ACTTATGCAAAGGTCTTCCAGCCAACACAACTTGGTGGCAGGCTGCTTGCAGCTCAACGCCAGGAG
TTTCATGATGGGTGAGGTGGGGAGGCTGCACACCACACAAGGTCACTACTCTACCTTACCCACCC
TACCACAGCCCTGAGCTCACCCTCCCCAGGGCATGGGACTCTTGATAATCCAAGTCCATGAAACCT
ACAATTATTGCAGTGCATGAATCCTTCTATGAAAGTACTTCCCTGAGTGTGCCAGCCCTCAGTTTGA
AGGTCCCTTAAGTCCCTCCCAATTAACATAATGGGATATTTCCCTGAAGCAAGAAGAAACCTTGGAC
TATGGTAAAAATTACAATTACGGCATGCATTACTGTGCAGTGCCACCCAGGGGTCCCCTTGGCAGGGTG
CCATGTTCAAGTTGCCACCGACAGCCACTTCCCTTACGACTTACATCTGCGCAGCCAATCTCTACAAT
GCAAGATGAATTAATGCAGTTTTTCATAAT

ACGCGTACGCGGCCGCTCGAG - GFP Tag - GTTTAA



[View online »](#)

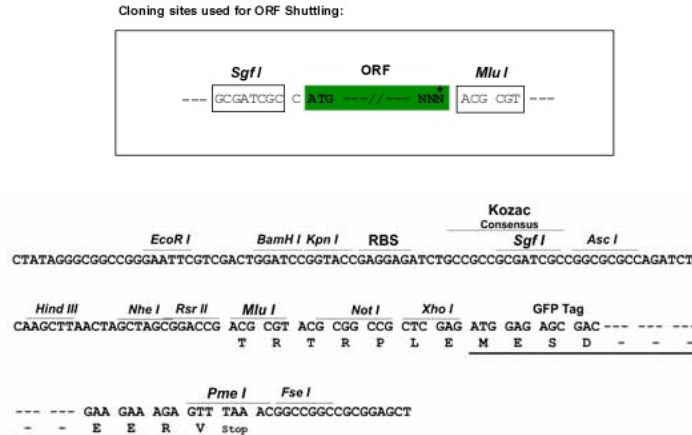
Protein Sequence: >RG207178 representing NM_022728
Red=Cloning site Green=Tags(s)

MLTLPFDESVMVPESQMCRKFSRECEDQKQIKKPESFSKQIVLRGKSIKRAPGEETEKEEEEEEDREEEDE
 NGLPRRRLRKKKTTKLRRLERVKFRRQEANARERNRMHGLNDALDNLKVVPCYSKTQKLSKIETLRLAK
 NYIWALSEILRIGKRPDLLTFVQNLCKGLSQPTNLVAGCLQLNARSFMMGQGGEAAHHTRSPYSTFYPP
 YHSPELTPPGHGTLDNSKSMKPYNYCSAYESFYESTSPECASPFEGPLSPPPINYNGIFSLKQEETLD
 YGKNYNYGMHYCAVPPRGPLGQGAMFRLPTDSHFYDHLHRSQSLTMQDELNAVFFHN

TRTRPLE - GFP Tag - V

Restriction Sites: SgfI-MluI

Cloning Scheme:



ACCN: NM_022728

ORF Size: 1011 bp

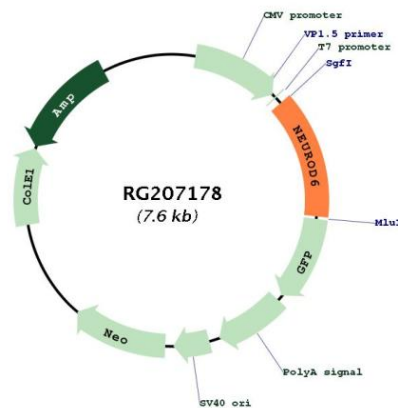
OTI Disclaimer: The molecular sequence of this clone aligns with the gene accession number as a point of reference only. However, individual transcript sequences of the same gene can differ through naturally occurring variations (e.g. polymorphisms), each with its own valid existence. This clone is substantially in agreement with the reference, but a complete review of all prevailing variants is recommended prior to use. [More info](#)

OTI Annotation: This clone was engineered to express the complete ORF with an expression tag. Expression varies depending on the nature of the gene.

Components: The ORF clone is ion-exchange column purified and shipped in a 2D barcoded Matrix tube containing 10ug of transfection-ready, dried plasmid DNA (reconstitute with 100 ul of water).

Reconstitution Method:	<ol style="list-style-type: none">1. Centrifuge at 5,000xg for 5min.2. Carefully open the tube and add 100ul of sterile water to dissolve the DNA.3. Close the tube and incubate for 10 minutes at room temperature.4. Briefly vortex the tube and then do a quick spin (less than 5000xg) to concentrate the liquid at the bottom.5. Store the suspended plasmid at -20°C. The DNA is stable for at least one year from date of shipping when stored at -20°C.
RefSeq:	NM_022728.2 , NP_073565.2
RefSeq Size:	2175 bp
RefSeq ORF:	1014 bp
Locus ID:	63974
UniProt ID:	Q96NK8
Cytogenetics:	7p14.3
Domains:	HLH
Protein Families:	Druggable Genome, Transcription Factors
Gene Summary:	This gene is a member of the NEUROD family of basic helix-loop-helix transcription factors. The encoded protein may be involved in the development and differentiation of the nervous system. [provided by RefSeq, Nov 2012]

Product images:



Circular map for RG207178