

## Product datasheet for **RG207174**

### ULBP1 (NM\_025218) Human Tagged ORF Clone

#### Product data:

Product Type:	Expression Plasmids
Product Name:	ULBP1 (NM_025218) Human Tagged ORF Clone
Tag:	TurboGFP
Symbol:	ULBP1
Synonyms:	N2DL-1; NKG2DL1; RAET1I
Mammalian Cell Selection:	Neomycin
Vector:	pCMV6-AC-GFP (PS100010)
E. coli Selection:	Ampicillin (100 ug/mL)
ORF Nucleotide Sequence:	>RG207174 representing NM_025218 Red=Cloning site Blue=ORF Green=Tags(s)

TTTTGTAATACGACTCACTATAGGGCGGCCGGAATTCGTCGACTGGATCCGGTACCGAGGAGATCTGCC  
GCC**CGATCGCC**

ATGGCAGCGGCCCGCCAGCCCCGGTTCCTTCTGTGCCTCCCGCTTCTGCACCTGCTGTCTGGCTGGTCCC  
GGGCAGGATGGGTCGACACACTGTCTTTGCTATGACTTCATCATCACTCCTAAGTCCAGACCTGAACC  
ACAGTGGTGTGAAGTTCAAGGCTGGTGGATGAAAGGCTTTTCTTCACTATGACTGTGTTAACCACAAG  
GCCAAAGCCTTTGCTTCTCTGGGAAGAAAGTCAATGTCACAAAACTGGGAAGAACAACTGAAACAC  
TAAGAGACGTGGTGGATTCCTTAAAGGCAACTGCTTGACATCAAGTGGAGAATTTAATACCCATTGA  
GCCCTCACCTGCAGGCCAGGATGTCTTGTGAGCATGAAGCCATGGACACGGCAGAGGATCTTGGCAG  
TTCTCTTCAATGGACAGAAGTTCCTCCTCTTTGACTCAAACAACAGAAAGTGGACAGCACTTCATCCTG  
GAGCCAAGAAGATGACAGAGAAGTGGGAGAAGAACAGGGATGTGACCATGTTCTTCCAGAAGATTTCACT  
GGGGGATTGTAAGATGTGGCTTGAAGAATTTTGTGACTGGGAACAAATGCTGGATCCAACAAAACCA  
CCCTCTCTGGCCCAGGCACAACCAACCAAGGCCATGGCCACCACCCTCAGTCCCTGGAGCCTTCTCA  
TCATCTTCTCTGCTTATTCTAGCTGGCAGA

**ACGCGT**ACGCGGCCGCTCGAG - GFP Tag - GTTTAA



[View online »](#)

**Protein Sequence:** >RG207174 representing NM\_025218  
 Red=Cloning site Green=Tags(s)

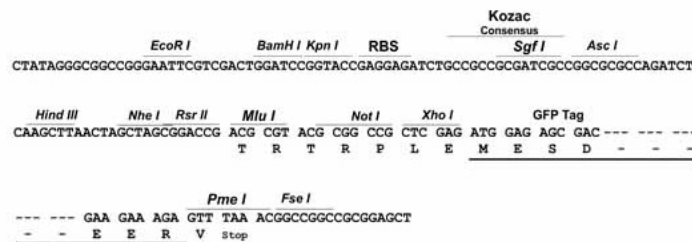
MAAAASPALLCLPLHLLSGWSRAGWVDTHCLCYDFIITPKSRPEPQWCEVQGLVDERPFLHYDCVNHK  
 AKAFASLGKKVNVTKTWEEQETELRDVVDLKGQLLDIQVENLPIEPLTLQARMSCEHEAHGHGRGSWQ  
 FLFNGQKFLFLFDSNNRKTALHPGAKKMTTEKWEKNRDVTMFFQKISLGDCKMWLEEFMYWEQMLDPTKP  
 PSLAPGTTQPKAMATTLSPWLLIIFLCFILAGR

TRTRPLE - GFP Tag - V

**Restriction Sites:** SgfI-MluI

**Cloning Scheme:**

Cloning sites used for ORF Shutting:



**ACCN:** NM\_025218

**ORF Size:** 732 bp

**OTI Disclaimer:** The molecular sequence of this clone aligns with the gene accession number as a point of reference only. However, individual transcript sequences of the same gene can differ through naturally occurring variations (e.g. polymorphisms), each with its own valid existence. This clone is substantially in agreement with the reference, but a complete review of all prevailing variants is recommended prior to use. [More info](#)

**OTI Annotation:** This clone was engineered to express the complete ORF with an expression tag. Expression varies depending on the nature of the gene.

**Components:** The ORF clone is ion-exchange column purified and shipped in a 2D barcoded Matrix tube containing 10ug of transfection-ready, dried plasmid DNA (reconstitute with 100 ul of water).

**Reconstitution Method:**

1. Centrifuge at 5,000xg for 5min.
2. Carefully open the tube and add 100ul of sterile water to dissolve the DNA.
3. Close the tube and incubate for 10 minutes at room temperature.
4. Briefly vortex the tube and then do a quick spin (less than 5000xg) to concentrate the liquid at the bottom.
5. Store the suspended plasmid at -20°C. The DNA is stable for at least one year from date of shipping when stored at -20°C.

**RefSeq:** [NM\\_025218.4](#)

**RefSeq Size:** 3160 bp

**RefSeq ORF:** 735 bp

**Locus ID:** 80329

**UniProt ID:** [Q9BZM6](#)

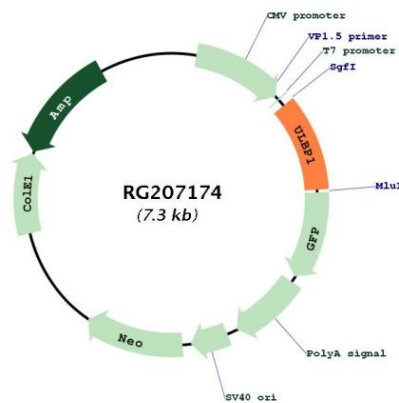
**Cytogenetics:** 6q25.1

**Protein Families:** Druggable Genome, Transmembrane

**Protein Pathways:** Natural killer cell mediated cytotoxicity

**Gene Summary:** The protein encoded by this gene is a ligand of natural killer group 2, member D (NKG2D), an immune system-activating receptor on NK cells and T-cells. Binding of the encoded ligand to NKG2D leads to activation of several signal transduction pathways, including those of JAK2, STAT5, ERK and PI3K kinase/Akt. Also, in cytomegalovirus-infected cells, this ligand binds the UL16 glycoprotein and is prevented from activating the immune system. Three transcript variants encoding different isoforms have been found for this gene. [provided by RefSeq, Nov 2015]

**Product images:**



Circular map for RG207174