

Product datasheet for **RG207158**

GPR114 (ADGRG5) (NM_153837) Human Tagged ORF Clone

Product data:

| | |
|---------------------------|--|
| Product Type: | Expression Plasmids |
| Product Name: | GPR114 (ADGRG5) (NM_153837) Human Tagged ORF Clone |
| Tag: | TurboGFP |
| Symbol: | GPR114 |
| Synonyms: | GPR114; PGR27 |
| Mammalian Cell Selection: | Neomycin |
| Vector: | pCMV6-AC-GFP (PS100010) |
| E. coli Selection: | Ampicillin (100 ug/mL) |



[View online »](#)

ORF Nucleotide Sequence:

>RG207158 representing NM_153837
 Red=Cloning site Blue=ORF Green=Tags(s)

TTTTGTAATACGACTCACTATAGGGCGGCCGGAATTCGTCGACTGGATCCGGTACCGAGGAGATCTGCC
 GCC**CGGATCGCC**

ATGGATCACTGTGGTGCCTTTTCTGTGCCTGTGCCTTCTGACTTTGCAGAATGCAACAACAGAGACAT
 GGGAGAAGACTCCTGAGCTACATGGAGAATATGCAGGTGTCCAGGGCCGAGCTCAGTTTTTCTCTCG
 TCAACTCCACCAGCTGGAGCAGATGCTACTGAACACCAGCTTCCCAGGCTACAACCTGACCTTGACAGACA
 CCCACCATCCAGTCTCTGGCCTTCAAGCTGAGCTGTGACTTCTCTGGCCTCTCGTGACCAGTGCCACTC
 TGAAGCGGGTGCCCCAGGCAGGAGGTGAGCATGCCGGGGTGCAGCAGCCATGCAGTTCCCCGCCGAGCT
 GACCCGGGACGCCTGCAAGACCCGCCAGGGAGCTGCGGCTCATCTGTATCTACTTCTCCAACACCCAC
 TTTTTCAAGGATGAAAACAACCTCATCTCTGCTGAATAACTACGCTCTGGGGGCCAGCTGAGTCATGGC
 ACGTGAACAACCTCAGGGATCCTGTGAACATCAGCTTCTGGCACAACAAAGCCTGGAAGGTACACCT
 GACCTGTGTCTTCTGGAAGGAGGAGCCAGGAAACAGCCCTGGGGGGCTGGAGCCCTGAGGGCTGTCGT
 ACAGAGCAGCCCTCCACTCTCAGGTGCTCTGCCGCTGCAACCACCTCACCTACTTTGCTGTTCTCATGC
 AACTCTCCCCAGCCCTGGTCCCTGCAGAGTTGCTGGCACCTTTACGTACATCTCCCTCGTGGGCTGCAG
 CATCTCCATCGTGGCCTCGTGATCACAGTCTGCTGCACTTCCATTTACGGAAGCAGAGTGACTCCTTA
 ACACGCATCCACATGAACCTGCATGCCTCCGTGCTGCTCTGAACATCGCCTTCTGCTGAGCCCCGCAT
 TCGCAATGTCTCCTGTGCCCGGGTGCAGATGCACGGCTCTGGCCGCTGCCTGCACTACGCGCTGCTCAG
 CTGCCTCACCTGGATGGCCATCGAGGGCTTCAACCTCTACCTCCTCCTCGGGCGTGTCTACAACATCTAC
 ATCCGAGATATGTGTTCAAGCTTGGTGTGCTAGGCTGGGGGGCCAGCCCTCCTGGTGTGCTTTCCC
 TCTCTGTCAAGAGCTCGGTATACGGACCCTGCACAATCCCCGTCTTCGACAGCTGGGAGAATGGCACAGG
 CTTCCAGAACATGTCCATATGCTGGGTGCGGAGCCCGTGGTGCACAGTGTCTGGTCTAGGGCTACGGC
 GGCTCACGTCCCTTTCAACCTGGTGGTGTGGCCTGGGCGCTGTGGACCTGCGCAGGCTGCGGGAGC
 GGGCGGATGCACCAAGTGTGAGGCTGCCATGACACTGTCACTGTGCTGGGCTCACCGTGTGCTGGG
 AACCACTGGGCTTGGCCTTTCTTTCTTTGGCGTCTTCTGCTGCCCCAGCTGTTCTCTTACCATC
 TAAACTCGCTCTACGGTTTCTTCTTTCTGTGTTCTGCTCCAGCGGTGCCGCTCAGAAGCAGAGG
 CCAAGGCACAGATAGAGGCCCTCAGCTCTCCAAACAACACAG

ACGCGTACGCGGCCGCTCGAG – GFP Tag – GTTTAA

Protein Sequence:

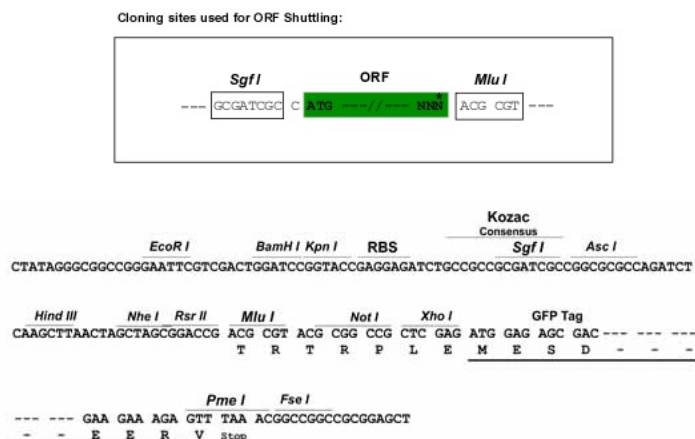
>RG207158 representing NM_153837
 Red=Cloning site Green=Tags(s)

MDHCGALFLCLLLTLQNATTETWEELLSYEMNQVSRGRSSVFSRQLHQLEQMLLNTSFPGYNLTLQT
 PTIQSLAFKLSCDFSGLSLTSATLKRVPQAGGQHARGQHMQFPAELTRDACKTRPRELRICIYFSNTH
 FFKDENSSLLNNYVLAGAQLSHGHVNNLRDPVNI SFWHNQSLEGYLTCVFWKEGARKQPWGGWSPGCR
 TEQPSHSQVLCRCNHLTYFAVLMQLSPALVPAELLAPLTYISLVGCSISIVASLITVLLHFHFRKQSDSL
 TRIHMNLHASVLLLNI AFLLSPAFAMSPVPGSACTALAAALHYALLSCLTWMAIEGFNLYLLGRVYNIY
 IRRYVFKLVGLGWGAPALLVLLSLSVKSSVYGPCIPVFDWENGTGFQNMICWVRSPVHVSVMGYG
 GLTSLFNLVVLAWALWTLRRLRERADAPSVRACHDVTVLGLTVLLGTTWALAFFSFGVFLLPQLFLFTI
 LNSLYGFFLWFCRQRSEAEAKAQIEAFSSSQTTQ

TRTRPLE – GFP Tag – V

Restriction Sites:

Sgfl-MluI

Cloning Scheme:


ACCN: NM_153837

ORF Size: 1584 bp

OTI Disclaimer: The molecular sequence of this clone aligns with the gene accession number as a point of reference only. However, individual transcript sequences of the same gene can differ through naturally occurring variations (e.g. polymorphisms), each with its own valid existence. This clone is substantially in agreement with the reference, but a complete review of all prevailing variants is recommended prior to use. [More info](#)

OTI Annotation: This clone was engineered to express the complete ORF with an expression tag. Expression varies depending on the nature of the gene.

Components: The ORF clone is ion-exchange column purified and shipped in a 2D barcoded Matrix tube containing 10ug of transfection-ready, dried plasmid DNA (reconstitute with 100 ul of water).

Reconstitution Method:

1. Centrifuge at 5,000xg for 5min.
2. Carefully open the tube and add 100ul of sterile water to dissolve the DNA.
3. Close the tube and incubate for 10 minutes at room temperature.
4. Briefly vortex the tube and then do a quick spin (less than 5000xg) to concentrate the liquid at the bottom.
5. Store the suspended plasmid at -20°C. The DNA is stable for at least one year from date of shipping when stored at -20°C.

RefSeq: [NM_153837.4](#)

RefSeq Size: 3848 bp

RefSeq ORF: 1587 bp

Locus ID: 221188

UniProt ID: [Q8IZF4](#)

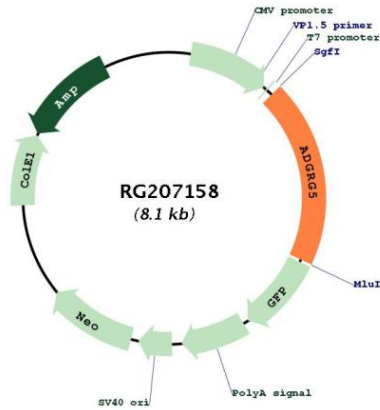
Cytogenetics: 16q21

Domains: GPS, 7tm_2

Protein Families: Druggable Genome, GPCR, Transmembrane

Gene Summary: This gene encodes a member of the adhesion family of G-protein coupled receptors. Members of this family are characterized by long N-termini and multiple functional domains. They may play a role in the immune system as well as in the central nervous system. Alternative splicing results in multiple transcript variants. [provided by RefSeq, Jan 2016]

Product images:



Circular map for RG207158