

Product datasheet for **RG207150**

iASPP (PPP1R13L) (NM_006663) Human Tagged ORF Clone

Product data:

Product Type:	Expression Plasmids
Product Name:	iASPP (PPP1R13L) (NM_006663) Human Tagged ORF Clone
Tag:	TurboGFP
Symbol:	PPP1R13L
Synonyms:	IASPP; NKIP1; RAI; RAI4
Mammalian Cell Selection:	Neomycin
Vector:	pCMV6-AC-GFP (PS100010)
E. coli Selection:	Ampicillin (100 ug/mL)



[View online »](#)

ORF Nucleotide Sequence:

>RG207150 representing NM_006663
 Red=Cloning site Blue=ORF Green=Tags(s)

TTTTGTAATACGACTCACTATAGGGCGGCCGGAATTCGTCGACTGGATCCGGTACCGAGGAGATCTGCC
 GCC**GCGATCGCC**

ATGGACAGCGAGGCATTCAGAGCGCGGGACTTTCTGGACATGAACTCCAGTCGCTGGCCATGAAAC
 ACATGGATCTGAAGCAGATGGAGCTGGACACGGCGGCCAAGGTGGATGAACTGACCAAGCAGCTGGA
 GTCGCTGTGGTCAGACTCTCCCGCCTCTGGCCCGCAGGCCGACCCCTTCTAGGCCCGCCGGTAC
 AGCTCCAGCTCGATCCCTGAGCCCTTCGGCAGCCGAGGGTCCCCCGAAGGCGGCCACCGACGGCGCAG
 ACACCCGTTTCGGACGATCAGAGAGTGCACCAACCTACACCCCTACAGCCCGTGTCCCCAAGGGACG
 GCCGTCGTCGCCGCGACCCCGCTCTACCTGCAGCCGACGCCTACGGCAGCCTGGACCGCGCAGCTCG
 CCCCAGCCCGCGCTTCGATGGCGCAGGAGCTCCCTCGGCCGTGCGCCCTCCCCGCGGCCCGGGCCAG
 GCCCGCTCCGCCAGCAGGGTCCCCCACGCTTTCGACTTCTGGGCCGCGCAGGCTCCCCCGCGGCAG
 CCCCTGGCGGAGGGGCCAGGCTTCTCCCGAGCGTGGGCCGTACCGCGCCCCCTGCCACAGCC
 TAGCAGCGCCAGCGTCCGCCTTCGGGAGCTCCCTGCTAGGCTCCGGCGGCAGCGCATTCGCCCCGCTC
 TGGCGCGCAAGACGACCTGACGCTGCGCCGGCGGCTCCGAAAGCCTGGAACGAGTCTGACCTGGACGT
 GGCGTACGAGAAGAAGCCTTCGCAGACAGCGAGCTATGAACGCCTGGACGTCTTCGCAAGGCCTGCCTCG
 CCGAGCCTGCAGCTGTTGCCTTGGAGGGAGAGCAGCCTGGATGGACTGGGGGACCGGCAAGGACAACC
 TCACTAGCGCCACCCTGCCGCGCAATTACAAGGTCTCTCTTGGCCAGCGACCGGCGTTTACAGCGCGG
 CAGCTACCGCGCTCGCTGGGCTCCGCGGGCGCTCGGGCACTTTCCTCGCAGCTGGCAGCCCGTCAAG
 CGCATCCCCATGCCCCCTCCAGCCCCAGCCCCGCGGGGCCCGCGCCAGCGTCCCATCCCCCTCCAGCA
 TGATCTTCAAGCTGCAGAAGCCTTCTGGGAGCACGGGGCCAGCCGCGCCATGCTCCCTGGTCCCCCT
 CTTACCCGAGCACCCCGCTAAGCTGCAGCCCAACCAACCAACAGCCCAACAATCACAAACCA
 CAGCCCCAGCTGCCCCACAGCCCCAGCCCAACCCAAACCCCTACCCAGCCCCCAGCATCCCCAAC
 AGACATGGCCCCCTGTGAACGAAGGACCCCAACCCCAACCCAGCTGGAGCCTGAGCCGGAGATAGA
 GGGGCTGTGACACCACTGCTGGAGGCTGGCGATGTGGATGAAGGCCCTGTAGCAAGGCCTCTCAGCCCC
 ACGAGGCTGCAGCCAGCACTGCCACCGAGGCACAGTCCGTGCCCGAGCTGGAGGAGGTGGCAGGGTGT
 TGGCGGAAATCCCCGGCCCTCAAACGCAGGGGCTCCATGGAGCAGGCCCTGCTGTGGCCCTGCCCC
 TACCCACAAGAAACAGTACCAGCAGATCATCAGCCGCTTTCATCGTCATGGGGGCCAGGGCCCGG
 GGGCCGAGCCAGAGCTGTCCCATCACTGAGGGATCTGAGGCCAGGGCAGGGCCCTGCTCCTGCC
 CACCAGCTCCCATTCACCCCGGCCCGTCCCAGAGCAGCCACCAGAGCAGCCGAGAGCATGGAGAT
 GCGCTCTGTGCTGCGGAAGGCGGGTCCCCGCGCAAGGCCCGCCGCGCGCCTCAACCTCTGGTGCTC
 CTCTGGACGCGCGCTGACCGGGAGCTGGAGGTGGTGCAGCAGGCGGTGAAGGAGATGAACGACCCGA
 GCCAGCCCAACGAGGAGGGCATCACTGCCTTGACAACGCCATCTGCGCGCCAACCTACTCTATCGTGGA
 TTTCTCATACCGCGGGTGCCAATGTCAACTCCCCGACAGCCACGGCTGGACACCCCTTGCAGTGCAG
 GCGTGTGCAACGACACAGTCACTGCATGGCGCTGGTGCAGCACGGCGTGAATCTTCGCCACCACGC
 TCAGCGACGGCGCCACCGCTTCGAGAAGTGCACCCCTTACCGCAGGGTTATGCTGACTGCGCCACCTA
 CCTGGCAGACGTCGAGCAGAGTATGGGGCTGATGAACAGCGGGGAGTGTACGCTCTCTGGGACTACAGC
 GCCGAGTTCGGGGACGAGCTGTCTTCCGCGAGGGCGAGTCGGTACCGTGTGCGGAGGGACGGCCGG
 AGGAGACCGACTGGTGGTGGGCCGCTGCACGGCCAGGAGGGTACGTGCCGCGGAACTACTTCGGGCT
 GTTCCCCAGGGTGAAGCCTCAAAGGAGTAAAGTC

AG**GCGACCG**ACGCGTACGCGGCCGCTCGAG - GFP Tag - GTTTAA

Protein Sequence: >RG207150 representing NM_006663
 Red=Cloning site Green=Tags(s)

```

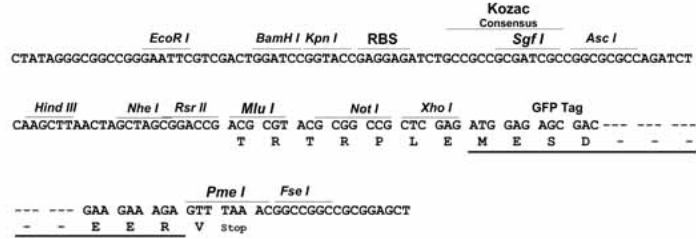
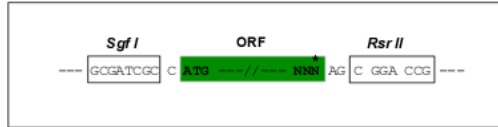
MDSEAFQSARDFLDMNFQSLAMKHMDLKQMELDTAAAKVDELTKQLESLWSDSPAPPGPQAGPPSRPPRY
SSSSIPEPFGSRGSPRKAATDGADTPFGRSESAPTLHPYSPLSPKGRPSSPRTPLYLQPDAYGSLDRATS
PRPRAFDGAGSSLGRAPSPRPGPLRQQGPPTPFDFLGRAGSPRGSLAEGPQAFFPERGSPRPPATA
YDAPASAFGSSLLGSGGSAFAPPLRAQDDLTLRRRPPKAWNESDLDVAYEKKPSQTASYERLDVFARPAS
PSLQLLPWRESSLDGLGGTGKDNLTSATLPRNYKVSPLASDRSDAGSYRRSLGSAGPSGTLPRSWQPVS
RIPMPSSPQPRGAPRQRPIPLSMIFKLQNAFWEHGASRAMLPGSPLFTRAPPKLQPQPQPQPQSQP
QPQLPPQPQTQPQTPTPAPQHPQQTWPPVNEGPPKPTELEPEPEIEGLLTPVLEAGDVDEGPVARPLSP
TRLQPALPPEAQSVPELEEVARVLAIEIPRPLKRRGSMEQAPAVALLPPTHKKYQQIISRLFHRHGGPGG
GPEPELSPITEGSEARAGPPAPAPPAPIPPPAPSQSSPPEQPQSMEMRSVLRKAGSPRKARRARLNPLVL
LLDAALTGELEVQAVKEMNDPSQPNEEGITALHNAICGANYSIVDFLITAGANVNSPDSHGWTPLHCA
ASCNDTVICMALVQHGAEIFATLSDGATAFEKCDPYREGYADCATYLADVEQSMGLMNSGAVYALWDYS
AEFGDELSFREGESVTVLRDDGPEETDWWAALHGQEGYVPRNYFGLFPRVKPQRSKV
  
```

SGPTRRRLE - GFP Tag - V

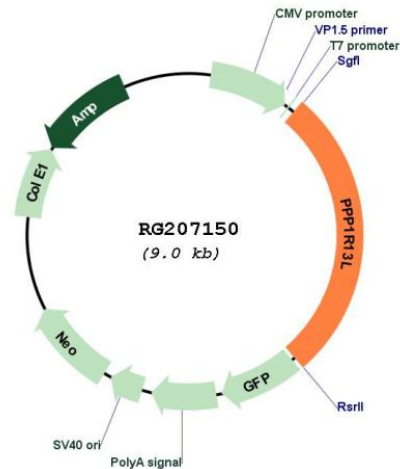
Restriction Sites: Sgfl-RsrII

Cloning Scheme:

Cloning sites used for ORF Shuttling:



Plasmid Map:



ACCN: NM_006663

ORF Size: 2484 bp

OTI Disclaimer: The molecular sequence of this clone aligns with the gene accession number as a point of reference only. However, individual transcript sequences of the same gene can differ through naturally occurring variations (e.g. polymorphisms), each with its own valid existence. This clone is substantially in agreement with the reference, but a complete review of all prevailing variants is recommended prior to use. [More info](#)

OTI Annotation: This clone was engineered to express the complete ORF with an expression tag. Expression varies depending on the nature of the gene.

Components: The ORF clone is ion-exchange column purified and shipped in a 2D barcoded Matrix tube containing 10ug of transfection-ready, dried plasmid DNA (reconstitute with 100 ul of water).

Reconstitution Method:

1. Centrifuge at 5,000xg for 5min.
2. Carefully open the tube and add 100ul of sterile water to dissolve the DNA.
3. Close the tube and incubate for 10 minutes at room temperature.
4. Briefly vortex the tube and then do a quick spin (less than 5000xg) to concentrate the liquid at the bottom.
5. Store the suspended plasmid at -20°C. The DNA is stable for at least one year from date of shipping when stored at -20°C.

RefSeq: [NM_006663.4](#)

RefSeq Size: 3117 bp

RefSeq ORF: 2487 bp

Locus ID: 10848

UniProt ID: [Q8WUF5](#)

Cytogenetics: 19q13.32

Domains: SH3, ANK

Protein Families: Transcription Factors

Gene Summary: IASPP is one of the most evolutionarily conserved inhibitors of p53 (TP53; MIM 191170), whereas ASPP1 (MIM 606455) and ASPP2 (MIM 602143) are activators of p53.[supplied by OMIM, Mar 2008]