

Product datasheet for **RG207145**

NSP3 (SH2D3C) (NM_170600) Human Tagged ORF Clone

Product data:

Product Type:	Expression Plasmids
Product Name:	NSP3 (SH2D3C) (NM_170600) Human Tagged ORF Clone
Tag:	TurboGFP
Symbol:	SH2D3C
Synonyms:	CHAT; NSP3; PRO34088; SHEP1
Mammalian Cell Selection:	Neomycin
Vector:	pCMV6-AC-GFP (PS100010)
E. coli Selection:	Ampicillin (100 ug/mL)



[View online »](#)

ORF Nucleotide Sequence:

>RG207145 representing NM_170600
 Red=Cloning site Blue=ORF Green=Tags(s)

TTTTGTAATACGACTCACTATAGGGCGGCCGGAATTCGTCGACTGGATCCGGTACCGAGGAGATCTGCC
 GCC**GCGATCGCC**

ATGACAGAGGGGACCAAGAAGACCAGCAAAAAGTTCAAGTTCTTCAAGTTCAAGGGCTTTGGGAGTCTCT
 CCAACCTCCCTCGGTCCTTCACTCTGAGACGATCCTCAGCTTCCATCAGTAGGCAGTCCCATTTGGAGCC
 TGACACCTTTGAAGCCACGCAGGATGACATGGTGACGGTGCCCAAGAGTCCCCAGCCTATGCCCGCTCC
 AGTGACATGTACAGCCACATGGGCACCATGCCTCGCCCCAGCATCAAGAAAGCACAGAACTCACAGGCTG
 CCCGGCAGGCCAGGAGGCGGTCCCAAGCCAACTTGGTACCCGGAGGTGTACCCGACCCCCAGGCTT
 GGAGGCAGCCAAAGAGGTGATGGTGAAGGCCACTGGCCCTCTAGAGGACACCCAGCAATGGAACCCAAC
 CCTTCAGCAGTGGAGGTAGACCCCATCAGAAAGCCTGAGGTCCCCACAGGAGACGTAGAAGAGGAGAGAC
 TCCCAGGGACGTGCACTCAGAAAGGGTGTCTGGAGAGCCAGAGGCTGGCAGCGACTATGTGAAGTTCTC
 CAAGGAGAAGTACATCCTGGACTCATCGCCAGAGAACTCCACAAGGAATTGGAGGAGGAGCTCAAACCTC
 AGCAGCACGGATCTCCGACGCCATGCCTGGTACCATGGCCGCATCCCCGAGAGGTCTCGGAGACCTTGG
 TACAACGCAACGGCGACTTCTCATCCGGGACTCACTACCAGCCTGGGCGACTATGTGCTCACGTGCCG
 CTGGCGCAACCAGGCCTTGCCTTCAAGATCAACAAGGTGGTGGTGAAGGCAGGCAGAGCTACACACAC
 ATCCAGTACCTGTTTGGCAGGAGAGCTTTGACCACGTGCCCGCCCTCGTGCCTATCATGTGGGACGCC
 GCAAGGCTGTGTAGAGCAGAGTGGTGCCATCATCTACTGCCCGTGAACCCGACCTTCCCACTGCGCTA
 CCTCGAGGCCAGCTATGGCCTGGGACAGGGGAGTAGCAAGCCTGCTAGCCCCGTAGCCCCCTCAGGCCCC
 AAGGGCAGCCACATGAAGCGGCGCAGCGTCACCATGACCGATGGGCTCACTGCTGACAAGGTCAACCCGCA
 GGATGGCTGCCACCAGTACGTGCTGCCCGCCCTCGGACTCCATCCGAGCTGTGCCCTCAGCATCAGC
 GGACAGATCCCAGACCTGCCTACCCATGTCCGCCATCTCCGAGAGCCCTAGCTCCCTGCCTACAGC
 ACTGTAACCCGTGTCCATGCCGCCCTGCAGCCCTTCTGCCACAGCATTGCCTGCCTCCCTGTGCCG
 GCCGTTCCAGTGAGCCCCAGCTGTGTCCCGGAAGTGCCCCAAAGACCCATGGGGAGTCAGACAAGGGCCC
 CCACACCAGCCCCCTCCACACCTTGGCAAGGCCCTCCCCGTACCATCACTCAGCAGCTACAGTGACCCG
 GACTCTGGCCACTACTGCCAGCTCCAGCCTCCCGTGCCTGGCAGCCGAGAGTGGGCGAGCTGAGACCT
 CCAGCCAGCAGGCCAGGAGCTATGGGGAGAGGCTAAAGGAACTGTGAGAAAATGGGGCCCTGAAGGGGA
 CTGGGGCAAGACCTTACAGTCCCCATCGTGGAAGTCACTTCTTCTTCAACCCGGCCACCTTCCAGTCA
 TACTGATCCCCAGGGATAACCGGCCACTGGAGGTGGGCTTCTGCGCAAGGTCAAGGAGCTGCTGGCAG
 AAGTGGATGCCCGGACGCTGGCCCGCATGTACCAAGGTGGACTGCCTGGTTGCTAGGATACTGGGCGT
 TACCAAGGAGATGCAGACCCATAATGGGAGTCCGCTGGGGCATGGAAGTGCCTACCCCTCCCCATGGCCG
 CAGCTACGCCTAGACCTGCTGAAAGGTTCCACACCATGTCCATCATGCTGGCCGTGGACATCCTGGGCT
 GCACCGGCTCTGCGGAGGAGCGGCAGCGCTGCTGCACAAGACCATTCAGCTGGCGGCCGAGCTGCGGGG
 GACTATGGGCAACATGTTAGCTTCCGGCGGTGATGGTGCCCTGGACATGGCTCAGATTTCTCGGCTG
 GAGCAGACATGGGTGACCCTGCGGCAGCGACACACAGAGGGTCCATCCTGTACGAGAAGAAGCTCAAGC
 CTTTTCTCAAGAGCCTCAACGAGGGCAAGAAGGCCCGCCGCTGAGCAACACCACGTTTCTCATGTGCT
 GCCCTCATCACCTGCTGGAGTGTGACTCGGCCCCACCAGAGGGCCCTGAGCCCTGGGCGACACGGAG
 CACGGCGTGGAGGTGGTGTGGCTCACCTGGAGGCCCGCCGACAGTGGCACACCACGGAGGCGCTGTACC
 ACACCAATGCTGAAGTCAAGCTGCAAGGGTTCAGGCCCGGCCGAGCTCCTGGAGGTGTTGAGCAGGGA
 GTTCCAGATGCGCCTTCTCTGGGCAGTCAGGGTGCCAGCAGCAGCCAGGCCCGGCGCTATGAGAAGTTC
 GACAAGGTCTCACTGCCTGTCCACAAGCTGGAACCTGCTGTCCGCTCCAGCGAGCTG

ACGCGTACGCGGCCGCTCGAG - GFP Tag - GTTTAA

Protein Sequence: >RG207145 representing NM_170600
Red=Cloning site Green=Tags(s)

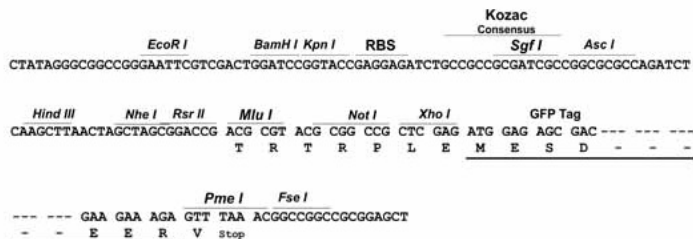
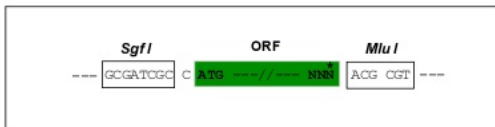
MTEGTKKTSKKFKFFKFKGFGSLSNLPRSFTLRRSSASISRQSHLEPDTFEATQDDMVTVPKSPPAYARS
SDMYSHMGTMPRPSIKKAQNSQAARQAQEAGPKPNLVGGVDPDPGLEAAKEVMVKATGPLEDTPAMEPN
PSAVEVDPIRKPEVPTGDVEEERPPRDVHSERAAGEPEAGSDYVKFSKEKYILDSSPEKLHKELEELKL
SSTDLRSHAWYHGRIPREVSETLVQRNGDFLIRDSTLSLDYVLTWRNRNQLHFKINKVVVKAGESYTH
IQYLFEQESFDHVPALVRYHVGSRKAVSEQSGAIYCPVNRTFPLRYLEASYGLGQGSSKPASPVSPSGP
KGSMMKRRSVTMTDGLTADKVTRSDGCPTSTSLPRPRDSIRSCALSMDQIPDLHSPMSPISESPSSPAYS
TVTRVHAAPAAPSATALPASPVARRSSEPQLCPGSAPKTHGESDKGPHTSPSHTLGKASPSLSYSDP
DSGHYQQLQPPVRSREWAATETSSQARSYGERLKELSENGAPEGDWGTFTVPIVEVTSFNPATFQS
LLIPRDNRPLEVGLLRKVKELLA EVDARTLARHVTKVDCLVARILGVTKEMQTLMGVRWGMELLTLPHGR
QLRLDLLERFHTMSIMLAVDILGCTGSAEERAALLHKTIQLAELRGTMGNMFSFAAVMGALDMAQISRL
EQTWVTLRQRHTEGAILYEKCLKPFLKSLNEGKEGPPLSNTTFPHVLP LITLLECD SAPPEGPEPWGSTE
HGVEVVL AHLEAARTVAHHGGLYHTNAEVKLQGFQARPELLEVFSTEFQMRLWGSQGASSQARRYEFK
DKVLTALSHKLEPAVRSSSEL

TRTRPLE - GFP Tag - V

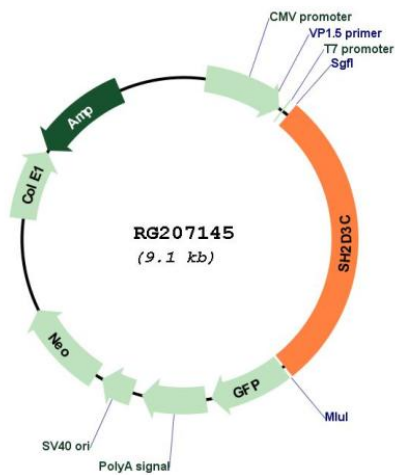
Restriction Sites: Sgfl-MluI

Cloning Scheme:

Cloning sites used for ORF Shutting:



Plasmid Map:



ACCN:	NM_170600
ORF Size:	2580 bp
OTI Disclaimer:	The molecular sequence of this clone aligns with the gene accession number as a point of reference only. However, individual transcript sequences of the same gene can differ through naturally occurring variations (e.g. polymorphisms), each with its own valid existence. This clone is substantially in agreement with the reference, but a complete review of all prevailing variants is recommended prior to use. More info
OTI Annotation:	This clone was engineered to express the complete ORF with an expression tag. Expression varies depending on the nature of the gene.
Components:	The ORF clone is ion-exchange column purified and shipped in a 2D barcoded Matrix tube containing 10ug of transfection-ready, dried plasmid DNA (reconstitute with 100 ul of water).
Reconstitution Method:	<ol style="list-style-type: none">1. Centrifuge at 5,000xg for 5min.2. Carefully open the tube and add 100ul of sterile water to dissolve the DNA.3. Close the tube and incubate for 10 minutes at room temperature.4. Briefly vortex the tube and then do a quick spin (less than 5000xg) to concentrate the liquid at the bottom.5. Store the suspended plasmid at -20°C. The DNA is stable for at least one year from date of shipping when stored at -20°C.
RefSeq:	NM_170600.1 , NP_733745.1
RefSeq Size:	3114 bp
RefSeq ORF:	2583 bp
Locus ID:	10044
UniProt ID:	Q8N5H7
Cytogenetics:	9q34.11
Protein Families:	Druggable Genome
Gene Summary:	This gene encodes an adaptor protein and member of a cytoplasmic protein family involved in cell migration. The encoded protein contains a putative Src homology 2 (SH2) domain and guanine nucleotide exchange factor-like domain which allows this signaling protein to form a complex with scaffolding protein Crk-associated substrate. Multiple transcript variants encoding different isoforms have been found for this gene. [provided by RefSeq, Nov 2011]