

Product datasheet for **RG207103**

TIMM44 (NM_006351) Human Tagged ORF Clone

Product data:

Product Type:	Expression Plasmids
Product Name:	TIMM44 (NM_006351) Human Tagged ORF Clone
Tag:	TurboGFP
Symbol:	TIMM44
Synonyms:	TIM44
Mammalian Cell Selection:	Neomycin
Vector:	pCMV6-AC-GFP (PS100010)
E. coli Selection:	Ampicillin (100 ug/mL)



[View online »](#)

ORF Nucleotide Sequence:

>RG207103 representing NM_006351
 Red=Cloning site Blue=ORF Green=Tags(s)

TTTTGTAATACGACTCACTATAGGGCGGCCGGAATTCGTCGACTGGATCCGGTACCGAGGAGATCTGCC
 GCC**CGGATCGCC**

ATGGCGGGCGGCCCTGCGGAGTGGCTGGTGCCGCTGTCCACGGAGATGCCTCGGCAGTGGAAATCCAAT
 TTCTTTCCAGCCACAACCTACCCATGGGTCGACCTATCAGATGCGCCGGCCGGGCGGAGAGCTGCCACT
 GTCAAATCATATTCTTCTGAAACAGAAAAGGCTTTCTGTCCGGCTTGCTAGATAATGTCAAACAAGAA
 TTAGCCAAAAACAAGAAATGAAAGAAAGTATAAAAAATTCCTGACGAGGCCAGAAGGCTAGAAGAAT
 CAGACGTGCTCCAGGAGGCCAGAAGGAAATACAAAACCATCGAGTCAGAAAACCGTGGGACGAGCGAGGT
 GCTACGGAAGAAGCTTGGGGAGCTGACGGGCACCGTGAAGGAGAGCCTTACGAAGTCAGTAAAAGTGAT
 CTGGCCGGAAAAATCAAGGAGGGCGTGGAGGAAGCAGCCAAGACGGCCAAGCAGTCGGCCGAGTCGGTAT
 CCAAAGGCGGGGAGAAGCTGGGCAGGACAGCGGCTTCCAGAGCCCTCTCCAGGGGTGGAGTCCGTGAA
 GAAGGAAATTGACGACAGCGTCTGGGACAGACGGGCCCTACCGAGGGCCCAGCGACTCCGGAAGAGA
 ACGGAGTTTGGCGGAGATAAGTTCAAGGAGGAGAAAGTGTGGAGCCAAACGAGGAGGCCCTGGGGGTGCG
 TGCTGCACAAGGACTCCAAGTGGTACCAGCAGTGGAAAGGACTTCAAGGAGAAACAAGTGGTGTAAACCG
 GTTCTTCGAGATGAAGATGAAGTATGACGAAAGCGACAACCGGTTTCCATCCGGGCATCCCGGGCCCTTACG
 GACAAGGTACCGACTTGTGGGGGCTGTTCTCCAAGACAGAGATGTCGGAGGTGCTCACGGAGATCC
 TCCGGGTGGACCCGGCCTTTGACAAGGACCGGTTTCTGAAACAGTGCAGAACGACATCATCCCCAATGT
 CCTGGAGGCCATGATTTCTGGAGAGCTTGACATTCTCAAAGACTGGTGTATGAAGCTACTTACAGCCAG
 CTGGCCACCCCATCCAGCAGGCCAAGGCACTGGGTCTCCAGTTCATTCTCGCATCCTAGACATTGACA
 ACGTCGACCTGGCCATGGCAAGATGATGGAGCAGGGGCGGTGCTGATCATCACCTTCCAGGCACAGCT
 GGTGATGGTGGTCAAGAACCCAAAGGCGAGGTGGTGGAGGGTGACCCGACAAGGTGCTGCGGATGCTG
 TACGTGTGGGCGCTCTGCCGAGACCAGGACGAGCTCAACCCCTACGCGGCTGGCGGCTCCTGGACATCT
 CGGCTCCAGCACCGAGCAGATTCTC

AG**CGGACCG**ACGCGTACGCGGCCGCTCGAG - GFP Tag - GTTTAA

Protein Sequence:

>RG207103 representing NM_006351
 Red=Cloning site Green=Tags(s)

MAAAALRSGWCRCPRRCLGSGIQFLSSHNLPHGSTYQMRRPGGELPLSKSYSSGNRKGFLSGLLDNVKQE
 LAKNKEMKESIKKFRDEARRLEESDVLQEARRKYKTIESETVRTSEVLRKKLGELTGTVKESLHEVSKSD
 LGRKIKEGVEEAAKTAKQSAESVSKGGEKLGRTAAFRLSQGVESVKKEIDDSVLGQTGPYRRPQRLRKR
 TEFAGDKFKEEKVFEPNEEALGVVLHKDSKWKYQWKDFKENVVFNRFEMKMKYDESDNAFIRASRAL
 DKVTDLLGGLFSKTEMSEVLTEILRVDPAFDKDRFLKQCENDIIPNVLEAMISGELDILKDWCYEATYSQ
 LAHPIQQAKALGLQFHSRILDIDNVDLAMGKMEQGPVLIITFQAQLVMVVRNPKGEVVEGDPDKVLRML
 YVWALCRDQDELNPYAAWRLLDISASSTEQIL

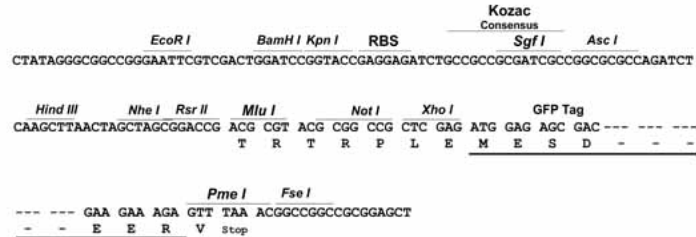
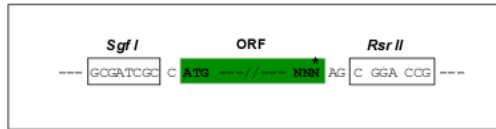
SGP**TRRRLE** - GFP Tag - V

Restriction Sites:

Sgfl-RsrII

Cloning Scheme:

Cloning sites used for ORF Shuttling:


ACCN: NM_006351

ORF Size: 1356 bp

OTI Disclaimer: The molecular sequence of this clone aligns with the gene accession number as a point of reference only. However, individual transcript sequences of the same gene can differ through naturally occurring variations (e.g. polymorphisms), each with its own valid existence. This clone is substantially in agreement with the reference, but a complete review of all prevailing variants is recommended prior to use. [More info](#)

OTI Annotation: This clone was engineered to express the complete ORF with an expression tag. Expression varies depending on the nature of the gene.

Components: The ORF clone is ion-exchange column purified and shipped in a 2D barcoded Matrix tube containing 10ug of transfection-ready, dried plasmid DNA (reconstitute with 100 ul of water).

- Reconstitution Method:**
1. Centrifuge at 5,000xg for 5min.
 2. Carefully open the tube and add 100ul of sterile water to dissolve the DNA.
 3. Close the tube and incubate for 10 minutes at room temperature.
 4. Briefly vortex the tube and then do a quick spin (less than 5000xg) to concentrate the liquid at the bottom.
 5. Store the suspended plasmid at -20°C. The DNA is stable for at least one year from date of shipping when stored at -20°C.

RefSeq: [NM_006351.4](#)
RefSeq Size: 1897 bp

RefSeq ORF: 1359 bp

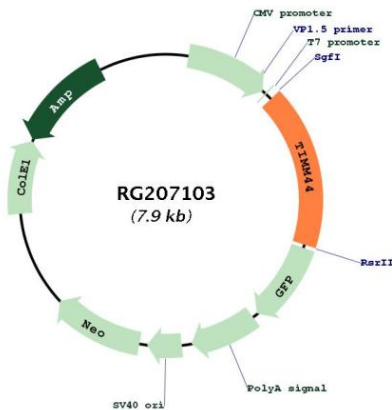
Locus ID: 10469

UniProt ID: [O43615](#)
Cytogenetics: 19p13.2

Domains: Tim44

Gene Summary: This gene encodes a peripheral membrane protein associated with the mitochondrial inner membrane translocase, which functions in the import of proteins across the mitochondrial inner membrane and into the mitochondrial matrix. The encoded protein mediates binding of mitochondrial heat shock protein 70 to the translocase of inner mitochondrial membrane 23 (TIM23) complex. Expression of this gene is upregulated in kidney in a mouse model of diabetes. A mutation in this gene is associated with familial oncocytic thyroid carcinoma. [provided by RefSeq, Jul 2016]

Product images:



Circular map for RG207103