

## Product datasheet for **RG207082**

### **NAT10 (NM\_024662) Human Tagged ORF Clone**

#### Product data:

Product Type:	Expression Plasmids
Product Name:	NAT10 (NM_024662) Human Tagged ORF Clone
Tag:	TurboGFP
Symbol:	NAT10
Synonyms:	ALP; Kre33; NET43
Mammalian Cell Selection:	Neomycin
Vector:	pCMV6-AC-GFP (PS100010)
E. coli Selection:	Ampicillin (100 ug/mL)
ORF Nucleotide Sequence:	>RG207082 representing NM_024662 Red=Cloning site Blue=ORF Green=Tags(s)

TTTTGTAATACGACTCACTATAGGGCGGCCGGAATTCGTCGACTGGATCCGGTACCGAGGAGATCTGCC  
GCC**CGATCGCC**

ATGCATCGGAAAAAGGTGGATAACCGAATCCGGATTCTCATTGAGAATGGAGTAGCTGAGCGCAAAGAT  
CTCTCTTTGTTGTAGTTGGGATCGAGGAAAAGATCAGGTGTAATACTTCATCACATGTTATCCAAAGC  
AACTGTGAAGGCTCGCCTTCAGTGCTGTGGTGTATAAGAAAGAGCTGGGGTTTAGCAGTCACCGGAAG  
AAAAGAATGCGACAGCTGCAGAAGAAAAAAGAATGGAACACTGAACATAAAGCAGGACGACCCCTTTG  
AACTCTTCATAGCAGCCACAAACATTGCTACTGCTACTACAACGAGACCCACAAGATCCTGGGCAATAC  
CTTCGGCATGTGTGTGCTGCAGGATTTGAAGCCTTAACCTCAAACCTTGCTGGCCAGGACTGTAGAAACA  
GTGGAAGGTGGTGGGCTAGTGGTCATCCTCTACGGACCATGAACTCACTCAAGCAATTGTACACAGTGA  
CTATGGATGTGCATTCCAGGTACAGAACTGAGGCCATCAGGATGTGGTGGGAAGATTTAATGAAAGGTT  
TATTCTGTCTCTGGCCTCTGTGAAGAAGTGTCTCGTCATTGATGACCAGCTCAACATCCTGCCATCTCC  
TCCCACGTTGCCACCATGGAGGCCCTGCCTCCCGAGACTCCGGATGAGAGTCTTGGTCTTCTGATCTGG  
AGCTGAGGGAGTTGAAGGAGAGCTTGCAGGACACCCAGCCTGTGGGTGTGTTGGTGGACTGCTGTAAGAC  
TCTAGACCAGGCCAAAGCTGTCTTGAATTTATCGAGGGCATCTCTGAAAAGACCCTGAGGAGTACTGTT  
GCACTCACAGCTGCTCGAGGACGGGAAAATCTGCAGCCCTGGGATTGGCGATTGCTGGGGCGGTGGCAT  
TTGGGTACTCCAATATCTTTGTTACCTCCCAAGCCCTGATAACCTCCATACTCTGTTTGAATTTGTATT  
TAAAGGATTTGATGCTCTGCAATATCAGGAACATCTGGATTATGAGATTATCCAGTCTCTAAATCCTGAA  
TTTAACAAAGCAGTGATCAGAGTGAATGTATTTGAGAACACAGGCAGACTATTCAGTATATACATCCTG  
CAGATGCTGTGAAGCTGGGCCAGGCTGAACTAGTTGTGATTGATGAAGCTGCCGCCATCCCCCTCCCCTT  
GGTGAAGAGCCTACTTGGCCCTACCTGTTTTTCATGGCATCCACCATCAATGGCTATGAGGGCACTGGC  
CGGTCACTGTCCCTCAAGCTAATTCAGCAGCTCCGTCAACAGAGCGCCAGAGCCAGGTCAGCACCCTG  
CTGAGAATAAGACCACGACGACAGCCAGATTGGCATCAGCGCGGACACTGCATGAGGTTTCCCTCCAGGA  
GTCAATCCGATACGCCCTGGGATGCAGTGGAGAAGTGGCTGAATGACTTGCTGTGCTGGATTGCCTC



[View online >](#)

AACATCACTCGGATAGTCTCAGGCTGCCCTTGCCCTGAAGCTTGTGAACTGACTATGTTAATAGAGATA  
 CCCTCTTTTGGCTACCACAAGGCCTCTGAAGTTTCTCCAACGGCTTATGGCCCTCTACGTGGCTTCTCA  
 CTAACAAGAACTCTCCCAATGATCTCCAGATGCTCTCCGATGCACCTGCTCACCATCTCTTCTGCCTTCTG  
 CCTCCTGTGCCCCCACCAGAATGCCCTTCCAGAAGTGTCTGCTGTTATCCAGGTGTGCCTTGAAGGGG  
 AGATTTCTCGCCAGTCCATCTTGAACAGTCTGTCTCGAGGCAAGAAGGCTTCAGGGGACCTGATCCATG  
 GACAGTGTGACAACAGTCCAAGATCCAGACTTTGGTGGTCTGTCTGGTGAAGGGTCTGTCGCATTGAT  
 GTTCAACCAGATTATCAAGGGATGGGCTATGGCAGCCGCTCTGCAGCTGCTGCAGATGTACTATGAAG  
 GCAGGTTTCTTGTCTGGAGGAAAAGGTCTTGAGACACCACAGGAAATTCACACCGTAAGCAGCGAGGC  
 TGTGAGCTTGTGGAAGAGGTATCACTCCCGGAAGGACCTGCCTCCTTACTCCTCAAATGAATGAG  
 AGGCTGCCGAACGCCTGGATTACCTGGGTGTTTCTATGGCTTGACCCCGAGGCTCCTCAAGTTCTGGA  
 AACGAGCTGGATTTGTTCTGTTATCTGAGACAGACCCGAATGACCTGACCGGAGAGCACTCGTGCAT  
 CATGCTGAAGACGCTCACTGATGAGGATGAGGCTGACCAGGGAGGCTGGCTTGCAGCCTTCTGAAAAGAT  
 TTCGACGGCGGTTCTAGCCTTGTCTCCTACCAGTTCAGTACCTTCTCCTTCCCTGGCTCTGAACA  
 TCATTGAAACAGGAACATGGGGAAGCCAGCCAGCCTGCCCTGAGCCGGGAGGAGCTGGAAGCACTCTT  
 CCTCCCCTATGACCTGAAGCGGCTGGAGATGTATTCACGGAATATGGTGGACTATCACCTCATCATGGAC  
 ATGATCCCGGCCATCTCTCGCATCTATTTCTGAACCAGCTGGGGGACCTGGCCCTGTCTGCGGCTCAGT  
 CGGCTCTTCTTGGGGATTGGCCTGCAGCATAAGTCTGTGGACCAGCTGGAAGGAGATTGAGCTGCC  
 CTCGGGCCAGTTGATGGGACTTTTCAACCGGATCATCCGCAAAGTTGTGAAGCTATTTAATGAAGTTCAG  
 GAAAAGGCCATTGAGGAGCAGATGGTGGCAGCGAAGGATGTGGTTCATGGAGCCACGATGAAGACCCCTCA  
 GTGACGACCTAGATGAAGCAGCAAAGGAATTTCAAGGAGAAACACAAGAAGGAAGTAGGGAAGCTGAAGAG  
 CATGGACCTCTCTGAATACATAATCCGTGGGACGATGAAGAGTGAAGTGAAGTTTGAACAAAGCTGGG  
 CCGAACGCCTCGATCATCAGCCTGAAAAGTGACAAGAAAAGGAAGTTAGAGGCCAAACAAGAACCCAAAC  
 AGAGCAAGAAGTTGAAGAACAGAGAGACAAAGAACAAAAAAGATATGAACTGAAGCGGAAGAAA

ACGCGTACGCGGCCGCTCGAG - GFP Tag - GTTTAA

**Protein Sequence:**

>RG207082 representing NM\_024662  
 Red=Cloning site Green=Tags(s)

MHRKKVDNRIRILIEINGVAERQSLFVVVGDGRGKDVVILHHMLSKATVKARPSVLWCYKKELGFSHRK  
 KRMRQLQKIKNGTLNLIKQDDPFELIAATNIRYCYNETHKILGNTFGMCVLQDFEALTPNLLARTVET  
 VEGGGLVVILLRTMNSLKQLYVTMDVHSRYRTEAHQDVVGRFNERFILSLASCKKCLVIDDQNLNLPIS  
 SHVATMEALPPQTPDES LGPSDLELRELKESLQDTPVGVLDCCCKLDQAKAVLKFIEGISEKTLRSTV  
 ALTAARGRKSAAALGLAIAGAVAFGYSNIFVTSPSPDNLHTLFEFVFKGFDALQYQEHLDYEEIIQSLNPE  
 FNKAVIRVNVFREHRQTIQYIHPADAVKLGQAEVVIDEAAAIPPLVKSLLGPYLVFMASTINGYEGTG  
 RSLSLKLIQQLRQSAQSQVSTTAENKTTTTARLASARTLHEVSLQESIRYAPGDAVEKWLNDLLCLDCL  
 NITRIVSGCPLPEACELYYVNRDTLFCYHKASEVFLQRLMALYVASHYKNPNDLQMLSDAPAHHLFCLL  
 PPVPPTQNALPEVLAVIQVCLEGEISRQSI LNLSRGKASGDLIPWTVSEQFDQPDFGGLSGGRVVRIA  
 VHPDYQGMGYGSRALQLLQMYEGRFPCLLEEKVLETPQEIHTVSSEAVSLLEEVIIPRKDLPPLLLKLINE  
 RPAERLDYLVGSYGLTPRLLKFWKRAGFVPVYLRQTPNDLTGEHSCIMLKTLDDEADQGGWLAAFWKD  
 FRRRFLALLSYQFSTFSPSLALNIIQNRNMGKPAQPALSREELEALFLPYDLKRLEMYSRNMVDYHLIMD  
 MIPAIRIYFLNQLGDLALSAQSALLLIGLQHKSVQLEKEIELPSGQLMGLFNRIIRKVVKLFNEVQ  
 EKAIEEQMVAAKDVMEPTMKTLSDDLDEAAKEFQEKHKKEVGLKSMDSLSEYIIRGDDEEWNEVLNKAQ  
 PNASIIISLKSDDKRRKLEAKQEPKQSKLKNRETKNKMDMLKRRK

TRTRPLE - GFP Tag - V

**Restriction Sites:**

Sgfl-Mlul

Cloning Scheme:



ACCN: NM\_024662

ORF Size: 3075 bp

OTI Disclaimer: The molecular sequence of this clone aligns with the gene accession number as a point of reference only. However, individual transcript sequences of the same gene can differ through naturally occurring variations (e.g. polymorphisms), each with its own valid existence. This clone is substantially in agreement with the reference, but a complete review of all prevailing variants is recommended prior to use. [More info](#)

OTI Annotation: This clone was engineered to express the complete ORF with an expression tag. Expression varies depending on the nature of the gene.

Components: The ORF clone is ion-exchange column purified and shipped in a 2D barcoded Matrix tube containing 10ug of transfection-ready, dried plasmid DNA (reconstitute with 100 ul of water).

Reconstitution Method:

1. Centrifuge at 5,000xg for 5min.
2. Carefully open the tube and add 100ul of sterile water to dissolve the DNA.
3. Close the tube and incubate for 10 minutes at room temperature.
4. Briefly vortex the tube and then do a quick spin (less than 5000xg) to concentrate the liquid at the bottom.
5. Store the suspended plasmid at -20°C. The DNA is stable for at least one year from date of shipping when stored at -20°C.

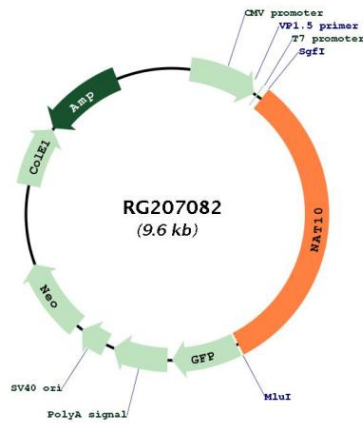
RefSeq: [NM\\_024662.2](#)

RefSeq Size: 4002 bp

RefSeq ORF: 3078 bp  
 Locus ID: 55226  
 UniProt ID: Q9H0A0  
 Cytogenetics: 11p13  
 Domains: DUF699

**Gene Summary:** The protein encoded by this gene is an RNA cytidine acetyltransferase involved in histone acetylation, tRNA acetylation, the biosynthesis of 18S rRNA, and the enhancement of nuclear architecture and chromatin organization. [provided by RefSeq, Oct 2016]

**Product images:**



Circular map for RG207082