

Product datasheet for **RG207077**

MAGED1 (NM_001005332) Human Tagged ORF Clone

Product data:

Product Type:	Expression Plasmids
Product Name:	MAGED1 (NM_001005332) Human Tagged ORF Clone
Tag:	TurboGFP
Symbol:	MAGED1
Synonyms:	DLXIN-1; NRAGE
Mammalian Cell Selection:	Neomycin
Vector:	pCMV6-AC-GFP (PS100010)
E. coli Selection:	Ampicillin (100 ug/mL)



[View online »](#)

ORF Nucleotide Sequence:

>RG207077 representing NM_001005332
 Red=Cloning site Blue=ORF Green=Tags(s)

TTTTGTAATACGACTCACTATAGGGCGGCCGGAATTCGTCGACTGGATCCGGTACCGAGGAGATCTGCC
 GCC**CGATCGCC**

ATGGCTCAGAAAAAGACTGTGGTGCAGGCTCCTCGGCTTCCAGGCTGAGGCCTCCGTAGAAGACAGCG
 CCTTGCTTATGCAGACCTTGATGGAGGCCATCCAGATCTCAGAGGCTCCACCTACTAACCAGGCCACCGC
 AGCTGCTAGTCCCAGAGTTCACAGCCCCAACTGCCAATGAGATGGCTGACATTCAGGTTTCAGCAGCT
 GCCGCTAGGCCTAAGTCAGCCTTTAAAGTCCAGAATGCCACCACAAAAGGCCAAATGGTGTCTATGATT
 TCTCTCAGGCTCATAATGCCAAGGATGTGCCAACACGCAGCCCAAGGCAGCCTTTAAGTCCAAAATGC
 TACCCCAAAGGGTCCAAATGCTGCCTATGATTTTTCCAGGCAGCAACCCTGGTGTAGTTAGCTGCTAAC
 AAGTCTGAGATGGCCTTCAAGGCCAGAATGCCACTACTAAAGTGGGCCAAATGCCACCTACAATTTCT
 CTCAGTCTCTCAATGCCAATGACCTGGCCAACAGCAGGCCAAGACCCCTTCAAGGCTTGAATGATAC
 CACTAAGGCCCAACAGCTGATACCCAGACCCAGAATGTAATCAGGCCAAAATGGCCACTTCCAGGCT
 GACATAGAGACCCGACCCAGGTATCTCTGAACCTGACGGTGAACCTGCACAGACATCAGCAGATGGTTCCC
 AGGCTCAGAATCTGGAGTCCCGGACAATAATTCGGGGCAAGAGGACCCGCAAGATTAATAACTTGAATGT
 TGAAGAGAACAGCAGTGGGGATCAGAGGCGGGCCCACTGGCTGCAGGGACCTGGAGGTCTGCACCAAGTT
 CCAGTGACCACTCAGAACCACCTGGCGCACCCCAATGTGCTCTGGCAGACGCCATTGGCTTGGCAGA
 ACCCCTCAGGCTGGCAAAACCAGACAGCCAGGCAGACCCACCAGCAGCTCAGAGCCCTCCAGCTAGGCA
 GACCCACCAGCTGGCAGAACCAGTCGCTTGGCAGAACCAGTGATTTGGCAAAACCAGTAATCTGG
 CAGAACCAGTGATCTGGCAAACCCATTGTCTGGCCCGCCCTGTTGTCTGGCCGAATCCACTGGCCT
 GGCAGAAATCCACTGGATGGCAGACTCCACTGGATGGCAGACCCACCCGGGCTGGCAGGGTCTCCAGA
 CTGGCAAGGTCTCTGACTGGCCGCTACCACCGACTGGCCACTGCCACCTGATTGGCCACTTCCCACT
 GACTGGCCACTACCACCTGACTGGATCCCGCTGATTGGCCAATTCACCTGACTGGCAGAACCTGCGCC
 CCTCGCTAACCTGCGCCCTTCTCCCAACTCGCGTGCCTCACAGAACCAGGTGCTGCACAGCCCGAGA
 TGTGGCCCTTCTCAGGAAAGAGCAAAATAGTTGGTCAAGTACTTGATGCTTAAGGACTACACAAAGGTG
 CCCATCAAGCGCTCAGAAATGCTGAGAGATATCATCCGTGAATACACTGATGTTTATCCAGAAATCATTG
 AACGTGCATGCTTTGCTCAGAGAAGAAATTTGGGATTCAACTGAAAGAAATTGACAAAGAAGAACCTT
 GTATATTCTCATCAGTACCCCGAGTCCCTGGCTGGCATACTGGGAACGACCAAAGACACACCCAAGCTC
 GGTCTCCTCTTGGTGATTCTGGGTGTCATCTTCATGAATGGCAACCGTGCCAGTGAGGCTGTCTCTGGG
 AGGCACTACGCAAGATGGGACTGCGTCCCTGGGGTGGAGATCCCTCCTTGGAGATCTAAGGAAACTTCT
 CACCTATGAGTTTGTAAGCAGAAATACCTGGACTACAGACGAGTGCCCAACAGCAACCCCGGAGTAT
 GAGTTCCTCTGGGGCCTCCGTTCTACCATGAGACTAGCAAGATGAAAGTGTGAGATTCATTGCAGAGG
 TTCAGAAAAGAGACCCTCGTGACTGGACTGCACAGTTCATGGAGGCTGCAGATGAGGCCTTGGATGCTCT
 GGATGTGCTGCAGCTGAGGCCGAAGCCCGGGCTGAAGCAAGAACCAGCATGGGAATTGGAGATGAGGCT
 GTGTCTGGGCCCTGGAGCTGGGATGACATTGAGTTTGGCTGCTGACCTGGGATGAGGAAGGAGATTTTG
 GAGATCCCTGGTCCAGAATTCATTTACCTTCTGGCCAGATACCACCAGAATGCCCGCTCCAGATTTCC
 TCAGACCTTTGCCGGTCCATTATTGGTCTGGTGGTACAGCCAGTGCCAACTTCGCTGCCAACTTTGGT
 GCCATTGGTTTTCTCTGGTTGAG

ACGCGTACGCGGCCGCTCGAG – GFP Tag – GTTTAA

Protein Sequence: >RG207077 representing NM_001005332
 Red=Cloning site Green=Tags(s)

```

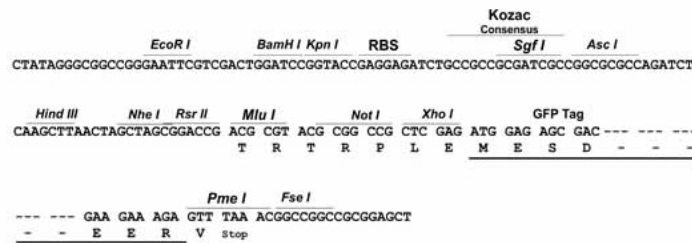
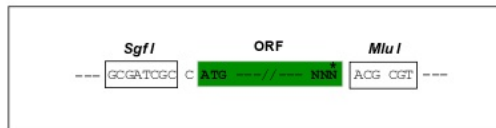
MAQKMDCGAGLLGFQAEASVEDSALLMQTLMEAIQISEAPPTNQATAAASPQSSQPPTANEMADIQVSAA
AARPKSAFKVQNATTKGPNGVYDFSQAHNAKDVNPNTQPKAAFKSQNPATPKGPNAAVDYFSQAATTGELAAN
KSEMAFKAQNATTKVGNATYNFSQLNANDLANSRKPFPKAWNDTTKAPTADTQTQNVNQAKMATSSQA
DIETDPGISEPDGATAQTSADGSQAQNLERSRTIIRGKRTRKINNLNVEENSSGDQRRAPLAAGTWRSAPV
PVTTQNPPGAPPNVLWQTPPLAWQNP SGWQNTARQTPPARQSPPARQTPPAWQNPVAVQNPVIWPNPVIW
QNPVIWPNPVIWPGPVVWPNPLAWQNP PGWQTPPGWQTPPGWQGPDPDWQPPDWPLPPDWPLPPDWPLPT
DWPLPPDWIPADWPIPPDWQNL RSPNLRSPNSRASQNP GAAQPRDVALLQERANKLVKYLMLKDYTKV
PIKRSEMLRDIIREYTDVYPEIIERACFVLEKKFGIQLKEIDKEEHLIYL I STPESLAGILGTTKDPKL
GLLLVILGVIFMNGNRASEAVLWEALRKMGLRPGVVRHPLLGDRLKLLTYEFVKQKYL D YRRVPNSNPPEY
EFLWGLRSYHETSKMKVLR FIAEVQKRDPDWTAQFMEAADEALDAL DAAAAEAEARAEARTRMGIGDEA
VSGPWSWDDIEFELLTWDEEGDFGDPWSRIPFTFWARYHQNARS RFPQTFAGPIIGPGGTASANFAANFG
AIGFFWVE
  
```

TRTRPLE - GFP Tag - V

Restriction Sites: SgfI-MluI

Cloning Scheme:

Cloning sites used for ORF Shuttling:



ACCN: NM_001005332

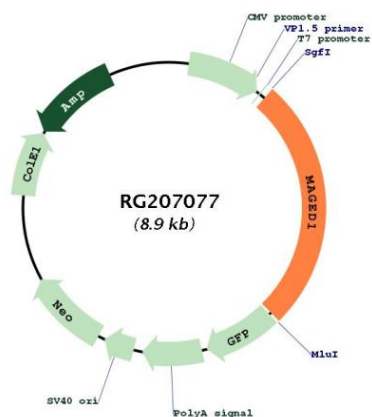
ORF Size: 2334 bp

OTI Disclaimer: The molecular sequence of this clone aligns with the gene accession number as a point of reference only. However, individual transcript sequences of the same gene can differ through naturally occurring variations (e.g. polymorphisms), each with its own valid existence. This clone is substantially in agreement with the reference, but a complete review of all prevailing variants is recommended prior to use. [More info](#)

OTI Annotation: This clone was engineered to express the complete ORF with an expression tag. Expression varies depending on the nature of the gene.

Components:	The ORF clone is ion-exchange column purified and shipped in a 2D barcoded Matrix tube containing 10ug of transfection-ready, dried plasmid DNA (reconstitute with 100 ul of water).
Reconstitution Method:	<ol style="list-style-type: none">1. Centrifuge at 5,000xg for 5min.2. Carefully open the tube and add 100ul of sterile water to dissolve the DNA.3. Close the tube and incubate for 10 minutes at room temperature.4. Briefly vortex the tube and then do a quick spin (less than 5000xg) to concentrate the liquid at the bottom.5. Store the suspended plasmid at -20°C. The DNA is stable for at least one year from date of shipping when stored at -20°C.
Note:	Plasmids are not sterile. For experiments where strict sterility is required, filtration with 0.22um filter is required.
RefSeq:	NM_001005332.2
RefSeq Size:	2665 bp
RefSeq ORF:	2337 bp
Locus ID:	9500
UniProt ID:	Q9Y5V3
Cytogenetics:	Xp11.22
Protein Families:	Druggable Genome
Protein Pathways:	Neurotrophin signaling pathway
Gene Summary:	This gene is a member of the melanoma antigen gene (MAGE) family. Most of the genes of this family encode tumor specific antigens that are not expressed in normal adult tissues except testis. Although the protein encoded by this gene shares strong homology with members of the MAGE family, it is expressed in almost all normal adult tissues. This gene has been demonstrated to be involved in the p75 neurotrophin receptor mediated programmed cell death pathway. Three transcript variants encoding two different isoforms have been found for this gene. [provided by RefSeq, Jul 2008]

Product images:



Circular map for RG207077